

Alana

Developer: Bullen Holdings Pty. Ltd. & Cabana JV Pty. Ltd. - Co. Registration No.: 194004199K & 200602283C - Developer's Licence No.: 01569 - Term: Leasehold 100 years from 12 August 2003
- Location: Mile 18 Loc 9697W at Sunrise Terraces - 8P No. A07/19-00096-2912-8P01 dated 12 August 2003 & A07/19-00096-2912-8P02 dated 21 August 2003
- Expected T.O.P. Date: 30 June 2018 - Expected Legal Completion Date: 30 June 2021

DISCLAIMER: This information contained herein is subject to change and cannot form part of an offer or contract. While every reasonable care has been taken in providing this information, the writer or its agents accept no liability for any inaccuracies. Whilst we believe the contents of this brochure to be correct and accurate at date of print, they cannot be regarded as statements or representations of fact. Statements in the brochure are solely for information, which serve only to give an approximate idea of the project. All stated representations and all plans are subject to any amendments or delays approved by the relevant authorities.



Where
**GARDEN
HOMES**
become the standard for
landed living

The word for "precious, beautiful, serene and awakening", Alana is nothing short of what its name implies.

Where modern architectural elements mingle effortlessly with rich, unspoiled landscaped textures one would naturally find on a Pacific island of Hawaii, Alana presents you with a refreshing take on luxury landed living with three-storey dual frontage garden homes in the heart of Sunrise Terrace.



Key Amenities

- Ang Mo Kio Hub
- Junction 8 Shopping Centre
- Greenwich V
- Orchid Country Club
- Singapore Island Country Club
- Yio Chu Kang Stadium

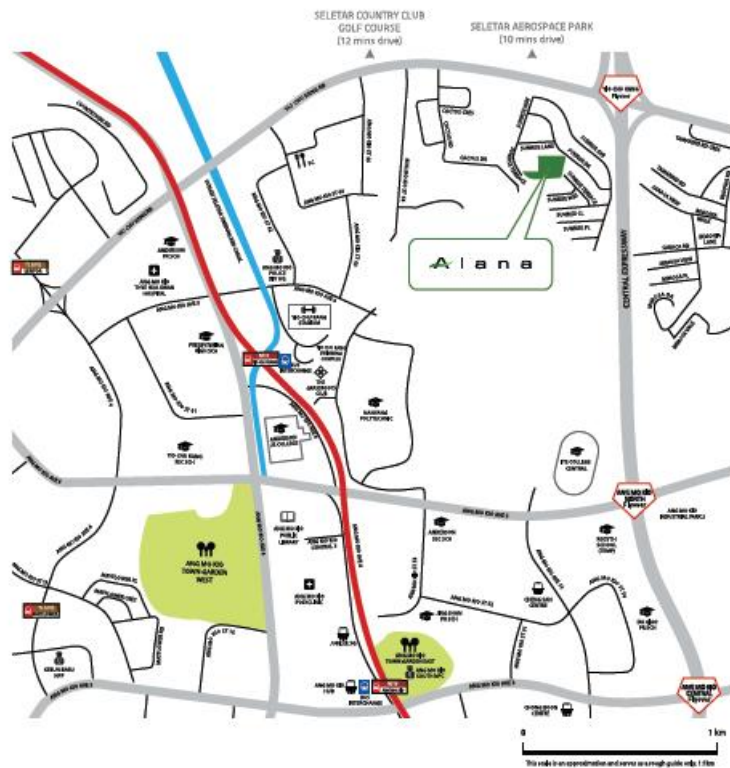
Accessibility

- Yio Chu Kang MRT Station
- Ang Mo Kio MRT Station
- Lentor MRT Station (future)
- Central Expressway (CTE)
- Seletar Expressway (SLE)
- Tampines Expressway (TPE)

Education

- Anderson Junior College
- Chatsworth International School
- CHIJ St Nicholas Girls' School
- Nanyang Polytechnic
- Rosyth School

Where LOCATION is everything



	FOOD CENTRE		SHOPPING CENTRE		SPORTS AMENITY
	LIBRARY		POLICE CENTRE		PARK
	EDUCATIONAL INSTITUTION		POLYLINE		COMMUNITY CENTRE

Nestled in the heart of Sunrise Terrace, Alana offers excellent connectivity and easy access to all parts of the island. A home where you can escape the city without ever leaving it behind, Alana connects you to reputable schools, major transport links and a wide array of lifestyle amenities.

Alana

DESIGNED

around how you live

A balanced, fluid layout reminiscent of a chain of Polynesian islands, Alana's four lifestyle clusters are unique - each offering its own distinctive charm and appeal, while accommodating a plethora of social, leisure and lifestyle activities. Everything you could desire is right here, awaiting your arrival every day.

LEGEND

1. ALOHA ENTRANCE COURT
2. GYMNASIUM
3. LAWN
4. WAILUA 30M POOL
5. NIIHAU SPA GARDEN
6. SPA GARDEN PAVILION
7. GARDEN PAVILION
8. MOKU OLA 50M POOL
9. POOL DECK
10. POOLSIDE PAVILION
11. OAHU CENTRAL GARDEN
12. ANAHULU WATER COURT
13. CHILDREN'S PLAYGROUND
14. POCKET GARDEN

HAWAIIAN-INSPIRED CLUSTERS

- | | |
|---|---|
| ■ KAI | ■ NANI |
| ■ WATER | ■ COLOUR |
| ■ KALA | ■ OLA |
| ■ SUNNY | ■ WELLNESS |



Unit Types	Number of Units	Total Strata Area (sq ft)
Type A Series:	9	3,358 - 3,509
Type B Series:	6	3,444 - 3,735
Type C Series:	34	3,025 - 3,261
Type D Series:	29	2,756 - 2,939



KALA

a place for renewal

The Hawaiian word for "sun", KALA is where you'll find Alana's 50-metre pool and garden pavilions. After a workout, cool off with the gentle breeze from swaying palm trees. Lounge by the poolside, take a dip, swim a lap or two amidst a postcard-perfect setting.



OLA

a space for wellness

The Hawaiian word for "healthy", OLA is the place to restore yourself. Against a lush backdrop framed by musa, ferns, bucida and other tropical plants; refresh your mind and body at the Niihau Spa Garden followed by an intimate gathering at the Spa Garden Pavilion.





KAI

a retreat for the senses

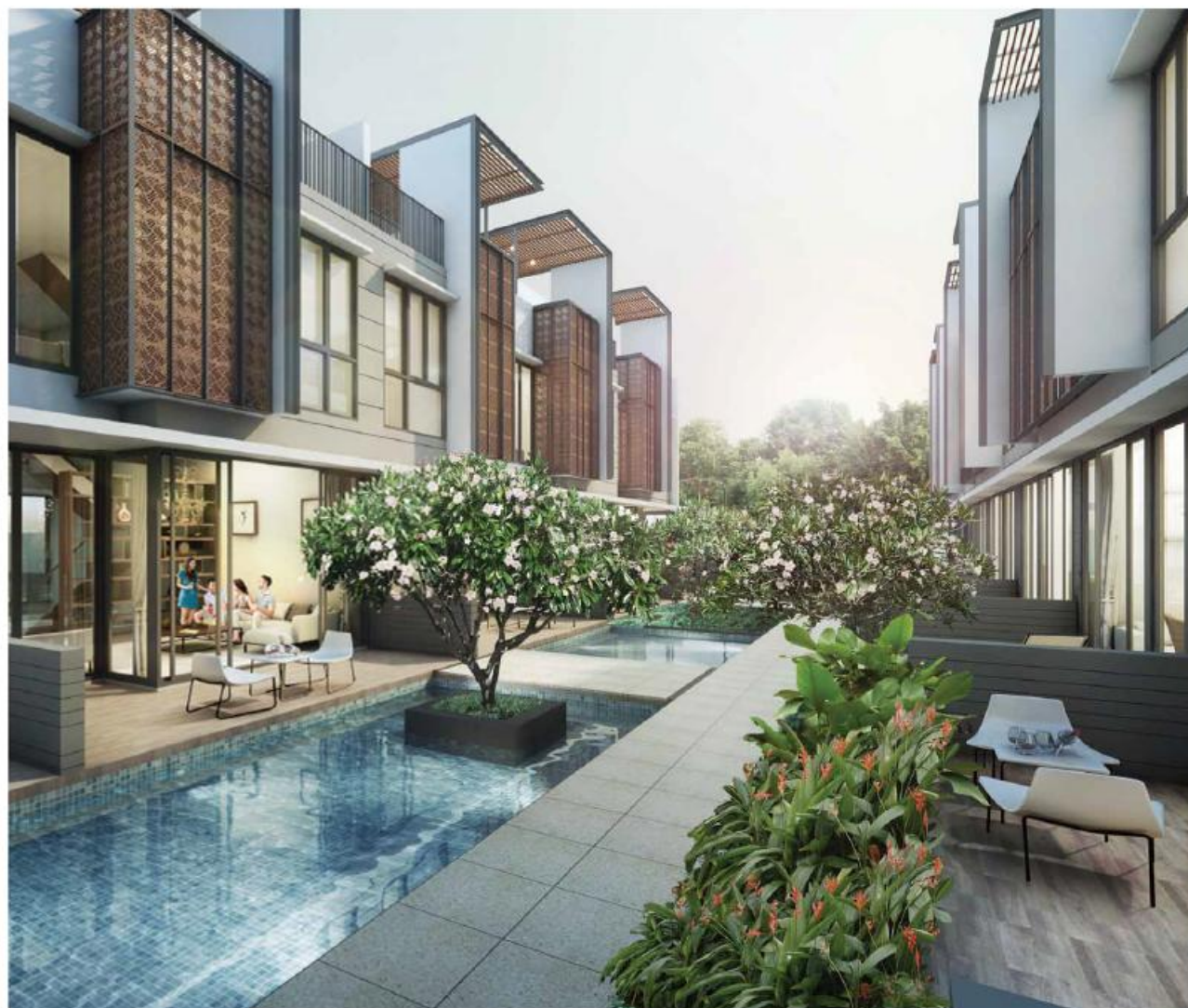
The Hawaiian word for "ocean", KAI naturally uplifts the senses. Enjoy the colours of native tropical flora such as plumeria and sea hibiscus amidst soothing water features, while enjoying a relaxing Sunday with your favourite book at your own retreat.



NANI

a garden of beauty

The Hawaiian word for "beautiful", NANI is a reflection of its own name with its colourful and vibrant flora. Designed to accommodate your social and recreational activities, enjoy an evening stroll on the colourful walkway bedecked with plumeria and peacock flowers, or host a private dinner party for family and friends.





Four

LIVING

spaces with unlimited
lifestyle possibilities

Scattered throughout Alana's thematic clusters are a range of four distinctive unit types catering to diverse lifestyle needs and desires. While each type is unique in its own way, all 78 homes share quintessential Alana features such as open-to-sky roof terraces with trellises, unique dual frontages for maximum views and private basement parking for 2 cars, as well as a distinctive screened deck and exterior for each cluster.



Double your

VIEWING PLEASURE

Designed to maximise views and allow for optimal sunlight to come in, every 3-storey unit features dual frontages affording you vistas of the tropical gardens on both sides or a garden view on one side while overlooking the glistening reflection of the pool on the other.

Unit #170 & #180 Floor Plan



BASEMENT PLAN



1ST STOREY PLAN



2ND STOREY PLAN



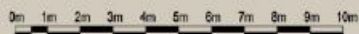
3RD STOREY PLAN

TYPE A SERIES

Expansive living areas spanning 7.5 metres wide

A space to spread out and make yourself at home, Type A Series boasts generous unit widths of 7.5 metres and an expansive living area where families can come together and children can play.

- Number of units: 9
- Private basement parking for 2 cars
- Wet & dry kitchens
- Large master bedroom with private terrace



Unit B710 Floor Plan



BASEMENT PLAN



1ST STOREY PLAN



2ND STOREY PLAN



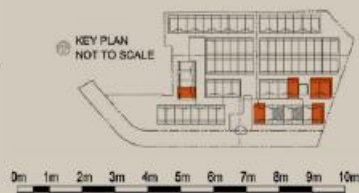
3RD STOREY PLAN

TYPE B SERIES

Designed for multi-generational living

Specially suited for multi-generational families, Type B Series offers the option of an extra room on the ground floor with private lift access to all storeys, and a large roof terrace providing a great place for family gatherings, catered parties, soaking up the sun or just your morning coffee.

- Number of units: 6
- Private lift access to all storeys
- Option for extra room on 1st storey
- Large open-to-sky roof terrace on 3rd storey



Unit #116 Floor Plan



BASEMENT PLAN



1ST STOREY PLAN



2ND STOREY PLAN



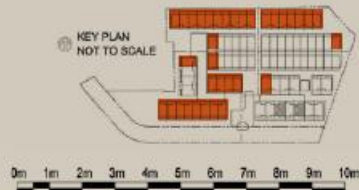
3RD STOREY PLAN

TYPE C SERIES

A space for togetherness and privacy

For those who seek a space that encourages inclusiveness while offering privacy, Type C Series is an excellent choice with its master bedroom with a private terrace, wet & dry kitchens as well as a private roof terrace on the top floor serving as your retreat from the bustle of city life.

- Number of units: 34
- Private basement parking for 2 cars
- Option for extra room on 1st storey
- Bedroom on top floor with private terrace



Unit #104 & #108 Floor Plan



BASEMENT PLAN



1ST STOREY PLAN



2ND STOREY PLAN



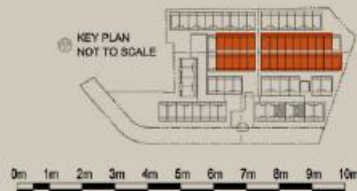
3RD STOREY PLAN

TYPE D SERIES

Perfect for entertaining

Created for those who love company, Type D Series features an optional guest room on the 1st storey, study corner on the 2nd storey and a bedroom with a private roof terrace on the 3rd storey. The fluid space between the living and dining areas form a continuous space ideal for entertaining. With the sky as your ceiling, the roof terrace provides the ideal setting for an intimate gathering under the stars or a private late night cocktail.

- Number of units: 29
- Private basement parking for 2 cars
- Fluid space between living and dining areas
- Wet kitchen only



Where your front door
becomes the gateway, to

LUXURY BEFITTING

your lifestyle

Alana's spacious interior breathes design.
Every touch point thoughtful and inspiring, fitted
with fixtures and finishes that reflect the luxury and
relaxed lifestyle of garden living, while embracing
you with a genuine sense of place.

