

Deer
Vois
Private

L U X U R Y
H O M E S





Artist's Impression

JERVOIS PRIVÉ
1 BEDROOM + STUDY
 TYPE A1

51 SQ.M. / 549 SQ.FT.
 (include 5 SQ.M. PES/Balcony, 3 SQ.M. A/C Ledge)

UNIT

01-04 (A1-G)



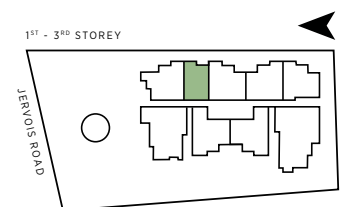
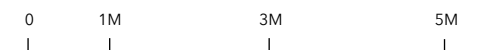
02-04, 03-04



- F = Fridge
- WM = Washer and Dryer
- DB = Distribution Board
- IH = Induction Hob
- O = Oven

The balcony shall not be enclosed. Only balcony screens are to be used. For an illustration of the approved balcony screen, please refer to Page 12-13 of this brochure.

All plans are subjected to amendments as may be approved by the relevant authorities. Floor areas are approximate measurements and are subjected to final survey. Building Plan no: A1840-01705-2017 BP03 Date: 05 November 2019



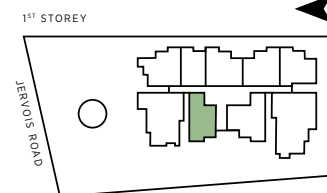
1 BEDROOM + STUDY DELUXE

TYPE A2-G

59 SQ.M. / 635 SQ.FT.
(include 7 SQ.M. PES. 3 SQ.M. A/C Ledge)

UNIT

01-01



F = Fridge
WM = Washer and Dryer
DB = Distribution Board
IH = Induction Hob
O = Oven

The balcony shall not be enclosed. Only balcony screens are to be used. For an illustration of the approved balcony screen, please refer to Page 12-13 of this brochure.

All plans are subjected to amendments as may be approved by the relevant authorities. Floor areas are approximate measurements and are subjected to final survey. Building Plan no: A1840-01705-2017 BP03 Date: 05 November 2019

2 BEDROOM

TYPE B1

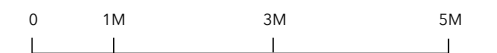
68 SQ.M. / 732 SQ.FT.
(include 9 SQ.M. PES/ Balcony, 3 SQ.M. A/C Ledge)

UNIT

01-03 (B1-G)



02-03, 03-03



F = Fridge
WM = Washer and Dryer
DB = Distribution Board
IH = Induction Hob
O = Oven

The balcony shall not be enclosed. Only balcony screens are to be used. For an illustration of the approved balcony screen, please refer to Page 12-13 of this brochure.

All plans are subjected to amendments as may be approved by the relevant authorities. Floor areas are approximate measurements and are subjected to final survey. Building Plan no: A1840-01705-2017 BP03 Date: 05 November 2019

2 BEDROOM TYPE B2

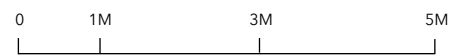
65 SQ.M. / 700 SQ.FT.
(include 6 SQ.M. PES/ Balcony, 3 SQ.M. A/C Ledge)

UNIT

01-05 (B2-G)



02-05, 03-05, 04-05, 05-05



F = Fridge
WM = Washer and Dryer
DB = Distribution Board
IH = Induction Hob
O = Oven

The balcony shall not be enclosed. Only balcony screens are to be used. For an illustration of the approved balcony screen, please refer to Page 12-13 of this brochure.

All plans are subjected to amendments as may be approved by the relevant authorities. Floor areas are approximate measurements and are subjected to final survey. Building Plan no: A1840-01705-2017 BP03 Date: 05 November 2019

2 BEDROOM TYPE B3

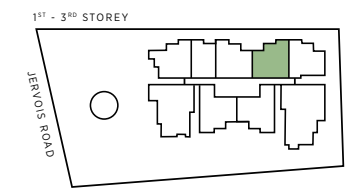
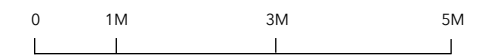
64 SQ.M. / 689 SQ.FT.
(include 6 SQ.M. PES/ Balcony, 3 SQ.M. A/C Ledge)

UNIT

01-06 (B3-G)



02-06, 03-06, 04-06, 05-06



F = Fridge
WM = Washer and Dryer
DB = Distribution Board
IH = Induction Hob
O = Oven

The balcony shall not be enclosed. Only balcony screens are to be used. For an illustration of the approved balcony screen, please refer to Page 12-13 of this brochure.

All plans are subjected to amendments as may be approved by the relevant authorities. Floor areas are approximate measurements and are subjected to final survey. Building Plan no: A1840-01705-2017 BP03 Date: 05 November 2019

2 BEDROOM TYPE B4

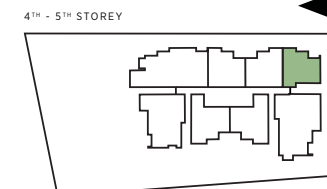
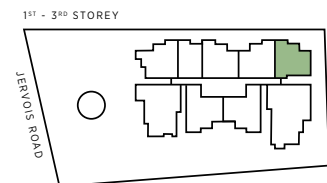
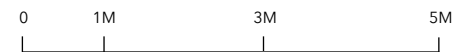
66 SQ.M. / 710 SQ.FT.
(include 6 SQ.M. PES/ Balcony, 3 SQ.M. A/C Ledge)

UNIT

01-07 (B4-G)



02-07, 03-07, 04-07, 05-07



F = Fridge
WM = Washer and Dryer
DB = Distribution Board
IH = Induction Hob
O = Oven

The balcony shall not be enclosed. Only balcony screens are to be used. For an illustration of the approved balcony screen, please refer to Page 12-13 of this brochure.

All plans are subjected to amendments as may be approved by the relevant authorities. Floor areas are approximate measurements and are subjected to final survey. Building Plan no: A1840-01705-2017 BP03 Date: 05 November 2019

2 BEDROOM + STUDY TYPE B5S

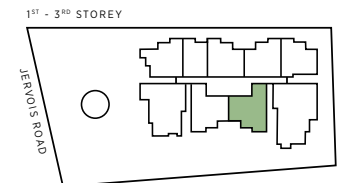
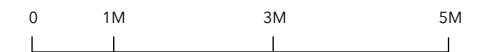
75 SQ.M. / 807 SQ.FT.
(include 7 SQ.M. PES/ Balcony, 3 SQ.M. A/C Ledge)

UNIT

01-09 (B5S-G)



02-09, 03-09, 04-09, 05-09



F = Fridge
WM = Washer and Dryer
DB = Distribution Board
IH = Induction Hob
O = Oven

The balcony shall not be enclosed. Only balcony screens are to be used. For an illustration of the approved balcony screen, please refer to Page 12-13 of this brochure.

All plans are subjected to amendments as may be approved by the relevant authorities. Floor areas are approximate measurements and are subjected to final survey. Building Plan no: A1840-01705-2017 BP03 Date: 05 November 2019

2 BEDROOM + STUDY

TYPE B6S

75 SQ.M. / 807 SQ.FT.

(include 7 SQ.M. Balcony, 3 SQ.M. A/C Ledge)

UNIT

02-01, 03-01, 04-01, 05-01



F = Fridge
 WM = Washer and Dryer
 DB = Distribution Board
 IH = Induction Hob
 O = Oven

The balcony shall not be enclosed. Only balcony screens are to be used. For an illustration of the approved balcony screen, please refer to Page 12-13 of this brochure.

All plans are subjected to amendments as may be approved by the relevant authorities. Floor areas are approximate measurements and are subjected to final survey. Building Plan no: A1840-01705-2017 BP03 Date: 05 November 2019

3 BEDROOM CLASSIC

TYPE C1

103 SQ.M. / 1109 SQ.FT.

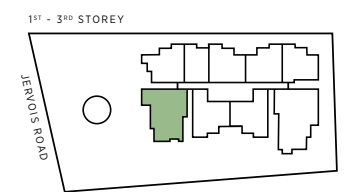
(include 8 SQ.M. PES/ Balcony, 6 SQ.M. A/C Ledge)

UNIT

01-02 (C1-G)



02-02, 03-02, 04-02, 05-02



F = Fridge
 WM = Washer and Dryer
 DB = Distribution Board
 GH = Gas Hob
 O = Oven
 DW = Dish Washer

The balcony shall not be enclosed. Only balcony screens are to be used. For an illustration of the approved balcony screen, please refer to Page 12-13 of this brochure.

All plans are subjected to amendments as may be approved by the relevant authorities. Floor areas are approximate measurements and are subjected to final survey. Building Plan no: A1840-01705-2017 BP03 Date: 05 November 2019

3 BEDROOM DELUXE

TYPE D1

129 SQ.M. / 1389 SQ.FT.
(include 17 SQ.M. PES/ Balcony, 9 SQ.M. A/C Ledge)

UNIT

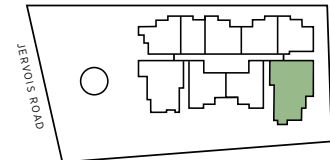
01-08 (D1-G)



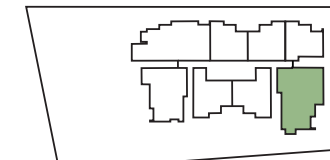
02-08, 03-08, 04-08, 05-08



1st - 3rd STOREY



4th - 5th STOREY



- F = Fridge
- WM = Washer and Dryer
- DB = Distribution Board
- GH = Gas Hob
- O = Oven
- SO = Steam Oven
- W = Wine Chiller
- DW = Dish Washer

The balcony shall not be enclosed. Only balcony screens are to be used. For an illustration of the approved balcony screen, please refer to Page 12-13 of this brochure.

All plans are subjected to amendments as may be approved by the relevant authorities. Floor areas are approximate measurements and are subjected to final survey. Building Plan no: A1840-01705-2017 BP03 Date: 05 November 2019

4 BEDROOM

TYPE E1

136 SQ.M. / 1464 SQ.FT.
(include 14 SQ.M. Balcony, 6 SQ.M. A/C Ledge)

UNIT

04-03, 05-03 (E1)



- F = Fridge
- WM = Washer and Dryer
- DB = Distribution Board
- IH = Induction Hob
- O = Oven
- DW = Dish Washer
- SO = Steam Oven
- W = Wine Chiller

The balcony shall not be enclosed. Only balcony screens are to be used. For an illustration of the approved balcony screen, please refer to Page 12-13 of this brochure.

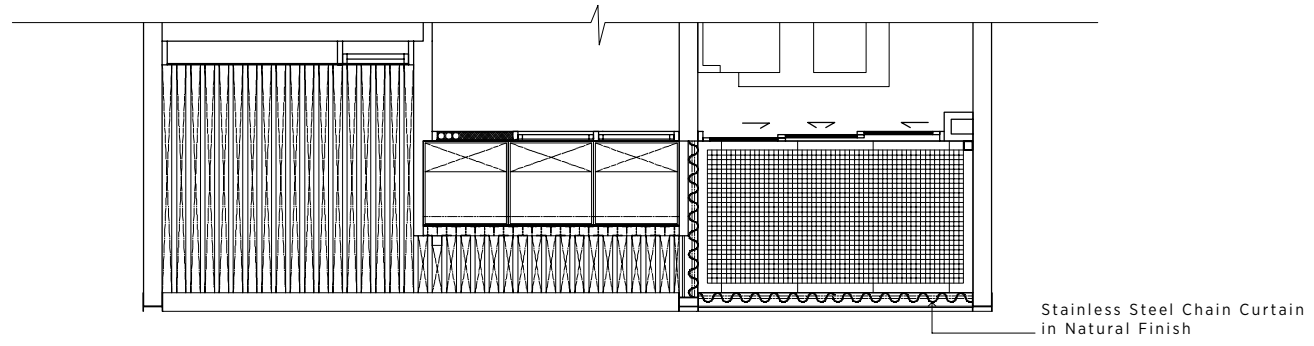
All plans are subjected to amendments as may be approved by the relevant authorities. Floor areas are approximate measurements and are subjected to final survey. Building Plan no: A1840-01705-2017 BP03 Date: 05 November 2019



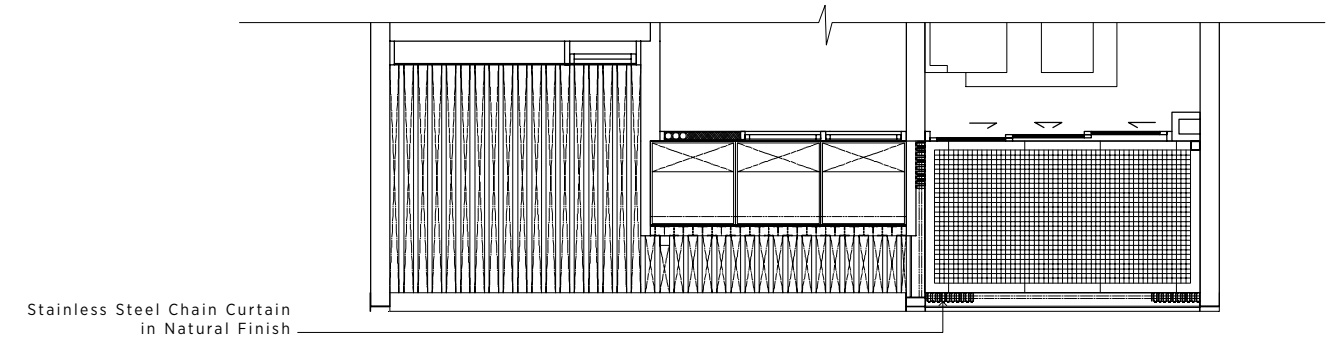
4th - 5th STOREY



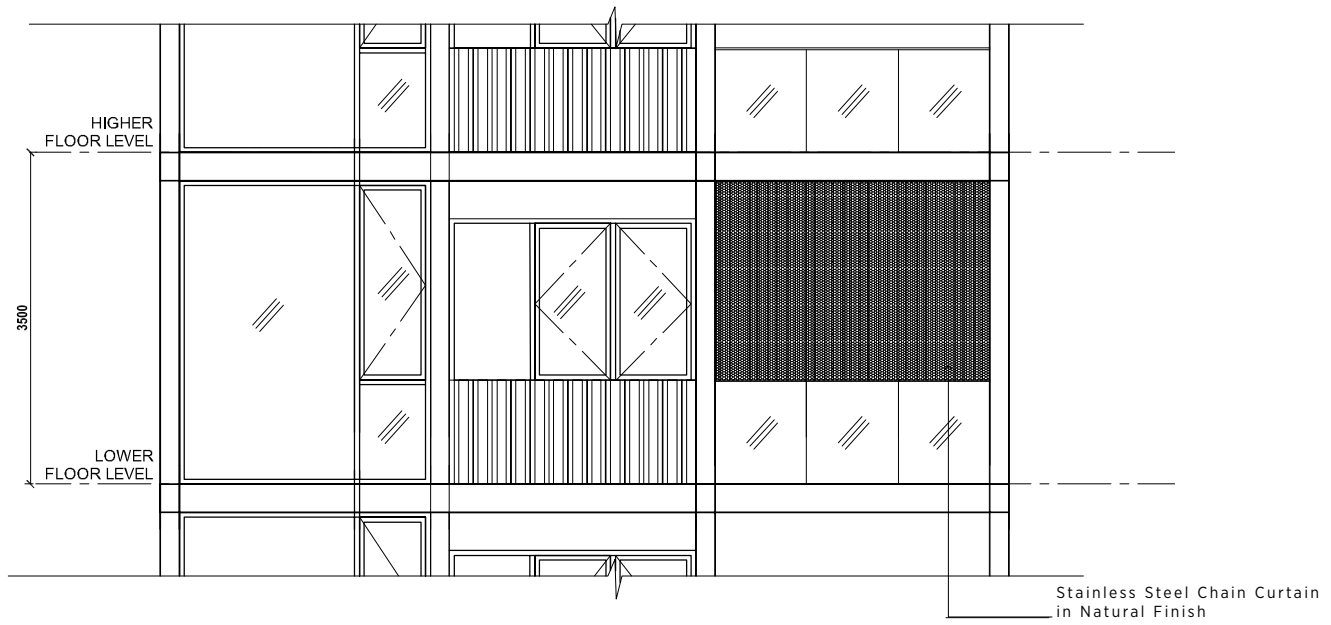
Plan
Balcony / PES Screen (Fully Close)



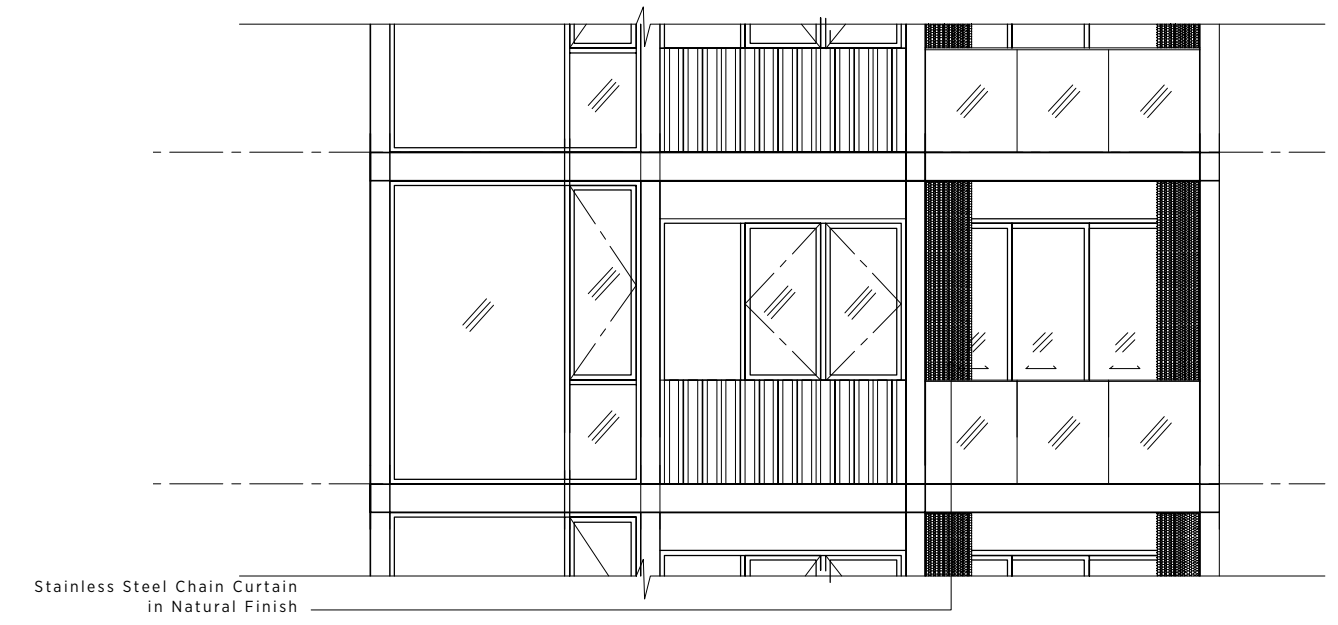
Plan
Balcony / PES Screen (Fully Open)



Elevation
Balcony / PES Screen (Fully Close)



Elevation
Balcony / PES Screen (Fully Open)







JER VOIS PRIVE

A Premium Development by



DEVELOPER
Midas Land Pte Ltd

COMPANY REGISTRATION NUMBER
201735700G

DEVELOPER'S LICENCE NUMBER
C1290

ENCUMBRANCES
Mortgage(s) in favour of Hong Leong Finance Limited

TENURE OF LAND
Estate in Fee Simple

LOCATION
1532C & 1533M of Town Subdivision 24 at Jervois Road

EXPECTED DATE OF VACANT POSSESSION
1 January 2023

EXPECTED DATE OF LEGAL COMPLETION
1 January 2026

ARCHITECT
Yip Yuen Hong of ipli Architects

LANDSCAPE ARCHITECT
Salad Dressing

SHOWSUITES INTERIOR DESIGNER
Peter Tay of Peter Tay Studio

BRANDING CONSULTANT
The Press Room

DISCLAIMER

While reasonable care has been taken in preparing this brochure, the developer and its agents shall not be held responsible for any inaccuracies or omissions, including but not limited to any variations arising from any change of facts or circumstances occurring after the date of print of this brochure.

All visual representations including drawings, photographs, art renderings, and illustrations are intended to portray only an artist's impression of the development and shall not be regarded as representations of fact. All information, specifications, plans and visual representations are current at the time of print of this brochure and are subject to such changes as may be required by the developer and/or required or approved by the relevant authorities and notified to the developer after the date of print of this brochure, and shall not form part of any offer or contract nor constitute any warranty by the developer. All floor areas and other measurements are approximate only and are subject to final survey. The Sale and Purchase Agreement shall form the entire agreement between the developer and the purchaser, and supersedes and cancels in all respects all previous representations, warranties, promises, inducements or statements of intention, expressions of opinion, whether written or oral made by the developer and/or its agents which are not embodied in the Sale and Purchase Agreement, unless approved by the Controller of Housing and expressly agreed to in writing between the parties.



A Premium Development by

