



THE
CONTINUUM

Where everything begins
with endless possibilities

Designed for all your nuances,
The Continuum grows gracefully with you.

Your continuous pursuit of elevated living has led you here.

Let The Continuum take it higher with an intricate interplay of lifestyle choices that stretch from the ground to picturesque rooftop decks.

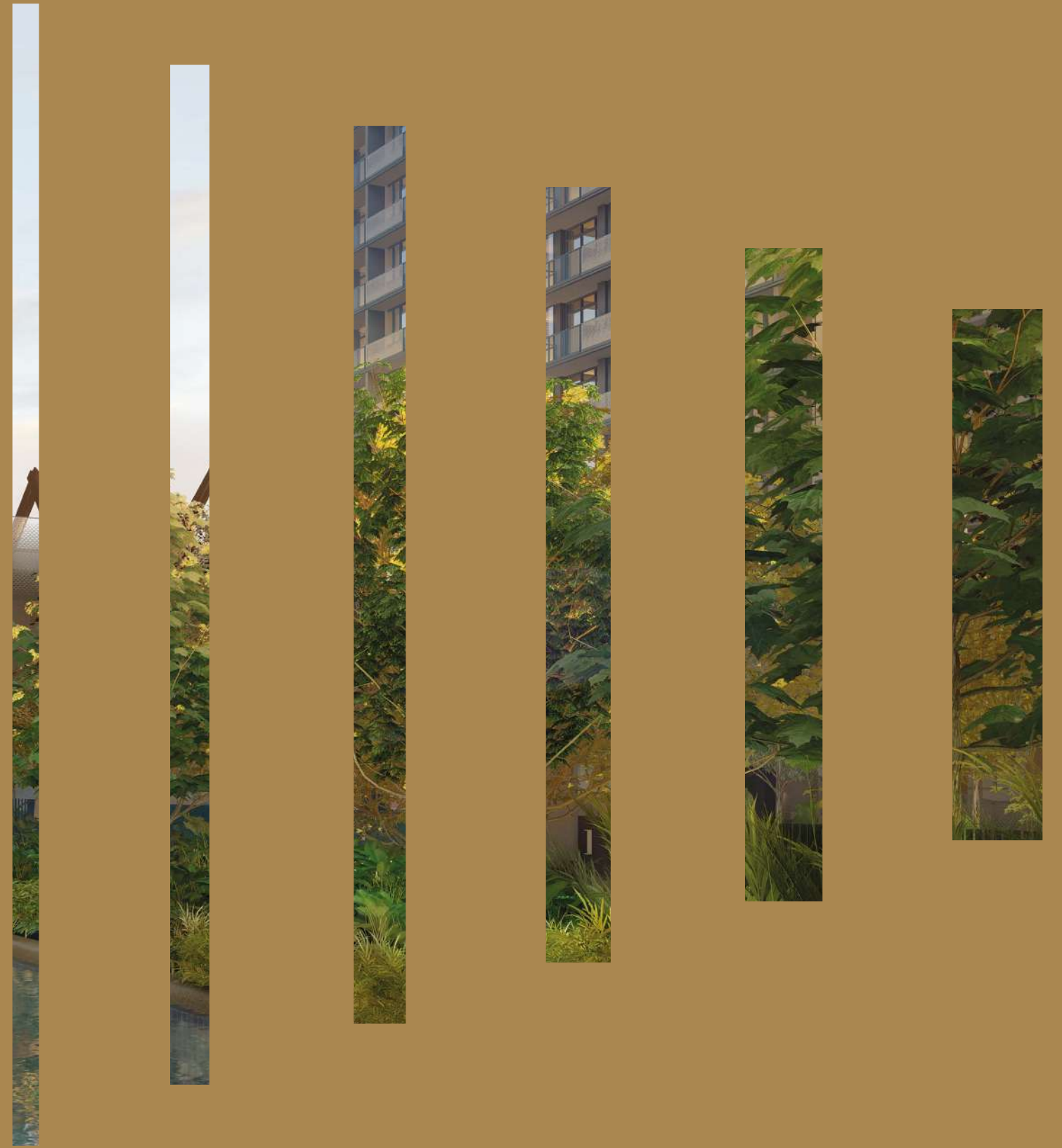
All around, reverberations of extraordinary moments inspire a million more.

Welcome to a freehold home that unceasingly invigorates as you savour them all.

A fluid expression of rich diversity
and modern luxury awaits.



Dreams you wish would
last forever, do.



“A dialogue of comfort and splendour between two parallel plots, the Continuum Bridge
brings across seamless living through all of life’s ultimate escapades.”

— KINGSLEY NG, DIRECTOR
P&T ARCHITECTS

The Continuum makes this possible by perfecting the
finest details, in a home where space meets timelessness.



Build your everlasting legacy on the largest freehold plot in the East.

One exclusive address, two majestic sites, a myriad of lifestyles. Eternally yours.



ARTIST'S IMPRESSION

Nestled in a cultural oasis on the edge of the city, a special place in the heart of life.



Neighbouring Amenities

YOUR EVOLVING, ECLECTIC NEIGHBOURHOOD

Wander a backyard that spans nature, culture and the city

Minutes away from the city and surrounded by the excitements of Katong, East Coast and Paya Lebar, The Continuum captures the imagination of those who want it all. From this prime location, flow seamlessly through your passions and aspirations, with time to appreciate the moments in between.

East Coast

FAVOURITE PASTIMES IN AN OCEAN OF TRANQUILITY

Embracing the sea from Changi to Marina Bay, East Coast is Singapore's largest park that offers a unique recreational experience.



FOR ILLUSTRATION ONLY
EAST COAST PARK



FOR ILLUSTRATION ONLY
COASTAL PLAYGROVE



FOR ILLUSTRATION ONLY
XTREME SKATEPARK

Katong

OLD-WORLD CHARM GLITTERING WITH TRENDY HANGOUTS

Alive with Peranakan culture, Katong is a wondrous mosaic of chic boutiques, quaint cafes and buzzy pubs set in heritage shophouses.



FOR ILLUSTRATION ONLY
CHIN MEE CHIN



FOR ILLUSTRATION ONLY
PERANAKAN HOUSES



FOR ILLUSTRATION ONLY
NEPTUNE CAFÉ

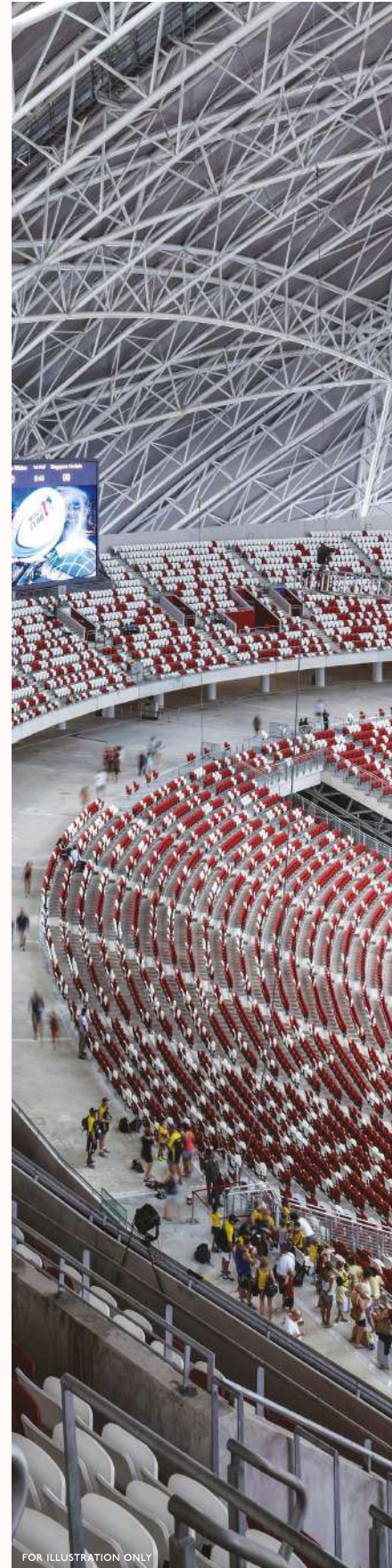
Paya Lebar / Kallang

WELL-CONNECTED MULTIFACETED HUB

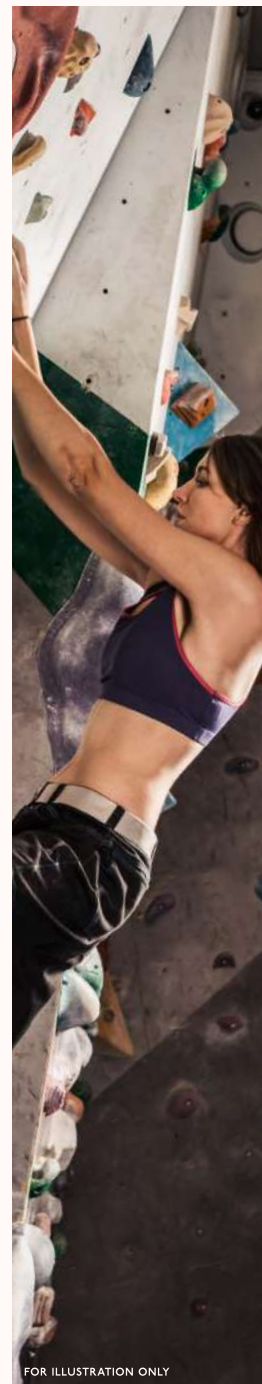
This lifestyle central surrounded by business and residential hubs is quickly becoming a social enclave with a multitude of dining, retail, and enrichment offerings.



PAYA LEBAR QUARTER
PHOTO CREDIT: LENDLEASE SINGAPORE



NATIONAL STADIUM



BOULDER*



ION ORCHARD



GARDENS BY THE BAY



MARINA BAY DISTRICT

City

WORLD-CLASS BUSINESS AND PLEASURES

The Central Business District and Orchard belt are just minutes away from home, affording you time to relax and rejuvenate for work and play.




THE CONTINUUM


 N

0 1km 2km

FOR ILLUSTRATION ONLY

At the centre of your world, The Continuum revolves around you



EXCELLENCE AT EVERY LEVEL

From Tao Nan School to Victoria Junior College, a quality education pathway is right around the corner.



EASY ACCESS TO CBD

Proximity to the Central Business District earns you more time for the things that matter most.



A SPREAD OF NOSTALGIA

Traditional culinary artistry lives on in Chin Mee Chin Confectionery, Guan Hoe Soon Restaurant and more.



BRIMMING WITH CAFÉ CULTURE

Gems like the fashionable Neptune Café are another delicious way to enjoy the neighbourhood.



ADVENTURES ON THE SEA

Between PAssion WaVe @ East Coast and Kallang Water Sports Centre are endless hours of watercraft fun.



WEEKEND ESCAPES ON THE SHORE

Some of the most scenic picnic and kiting spots in the land, from East Coast Park to the Marina Barrage.



EVERYDAY SHOPPING

Get all your essentials at i12 Katong and Parkway Parade, a mall that resides in east-siders' hearts.



NICHE CHIC

Joo Chiat's rebirth as a boutique district features rising star SOJAO alongside a range of specialty stores.

There is always something to discover in an evolving neighbourhood steeped in history within the coveted District I5. To unwind, look east for a relaxing coastal park-scape and countless enrichments. Just minutes away, the city engages with world-class retail, dining and arts.

Education

PRESCHOOL

- 3 MIN MindChamps @ East Coast (Kinex)
- 6 MIN EtonHouse Pre-School Mountbatten 223
- 7 MIN Odyssey The Global Preschool (Still Road)

PRIMARY SCHOOL

- 3 MIN Tanjong Katong Primary School
- 3 MIN Kong Hwa School
- 5 MIN Haig Girls' School
- 8 MIN CHIJ (Katong) Primary
- 8 MIN Geylang Methodist School (Primary)
- 8 MIN Tao Nan School
- 8 MIN Ngee Ann Primary School

SECONDARY SCHOOL

- 3 MIN Chung Cheng High School (Main)
- 3 MIN Tanjong Katong Secondary School
- 4 MIN Broadrick Secondary School
- 7 MIN Dunman High School
- 8 MIN CHIJ Katong Convent
- 8 MIN Geylang Methodist School (Secondary)
- 9 MIN St Patrick's School

JUNIOR COLLEGE

- 8 MIN Victoria Junior College

UNIVERSITY

- 9 MIN James Cook University

INTERNATIONAL

- 3 MIN Canadian International School of Singapore
- 8 MIN Nexus International School (Singapore)

Business

- 13 MIN Marina Bay Financial District
- 14 MIN Raffles Place
- 16 MIN Changi Business Park

Dining

- 2 MIN Haig Road Market & Food Centre
- 3 MIN Dunman Food Centre
- 5 MIN Joo Chiat Food Centre
- 6 MIN Old Airport Road Food Centre & Shopping Mall
- 9 MIN Marine Parade Central Market & Food Centre

Shopping

- 1 MIN City Plaza
- 2 MIN KINEX
- 4 MIN Katong Shopping Centre
- 4 MIN Tanjong Katong Complex
- 4 MIN Paya Lebar Quarter Mall
- 6 MIN Parkway Parade
- 6 MIN SingPost Centre
- 7 MIN Paya Lebar Square
- 7 MIN Leisure Park Kallang
- 9 MIN Marina Square
- 11 MIN Bugis+
- 13 MIN Plaza Singapura

Nature

- 5 MIN East Coast Park & Beach
- 9 MIN Marina Reservoir
- 11 MIN Gardens by the Bay
- 13 MIN Marina Barrage

Transportation

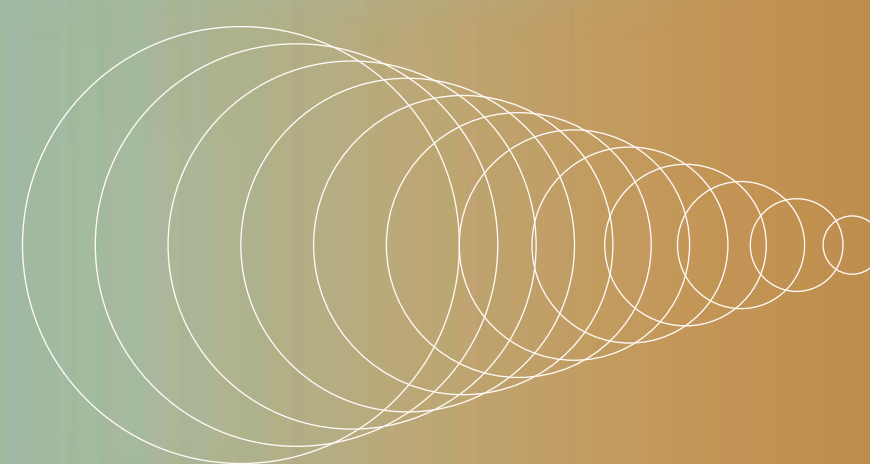
- 3 MIN Dakota MRT Station
- 7 MIN Tanjong Katong MRT Station*
- 8 MIN Paya Lebar MRT Station
- 8 MIN Katong Park MRT Station*
- 9 MIN Marine Parade MRT Station*
- 9 MIN Mountbatten MRT Station

*FUTURE STATIONS
ACTUAL TRAVEL TIMES MAY VARY, SUBJECT TO TRAFFIC CONDITIONS.



Property Facilities

URBAN LIVING, REDEFINED



Meticulously symbolic, resolutely unmistakable

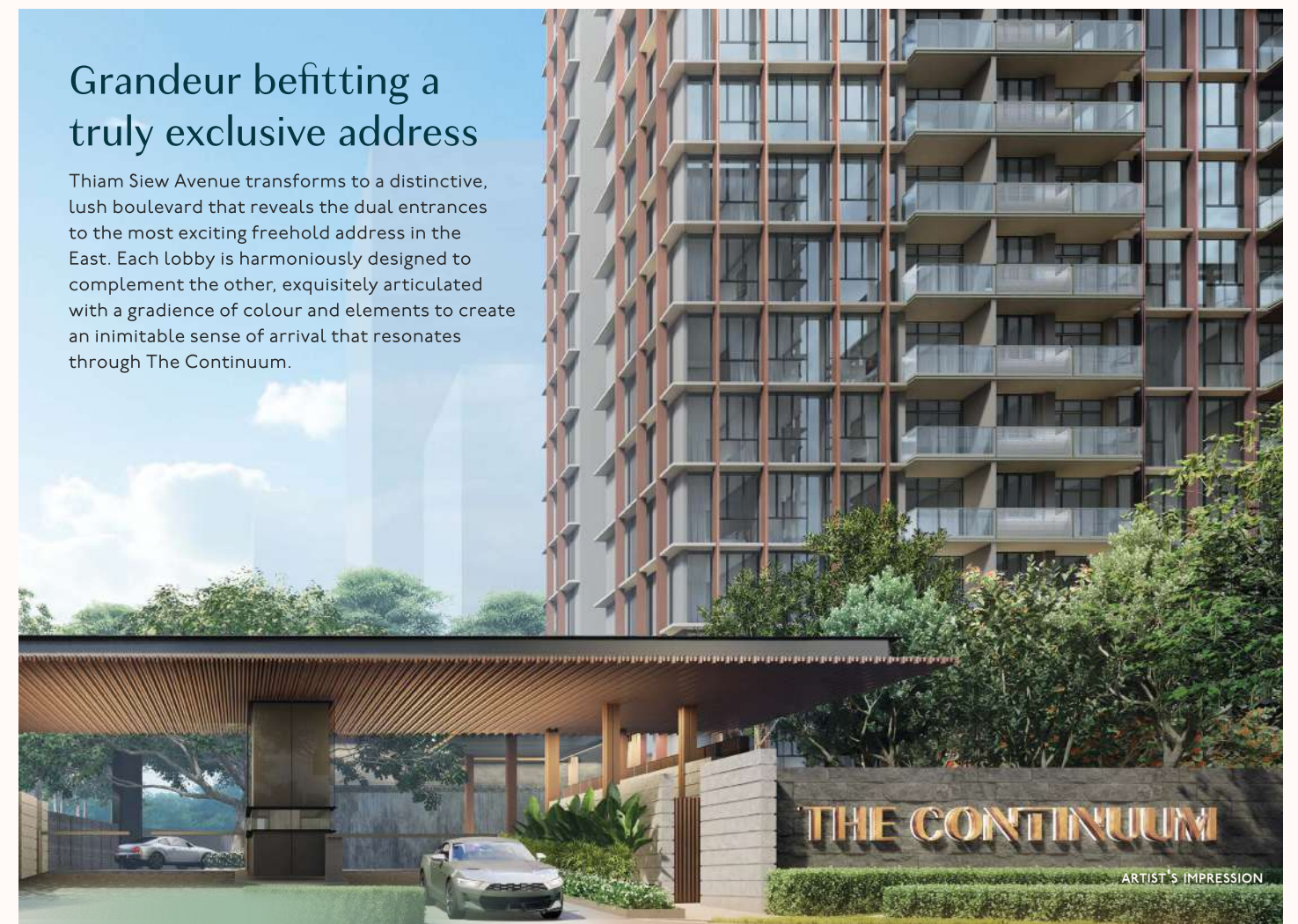
Two stunning silhouettes in an artful weave of luxury and comfort stretch parallel within the intricate enclave. The iconic Continuum Bridge, a unique modernist sculptural centrepiece, is where tastes and textures converge, connecting you with the other dimensions of this thoughtfully designed development. Meanwhile, high above the populace, two skyways that dazzle the night link breathtakingly curated Sky Gardens. Framed by sublime ocean and city views are class venues tailored for a range of leisure pursuits. An escape within a dream home where personal bests are achieved and social circles flourish.



ARTIST'S IMPRESSION

Grandeur befitting a truly exclusive address

Thiam Siew Avenue transforms to a distinctive, lush boulevard that reveals the dual entrances to the most exciting freehold address in the East. Each Lobby is harmoniously designed to complement the other, exquisitely articulated with a gradience of colour and elements to create an inimitable sense of arrival that resonates through The Continuum.



NORTH ENTRANCE



SOUTH ENTRANCE

ARTIST'S IMPRESSION

An undivided attention to detail

Complete amenities are meticulously curated and mapped with all generations and aspirations in mind. The Continuum promises continuity of well-being for the mind and body, heart and soul.

From the refurbished heritage bungalow north clubhouse to the ultra-contemporary south clubhouse. Find your social sweet spot anywhere along the spectrum of choices at The Continuum.

THIAM SIEW HOUSE

SOUTH SIDE SOCIAL



Timeless memories await at the refurbished Thiam Siew House. The clubhouse features a decorative wall that preserves the property's Marseille roof tiles, a mid-19th century innovation,

and original wooden casement windows restored from another house. The gate posts remain as they were, heralding memorable moments as they have done for decades.



Entertain or be entertained at South Side Social. Inspired by a glowing lantern, it brings a radiant dimension to the plethora of indoor experiences at The Continuum. In ambient contrast to

Thiam Siew House, The Continuum's second clubhouse picks up the tempo with two floors of merriment in three diverse spaces designed to indulge playful imaginations.



LIBRARY
Catch up on your thoughts in the quietest place around, which has the makings of a refreshing remote work environment.



CLUB ROOM
Designed to charm and furnished for comfort, with ample room to celebrate all occasions from baby's full month to landmark birthdays.



SOUND ROOM
K-pop group nights, family singalongs or anytime you feel like breaking into song. Hours are always happy here.



GLASS HOUSE
Calming palettes create a warm ambience that complements tea parties as much as it inspires art workshops.

Sky

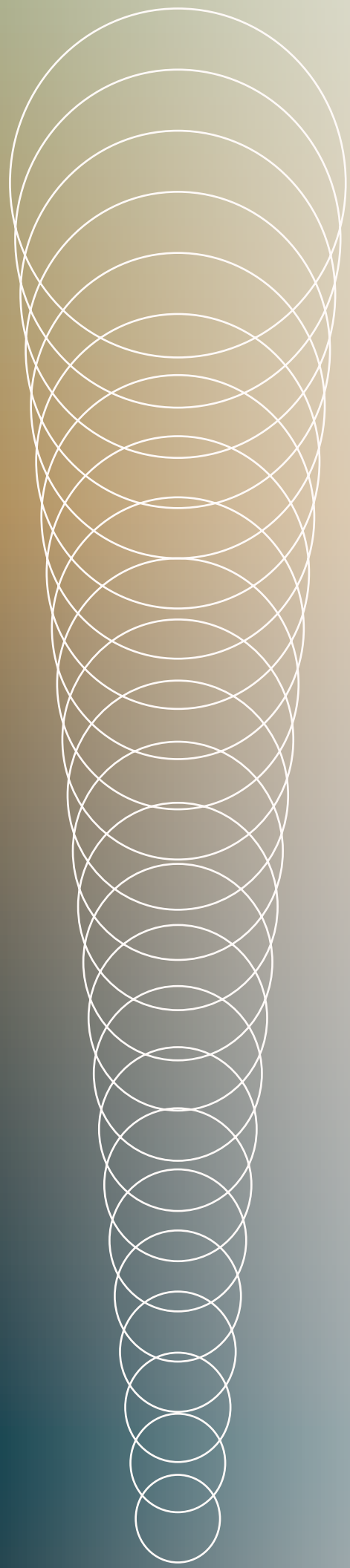
Elevated living from the ground up

Lavishly detailed from the lush landscaped grounds up to breathtaking heights, The Continuum is poised to turn moments into lasting memories.

Rejuvenation

Radiance

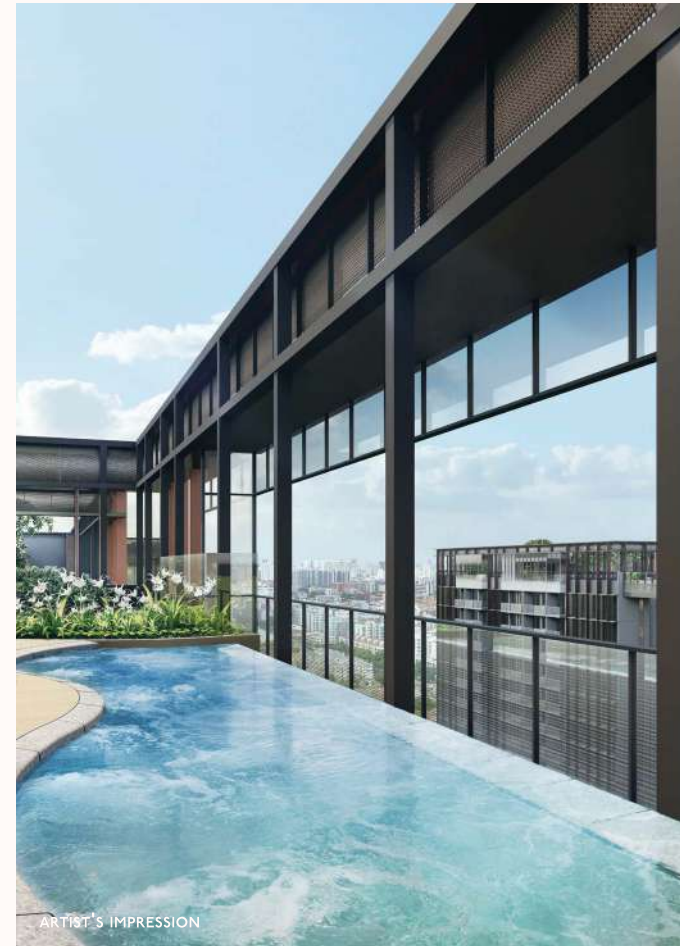
Celebration



ARTIST'S IMPRESSION

HAMMOCK DECK

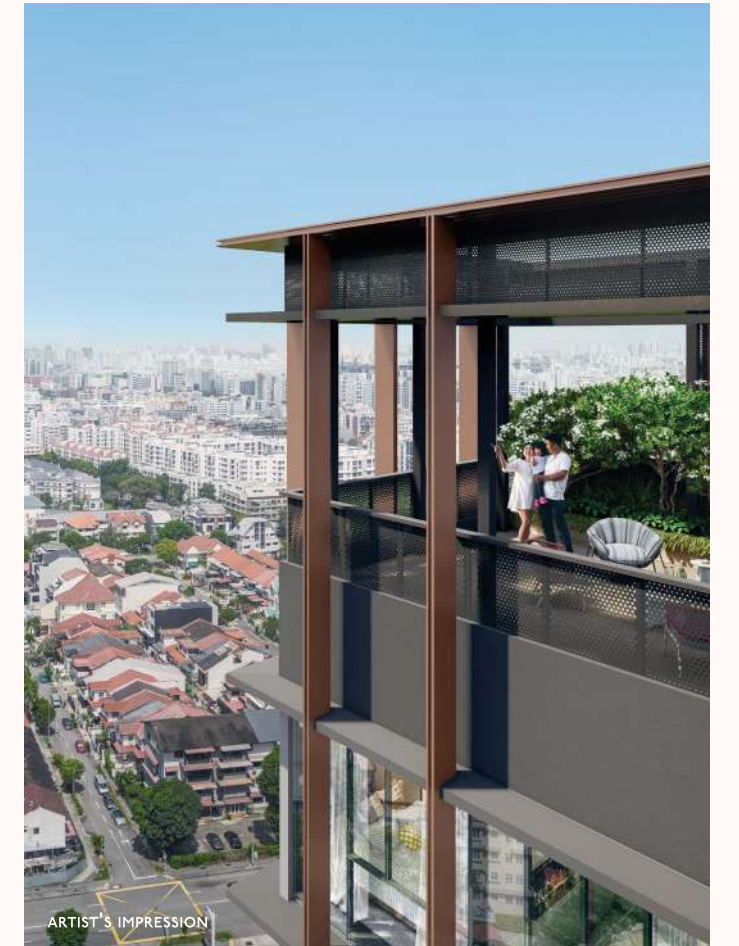
Drift on a daydream or stargaze a romantic evening away as you sway gently in the breeze amid a verdant Sky Garden.



ARTIST'S IMPRESSION

SKY JACUZZI

Relax in style high above the bustle as sweeping views of the coast or city skyline melt your worries away.



ARTIST'S IMPRESSION

SKY ROOF NORTH

Gather with friends new and old at this welcoming extension of your living room, or simply lean back and enjoy the view.



ARTIST'S IMPRESSION

AQUA GYM POOL

From low-impact exercise to resistance training, aqua bikes and other equipment offer a refreshing workout for all fitness levels.



ARTIST'S IMPRESSION

POOL PAVILION NORTH

Lap pools on either plot complement play and wellness pools to cater for serious swimming or fun family time.



ARTIST'S IMPRESSION

PLAYGROUND NORTH

Themed playgrounds woven into the landscape combine art and adventure for your kids to create new dimensions of play.

Ground

Enjoy the greater indoors

The Continuum features a selection of indoor venues that offer an array of bespoke experiences to enhance your favourite pastimes and pursuits.

North

North Plot



SKY BAR
This plush, inviting space is the perfect setting for romantic sunsets or intimate gatherings.



SKY FITNESS
Recharge your mind and body with a range of state-of-the-art equipment set amid spectacular views.



GRILL DECK & RESTING LOUNGE
Grill and chill at the rooftop barbeque area that comes with a well-furnished, air-conditioned dining room.

South Plot



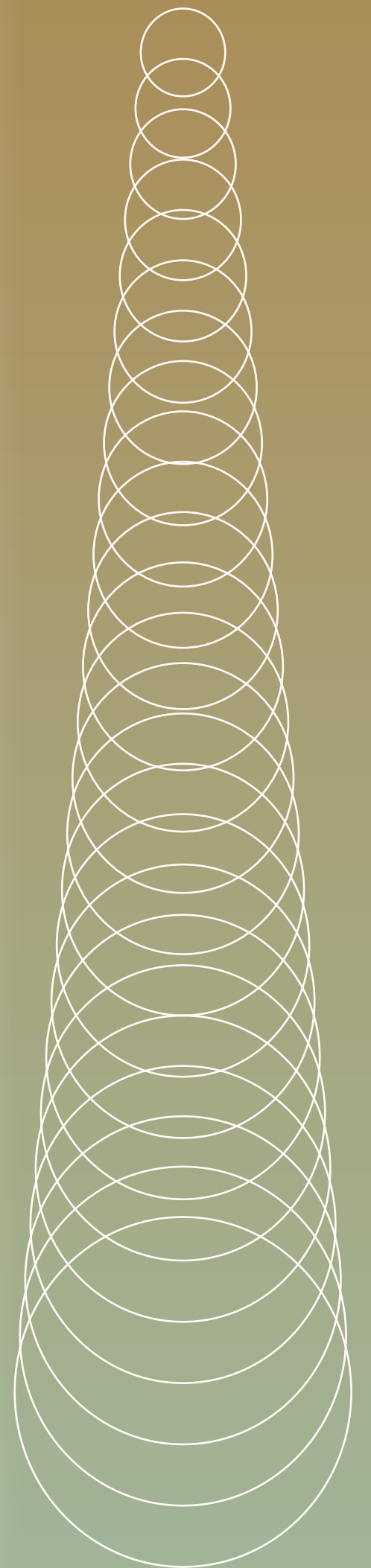
SKY CLUB
Take your guests' breath away with your culinary skills and panoramic views in this finely appointed private dining destination.



SKY GYM
Overlooking scenic serenity, yoga and pilates zones let you achieve holistic wellness at your own time and tempo.



SOCIAL ROOM
This flexible, spacious hall can be easily configured for a range of activities, from movie nights to ballroom dancing.



South

Overall Landscape Plan & Facilities

“The evolution of Tanjong Katong from an organic coastal area to a residential suburb inspired the transformation of landforms from south to north, from naturalistic to stylised to geometric. In juxtaposition, a geometric weave pattern based on a stylised Peranakan tile radiates from the conserved house to its surroundings, accentuating the historical links to its Peranakan roots.”

— HELEN SMITH-YEO, LANDSCAPE ARCHITECT

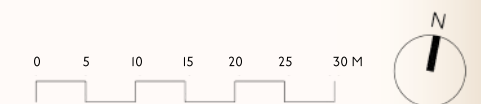


North Continuum

South Continuum

North Continuum

South Continuum



BP APPROVAL NO.: AI716-00010-2021-BP01 DATED 24 MARCH 2023
ARTIST'S IMPRESSION

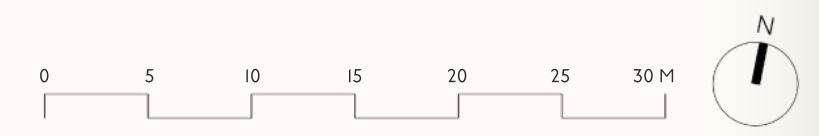
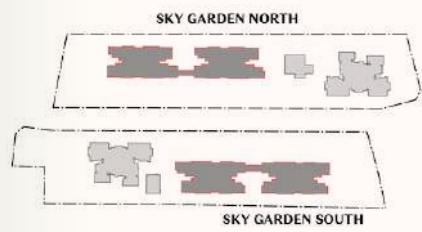
- | | | | | | | | |
|--|---|---|--|--|--|--|---|
| <p>A ARRIVAL ZONE NORTH</p> <ul style="list-style-type: none"> A1 Waterwall Drop-Off Plaza A2 Waterwall A3 Bicycle Parking <p>B PLAY ZONE NORTH</p> <ul style="list-style-type: none"> B1 Playground North B2 Playground Deck <p>F GARDEN ZONE NORTH</p> <ul style="list-style-type: none"> F1 Lobby Garden F2 Patterned Garden F3 Reflexology Garden | <p>C WELLNESS ZONE</p> <ul style="list-style-type: none"> C1 Lap Pool (33.3m Lap length x 7m lap width, 1.2m water depth) (approx. 270m² incl. Jacuzzi Cove) C2 Jacuzzi Cove (0.9m water depth) C3 Pool Deck C4 BBQ Pavilion C5 Resting Pavilion C6 Changing Room C7 Accessible Toilet C8 Outdoor Shower <p>G CONTINUUM BRIDGE</p> <ul style="list-style-type: none"> G1 Resting Pod G2 Bridge | <p>D HERITAGE ZONE</p> <ul style="list-style-type: none"> D1 Thiam Siew House D1.1 Library D1.2 Club Room D1.3 Foyer D2 Thiam Siew House Front Court D3 Front Court Lawn D4 Water Bowl D5 Roof Tiles Feature Wall D6 BBQ Pavilion D7 Accessible Toilet | <p>E FITNESS ZONE</p> <ul style="list-style-type: none"> E1 Multipurpose Lawn E2 Leisure Pool Deck E3 Leisure Pool (1.2m water depth) (approx. 244m² incl. Aqua Gym Pool & Jacuzzi Cove) E4 Aqua Gym Pool (1.2m water depth) E5 Jacuzzi Cove (0.9m water depth) E6 Aqua Gym Pool Deck E7 Outdoor Shower E8 Outdoor Gym E9 Yoga Lawn | <p>H ARRIVAL ZONE SOUTH</p> <ul style="list-style-type: none"> H1 Droplet Drop-Off Plaza H2 Droplet Pool H3 Bicycle Parking <p>L PLAY ZONE SOUTH</p> <ul style="list-style-type: none"> L1 Playground South L2 Water Play L3 Outdoor Shower L4 Lawn Steps L5 BBQ Pavilion L6 Multipurpose Recreational Court <p>M GARDEN ZONE SOUTH</p> <ul style="list-style-type: none"> M1 Sensory Garden M2 Lawn Garden M3 Reflexology Garden | <p>J "RIVER" POOL ZONE</p> <ul style="list-style-type: none"> J1 Cascading Children's & Toddler's Pool (0.5m x 0.3m water depth) (approx. 98m²) J2 Children's Pool Deck J3 Outdoor Shower J4 Resting Pavilion J5 Lawn Deck J6 Family Pool (0.9m water depth) (approx. 149m² incl. Wellness Pool) J7 Wellness Pool (0.9m water depth) J7.1 Swan Neck Cove J7.2 Hydrotherapy Pocket J7.3 Vichy Shower Beds J8 Lounge Deck J9 Resting Pavilion J10 Changing Room J11 Accessible Toilet | <p>K "LAKE" POOL ZONE</p> <ul style="list-style-type: none"> K1 50m Lap Pool (50m Lap length x 5.5m Lap width, 2.5m Lap length x 3.0m Lap width, 1.2m water depth) (approx. 543m² excl. Wellness Pool & Family Pool) K2 Pool Deck K3 Clubhouse Deck K4 Outdoor Shower K5 South Side Social K5.1 Glass House (1st Storey) K5.2 Sound Room (1st Storey) K5.3 Social Room (2nd Storey) | <p>N OTHER FACILITIES</p> <ul style="list-style-type: none"> N1 Guardhouse N2 Pedestrian Gate N3 Management Office N4 Generator Set N5 Bin Centre (Basement) N6 Electrical Substation (Basement) N7 Main Distribution Frame Room (Basement) N8 Consumer Switch Room (Basement) N9 Streetside Seating Pods N10 Ventilation Shaft N11 Water Tank (Roof) |
|--|---|---|--|--|--|--|---|

Roof Terrace Landscape Plan & Facilities

North Continuum



South Continuum



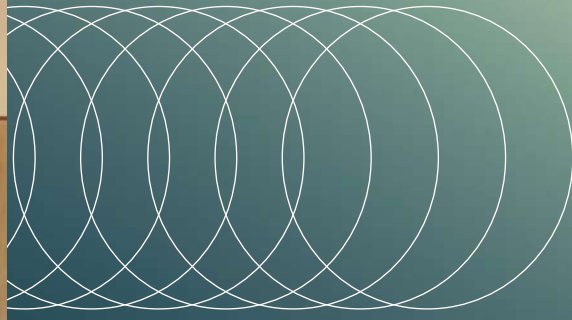
BP APPROVAL NO.: AI716-00010-2021-BPOI DATED 24 MARCH 2023
ARTIST'S IMPRESSION

North Continuum

- P SKY GARDEN NORTH (BLK 1 & 3)**
- P1 Sky Jacuzzi
- P2 Outdoor Lounge
- P3 Grill Deck
- P3.1 Resting Lounge
- P4 Community Garden
- P5 Bridge Deck
- P6 Hot Tub
- P7 Yoga Lawn
- P8 Outdoor Fitness Deck
- P9 Reading Deck
- P10 Sky Bar
- P11 Sky Fitness
- P12 Accessible Toilet
- P13 Outdoor Shower

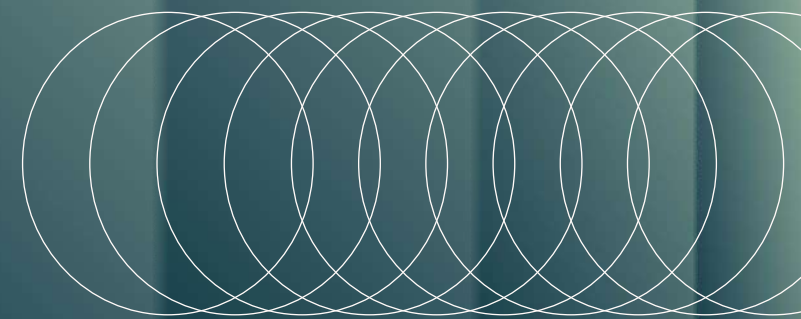
South Continuum

- Q SKY GARDEN SOUTH (BLK 6 & 8)**
- Q1 Grill Deck
- Q1.1 Resting Lounge
- Q2 Dining Deck
- Q3 Hammock Deck
- Q4 Swing Deck
- Q5 Bridge Deck
- Q6 Sky Jacuzzi
- Q7 Hot Tub
- Q8 Yoga Lawn
- Q9 Fitness Deck
- Q10 Garden Deck
- Q11 Sky Club
- Q12 Sky Gym
- Q13 Accessible Toilet
- Q14 Outdoor Shower
- N11 Water Tank (Roof)



Interiors

WHERE FORM, FUNCTION AND FINE LIVING CONVERGE

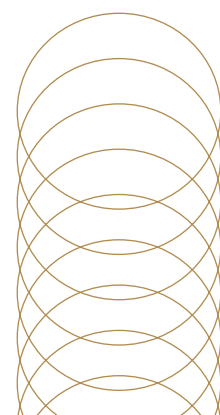




FOR ILLUSTRATION ONLY

Expressions of timelessness in next-generation spaces

Bespoke touches reveal elegant, enduring aesthetics in two distinct collections – Signature and Prestige. While flowing layouts are a hallmark of apartments at The Continuum, the two collections are exceptionally finished and dimensioned differently to suit various tastes and family sizes.



FOR ILLUSTRATION ONLY

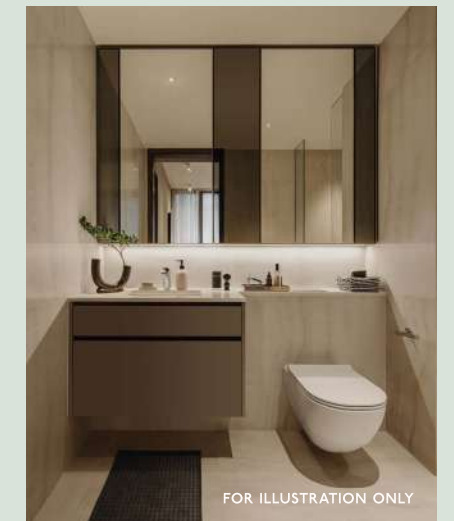
Signature Collection

The Signature Collection is poised to enchant your next chapter. Light, neutral tones accented with stone patterns and woodgrain finishes elicit natural warmth throughout the unit. With two to four bedrooms, the collection presents exciting singles pads and room for young families to blossom.

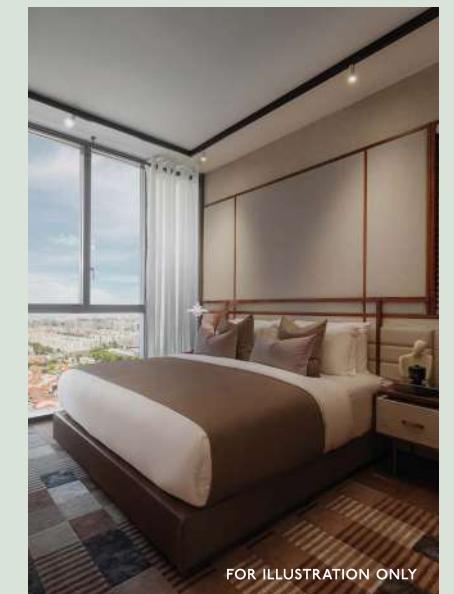
Each unit is conscientiously planned and efficiently designed with thoughtful integrations to amplify space. The master bedroom features a floor-to-ceiling wardrobe with a full-height mirror and side panel dresser built in for maximum storage.

Everyone dreams in comfort, as all rooms can accommodate at least a queen bed while the master bedroom fits a king. Meanwhile, storage spaces are well designed with ledges on the swing doors to help keep your home clutter-free.

For more possibilities, choose a Signature Premier unit with either a bigger foyer or a dry kitchen.



FOR ILLUSTRATION ONLY



FOR ILLUSTRATION ONLY



FOR ILLUSTRATION ONLY





FOR ILLUSTRATION ONLY



FOR ILLUSTRATION ONLY

Prestige Collection

Your grand arrival experience continues with the Prestige Collection's exclusive private lift lobby. For you, this is where privacy and comfort begin. A taste before you are whisked to the pinnacle of luxurious living at The Continuum.

Three, four and five-bedroom apartments await to soak in the exuberance of multigenerational families and surround you with quiet sophistication all at once. Take your time to appreciate the collection's spatial generosity, carefully complemented with features of the finest natural stone, marble and craftsmanship.

Spacious walk-in wardrobes in the four and five-bedroom homes feature pull-out and side dressers for all your everyday needs. The indulgence continues in the bathroom with a soul-soothing rain shower and full-length bath.

“Imagine a place where two souls meet, a space where functionality and conviviality blend seamlessly together to create the perfect environment for fine living. Provisions are carefully curated to reflect the unique personalities and tastes of the two individuals who call it home.”

– HILARY LOH, DESIGN DIRECTOR



FOR ILLUSTRATION ONLY



FOR ILLUSTRATION ONLY



FOR ILLUSTRATION ONLY



FOR ILLUSTRATION ONLY





FOR ILLUSTRATION ONLY



FOR ILLUSTRATION ONLY

Made with fine details

All apartments are generously furnished with select appliances and fixtures from esteemed makers at the peak of their craft.

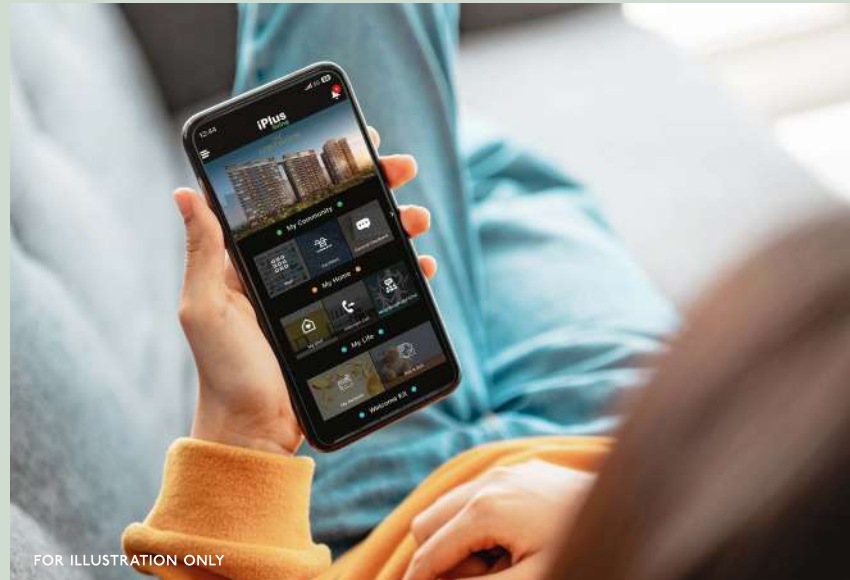
Fittings from V-Zug and Samsung elevate the kitchen along with your culinary and entertaining finesse and make clean-ups a breeze.

Laufen, Gessi and Tece pamper you in the bathroom, with selected units offering a full-length bath and a dual-basin vanity for five-star treatment.



Seamless living begins with smart simplicity

Welcome to urban living redefined with uncompromising sophistication and substance. The integrated smart system puts guest access, facility bookings, security and more at your fingertips so you don't miss a thing.



FOR ILLUSTRATION ONLY



SMART DOORBELL

Answer the door with your phone through a mobile app that lets you see and talk to visitors.



SMART LOCK

Enhance accessibility for loved ones by presetting five different ways to lock or unlock the door.



SMART AIRCON

Return to a home that truly relaxes you by remotely cooling your living room and master bedroom.



SMART GATEWAY

Have devices at your fingertips, with motion detection for added security.



SMART PARCEL

Deliveries never interrupt your flow. Send them to the parcel box and collect at your own time.



SMART BOOKING

Go from one pursuit to another seamlessly with a mobile app that lets you book facilities easily.



SMART LIFESTYLE

Flow between home, work and play with instant bookings and special deals tailored for you.



SMART INVITE

Managing guest lists is a breeze with quick-access QR and PIN codes to your gathering.



FOR ILLUSTRATION ONLY

Redefining forever homes with green standards

Sustainability flows through the property's DNA. Designed with solar panels and passive design features along with energy-efficient appliances and fixtures, The Continuum is a home that cares for the future it was built for.



SUSTAINABILITY DRIVE

EV chargers conveniently located in the carpark let EV and hybrid car owners stay on course for a greener future seamlessly.



THERMAL COMFORT

Ceiling fan in either the living room or bedrooms make it a breeze to cool your home with minimal use of air-conditioning.



SOLAR SUPPLEMENTED

Solar panels power common areas to ease energy consumption from the grid, which equates to savings for the development.



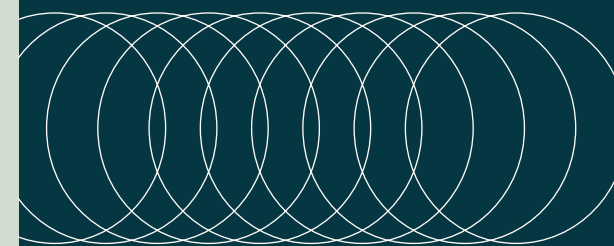
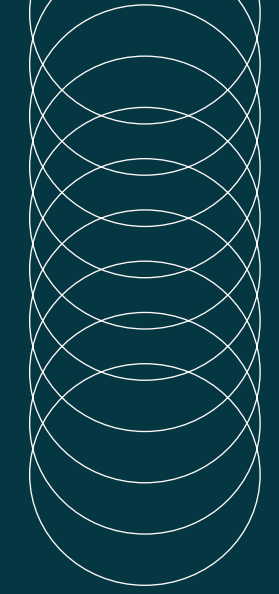
CERTIFIED SAFE

Appliances and fittings meet the Singapore Green Building Council standard and are low in Volatile Organic Compounds to keep your family healthy.



E-WASTE EASE

e-Waste bins offer a safe and convenient way to dispose of unwanted electronic devices. There is also a recyclables chute on every floor.



North Continuum

SIGNATURE COLLECTION

1 BEDROOM + STUDY

A A, A-G

2 BEDROOM

BI BI, BI-G, BI-PH

B2 B2, B2-G

2 BEDROOM + STUDY

B3-G B3-G

B4 B4, B4-G

3 BEDROOM

C1 C1, C1-G, C1-PH

C2 C2, C2-G, C2-PH

C3 C3, C3-PH

3 BEDROOM PREMIER

C4 C4, C4-G, C4-PH

C5 C5, C5-G, C5-PH

C6 C6, C6-G, C6-PH

C7 C7, C7-G, C7-PH

4 BEDROOM

D1 D1, D1-G, D1-PH

D2 D2, D2-G, D2-PH

D3 D3, D3-G, D3-PH

PRESTIGE COLLECTION

3 BEDROOM + STUDY

C8 C8, C8-G, C8-PH

C9 C9, C9-G, C9-PH

4 BEDROOM PREMIER

D4 D4, D4-PH

5 BEDROOM

E E, E-PH

1 THIAM SIEW AVENUE (S436838)

	1	2	3	4	5	6	7	8	9
	SKY TERRACE								
18	B2	C4-PH	D3-PH	A	B4	B4	C7-PH	C3-PH	B2
17	B2	C4	D3	A	B4	B4	C7	C3	B2
16	B2	C4	D3	A	B4	B4	C7	C3	B2
15	B2	C4	D3	A	B4	B4	C7	C3	B2
14	B2	C4	D3	A	B4	B4	C7	C3	B2
13	B2	C4	D3	A	B4	B4	C7	C3	B2
12	B2	C4	D3	A	B4	B4	C7	C3	B2
11	B2	C4	D3	A	B4	B4	C7	C3	B2
10	B2	C4	D3	A	B4	B4	C7	C3	B2
9	B2	C4	D3	A	B4	B4	C7	C3	B2
8	B2	C4	D3	A	B4	B4	C7	C3	B2
7	B2	C4	D3	A	B4	B4	C7	C3	B2
6	B2	C4	D3	A	B4	B4	C7	C3	B2
5	B2	C4	D3	A	B4	B4	C7	C3	B2
4	B2	C4	D3	A	B4	B4	C7	C3	B2
3	B2	C4	D3	A	B4	B4	C7	C3	B2
2	B2	C4	D3	A	B4	B4	C7	C3	B2
1	B2-G	C4-G	D3-G	A-G	B4-G	B3-G	C7-G		

3 THIAM SIEW AVENUE (S436841)

	10	11	12	13	14	15	16	17	18
	SKY TERRACE								
18	B2	C4-PH	D2-PH	A	B4	B4	C5-PH	C2-PH	B2
17	B2	C4	D2	A	B4	B4	C5	C2	B2
16	B2	C4	D2	A	B4	B4	C5	C2	B2
15	B2	C4	D2	A	B4	B4	C5	C2	B2
14	B2	C4	D2	A	B4	B4	C5	C2	B2
13	B2	C4	D2	A	B4	B4	C5	C2	B2
12	B2	C4	D2	A	B4	B4	C5	C2	B2
11	B2	C4	D2	A	B4	B4	C5	C2	B2
10	B2	C4	D2	A	B4	B4	C5	C2	B2
9	B2	C4	D2	A	B4	B4	C5	C2	B2
8	B2	C4	D2	A	B4	B4	C5	C2	B2
7	B2	C4	D2	A	B4	B4	C5	C2	B2
6	B2	C4	D2	A	B4	B4	C5	C2	B2
5	B2	C4	D2	A	B4	B4	C5	C2	B2
4	B2	C4	D2	A	B4	B4	C5	C2	B2
3	B2	C4	D2	A	B4	B4	C5	C2	B2
2	B2	C4	D2	A	B4	B4	C5	C2	B2
1	B2-G	C4-G	D2-G	A-G	B4-G	B3-G	C5-G	C2-G	B2-G

5 THIAM SIEW AVENUE (S436843)

	19	20	21	22	23	24
18	E-PH	C9-PH	BI-PH	C8-PH	D4-PH	CI-PH
17	E	C9	BI	C8	D4	CI
16	E	C9	BI	C8	D4	CI
15	E	C9	BI	C8	D4	CI
14	E	C9	BI	C8	D4	CI
13	E	C9	BI	C8	D4	CI
12	E	C9	BI	C8	D4	CI
11	E	C9	BI	C8	D4	CI
10	E	C9	BI	C8	D4	CI
9	E	C9	BI	C8	D4	CI
8	E	C9	BI	C8	D4	CI
7	E	C9	BI	C8	D4	CI
6	E	C9	BI	C8	D4	CI
5	E	C9	BI	C8	D4	CI
4	E	C9	BI	C8	D4	CI
3	E	C9	BI	C8	D4	CI
2		C9	BI	C8		CI
1		C9-G	BI-G	C8-G		CI-G

South Continuum

2 THIAM SIEW AVENUE (S436839)

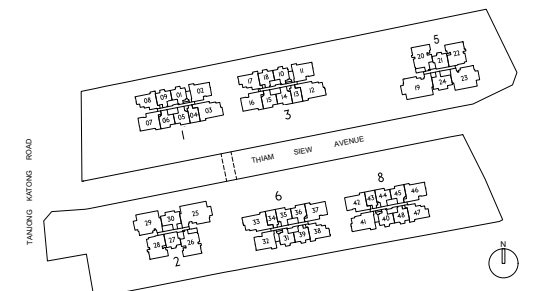
	25	26	27	28	29	30
18	E-PH	C9-PH	BI-PH	C8-PH	D4-PH	CI-PH
17	E	C9	BI	C8	D4	CI
16	E	C9	BI	C8	D4	CI
15	E	C9	BI	C8	D4	CI
14	E	C9	BI	C8	D4	CI
13	E	C9	BI	C8	D4	CI
12	E	C9	BI	C8	D4	CI
11	E	C9	BI	C8	D4	CI
10	E	C9	BI	C8	D4	CI
9	E	C9	BI	C8	D4	CI
8	E	C9	BI	C8	D4	CI
7	E	C9	BI	C8	D4	CI
6	E	C9	BI	C8	D4	CI
5	E	C9	BI	C8	D4	CI
4	E	C9	BI	C8	D4	CI
3	E	C9	BI	C8	D4	CI
2		C9	BI	C8		CI
1		C9-G	BI-G	C8-G		CI-G

6 THIAM SIEW AVENUE (S436844)

	31	32	33	34	35	36	37	38	39
	SKY TERRACE								
18	B2	C4-PH	D2-PH	A	B4	B4	C5-PH	C2-PH	B2
17	B2	C4	D2	A	B4	B4	C5	C2	B2
16	B2	C4	D2	A	B4	B4	C5	C2	B2
15	B2	C4	D2	A	B4	B4	C5	C2	B2
14	B2	C4	D2	A	B4	B4	C5	C2	B2
13	B2	C4	D2	A	B4	B4	C5	C2	B2
12	B2	C4	D2	A	B4	B4	C5	C2	B2
11	B2	C4	D2	A	B4	B4	C5	C2	B2
10	B2	C4	D2	A	B4	B4	C5	C2	B2
9	B2	C4	D2	A	B4	B4	C5	C2	B2
8	B2	C4	D2	A	B4	B4	C5	C2	B2
7	B2	C4	D2	A	B4	B4	C5	C2	B2
6	B2	C4	D2	A	B4	B4	C5	C2	B2
5	B2	C4	D2	A	B4	B4	C5	C2	B2
4	B2	C4	D2	A	B4	B4	C5	C2	B2
3	B2	C4	D2	A	B4	B4	C5	C2	B2
2	B2	C4	D2	A	B4	B4	C5	C2	B2
1	B2-G	C4-G	D2-G	A-G	B4-G	B3-G	C5-G	C2-G	B2-G

8 THIAM SIEW AVENUE (S436846)

	40	41	42	43	44	45	46	47	48
	SKY TERRACE								
18	B2	DI-PH	C5-PH	A	B4	B4	C6-PH	C2-PH	B2
17	B2	DI	C5	A	B4	B4	C6	C2	B2
16	B2	DI	C5	A	B4	B4	C6	C2	B2
15	B2	DI	C5	A	B4	B4	C6	C2	B2
14	B2	DI	C5	A	B4	B4	C6	C2	B2
13	B2	DI	C5	A	B4	B4	C6	C2	B2
12	B2	DI	C5	A	B4	B4	C6	C2	B2
11	B2	DI	C5	A	B4	B4	C6	C2	B2
10	B2	DI	C5	A	B4	B4	C6	C2	B2
9	B2	DI	C5	A	B4	B4	C6	C2	B2
8	B2	DI	C5	A	B4	B4	C6	C2	B2
7	B2	DI	C5	A	B4	B4	C6	C2	B2
6	B2	DI	C5	A	B4	B4	C6	C2	B2
5	B2	DI	C5	A	B4	B4	C6	C2	B2
4	B2	DI	C5	A	B4	B4	C6	C2	B2
3	B2	DI	C5	A	B4	B4	C6	C2	B2
2	B2	DI	C5	A	B4	B4	C6	C2	B2
1	B2-G	DI-G	C5-G	A-G	B4-G	B3-G	C6-G		



Type A

1 BEDROOM + STUDY

Type A-G

52 m² / 560 ft²

Inclusive of 5 m² PES & 3 m² AC Ledge

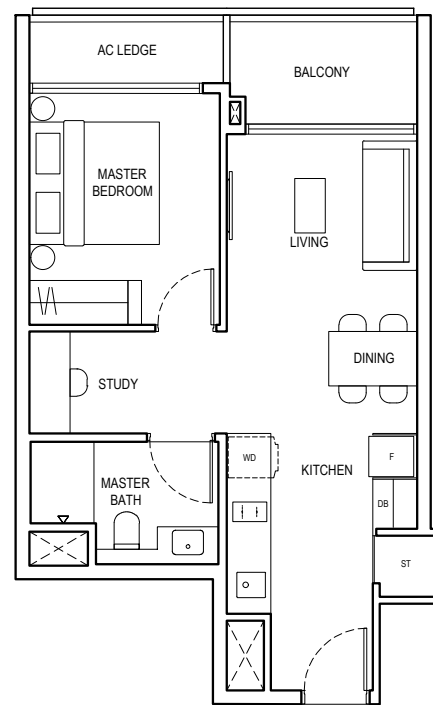
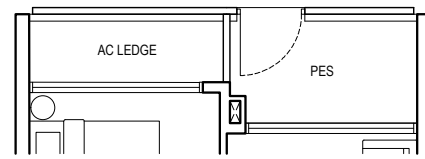
- BLOCK 1** #01-04
- BLOCK 3** #01-13
- BLOCK 6** #01-34
- BLOCK 8** #01-43

Type A

52 m² / 560 ft²

Inclusive of 5 m² Balcony & 3 m² AC Ledge

- BLOCK 1** #02-04 to #17-04
- BLOCK 3** #02-13 to #17-13
- BLOCK 6** #02-34 to #17-34
- BLOCK 8** #02-43 to #17-43

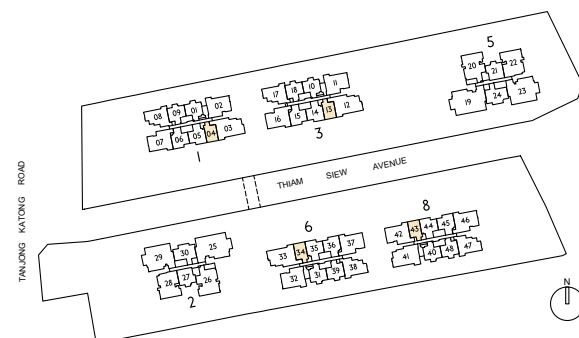


LEGEND

PES	PRIVATE ENCLOSED SPACE	AC	AIR-CONDITIONER
DB	DISTRIBUTION BOARD	ST	STORE I
F	FRIDGE	RC	REINFORCED CONCRETE (EXCLUDED FROM STRATA AREA)
WD	WASHER DRYER COMBO	⊞	VOID SPACE (EXCLUDED FROM STRATA AREA)



ALL PLANS ARE SUBJECT TO CHANGES BY THE RELEVANT AUTHORITIES. MEASUREMENTS ARE APPROXIMATE ONLY AND SUBJECT TO FINAL SURVEY. INFORMATION ACCURATE AT POINT OF PRINTING. BP APPROVAL NO.: A1716-00010-2021-BP01 DATED 24/03/2023



Type B1

2 BEDROOM

Type B1-G

60 m² / 646 ft²

Inclusive of 5 m² PES & 4 m² AC Ledge

- BLOCK 2** #01-27
- BLOCK 5** #01-21

Type B1

60 m² / 646 ft²

Inclusive of 5 m² Balcony & 3 m² AC Ledge

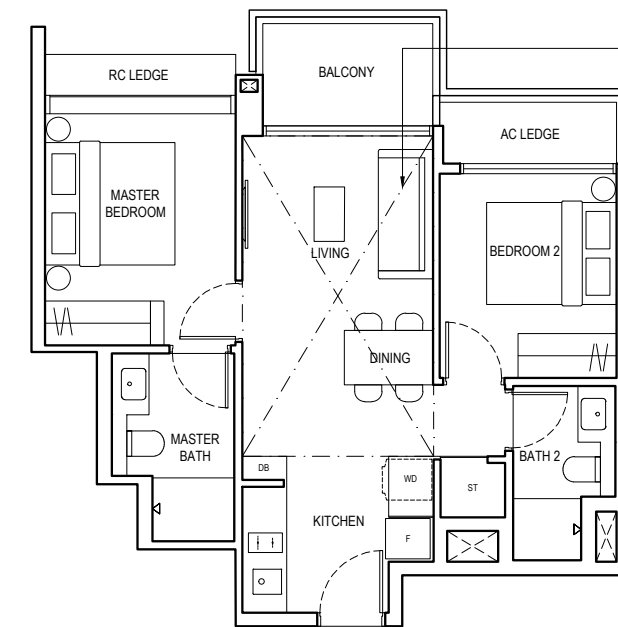
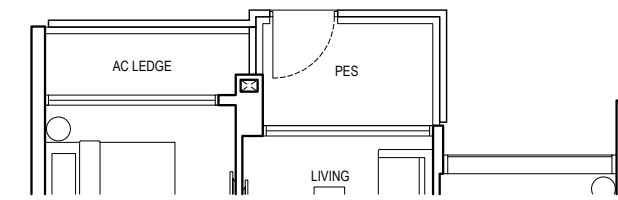
- BLOCK 2** #02-27 to #17-27
- BLOCK 5** #02-21 to #17-21

Type B1-PH

75 m² / 807 ft²

Inclusive of 15 m² Strata Void, 5 m² Balcony & 3 m² AC Ledge

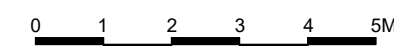
- BLOCK 2** #18-27
- BLOCK 5** #18-21



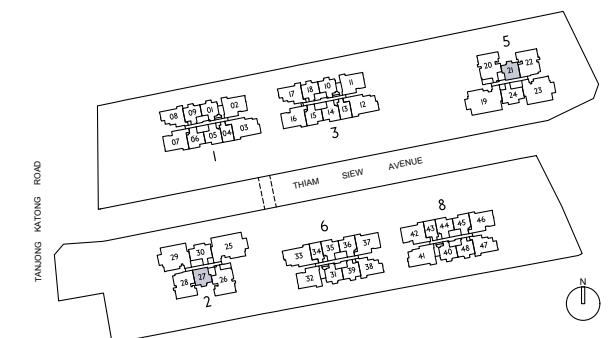
DOTTED LINE DENOTES STRATA VOID COMPLETE WITH BULKHEAD AT TYPE B1-PH

LEGEND

PES	PRIVATE ENCLOSED SPACE	AC	AIR-CONDITIONER
DB	DISTRIBUTION BOARD	ST	STORE I
F	FRIDGE	RC	REINFORCED CONCRETE (EXCLUDED FROM STRATA AREA)
WD	WASHER DRYER COMBO	⊞	VOID SPACE (EXCLUDED FROM STRATA AREA)



ALL PLANS ARE SUBJECT TO CHANGES BY THE RELEVANT AUTHORITIES. MEASUREMENTS ARE APPROXIMATE ONLY AND SUBJECT TO FINAL SURVEY. INFORMATION ACCURATE AT POINT OF PRINTING. BP APPROVAL NO.: A1716-00010-2021-BP01 DATED 24/03/2023



Type B2

2 BEDROOM

Type B2-G

62 m² / 667 ft²

Inclusive of 5 m² PES & 3 m² AC Ledge

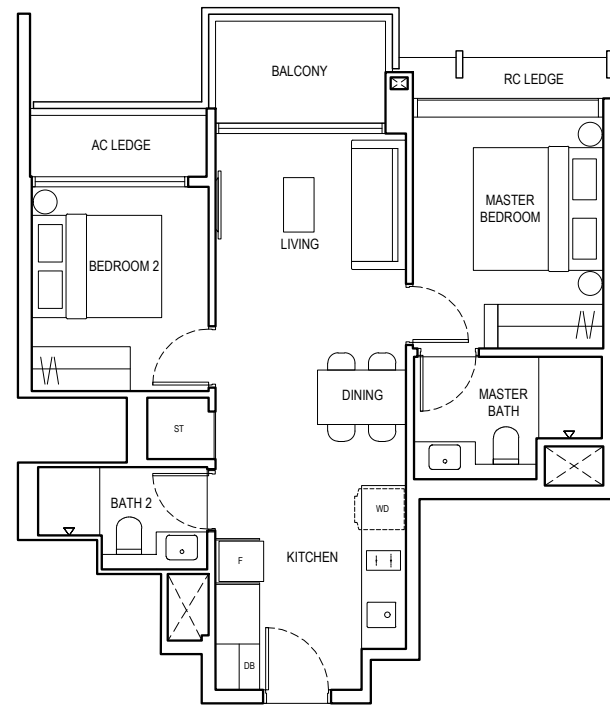
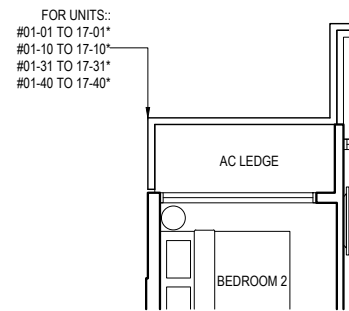
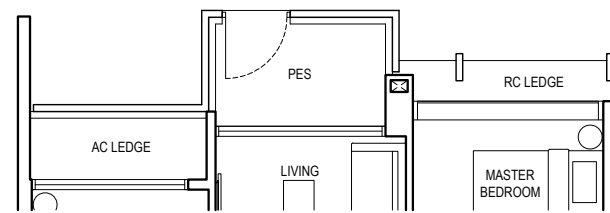
- BLOCK 1** #01-01*
- BLOCK 3** #01-10*
- BLOCK 3** #01-18
- BLOCK 6** #01-31*
- BLOCK 6** #01-39
- BLOCK 8** #01-40*

Type B2

62 m² / 667 ft²

Inclusive of 5 m² Balcony & 3 m² AC Ledge

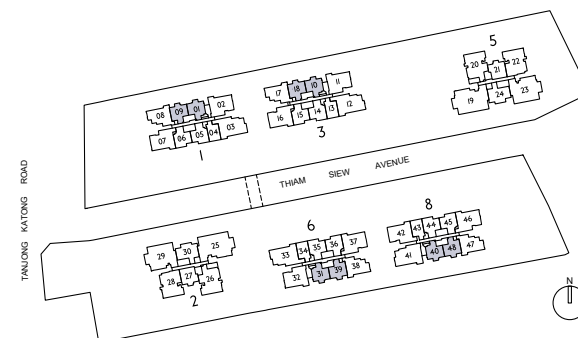
- BLOCK 1** #02-01* to #17-01*
- BLOCK 1** #02-09 to #17-09
- BLOCK 3** #02-10* to #17-10*
- BLOCK 3** #02-18 to #17-18
- BLOCK 6** #02-31* to #17-31*
- BLOCK 6** #02-39 to #17-39
- BLOCK 8** #02-40* to #17-40*
- BLOCK 8** #02-48 to #17-48



- LEGEND**
- | | | | |
|-----|------------------------|----|---|
| PES | PRIVATE ENCLOSED SPACE | ST | STORE 1 |
| DB | DISTRIBUTION BOARD | RC | REINFORCED CONCRETE (EXCLUDED FROM STRATA AREA) |
| F | FRIDGE | | VOID SPACE (EXCLUDED FROM STRATA AREA) |
| WD | WASHER DRYER COMBO | * | MIRRORED UNIT |
| AC | AIR-CONDITIONER | | |



ALL PLANS ARE SUBJECT TO CHANGES BY THE RELEVANT AUTHORITIES. MEASUREMENTS ARE APPROXIMATE ONLY AND SUBJECT TO FINAL SURVEY. INFORMATION ACCURATE AT POINT OF PRINTING. BP APPROVAL NO.: A1716-00010-2021-BP01 DATED 24/03/2023



Type B3

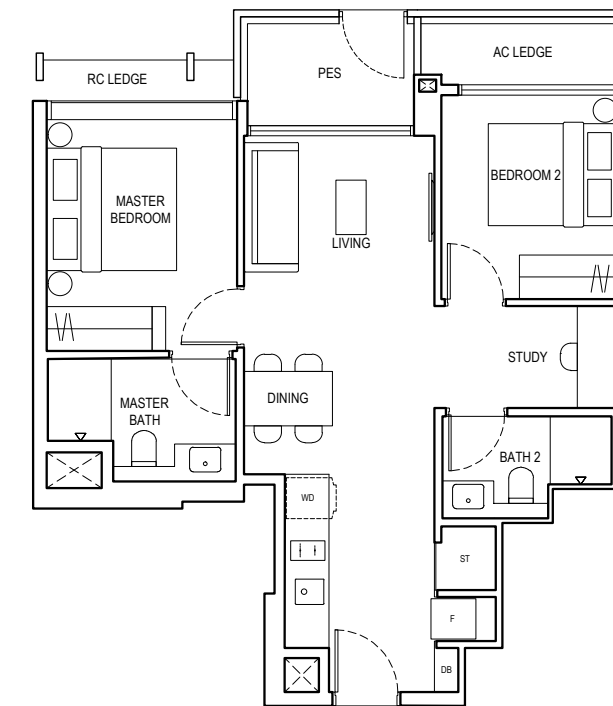
2 BEDROOM + STUDY

Type B3-G

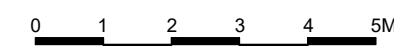
65 m² / 700 ft²

Inclusive of 5 m² PES & 3 m² AC Ledge

- BLOCK 1** #01-06
- BLOCK 3** #01-15
- BLOCK 6** #01-36
- BLOCK 8** #01-45



- LEGEND**
- | | | | |
|-----|------------------------|----|---|
| PES | PRIVATE ENCLOSED SPACE | AC | AIR-CONDITIONER |
| DB | DISTRIBUTION BOARD | ST | STORE 1 |
| F | FRIDGE | RC | REINFORCED CONCRETE (EXCLUDED FROM STRATA AREA) |
| WD | WASHER DRYER COMBO | | VOID SPACE (EXCLUDED FROM STRATA AREA) |



ALL PLANS ARE SUBJECT TO CHANGES BY THE RELEVANT AUTHORITIES. MEASUREMENTS ARE APPROXIMATE ONLY AND SUBJECT TO FINAL SURVEY. INFORMATION ACCURATE AT POINT OF PRINTING. BP APPROVAL NO.: A1716-00010-2021-BP01 DATED 24/03/2023



Type B4

2 BEDROOM + STUDY

Type B4-G

67 m² / 721 ft²

Inclusive of 5 m² PES & 3 m² AC Ledge

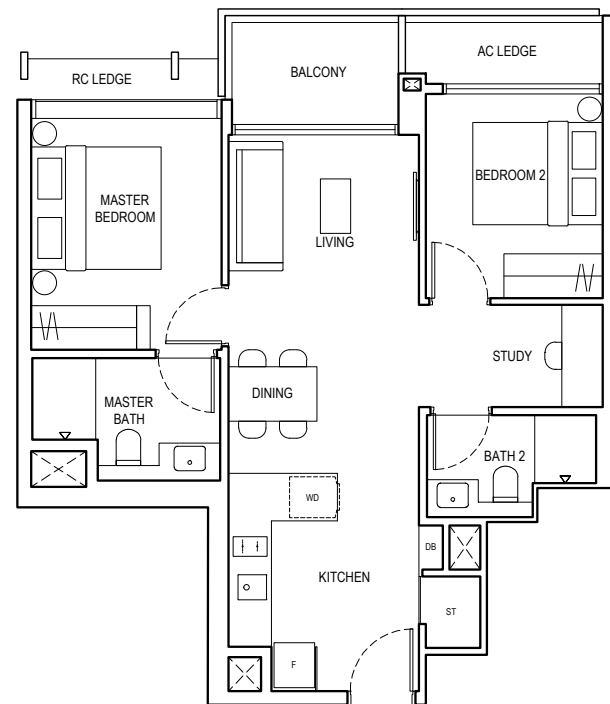
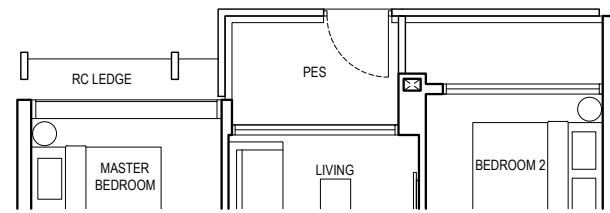
- BLOCK 1** #01-05*
- BLOCK 3** #01-14*
- BLOCK 6** #01-35*
- BLOCK 8** #01-44*

Type B4

67 m² / 721 ft²

Inclusive of 5 m² Balcony & 3 m² AC Ledge

- BLOCK 1** #02-05* to #17-05*
- BLOCK 1** #02-06 to #17-06
- BLOCK 3** #02-14* to #17-14*
- BLOCK 3** #02-15 to #17-15
- BLOCK 6** #02-35* to #17-35*
- BLOCK 6** #02-36 to #17-36
- BLOCK 8** #02-44* to #17-44*
- BLOCK 8** #02-45 to #17-45

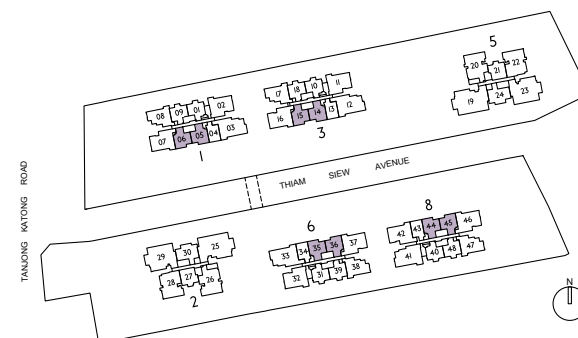


LEGEND

- | | | | |
|-----|------------------------|----|---|
| PES | PRIVATE ENCLOSED SPACE | ST | STORE I |
| DB | DISTRIBUTION BOARD | RC | REINFORCED CONCRETE (EXCLUDED FROM STRATA AREA) |
| F | FRIDGE | | VOID SPACE (EXCLUDED FROM STRATA AREA) |
| WD | WASHER DRYER COMBO | * | MIRRORED UNIT |
| AC | AIR-CONDITIONER | | |



ALL PLANS ARE SUBJECT TO CHANGES BY THE RELEVANT AUTHORITIES. MEASUREMENTS ARE APPROXIMATE ONLY AND SUBJECT TO FINAL SURVEY. INFORMATION ACCURATE AT POINT OF PRINTING. BP APPROVAL NO.: A1716-00010-2021-BP01 DATED 24/03/2023



Type C1

3 BEDROOM

Type C1-G

81 m² / 872 ft²

Inclusive of 5 m² PES & 5 m² AC Ledge

- BLOCK 2** #01-30
- BLOCK 5** #01-24

Type C1

81 m² / 872 ft²

Inclusive of 5 m² Balcony & 5 m² AC Ledge

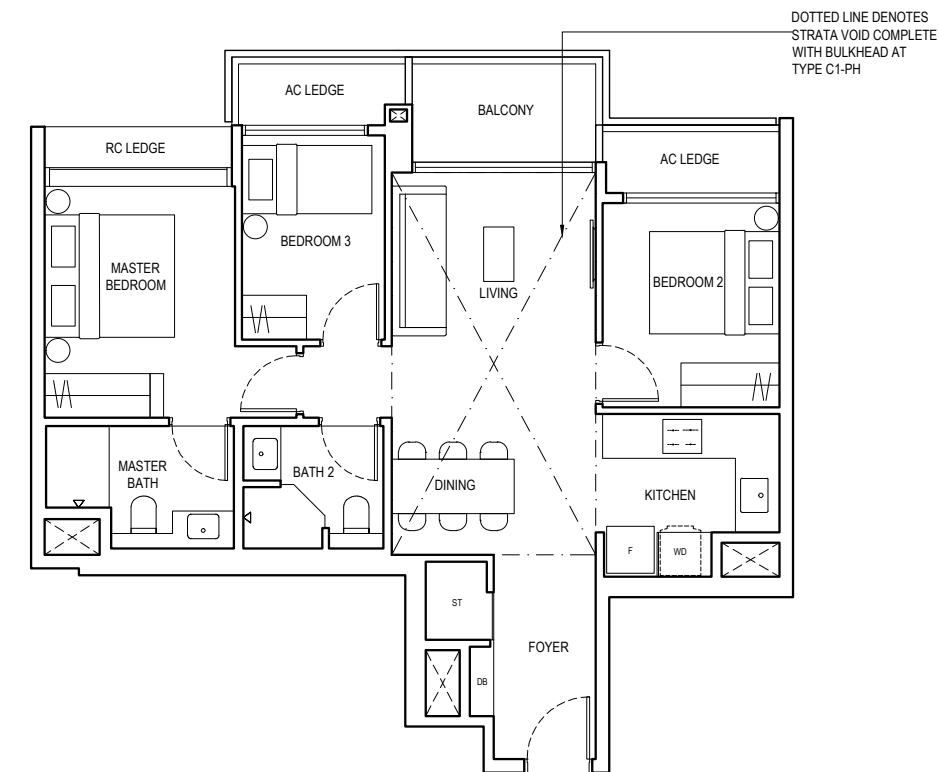
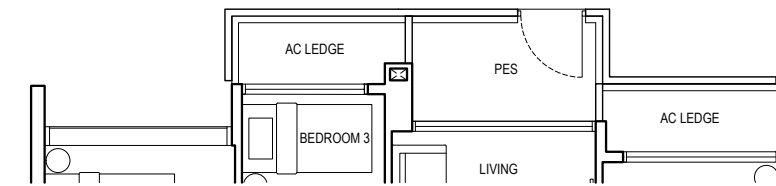
- BLOCK 2** #02-30 to #17-30
- BLOCK 5** #02-24 to #17-24

Type C1-PH

100 m² / 1076 ft²

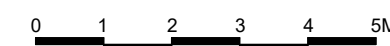
Inclusive of 19 m² Strata Void, 5 m² Balcony & 5 m² AC Ledge

- BLOCK 2** #18-30
- BLOCK 5** #18-24

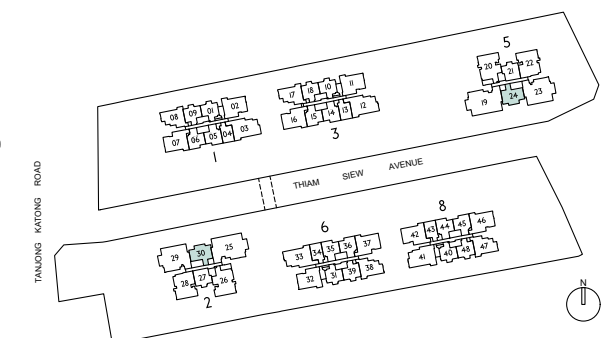


LEGEND

- | | | | |
|-----|------------------------|----|---|
| PES | PRIVATE ENCLOSED SPACE | AC | AIR-CONDITIONER |
| DB | DISTRIBUTION BOARD | ST | STORE I |
| F | FRIDGE | RC | REINFORCED CONCRETE (EXCLUDED FROM STRATA AREA) |
| WD | WASHER DRYER COMBO | | VOID SPACE (EXCLUDED FROM STRATA AREA) |



ALL PLANS ARE SUBJECT TO CHANGES BY THE RELEVANT AUTHORITIES. MEASUREMENTS ARE APPROXIMATE ONLY AND SUBJECT TO FINAL SURVEY. INFORMATION ACCURATE AT POINT OF PRINTING. BP APPROVAL NO.: A1716-00010-2021-BP01 DATED 24/03/2023



Type C2

3 BEDROOM

Type C2-G

88 m² / 947 ft²

Inclusive of 5 m² PES & 5 m² AC Ledge

BLOCK 3 #01-17
BLOCK 6 #01-38

Type C2

88 m² / 947 ft²

Inclusive of 5 m² Balcony & 5 m² AC Ledge

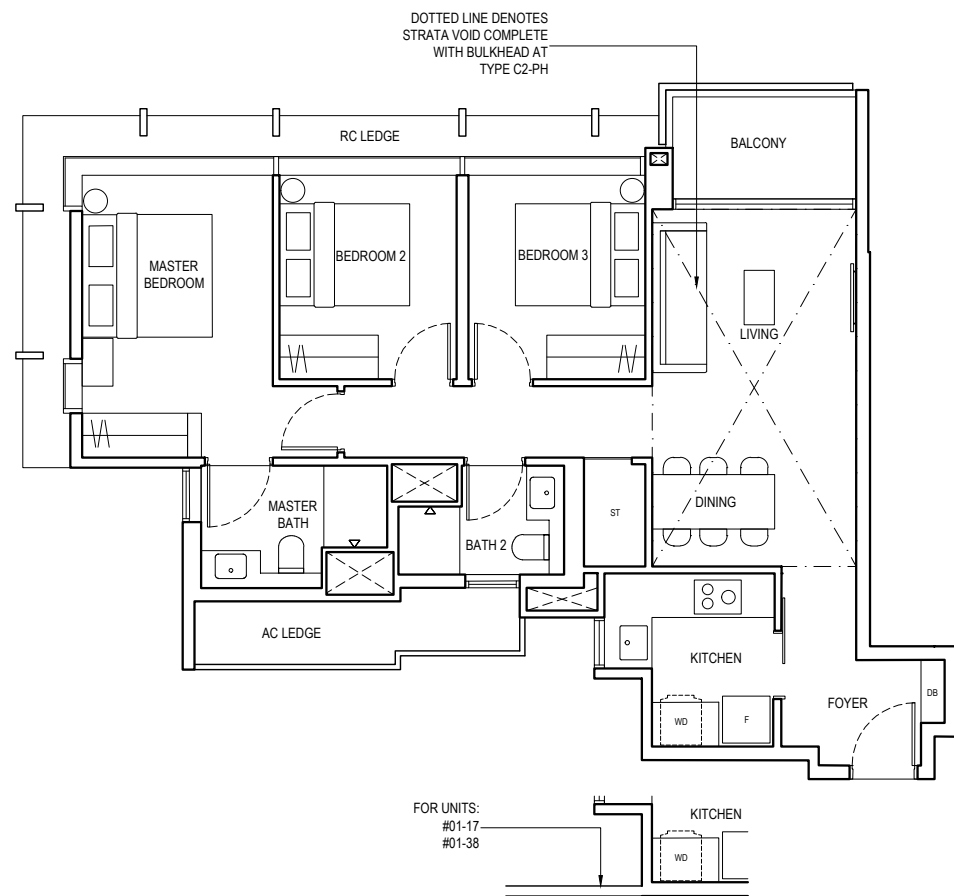
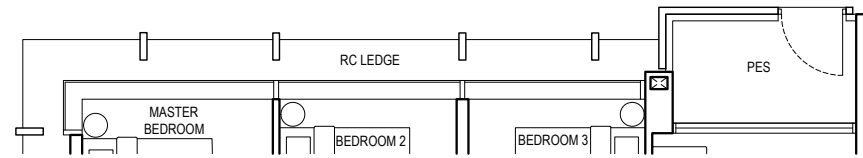
BLOCK 3 #02-17 to #16-17
BLOCK 6 #02-38 to #16-38
BLOCK 8 #02-47 to #16-47

Type C2-PH

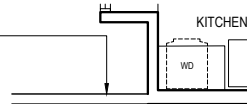
105 m² / 1130 ft²

Inclusive of 17 m² Strata Void, 5 m² Balcony & 5 m² AC Ledge

BLOCK 3 #17-17
BLOCK 6 #17-38
BLOCK 8 #17-47



FOR UNITS:
#01-17
#01-38

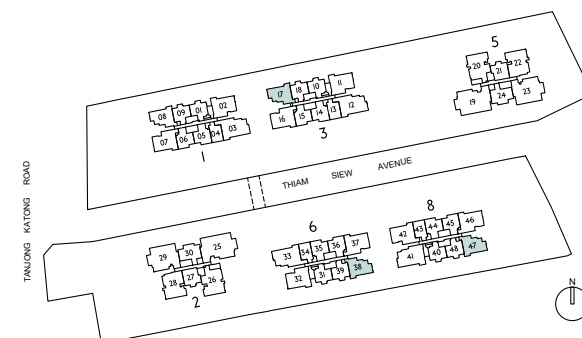


LEGEND

PES	PRIVATE ENCLOSED SPACE	AC	AIR-CONDITIONER
DB	DISTRIBUTION BOARD	ST	STORE 1
F	FRIDGE	RC	REINFORCED CONCRETE (EXCLUDED FROM STRATA AREA)
WD	WASHER DRYER COMBO	☐	VOID SPACE (EXCLUDED FROM STRATA AREA)



ALL PLANS ARE SUBJECT TO CHANGES BY THE RELEVANT AUTHORITIES. MEASUREMENTS ARE APPROXIMATE ONLY AND SUBJECT TO FINAL SURVEY. INFORMATION ACCURATE AT POINT OF PRINTING. BP APPROVAL NO.: A1716-00010-2021-BP01 DATED 24/03/2023



Type C3

3 BEDROOM

Type C3

88 m² / 947 ft²

Inclusive of 5 m² Balcony & 5 m² AC Ledge

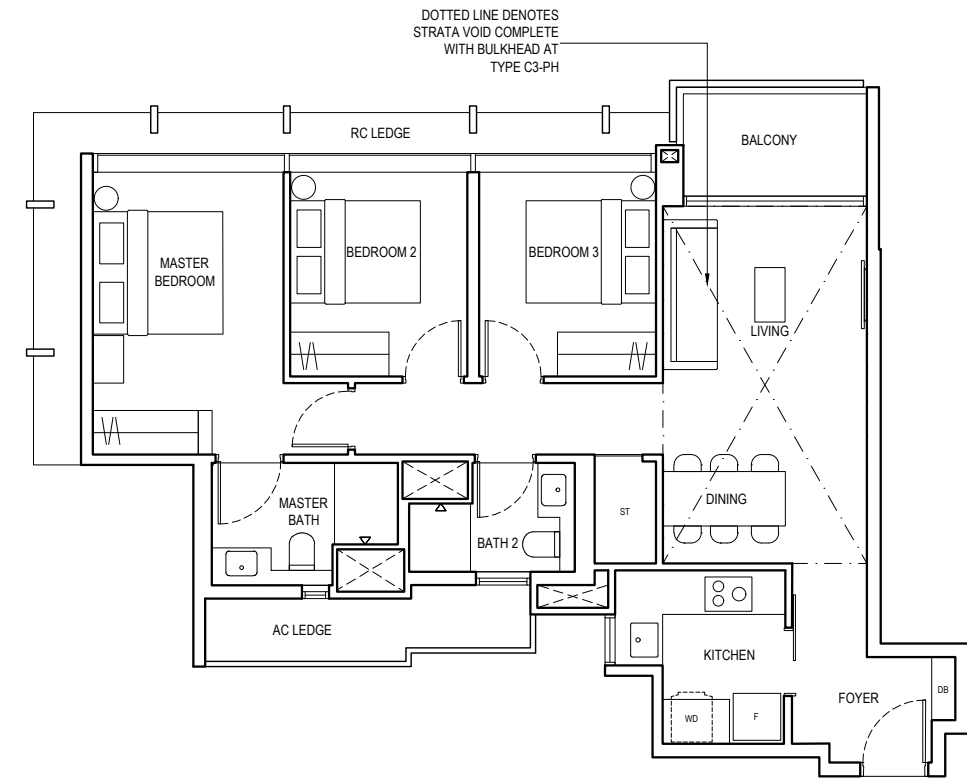
BLOCK 1 #02-08 to #16-08

Type C3-PH

106 m² / 1141 ft²

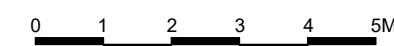
Inclusive of 18 m² Strata Void, 5 m² Balcony & 5 m² AC Ledge

BLOCK 1 #17-08

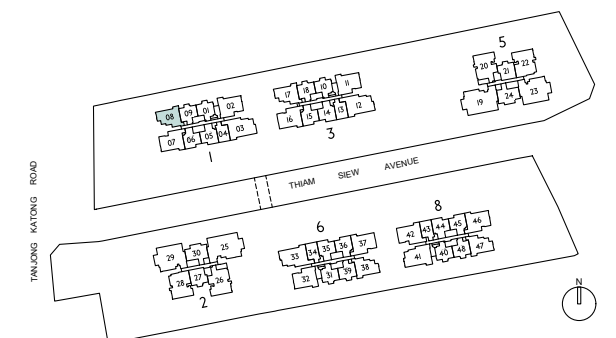


LEGEND

PES	PRIVATE ENCLOSED SPACE	AC	AIR-CONDITIONER
DB	DISTRIBUTION BOARD	ST	STORE 1
F	FRIDGE	RC	REINFORCED CONCRETE (EXCLUDED FROM STRATA AREA)
WD	WASHER DRYER COMBO	☐	VOID SPACE (EXCLUDED FROM STRATA AREA)



ALL PLANS ARE SUBJECT TO CHANGES BY THE RELEVANT AUTHORITIES. MEASUREMENTS ARE APPROXIMATE ONLY AND SUBJECT TO FINAL SURVEY. INFORMATION ACCURATE AT POINT OF PRINTING. BP APPROVAL NO.: A1716-00010-2021-BP01 DATED 24/03/2023



Type C4

3 BEDROOM PREMIER

Type C4-G

99 m² / 1066 ft²

Inclusive of 5 m² PES & 6 m² AC ledge

BLOCK 1 #01-02
BLOCK 3 #01-11
BLOCK 6 #01-32

Type C4

99 m² / 1066 ft²

Inclusive of 5 m² Balcony & 6 m² AC ledge

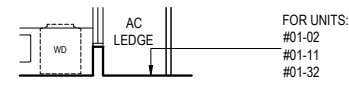
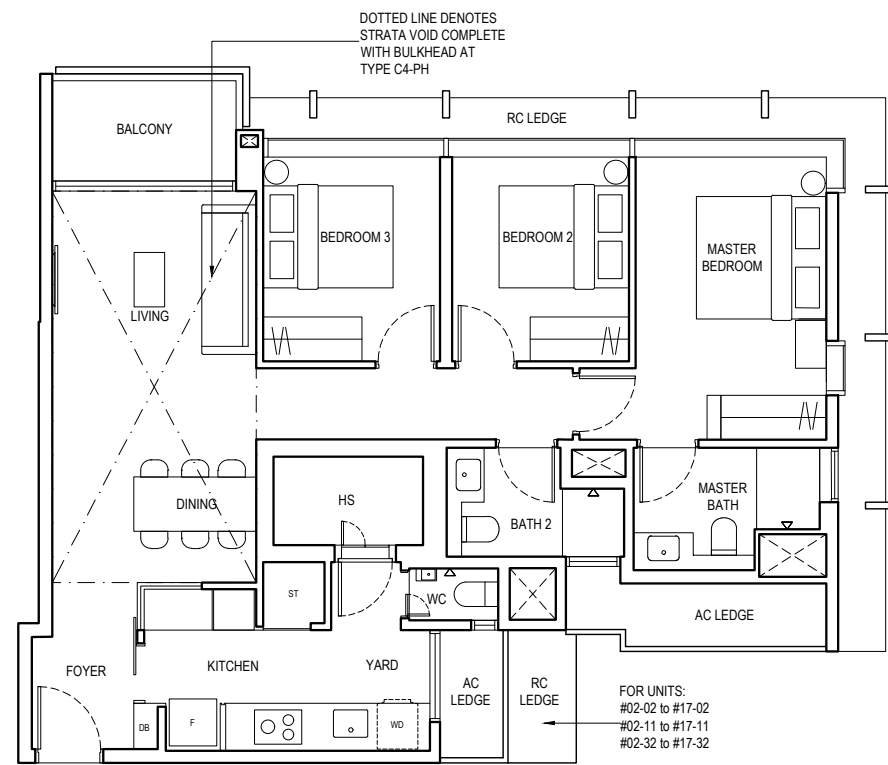
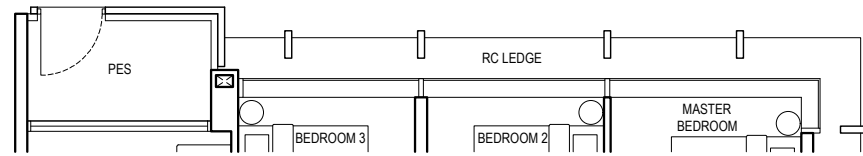
BLOCK 1 #02-02 to #16-02
BLOCK 3 #02-11 to #16-11
BLOCK 6 #02-32 to #16-32

Type C4-PH

119 m² / 1281 ft²

Inclusive of 20 m² Strata Void, 5 m² Balcony & 6 m² AC ledge

BLOCK 1 #17-02
BLOCK 3 #17-11
BLOCK 6 #17-32

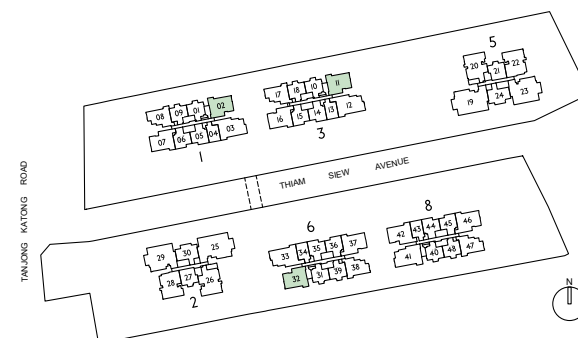


LEGEND

- | | | | |
|-----|------------------------|------|---|
| PES | PRIVATE ENCLOSED SPACE | ST | STORE I |
| DB | DISTRIBUTION BOARD | HS | HOUSEHOLD SHELTER |
| F | FRIDGE | WC | WATER CLOSET |
| WD | WASHER DRYER COMBO | RC | REINFORCED CONCRETE (EXCLUDED FROM STRATA AREA) |
| AC | AIR-CONDITIONER | VOID | VOID SPACE (EXCLUDED FROM STRATA AREA) |



ALL PLANS ARE SUBJECT TO CHANGES BY THE RELEVANT AUTHORITIES. MEASUREMENTS ARE APPROXIMATE ONLY AND SUBJECT TO FINAL SURVEY. INFORMATION ACCURATE AT POINT OF PRINTING. BP APPROVAL NO.: A1716-00010-2021-BP01 DATED 24/03/2023



Type C5

3 BEDROOM PREMIER

Type C5-G

101 m² / 1087 ft²

Inclusive of 5 m² PES & 6 m² AC ledge

BLOCK 3 #01-16
BLOCK 6 #01-37
BLOCK 8 #01-42*

Type C5

101 m² / 1087 ft²

Inclusive of 5 m² Balcony & 6 m² AC ledge

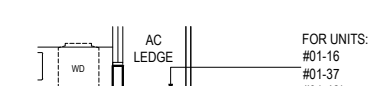
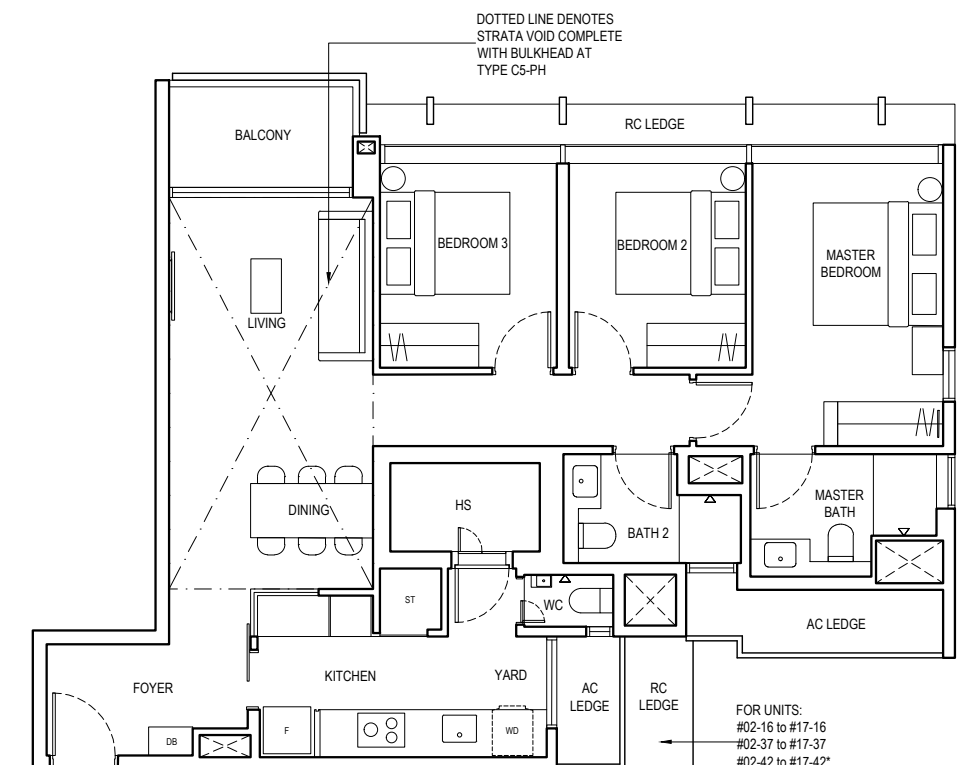
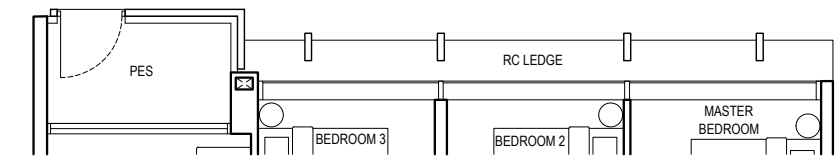
BLOCK 3 #02-16 to #16-16
BLOCK 6 #02-37 to #16-37
BLOCK 8 #02-42* to #16-42*

Type C5-PH

121 m² / 1302 ft²

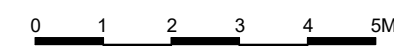
Inclusive of 20 m² Strata Void, 5 m² Balcony & 6 m² AC ledge

BLOCK 3 #17-16
BLOCK 6 #17-37
BLOCK 8 #17-42*

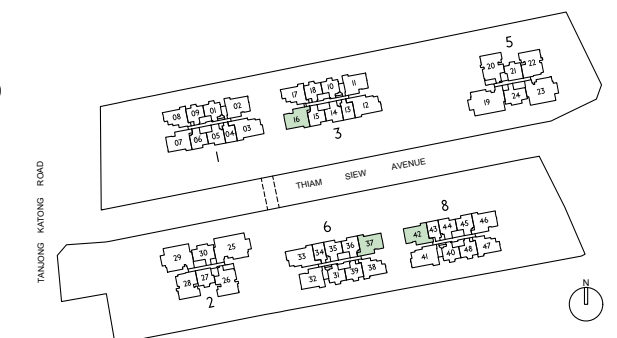


LEGEND

- | | | | |
|-----|------------------------|------|---|
| PES | PRIVATE ENCLOSED SPACE | HS | HOUSEHOLD SHELTER |
| DB | DISTRIBUTION BOARD | WC | WATER CLOSET |
| F | FRIDGE | RC | REINFORCED CONCRETE (EXCLUDED FROM STRATA AREA) |
| WD | WASHER DRYER COMBO | VOID | VOID SPACE (EXCLUDED FROM STRATA AREA) |
| AC | AIR-CONDITIONER | * | MIRRORED UNIT |
| ST | STORE I | | |



ALL PLANS ARE SUBJECT TO CHANGES BY THE RELEVANT AUTHORITIES. MEASUREMENTS ARE APPROXIMATE ONLY AND SUBJECT TO FINAL SURVEY. INFORMATION ACCURATE AT POINT OF PRINTING. BP APPROVAL NO.: A1716-00010-2021-BP01 DATED 24/03/2023



Type C6

3 BEDROOM PREMIER

Type C6-G

101 m² / 1087 ft²

Inclusive of 5 m² PES & 6 m² AC Ledge

BLOCK 8 #01-46

Type C6

101 m² / 1087 ft²

Inclusive of 5 m² Balcony & 6 m² AC Ledge

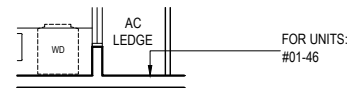
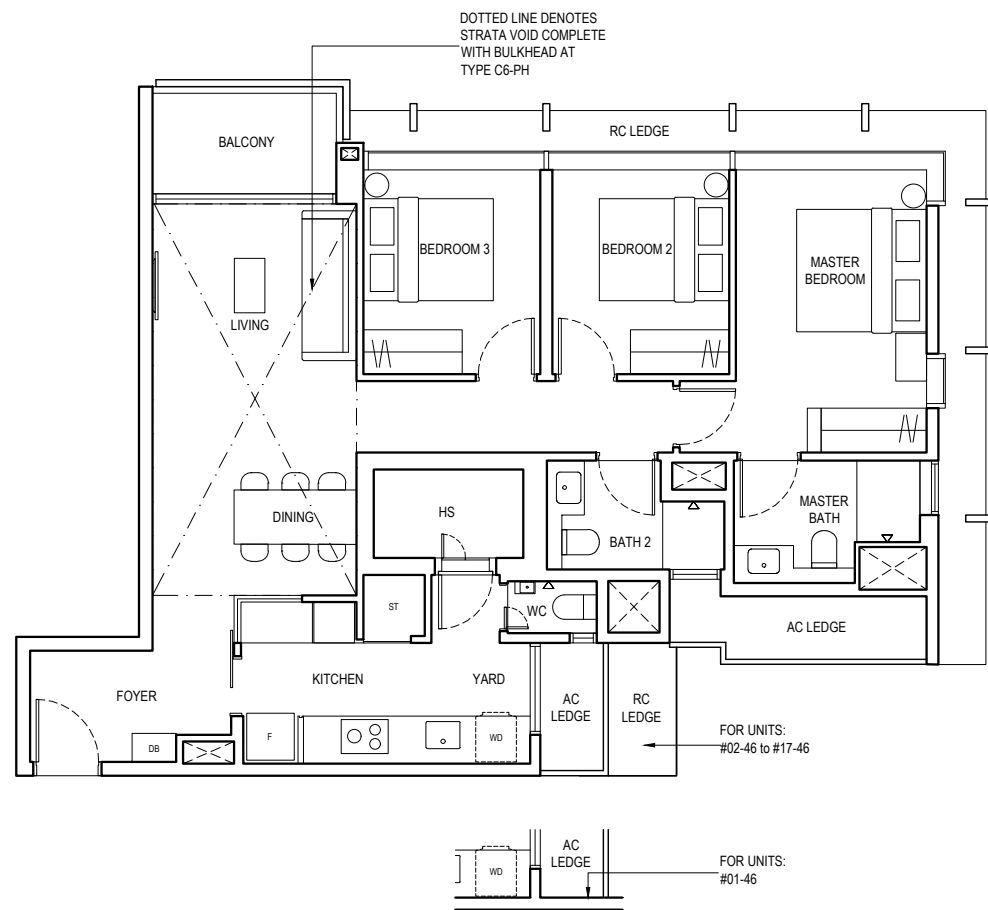
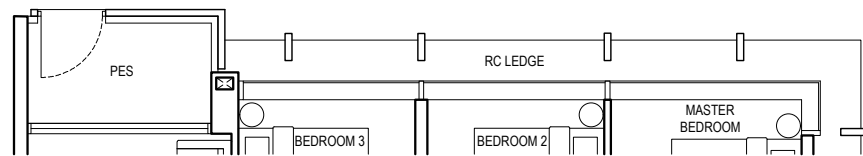
BLOCK 8 #02-46 to #16-46

Type C6-PH

121 m² / 1302 ft²

Inclusive of 20 m² Strata Void, 5 m² Balcony & 6 m² AC Ledge

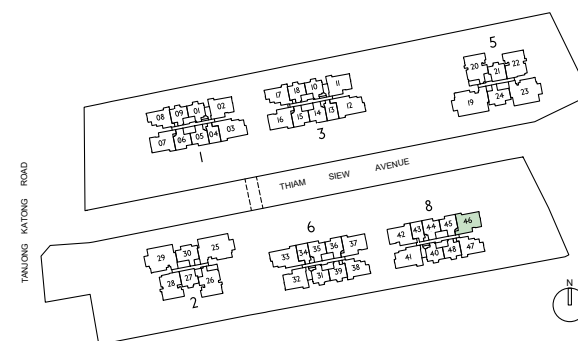
BLOCK 8 #17-46



- LEGEND**
- | | |
|----------------------------|--|
| PES PRIVATE ENCLOSED SPACE | HS HOUSEHOLD SHELTER |
| DB DISTRIBUTION BOARD | WC WATER CLOSET |
| F FRIDGE | RC REINFORCED CONCRETE (EXCLUDED FROM STRATA AREA) |
| WD WASHER DRYER COMBO | VOID SPACE (EXCLUDED FROM STRATA AREA) |
| AC AIR-CONDITIONER | * MIRRORED UNIT |
| ST STORE I | |



ALL PLANS ARE SUBJECT TO CHANGES BY THE RELEVANT AUTHORITIES. MEASUREMENTS ARE APPROXIMATE ONLY AND SUBJECT TO FINAL SURVEY. INFORMATION ACCURATE AT POINT OF PRINTING. BP APPROVAL NO.: A1716-00010-2021-BP01 DATED 24/03/2023



Type C7

3 BEDROOM PREMIER

Type C7-G

101 m² / 1087 ft²

Inclusive of 5 m² PES & 6 m² AC Ledge

BLOCK 1 #01-07

Type C7

101 m² / 1087 ft²

Inclusive of 5 m² Balcony & 6 m² AC Ledge

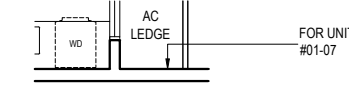
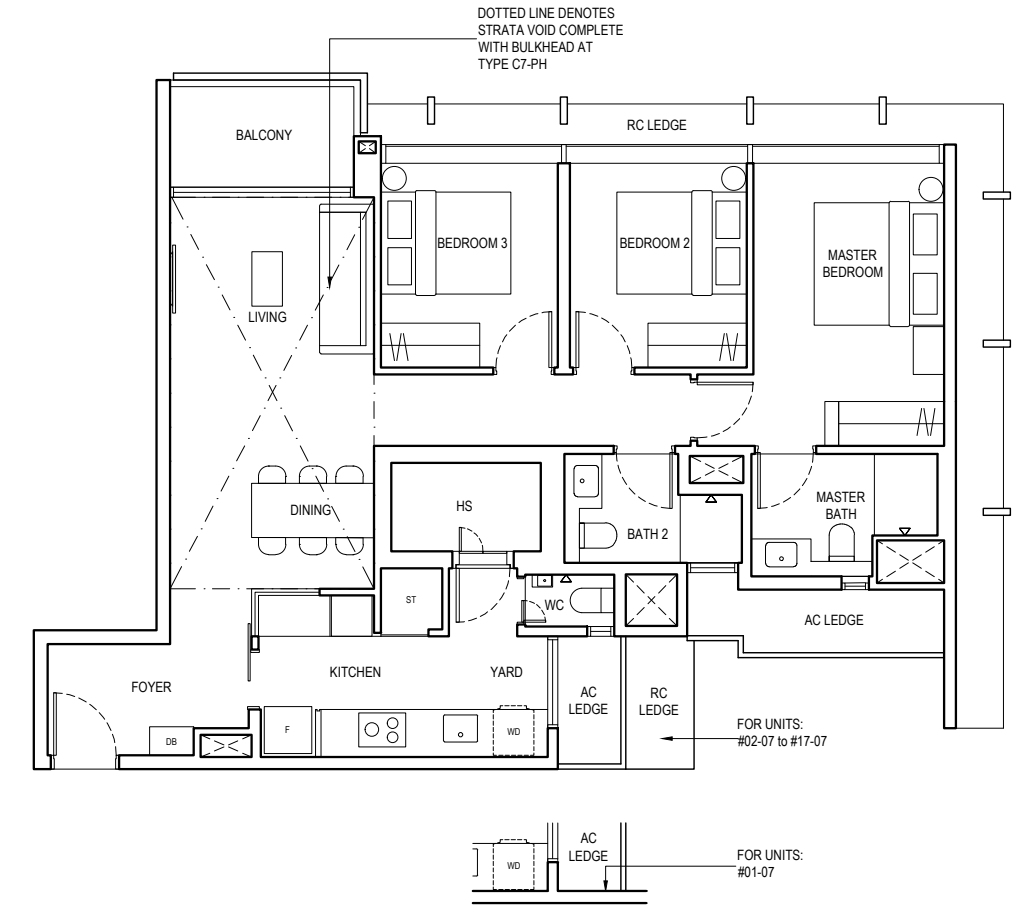
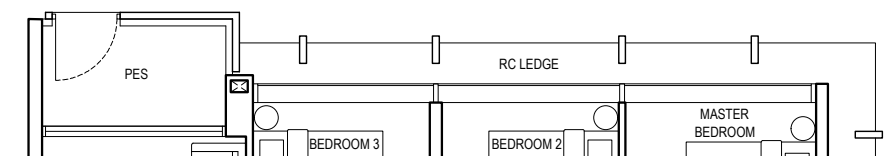
BLOCK 1 #02-07 to #16-07

Type C7-PH

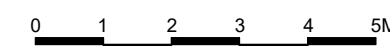
121 m² / 1302 ft²

Inclusive of 20 m² Strata Void, 5 m² Balcony & 6 m² AC Ledge

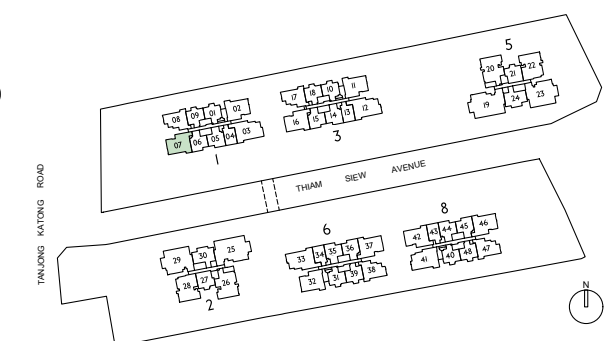
BLOCK 1 #17-07



- LEGEND**
- | | |
|----------------------------|--|
| PES PRIVATE ENCLOSED SPACE | HS HOUSEHOLD SHELTER |
| DB DISTRIBUTION BOARD | WC WATER CLOSET |
| F FRIDGE | RC REINFORCED CONCRETE (EXCLUDED FROM STRATA AREA) |
| WD WASHER DRYER COMBO | VOID SPACE (EXCLUDED FROM STRATA AREA) |
| AC AIR-CONDITIONER | * MIRRORED UNIT |
| ST STORE I | |



ALL PLANS ARE SUBJECT TO CHANGES BY THE RELEVANT AUTHORITIES. MEASUREMENTS ARE APPROXIMATE ONLY AND SUBJECT TO FINAL SURVEY. INFORMATION ACCURATE AT POINT OF PRINTING. BP APPROVAL NO.: A1716-00010-2021-BP01 DATED 24/03/2023



Type C8

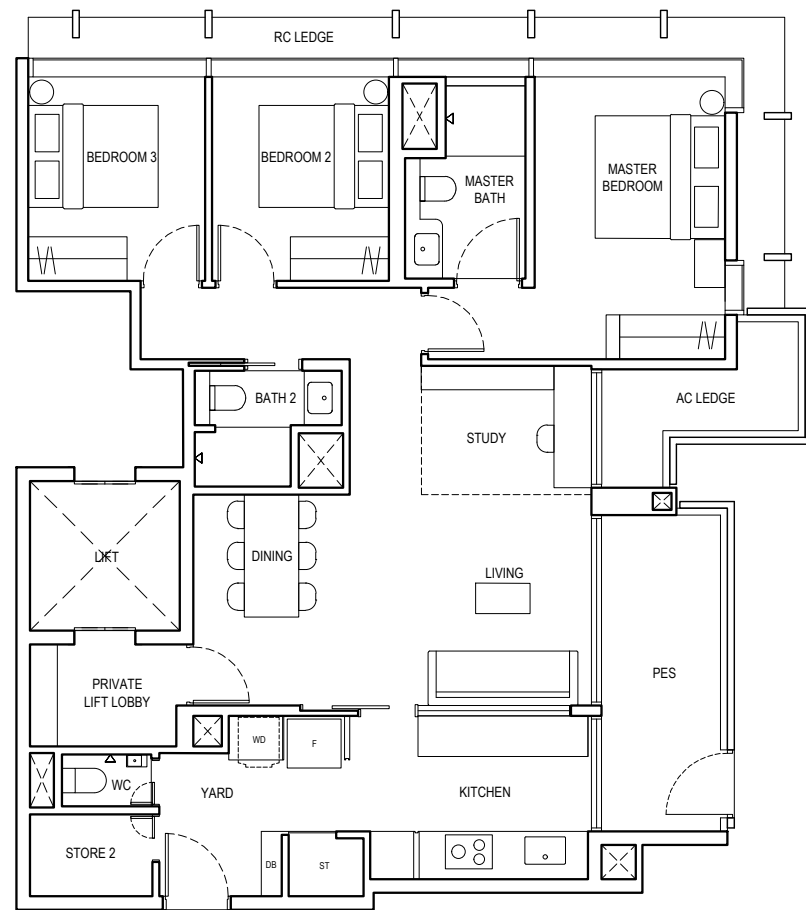
3 BEDROOM + STUDY

Type C8-G

114 m² / 1227 ft²

Inclusive of 10 m² PES &
5 m² AC Ledge

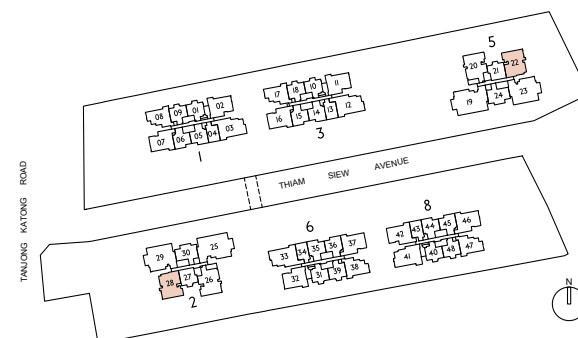
BLOCK 2 #01-28
BLOCK 5 #01-22



LEGEND			
PES	PRIVATE ENCLOSED SPACE	ST	STORE 1
DB	DISTRIBUTION BOARD	WC	WATER CLOSET
F	FRIDGE	RC	REINFORCED CONCRETE (EXCLUDED FROM STRATA AREA)
WD	WASHER DRYER COMBO	⊠	VOID SPACE (EXCLUDED FROM STRATA AREA)
AC	AIR-CONDITIONER		



ALL PLANS ARE SUBJECT TO CHANGES BY THE RELEVANT AUTHORITIES.
MEASUREMENTS ARE APPROXIMATE ONLY AND SUBJECT TO FINAL SURVEY.
INFORMATION ACCURATE AT POINT OF PRINTING.
BP APPROVAL NO.: A1716-00010-2021-BP01 DATED 24/03/2023



Type C8

3 BEDROOM + STUDY

Type C8

115 m² / 1238 ft²

Inclusive of 10 m² Balcony &
6 m² AC Ledge

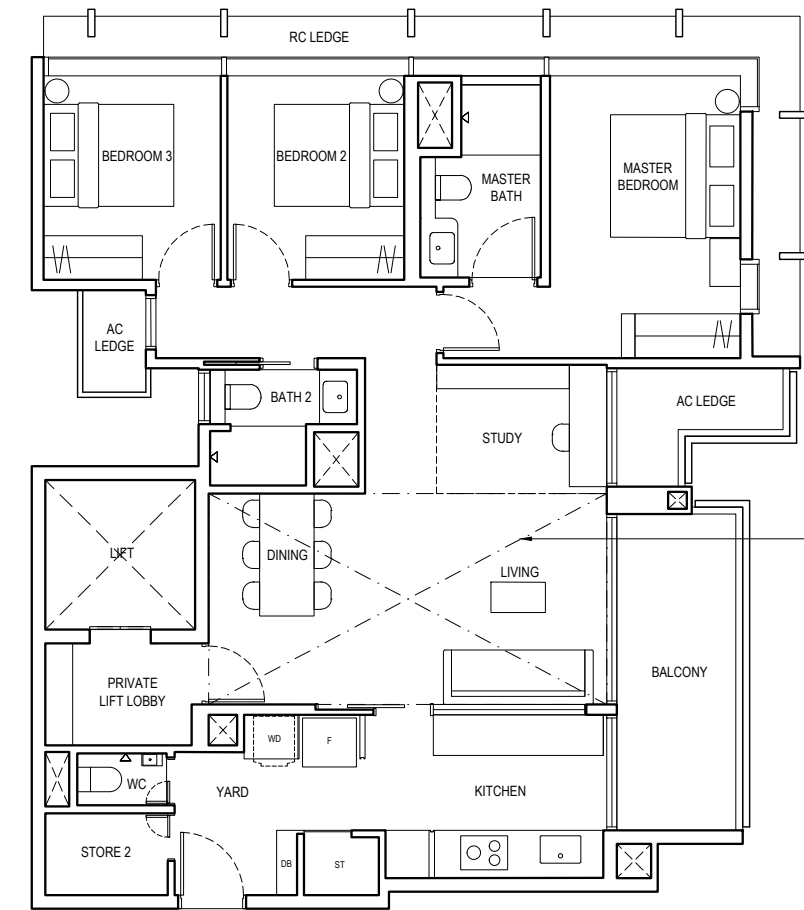
BLOCK 2 #02-28 to #17-28
BLOCK 5 #02-22 to #17-22

Type C8-PH

135 m² / 1453 ft²

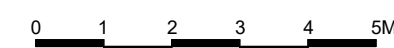
Inclusive of 20 m² Strata Void,
10 m² Balcony & 6 m² AC Ledge

BLOCK 2 #18-28
BLOCK 5 #18-22



DOTTED LINE DENOTES
STRATA VOID COMPLETE
WITH BULKHEAD AT
TYPE C8-PH

LEGEND			
PES	PRIVATE ENCLOSED SPACE	ST	STORE 1
DB	DISTRIBUTION BOARD	WC	WATER CLOSET
F	FRIDGE	RC	REINFORCED CONCRETE (EXCLUDED FROM STRATA AREA)
WD	WASHER DRYER COMBO	⊠	VOID SPACE (EXCLUDED FROM STRATA AREA)
AC	AIR-CONDITIONER		



ALL PLANS ARE SUBJECT TO CHANGES BY THE RELEVANT AUTHORITIES.
MEASUREMENTS ARE APPROXIMATE ONLY AND SUBJECT TO FINAL SURVEY.
INFORMATION ACCURATE AT POINT OF PRINTING.
BP APPROVAL NO.: A1716-00010-2021-BP01 DATED 24/03/2023



Type C9

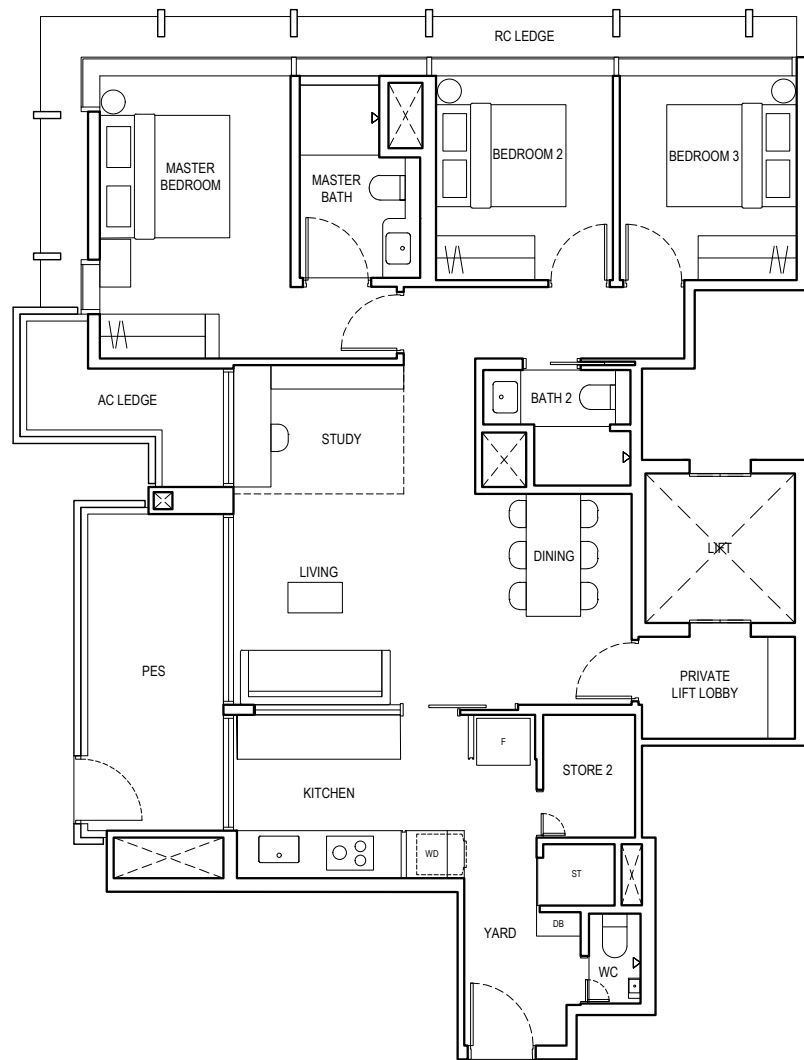
3 BEDROOM + STUDY

Type C9-G

116 m² / 1249 ft²

Inclusive of 11 m² PES &
6 m² AC Ledge

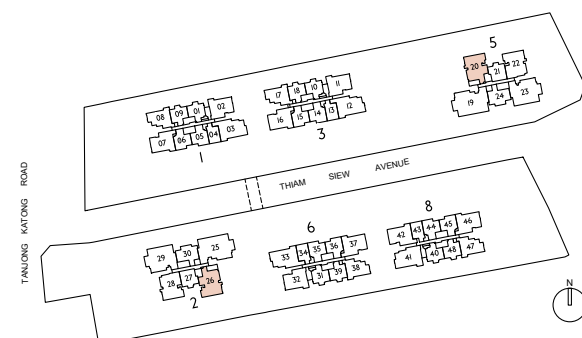
BLOCK 2 #01-26
BLOCK 5 #01-20



LEGEND			
PES	PRIVATE ENCLOSED SPACE	ST	STORE 1
DB	DISTRIBUTION BOARD	WC	WATER CLOSET
F	FRIDGE	RC	REINFORCED CONCRETE (EXCLUDED FROM STRATA AREA)
WD	WASHER DRYER COMBO	□	VOID SPACE (EXCLUDED FROM STRATA AREA)
AC	AIR-CONDITIONER		



ALL PLANS ARE SUBJECT TO CHANGES BY THE RELEVANT AUTHORITIES.
MEASUREMENTS ARE APPROXIMATE ONLY AND SUBJECT TO FINAL SURVEY.
INFORMATION ACCURATE AT POINT OF PRINTING.
BP APPROVAL NO.: A1716-00010-2021-BP01 DATED 24/03/2023



Type C9

3 BEDROOM + STUDY

Type C9

116 m² / 1249 ft²

Inclusive of 11 m² Balcony &
6 m² AC Ledge

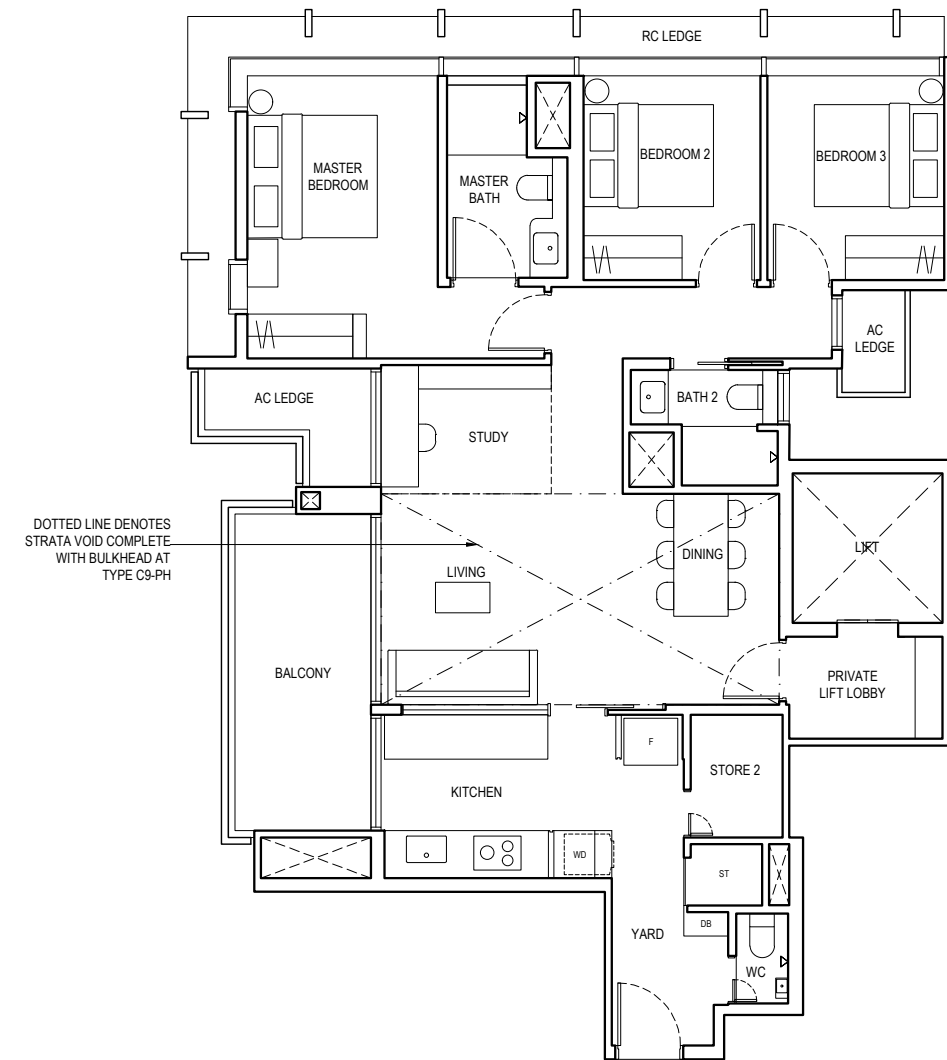
BLOCK 2 #02-26 to #17-26
BLOCK 5 #02-20 to #17-20

Type C9-PH

136 m² / 1464 ft²

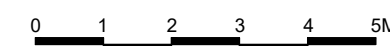
Inclusive of 20 m² Strata Void,
11 m² Balcony & 6 m² AC Ledge

BLOCK 2 #18-26
BLOCK 5 #18-20

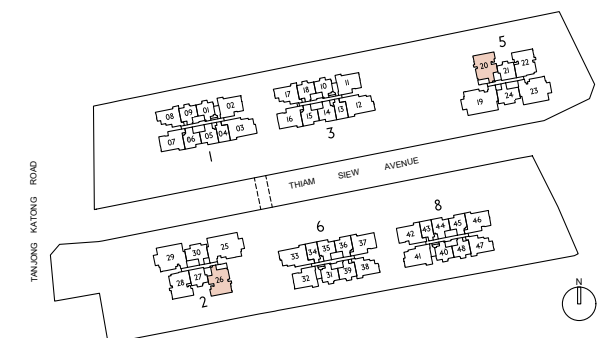


DOTTED LINE DENOTES
STRATA VOID COMPLETE
WITH BULKHEAD AT
TYPE C9-PH

LEGEND			
PES	PRIVATE ENCLOSED SPACE	ST	STORE 1
DB	DISTRIBUTION BOARD	WC	WATER CLOSET
F	FRIDGE	RC	REINFORCED CONCRETE (EXCLUDED FROM STRATA AREA)
WD	WASHER DRYER COMBO	□	VOID SPACE (EXCLUDED FROM STRATA AREA)
AC	AIR-CONDITIONER		



ALL PLANS ARE SUBJECT TO CHANGES BY THE RELEVANT AUTHORITIES.
MEASUREMENTS ARE APPROXIMATE ONLY AND SUBJECT TO FINAL SURVEY.
INFORMATION ACCURATE AT POINT OF PRINTING.
BP APPROVAL NO.: A1716-00010-2021-BP01 DATED 24/03/2023



Type D1

4 BEDROOM

Type D1-G

114 m² / 1227 ft²

Inclusive of 5 m² PES & 7 m² AC ledge

BLOCK 8 #01-41

Type D1

114 m² / 1227 ft²

Inclusive of 5 m² Balcony & 7 m² AC ledge

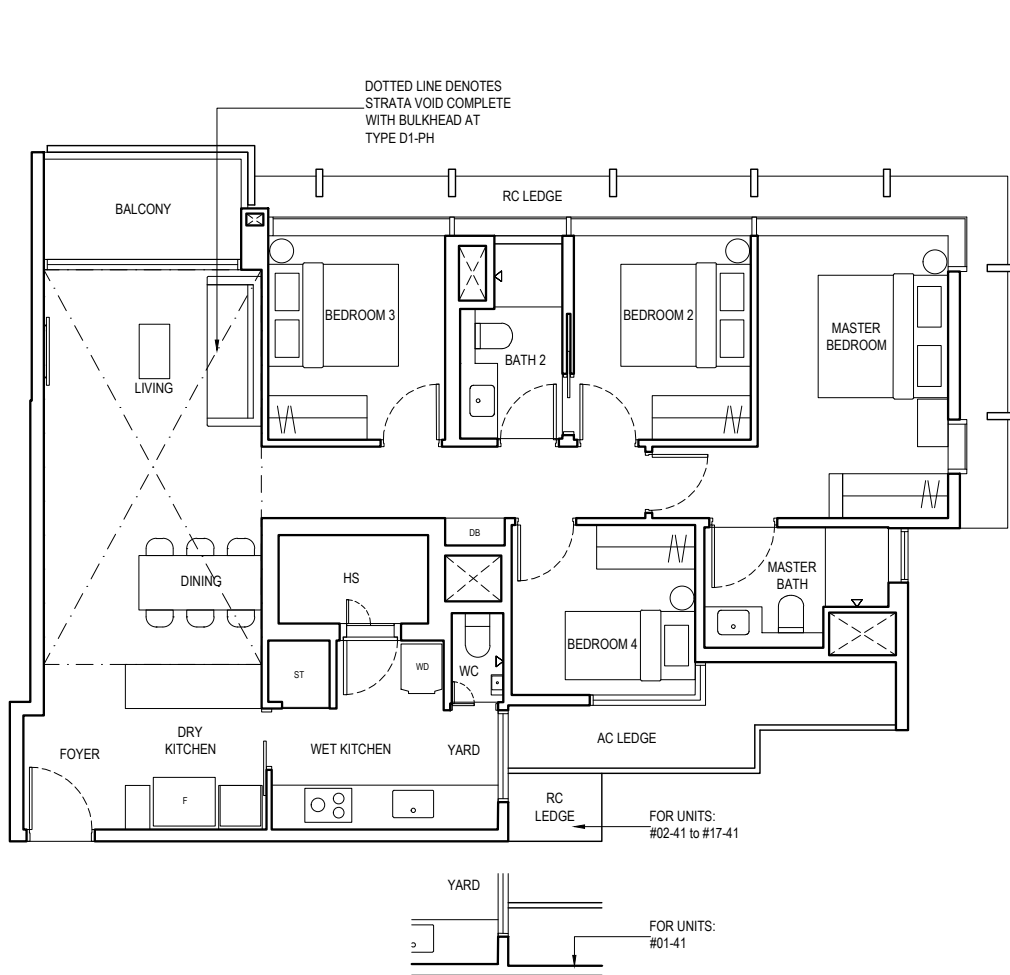
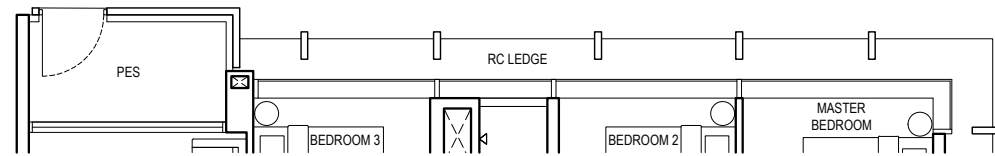
BLOCK 8 #02-41 to #16-41

Type D1-PH

135 m² / 1453 ft²

Inclusive of 21 m² Strata Void, 5 m² Balcony & 7 m² AC ledge

BLOCK 8 #17-41



Type D2

4 BEDROOM

Type D2-G

118 m² / 1270 ft²

Inclusive of 5 m² PES & 7 m² AC ledge

BLOCK 3 #01-12
BLOCK 6 #01-33

Type D2

118 m² / 1270 ft²

Inclusive of 5 m² Balcony & 7 m² AC ledge

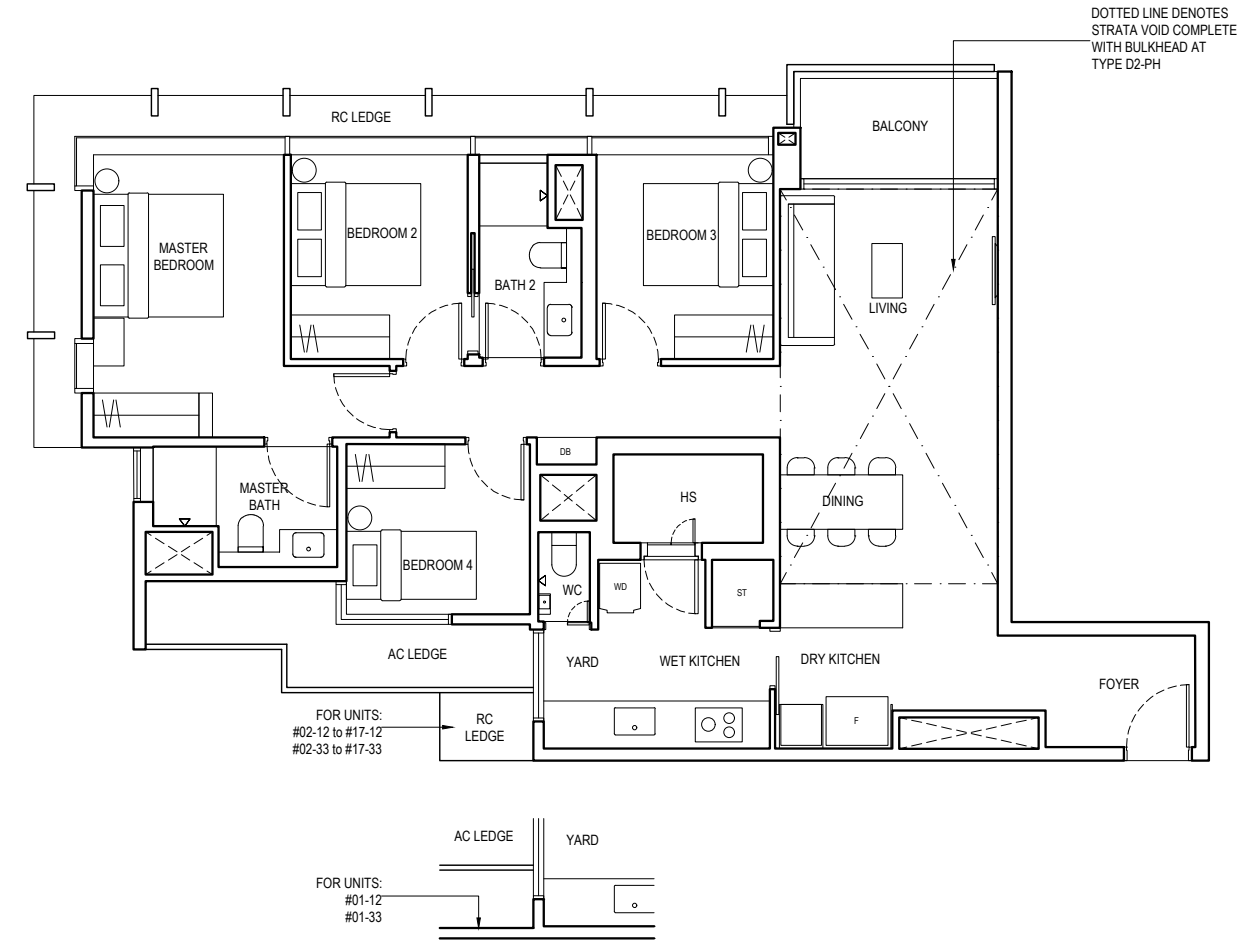
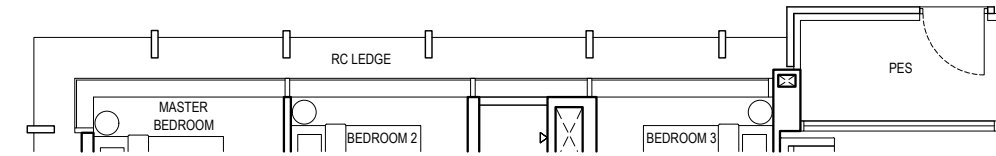
BLOCK 3 #02-12 to #16-12
BLOCK 6 #02-33 to #16-33

Type D2-PH

139 m² / 1496 ft²

Inclusive of 21 m² Strata Void, 5 m² Balcony & 7 m² AC ledge

BLOCK 3 #17-12
BLOCK 6 #17-33

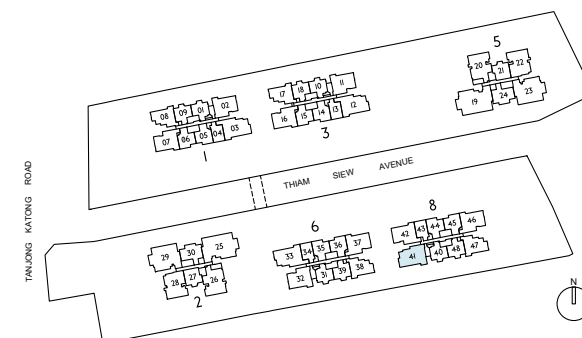


LEGEND

PES	PRIVATE ENCLOSED SPACE	ST	STORE I
DB	DISTRIBUTION BOARD	HS	HOUSEHOLD SHELTER
F	FRIDGE	WC	WATER CLOSET
WD	WASHER DRYER COMBO	RC	REINFORCED CONCRETE (EXCLUDED FROM STRATA AREA)
AC	AIR-CONDITIONER	☐	VOID SPACE (EXCLUDED FROM STRATA AREA)



ALL PLANS ARE SUBJECT TO CHANGES BY THE RELEVANT AUTHORITIES. MEASUREMENTS ARE APPROXIMATE ONLY AND SUBJECT TO FINAL SURVEY. INFORMATION ACCURATE AT POINT OF PRINTING. BP APPROVAL NO.: A1716-00010-2021-BP01 DATED 24/03/2023

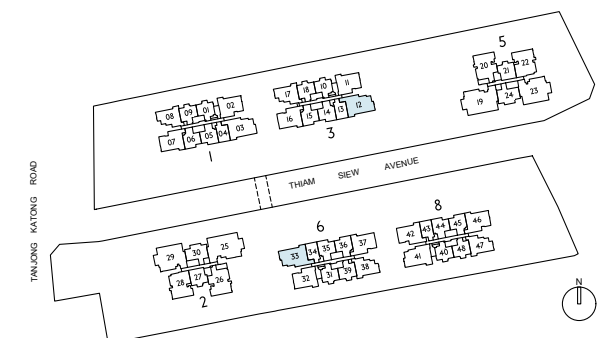


LEGEND

PES	PRIVATE ENCLOSED SPACE	ST	STORE I
DB	DISTRIBUTION BOARD	HS	HOUSEHOLD SHELTER
F	FRIDGE	WC	WATER CLOSET
WD	WASHER DRYER COMBO	RC	REINFORCED CONCRETE (EXCLUDED FROM STRATA AREA)
AC	AIR-CONDITIONER	☐	VOID SPACE (EXCLUDED FROM STRATA AREA)



ALL PLANS ARE SUBJECT TO CHANGES BY THE RELEVANT AUTHORITIES. MEASUREMENTS ARE APPROXIMATE ONLY AND SUBJECT TO FINAL SURVEY. INFORMATION ACCURATE AT POINT OF PRINTING. BP APPROVAL NO.: A1716-00010-2021-BP01 DATED 24/03/2023



Type D3

4 BEDROOM

Type D3-G

120 m² / 1292 ft²

Inclusive of 5 m² PES & 8 m² AC Ledge

BLOCK 1 #01-03

Type D3

120 m² / 1292 ft²

Inclusive of 5 m² Balcony & 8 m² AC Ledge

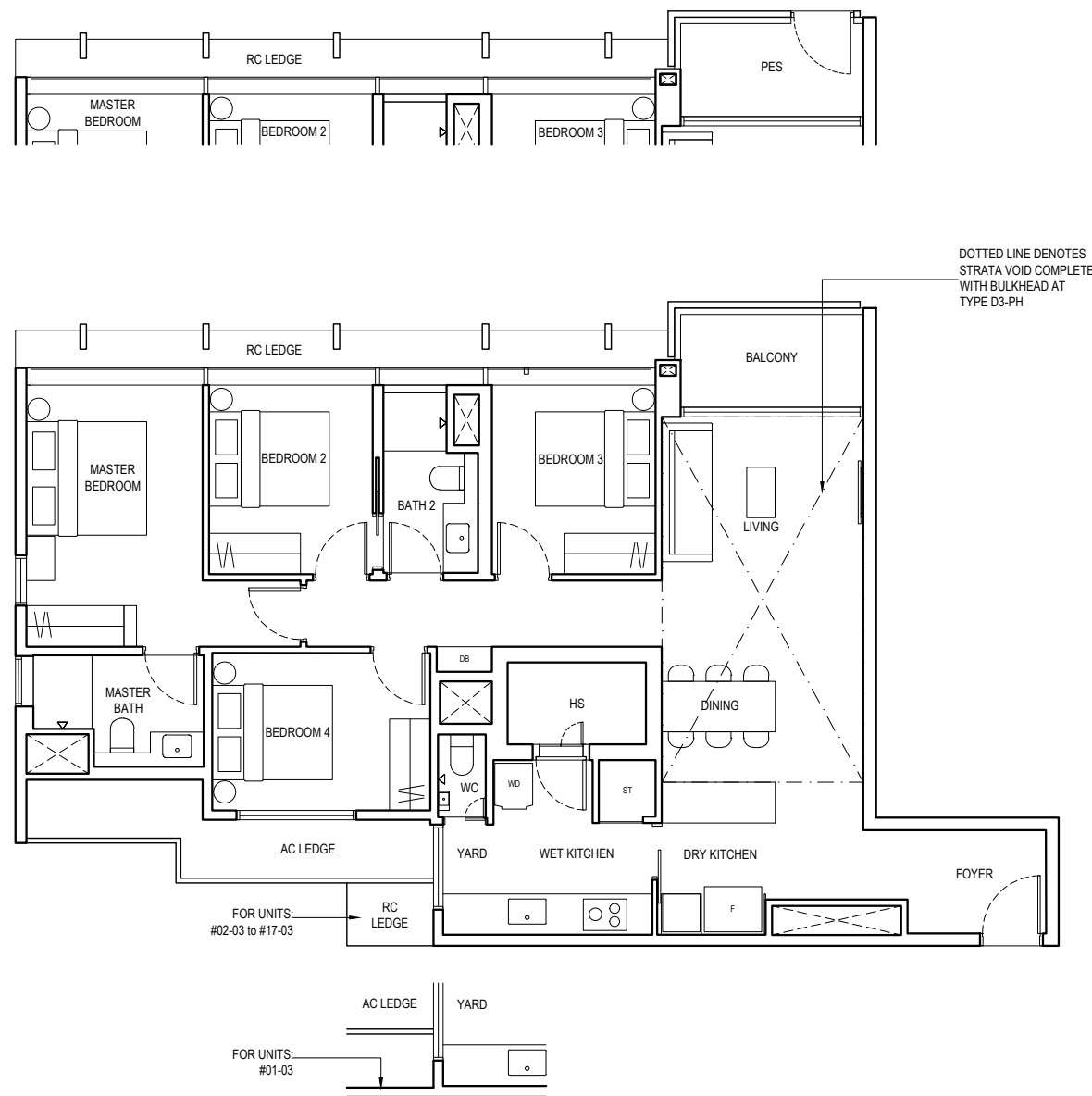
BLOCK 1 #02-03 to #16-03

Type D3-PH

141 m² / 1518 ft²

Inclusive of 21 m² Strata Void, 5 m² Balcony & 8 m² AC Ledge

BLOCK 1 #17-03



Type D4

4 BEDROOM PREMIER

Type D4

157 m² / 1690 ft²

Inclusive of 11 m² Balcony & 7 m² AC Ledge

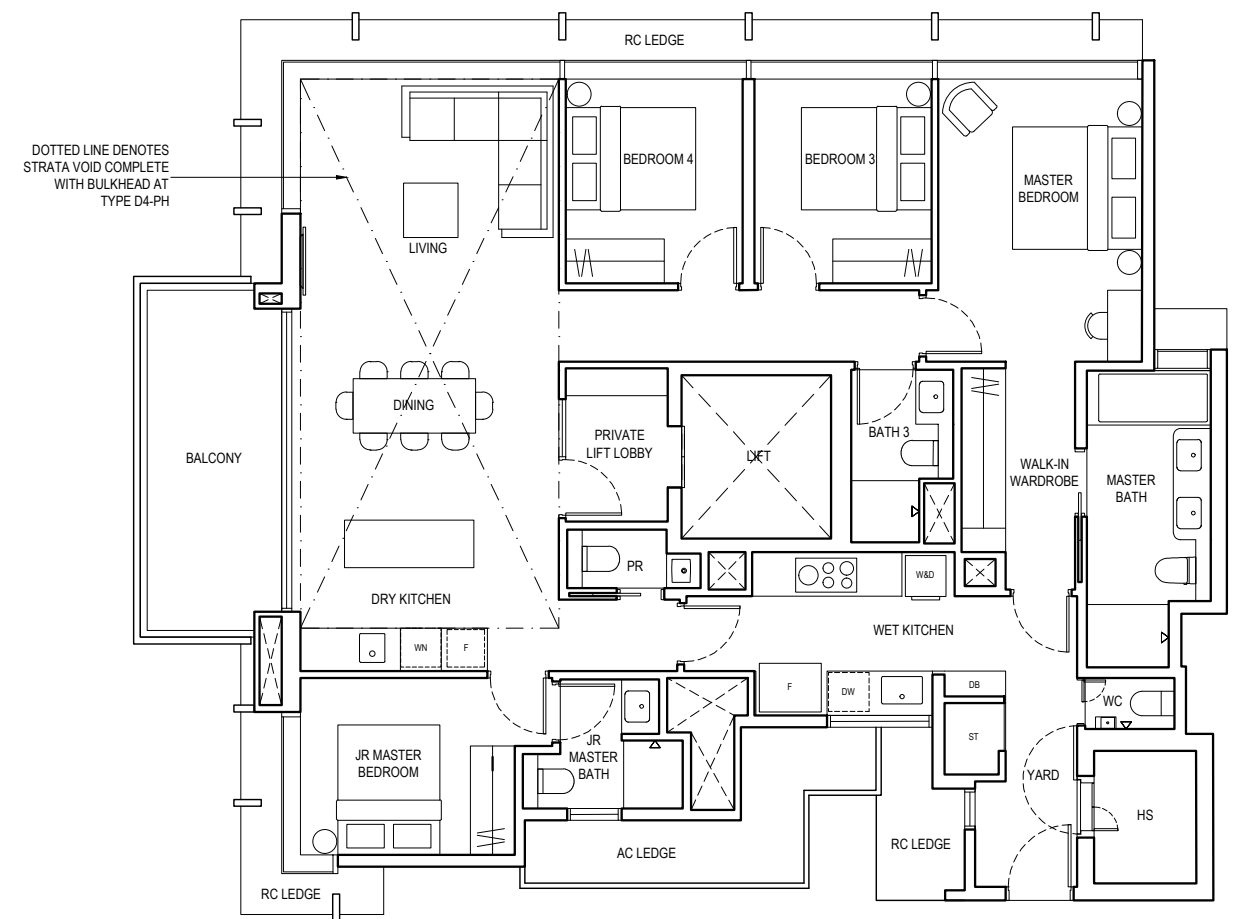
BLOCK 2 #03-29 to #17-29
BLOCK 5 #03-23 to #17-23

Type D4-PH

189 m² / 2034 ft²

Inclusive of 32 m² Strata Void, 11 m² Balcony & 7 m² AC Ledge

BLOCK 2 #18-29
BLOCK 5 #18-23

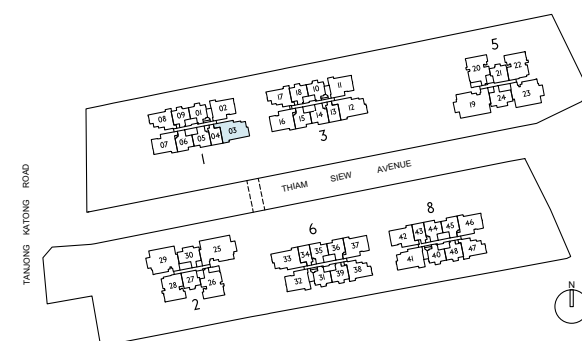


LEGEND

PES	PRIVATE ENCLOSED SPACE	ST	STORE I
DB	DISTRIBUTION BOARD	HS	HOUSEHOLD SHELTER
F	FRIDGE	WC	WATER CLOSET
WD	WASHER DRYER COMBO	RC	REINFORCED CONCRETE (EXCLUDED FROM STRATA AREA)
AC	AIR-CONDITIONER	⊠	VOID SPACE (EXCLUDED FROM STRATA AREA)



ALL PLANS ARE SUBJECT TO CHANGES BY THE RELEVANT AUTHORITIES. MEASUREMENTS ARE APPROXIMATE ONLY AND SUBJECT TO FINAL SURVEY. INFORMATION ACCURATE AT POINT OF PRINTING. BP APPROVAL NO.: A1716-00010-2021-BP01 DATED 24/03/2023

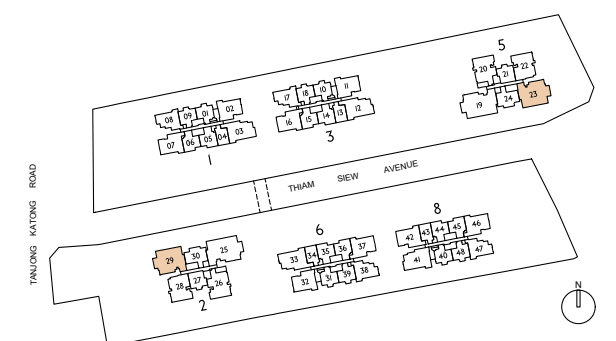


LEGEND

DB	DISTRIBUTION BOARD	PR	POWDER ROOM
F	FRIDGE	DW	DISHWASHER
W	WASHER	WN	WINE CHILLER
D	DRYER	WC	WATER CLOSET
HS	HOUSEHOLD SHELTER	RC	REINFORCED CONCRETE (EXCLUDED FROM STRATA AREA)
AC	AIR-CONDITIONER	⊠	VOID SPACE (EXCLUDED FROM STRATA AREA)
ST	STORE I		



ALL PLANS ARE SUBJECT TO CHANGES BY THE RELEVANT AUTHORITIES. MEASUREMENTS ARE APPROXIMATE ONLY AND SUBJECT TO FINAL SURVEY. INFORMATION ACCURATE AT POINT OF PRINTING. BP APPROVAL NO.: A1716-00010-2021-BP01 DATED 24/03/2023



Type E

5 BEDROOM

Type E

177 m² / 1905 ft²

Inclusive of 11 m² Balcony & 9 m² AC Ledge

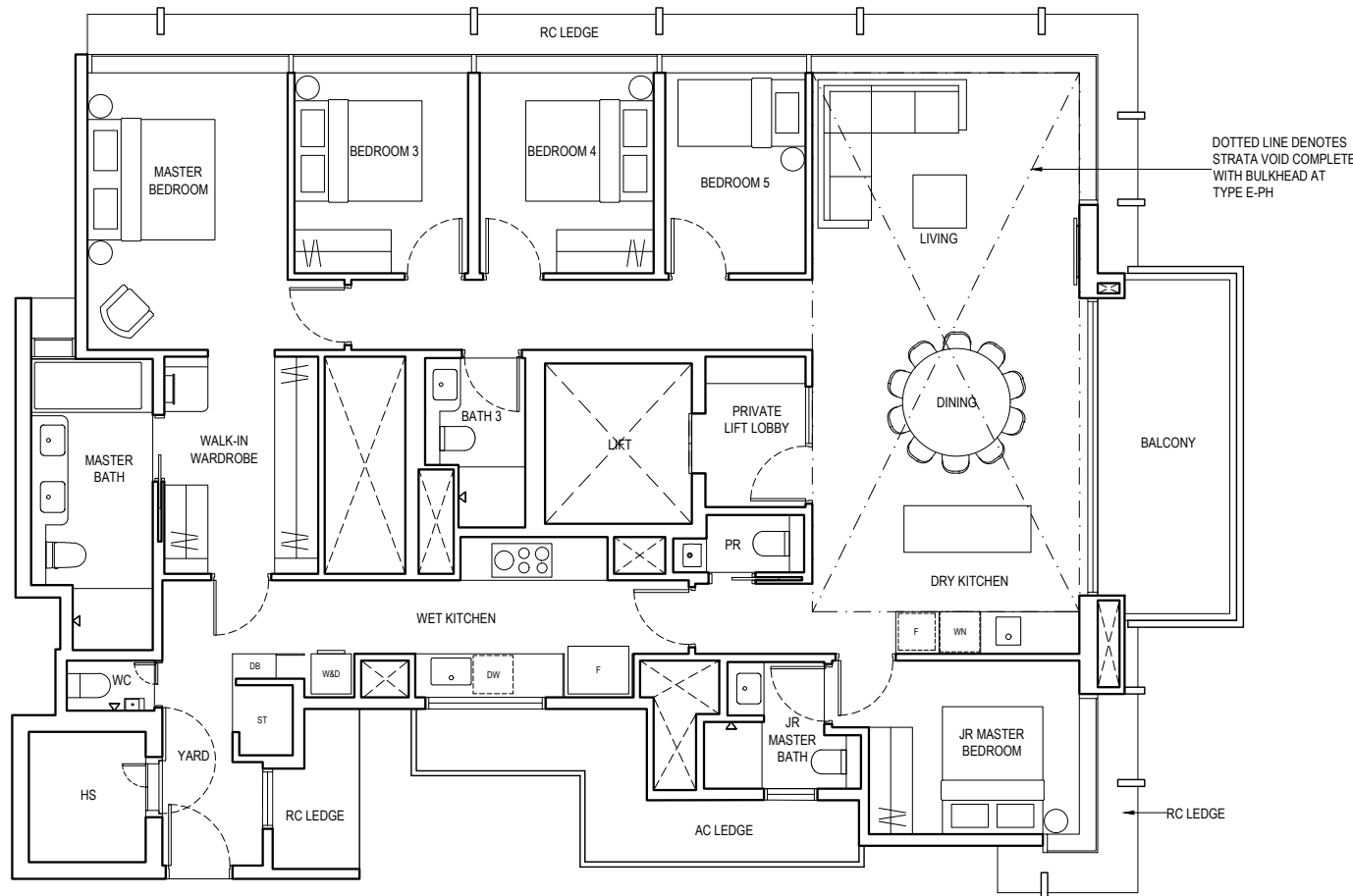
BLOCK 2 #03-25 to #17-25
BLOCK 5 #03-19 to #17-19

Type E-PH

210 m² / 2260 ft²

Inclusive of 33 m² Strata Void, 11 m² Balcony & 9 m² AC Ledge

BLOCK 2 #18-25
BLOCK 5 #18-19

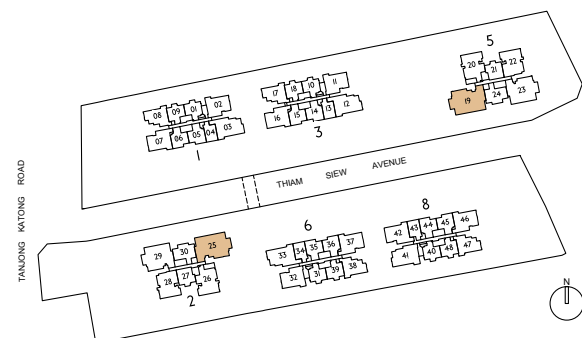


LEGEND

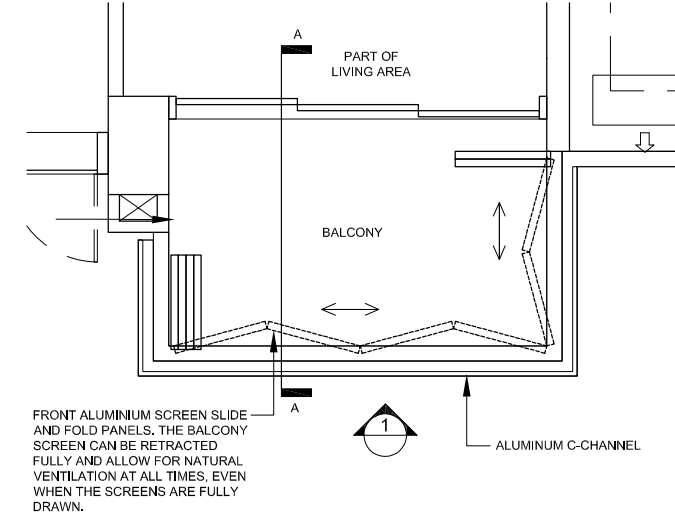
DB	DISTRIBUTION BOARD	PR	POWDER ROOM
F	FRIDGE	DW	DISHWASHER
W	WASHER	WN	WINE CHILLER
D	DRYER	WC	WATER CLOSET
HS	HOUSEHOLD SHELTER	RC	REINFORCED CONCRETE (EXCLUDED FROM STRATA AREA)
AC	AIR-CONDITIONER	⬜	VOID SPACE (EXCLUDED FROM STRATA AREA)
ST	STORE		



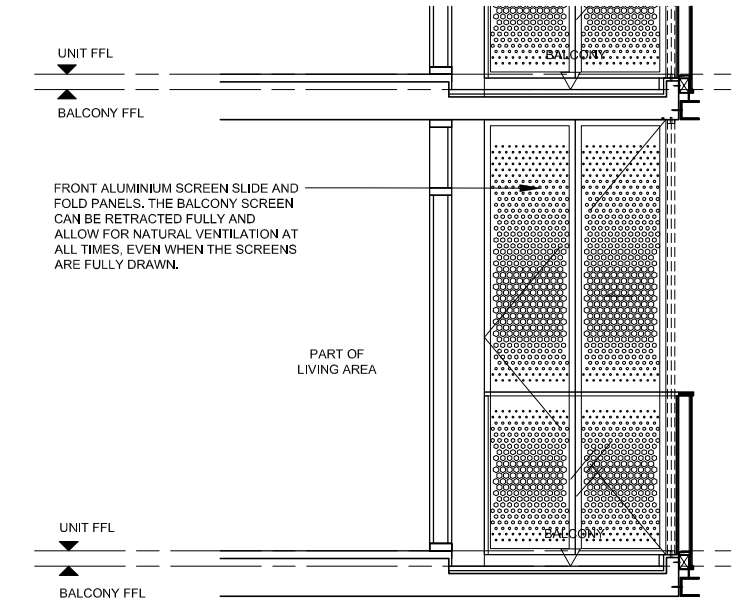
ALL PLANS ARE SUBJECT TO CHANGES BY THE RELEVANT AUTHORITIES. MEASUREMENTS ARE APPROXIMATE ONLY AND SUBJECT TO FINAL SURVEY. INFORMATION ACCURATE AT POINT OF PRINTING. BP APPROVAL NO.: A176-00010-2021-BP01 DATED 24/03/2023



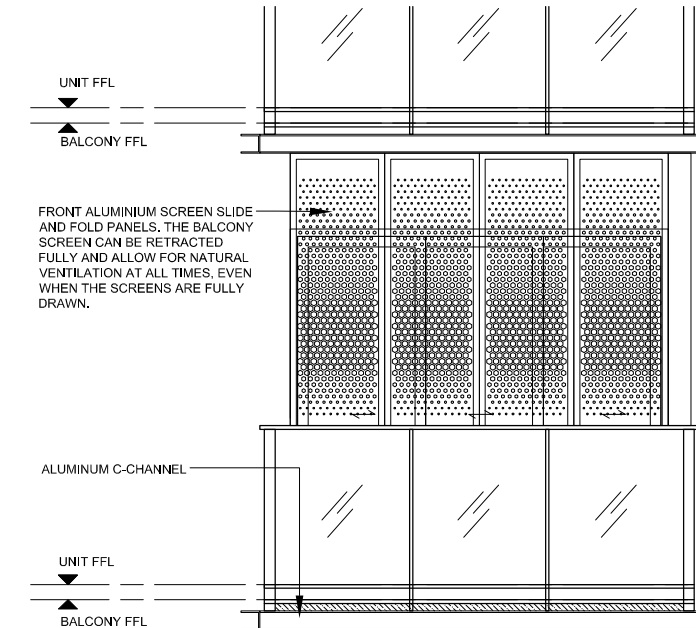
Approved Balcony Chart



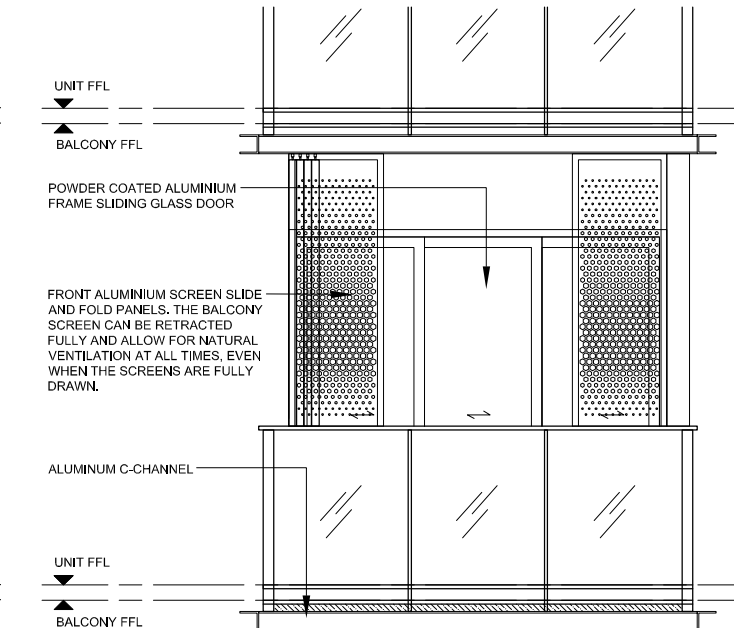
TYPICAL RETRACTABLE BALCONY SCREEN PLAN



TYPICAL RETRACTABLE BALCONY SCREEN SECTION



TYPICAL RETRACTABLE BALCONY SCREEN ELEVATION (*FULLY DRAWN)



TYPICAL RETRACTABLE BALCONY SCREEN ELEVATION (*FULLY RETRACTED)

NOTE

1. Aluminium louver sliding folding screen is not provided for this development (unless otherwise stated).
2. The balcony shall not be enclosed unless the screen is approved by the relevant authorities.
3. Final selection of material, colour and detailing of the screen is subject to MCST & relevant authorities approval.
4. Approval from MCST is required before installation.
5. Owner to engage the developer's appointed contractor and/or their own contractor to install the screen.
6. All installation fees to be borne by the owner.
7. Measurements are approximate only and subject to final survey.



About The Developers

Hoi Hup Sunway is an award winning collaboration between Hoi Hup Realty and Sunway Developments. Bringing together the expertise and experience of two real estate leaders, this winning combination has inspired many successful projects. One of their projects Sophia Hills has been honoured with Gold at the FIABCI World Prix d'Excellence Awards 2020 (Mid-rise Residential), EdgeProp Singapore Excellence Awards 2020 for Top Development (Residential, Central, Completed), and FIABCI-Singapore Proper Awards 2019 (Mid-rise Residential and Heritage).

The conglomerate's project Ki Residences at Brookvale has also been awarded PropertyGuru Asia Property Awards, Winner of Best Private Condo Interior Design (Singapore) and Highly Commended Best Private Condo Interior Design (Singapore) and Best Private Condo Landscape Architectural Design (Singapore), EdgeProp Singapore Excellence Award Design Excellence and Sustainability Excellence.

Its current projects include Terra Hill, Ki Residences at Brookvale and Parc Central Residences.



Hoi Hup Realty

An established property developer in Singapore, Hoi Hup Realty Pte Ltd is committed to creating living spaces of the highest quality, comfort, functionality, and style. It has been recognised with numerous accolades including the BCI Asia Top Ten Developers Award from 2017 to 2021, BCA Quality Excellence Award – Quality Champion (Platinum) in 2018 and 2019, and the EdgeProp Singapore Excellence Award 2021 Top Developer.

WWW.HOIHUP.COM

Sunway Developments

Sunway Developments Pte Ltd is a component of Sunway Property, which is the property division of Sunway Group, one of Southeast Asia's leading conglomerates. As a Master Community Developer, Sunway Property has an established track record in managing and developing innovative and quality residential and non-residential properties in the region, including retail, leisure, healthcare, hospitality, as well as other commercial assets.

WWW.SUNWAY.COM.MY



THE
CONTINUUM

6311 9555



ENQUIRY@HOIHUP.COM
HOIHUP.COM/THECONTINUUM

A Luxury Development By

HOIHUP REALTY **SUNWAY**
海峽實業私人有限公司

Developer: Hoi Hup Sunway Katong Pte. Ltd. (UEN: 202140399C) Developer Licence No. CI461 Tenure of Land: Estate in Fee Simple for Lots 3220W, 3221V, 3222P, 3223T, 3224A, 3225K, 3226N, 3227X, 3228L, 3229C, 3230X, 4366X, 3234W, 3235V, 3236P, 3237T, 3238A, 3239K, 3240T, 3241A, 3242K, 3243N and 4364K all of MK 25, and Remainder of leasehold estate of 99 years commencing on 2 March 2023 (for proposed overhead bridge (airspace) for Lot 6115N-PT (now known as 70002W) of MK 25. Notice of Vacant Possession: 17 November 2027 Notice of Completion: 17 November 2030 BP Approval No. A1716-00010-2021-BP01 dated 24 March 2023 Encumbrance on the Land: Mortgage in favour of OCBC Bank

All reasonable care has been taken in preparing this brochure and in constructing the models and sales gallery/showflats and all statements are believed to be correct but are not to be regarded as statements or representations of fact. All information and specifications are current at the time of going to press and are subject to such changes as may be required by the Developer. All plans and models are not to scale unless expressly stated and are subject to any amendments which are required or approved by the relevant authorities. Renderings and illustrations are artist's impressions only and photographs are only decor suggestions and cannot be regarded as representations of fact. All areas and other measurements are subject to final survey. The Option to Purchase embodies all the terms and conditions between the Developer and the Purchaser and supersedes and cancels in all respects all previous representations, warranties, promises, inducements or statements of intention, whether written or oral made by the Developer and/or the Developer's agent which are not embodied in the Option to Purchase.

