

THE TRIPLEX. PRIVACY MEETS PERSONALITY.

Far East
SO/HO
Space Evolves.

Winner of // FIABCI World Prix d'Excellence awards, the highest honour in international real estate.

Developer: Kentish View Pte Ltd and Lucky Pinnacle Pte Ltd Joint Venture (1945001006 & 201078111) • Licence No: CI124 • Tenure: Leasehold 110 years from 1 Nov 2017 • Encumbrances: Nil • Land Description: Lots 72137, 72138 & 7213A of MK 4 • Inspected Vacant Possession Date: 31 Dec 2023 • Expected Legal Completion Date: 31 Dec 2024

Approved Use of the Unit: The Unit is approved for use for residential purpose under the Planning Act. The purchaser may not use the Unit for any other purpose unless permitted by the Competent Authority or authorized under the Planning Act. The Purchaser is authorized to use the Unit as a home-office for a small scale business only if the conditions for the change in home-office use as set out in the Planning (Development of Land Authorisation) Notification e.g. Kolping the required registration form for the change in use with the Competent Authority, are complied with.

DISCLAIMER: The information contained herein is subject to change and cannot form part of an offer or contract. While every reasonable care has been taken in providing this information, the developer or its agent cannot be held responsible for any inaccuracies. Whilst we believe the contents of this brochure to be correct and accurate at time of print, they are not to be regarded as statements or representations of fact. Illustrations in the brochures are artist's impressions, which serve only to give an approximate idea of the project. All artist's impressions and all plans are subject to any amendments as may be approved by the relevant authorities. The developer reserves the right to modify any parts of the building prior to project completion as approved or directed by the Planning Authorities or as the owner deems fit in its sole discretion.

The developer reserves any and all copyright, design and other proprietary rights in and to this document (or any part thereof) including all or any part of the information, material or artwork contained therein. Unless otherwise expressly agreed to in writing, this document or any part thereof may not be copied, modified, distributed, reproduced or reused without the express written consent of the developer.

2618/211/14/F300



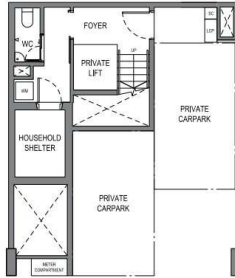
For illustration purposes only

PARKSUITES

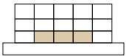
SOHO LIVING BY THE PARK

4 BEDROOM TRIPLEX

TYPE T2
 28 HOLLAND GROVE ROAD
 #03-40
 #03-41 (MIRRORED)
 #03-42



LEVEL 2



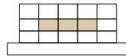
SC SHOE CABINET
 LCP LIFT CONTROL PANEL
 WM WASHER CUM DRYER

0 1M 3M 6M

DISCLAIMER: THE ABOVE PLAN IS SUBJECT TO ANY AMENDMENTS, AS MAY BE APPROVED BY THE RELEVANT AUTHORITIES.

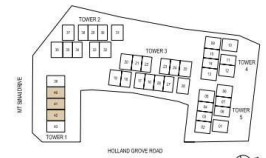
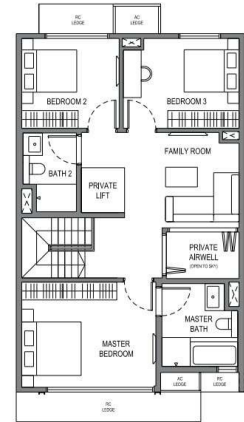
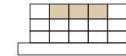


LEVEL 3



F FRIDGE
 DB DISTRIBUTION BOARD

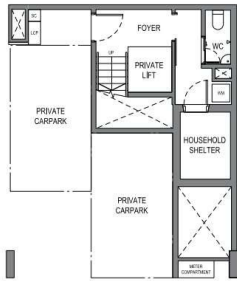
LEVEL 4



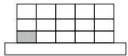
KEY PLAN
 THE DEVELOPMENT TOTAL

4 BEDROOM TRIPLEX

TYPE T1
28 HOLLAND GROVE ROAD
#03-43



LEVEL 2



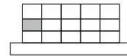
SC SHOE CABINET
LCP LIFT CONTROL PANEL
WM WASHER CUM DRYER

0 1M 3M 6M

DISCLAIMER: THE ABOVE PLAN IS SUBJECT TO ANY AMENDMENTS, AS MAY BE APPROVED BY THE RELEVANT AUTHORITIES.

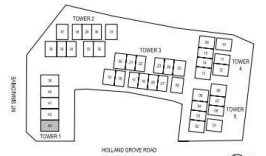
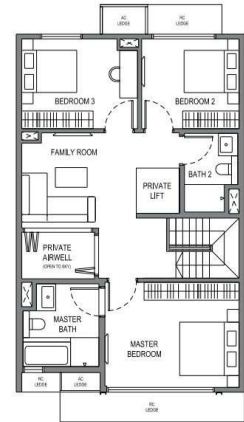
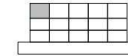


LEVEL 3



F FRIDGE
DB DISTRIBUTION BOARD

LEVEL 4



KEY PLAN
TAKING PLAN AND T1 SCALE