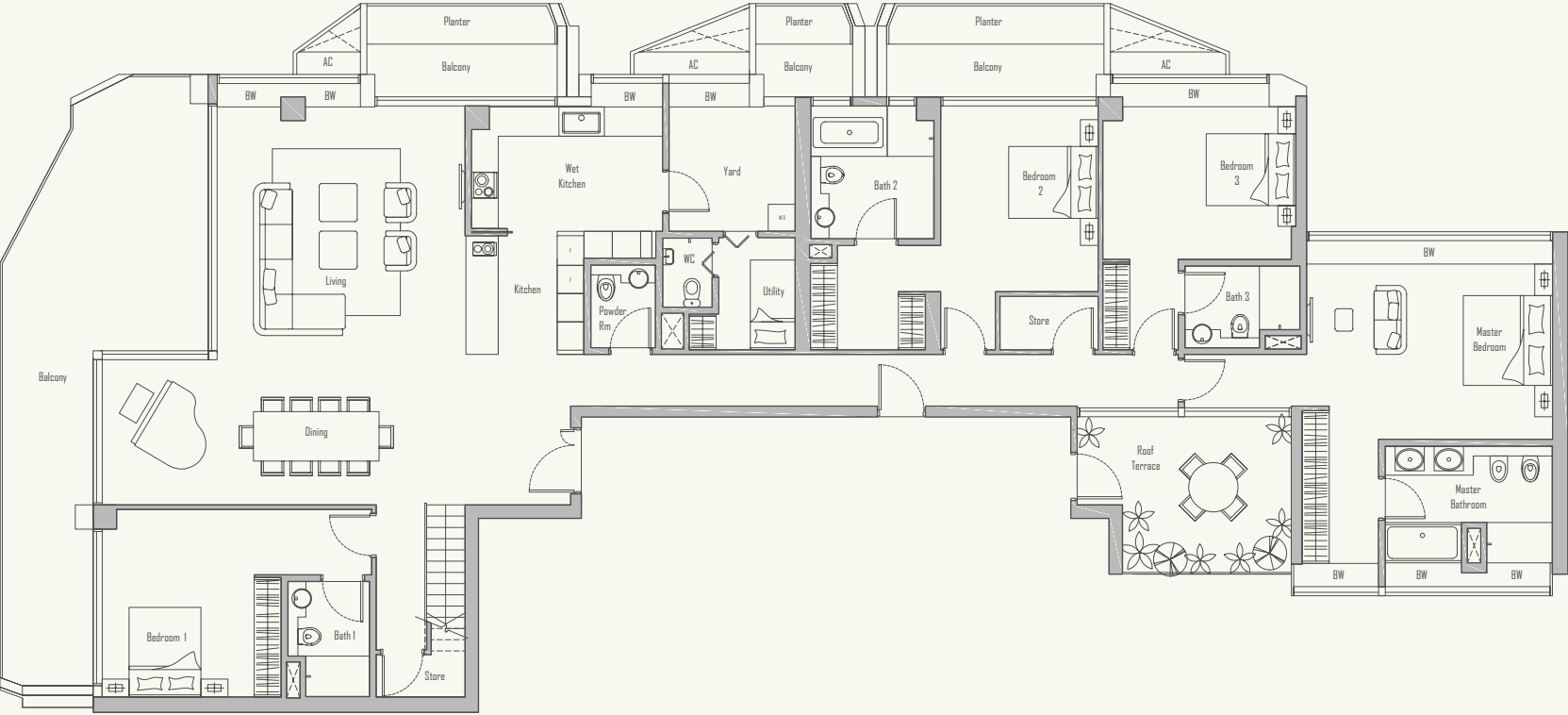


PENTHOUSE

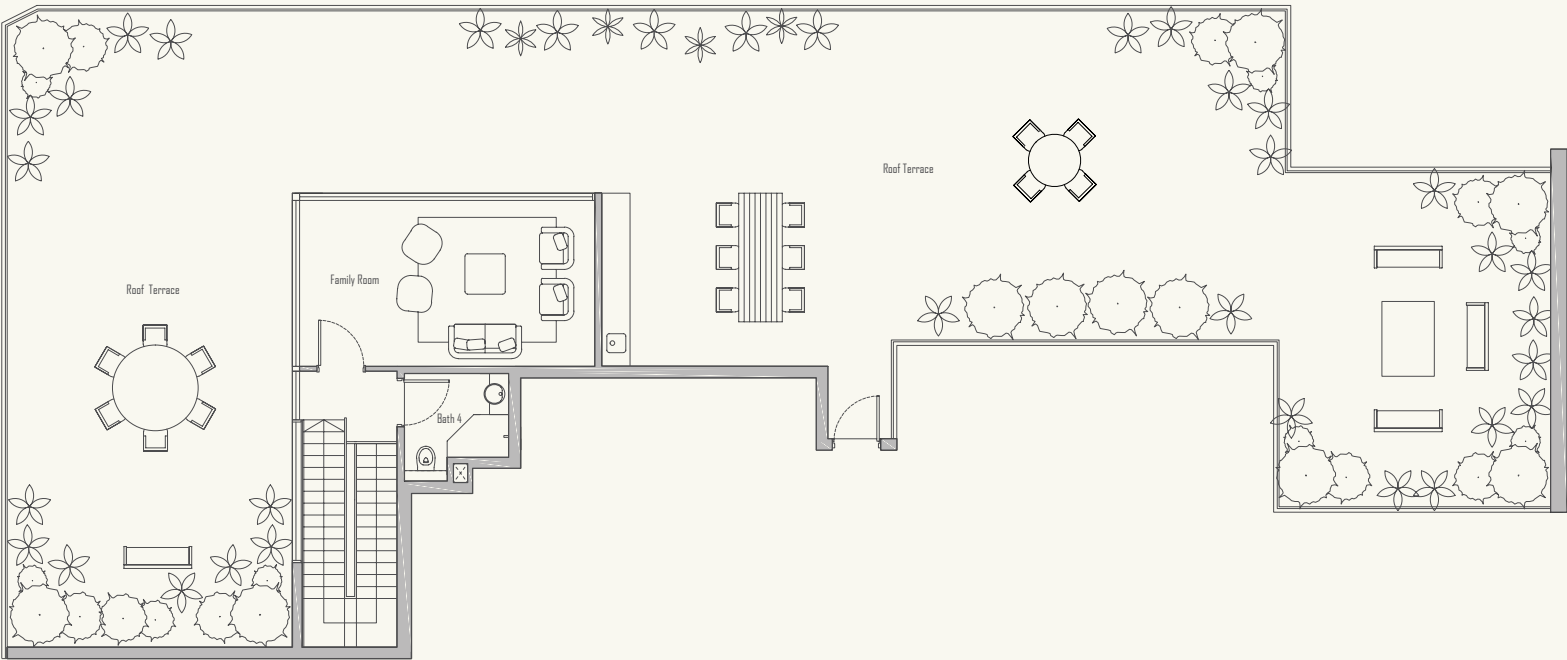
TYPE PH1

674 sqm / 7255 sqft

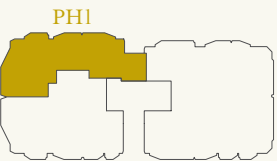
#52-11



Lower Level



Upper Level

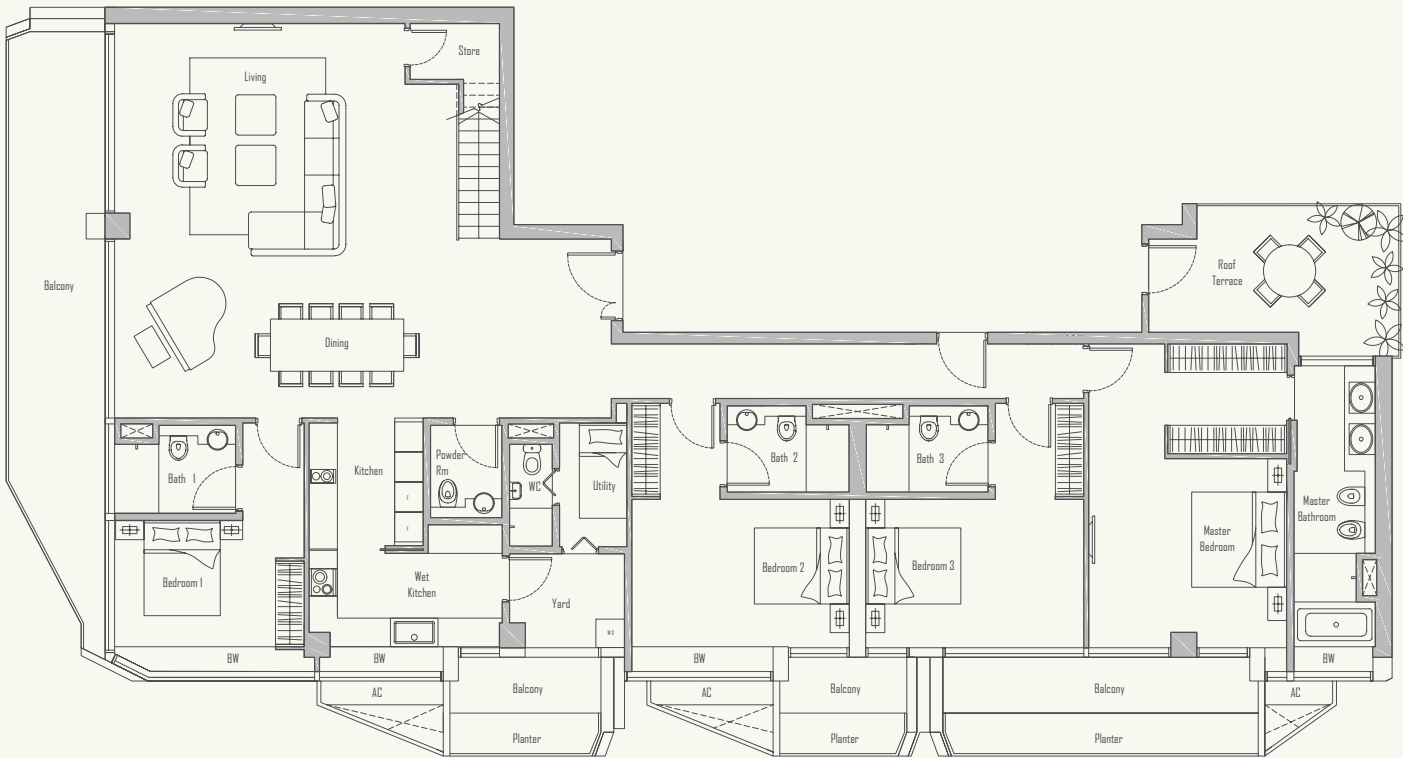


PENTHOUSE

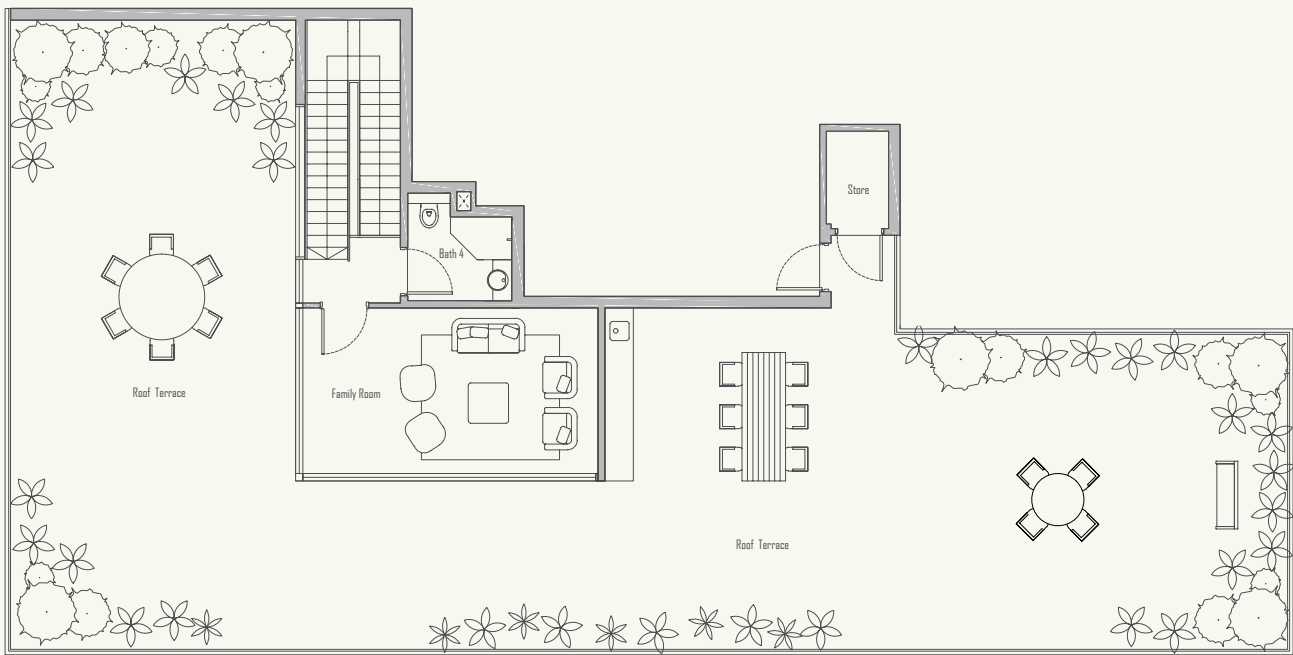
TYPE PH2

576 sqm / 6200 sqft

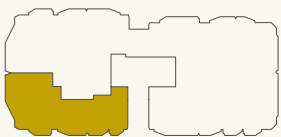
#52-12



Lower Level



Upper Level

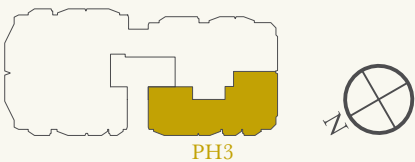
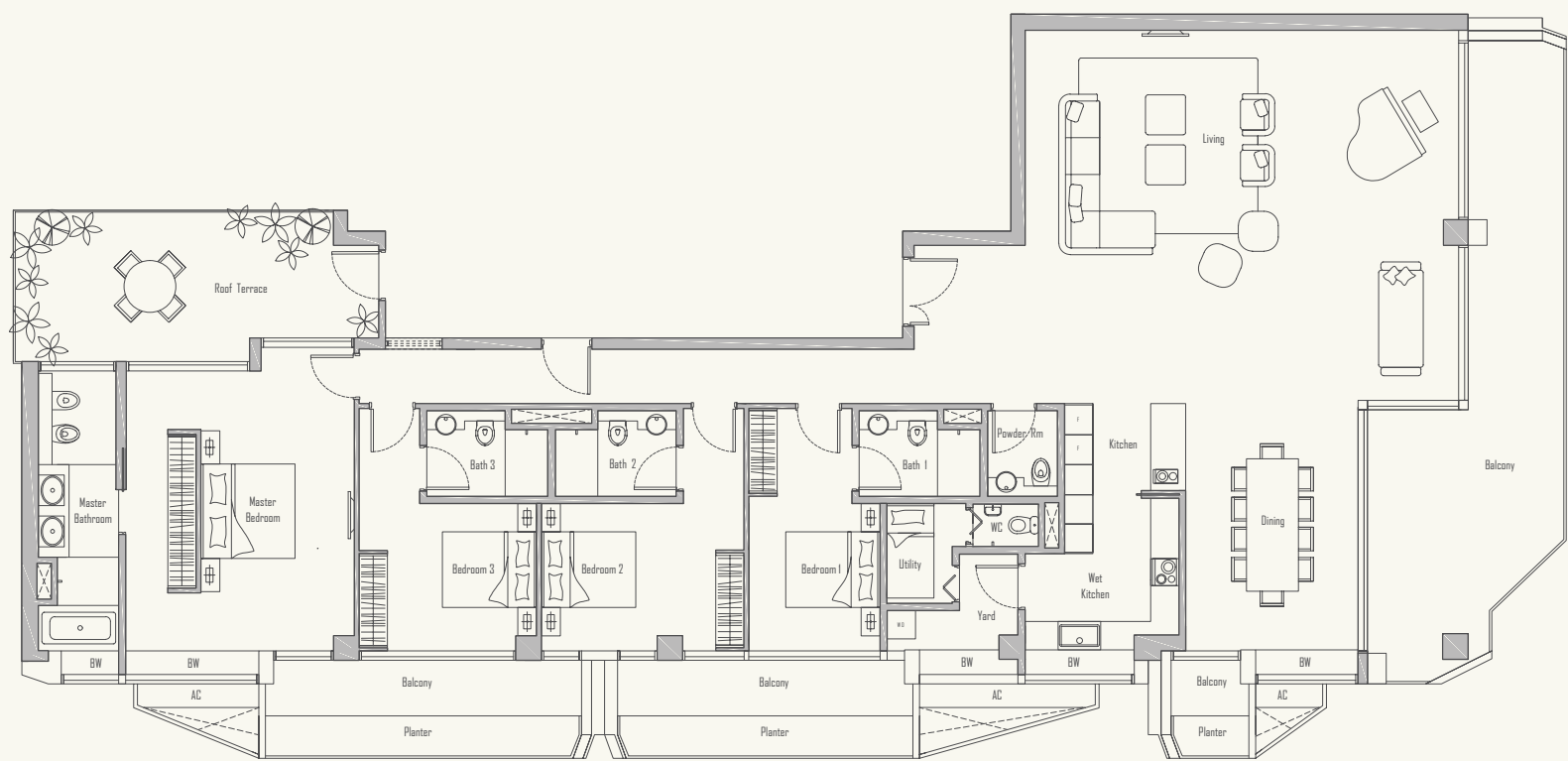


PENTHOUSE

TYPE PH3

364 sqm / 3918 sqft

#52-19



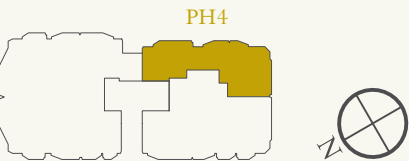
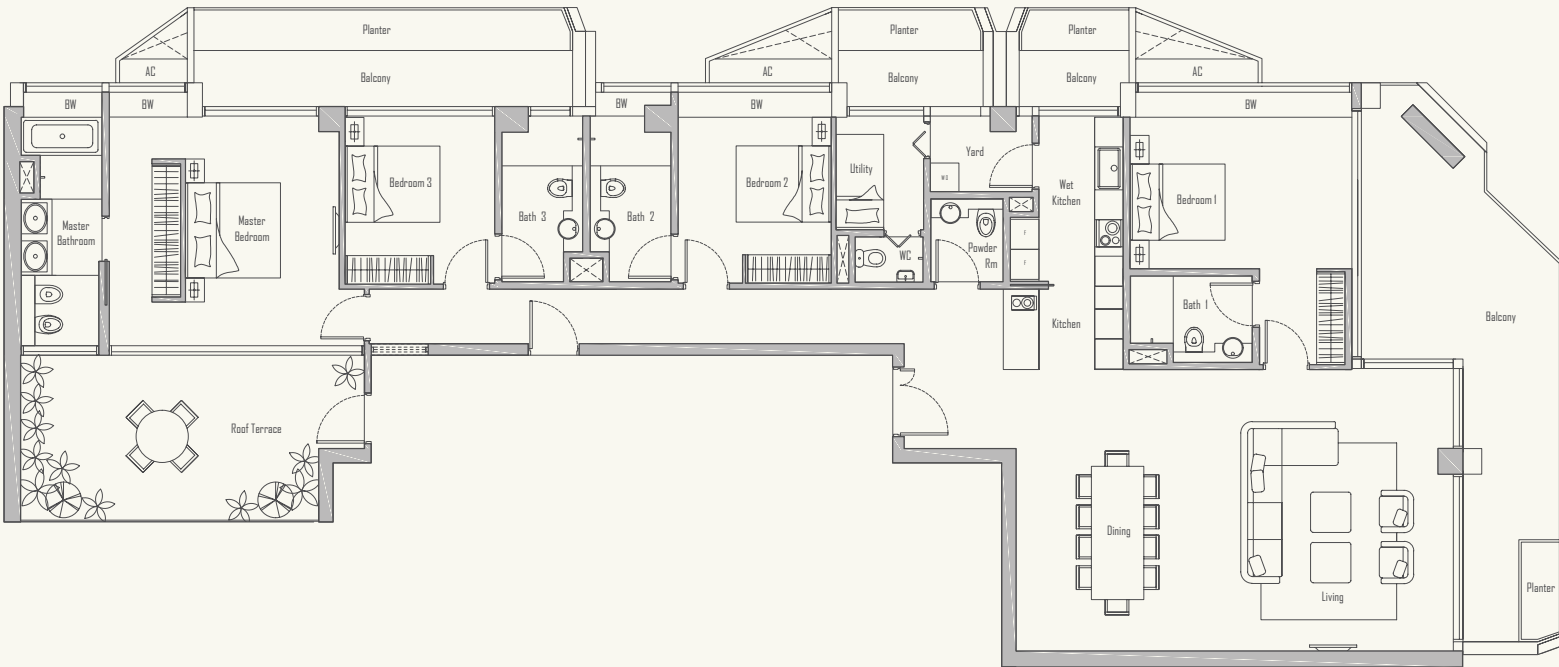
Plans are not drawn to scale and are subject to amendments as may be required or approved by the relevant authorities. All floor areas are approximate and subject to final survey.

PENTHOUSE

TYPE PH4

308 sqm / 3315 sqft

#52-18

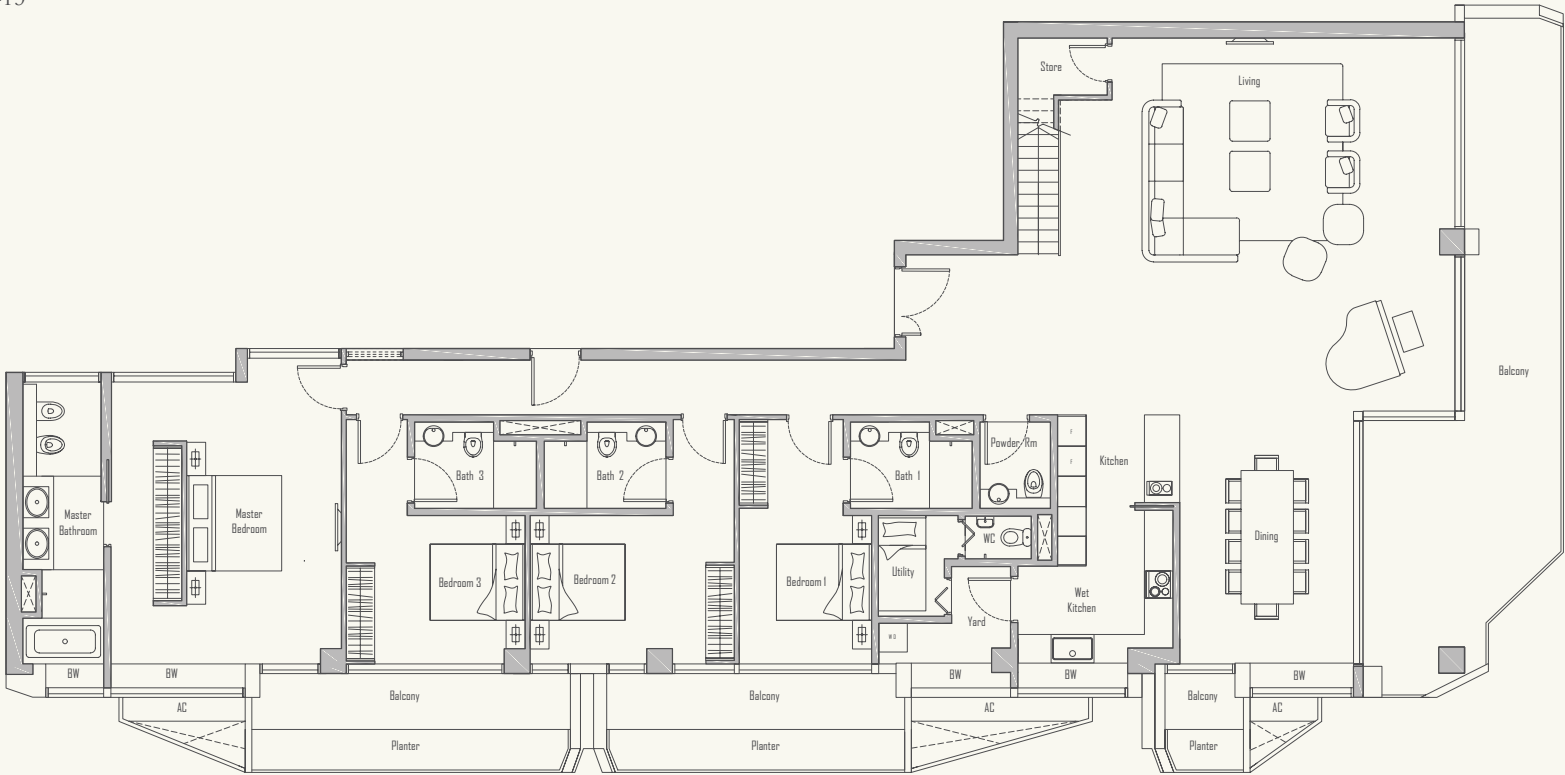


PENTHOUSE

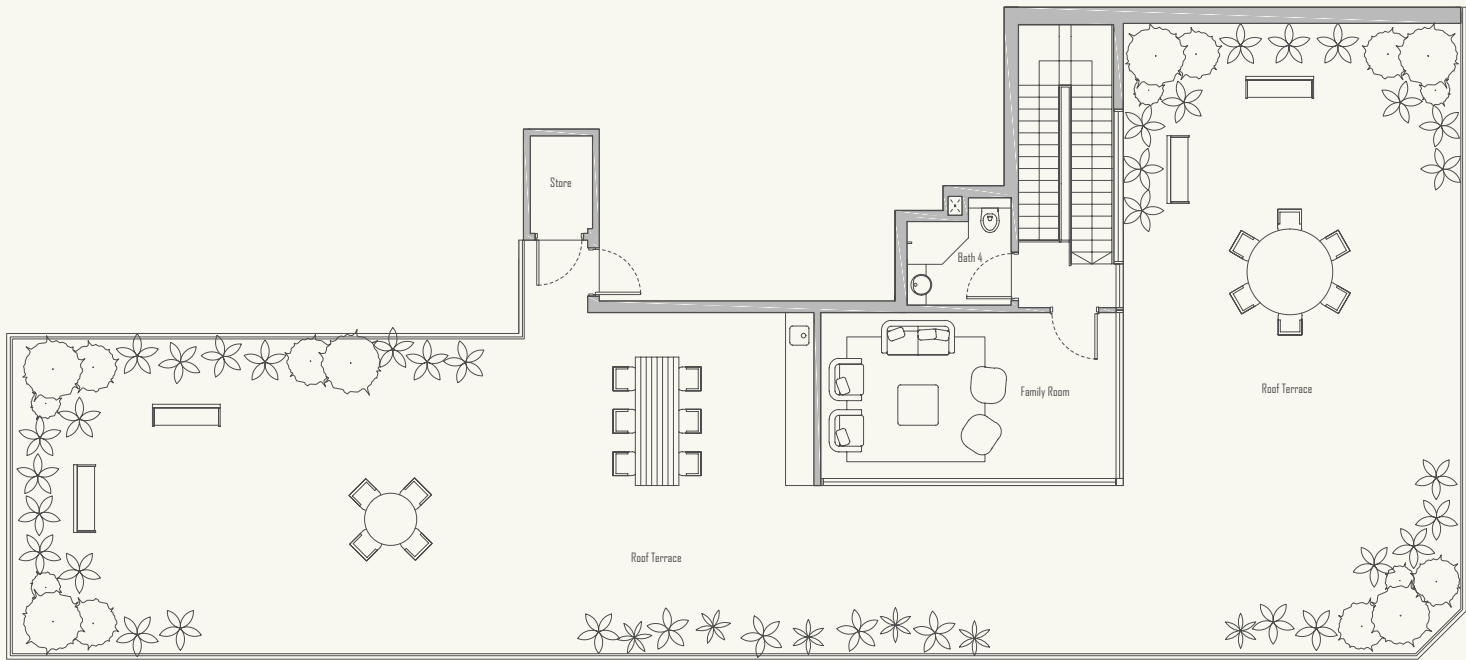
TYPE PH5

633 sqm / 6814 sqft

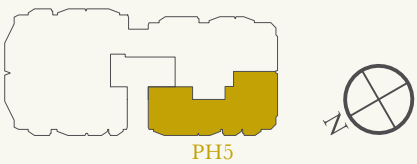
#53-19



Lower Level



Upper Level



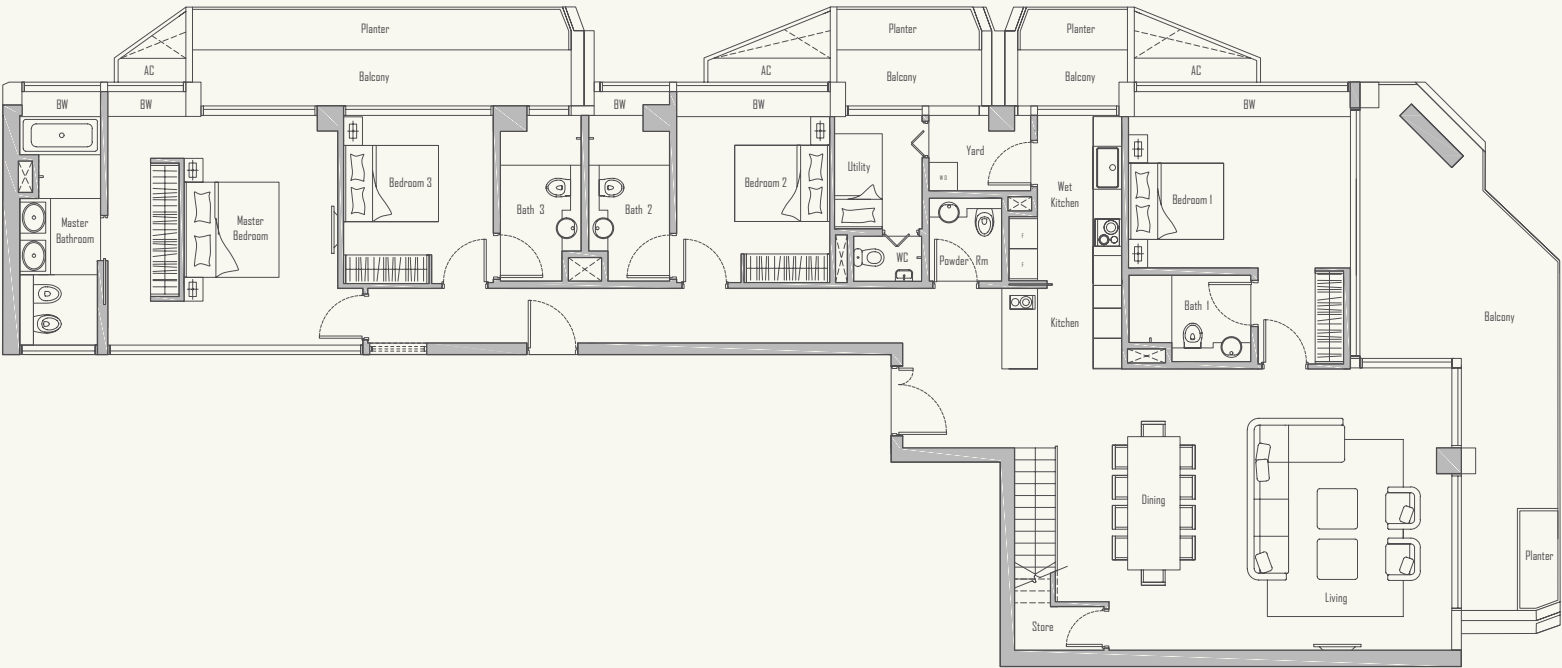
Plans are not drawn to scale and are subject to amendments as may be required or approved by the relevant authorities. All floor areas are approximate and subject to final survey.

PENTHOUSE

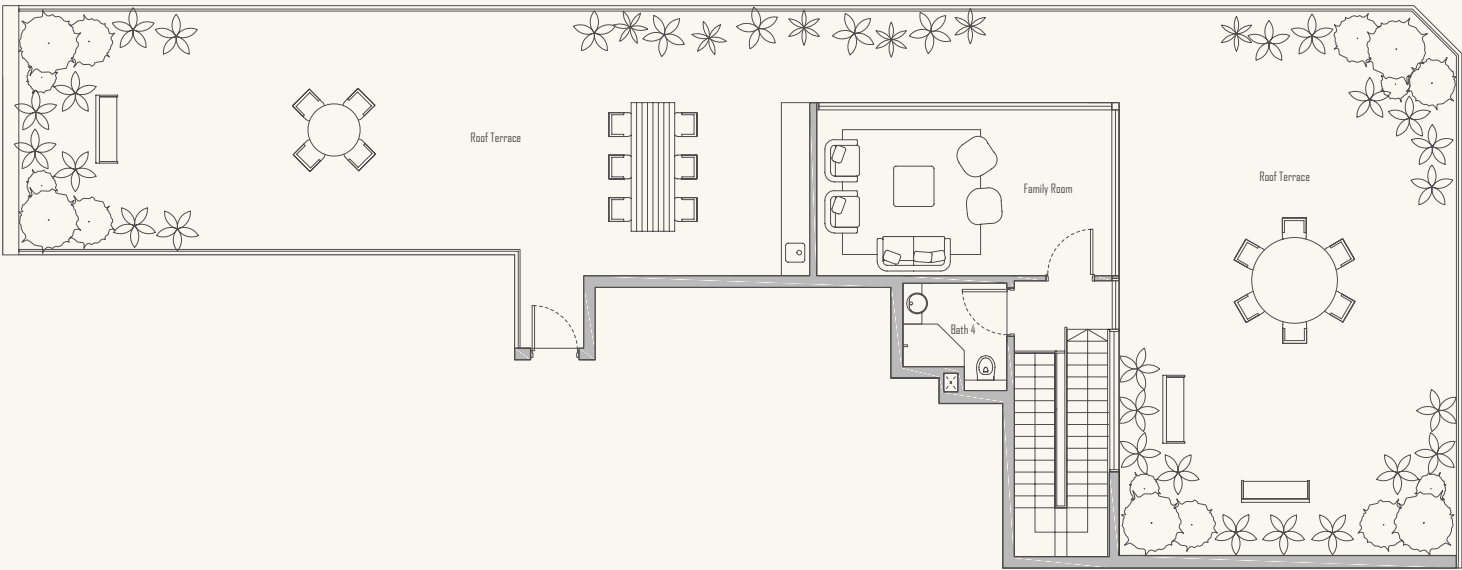
TYPE PH6

514 sqm / 5533 sqft

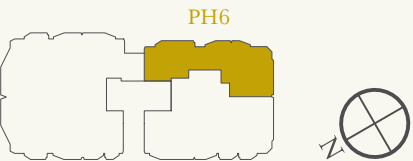
#53-18



Lower Level



Upper Level



For enquiries
6100 1609
www.vonshenton.coS.sg

Developer – UIC Investments (Properties) Pte Ltd (Co. Reg. No. – 198700217C • Developer's License No. – C0911 • Tenure of Land – 99 years wef 29 November 2011 • Location – Lot 00080T TS 30 at 5 Shenton Way •
Expected Date of Vacant Possession – 31 December 2017 • Expected Date of Legal Completion – 31 December 2020

Whilst every care has been taken in the preparation of this brochure and the plans attached, the Developer and its agents shall not be held responsible for any inaccuracies and omissions therein. All visual representations including architectural models, drawings, illustrations, photographs, renderings and other graphic representations portray artist's impressions only and not to be relied upon as statements or representation of facts. All floor areas are approximate measurements only and are subject to final survey. The materials and finishings to be used are subject to changes and availability. All information and specifications are current at the time of publication and are subject to change as may be required and do not form part of an offer or contract. The Sale & Purchase Agreement shall form the entire agreement between the developer and the purchaser, and shall in no way be modified by any statements or representations whether contained in this brochure or given by the developer's agents or otherwise.