

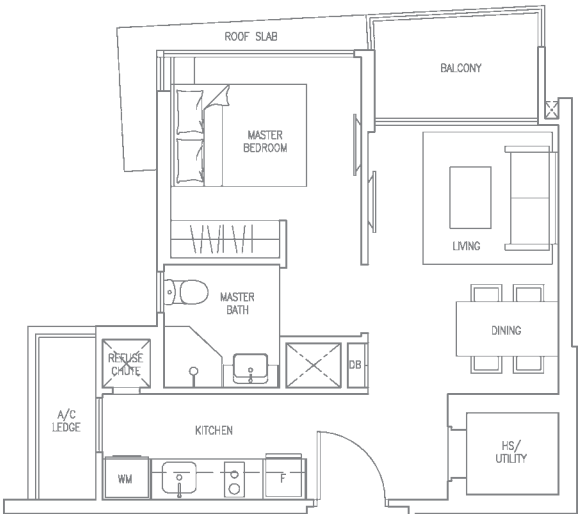


M I L T O N I A

CONDOMINIUM

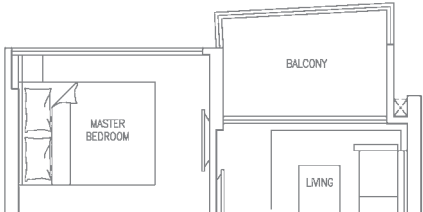
TYPE A1 (1-BEDROOM)

Unit #02-20, #06-20 & #10-20
#02-24, #06-24 & #10-24
#02-26, #06-26 & #10-26
#02-31, #06-31 & #10-31
Area 484 sqft / 45 sqm



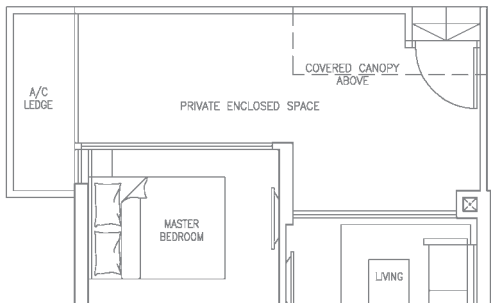
TYPE A1c (1-BEDROOM)

Unit #05-20, #09-20 & #13-20
#05-24, #09-24 & #13-24
#05-26, #09-26 & #13-26
#05-31, #09-31 & #13-31
Area 484 sqft / 45 sqm



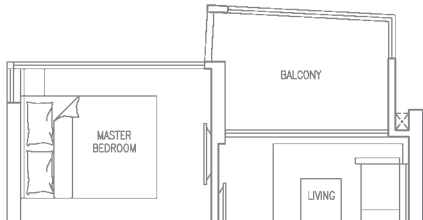
TYPE A1P (1-BEDROOM)

Unit #01-31
Area 592 sqft / 55 sqm



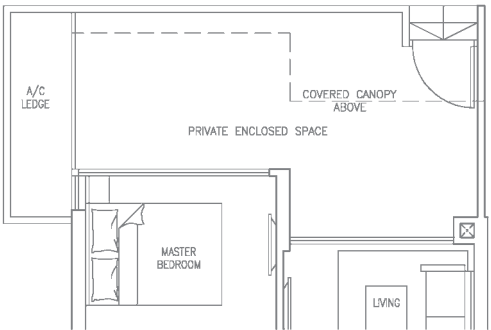
TYPE A1a (1-BEDROOM)

Unit #03-20, #07-20 & #11-20
#03-24, #07-24 & #11-24
#03-26, #07-26 & #11-26
#03-31, #07-31 & #11-31
Area 484 sqft / 45 sqm



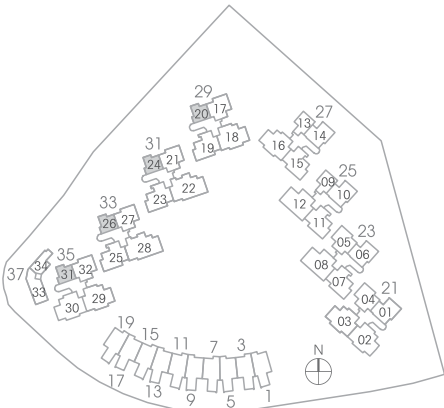
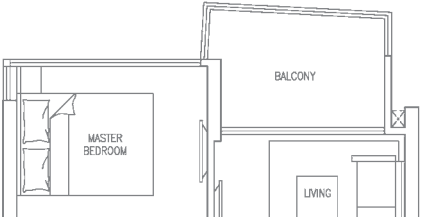
TYPE A1Pa (1-BEDROOM)

Unit #01-20
#01-24
#01-26
Area 624 sqft / 58 sqm



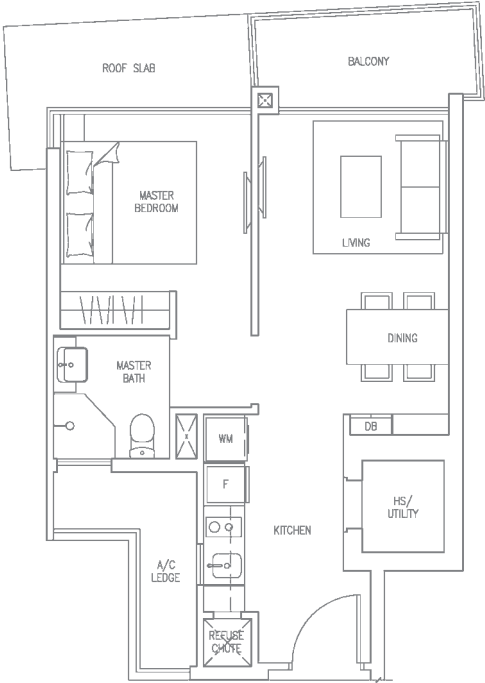
TYPE A1b (1-BEDROOM)

Unit #04-20, #08-20 & #12-20
#04-24, #08-24 & #12-24
#04-26, #08-26 & #12-26
#04-31, #08-31 & #12-31
Area 484 sqft / 45 sqm



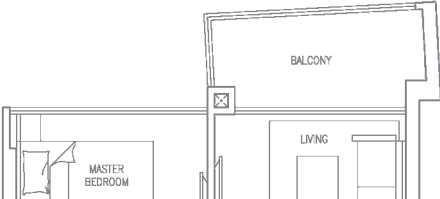
TYPE A2 (1-BEDROOM)

Unit #02-09, #04-09, #06-09, #08-09, #10-09 & #12-09
#02-13, #04-13, #06-13, #08-13, #10-13 & #12-13
Area 527 sqft / 49 sqm



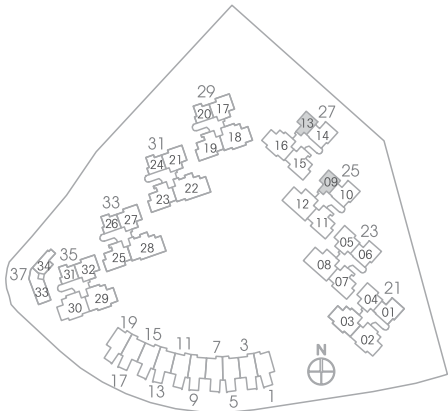
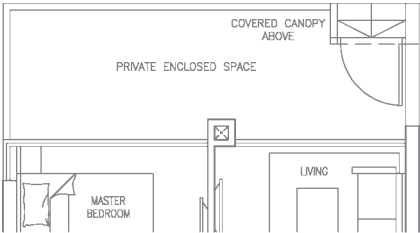
TYPE A2a (1-BEDROOM)

Unit #03-09, #05-09, #07-09, #09-09, #11-09 & #13-09
#03-13, #05-13, #07-13, #09-13, #11-13 & #13-13
Area 527 sqft / 49 sqm



TYPE A2P (1-BEDROOM)

Unit #01-09
#01-13
Area 603 sqft / 56 sqm



The plans are for general guidance only and subject to changes as may be approved by the relevant authority. The floor plans are approximate measurements and subject to final survey.

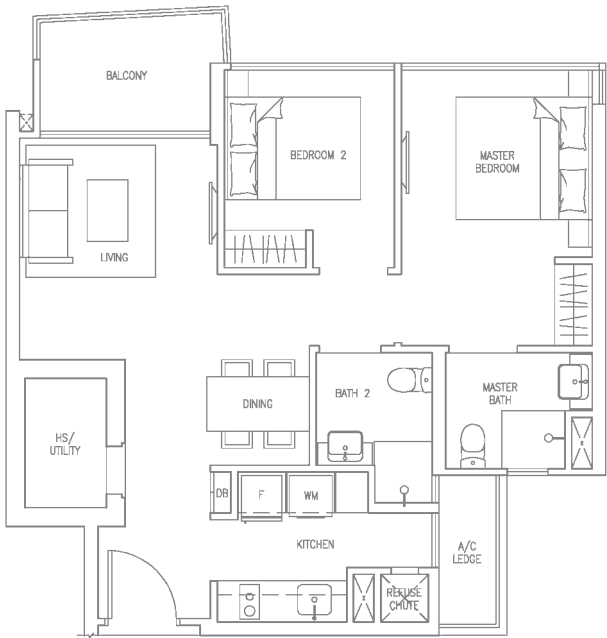
Building Plan no. : A1754-00001-2012-BP01 approved on 25 July 2012

CONDOMINIUM

TYPE B1 (2-BEDROOM)

Unit #02-17, #06-17 & #10-17
#02-21, #06-21 & #10-21
#02-27, #06-27 & #10-27
#02-32, #06-32 & #10-32

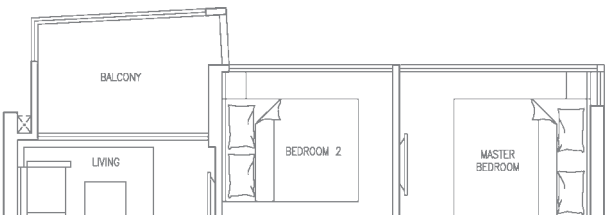
Area 721 sqft / 67 sqm



TYPE B1c (2-BEDROOM)

Unit #05-17, #09-17 & #13-17
#05-21, #09-21 & #13-21
#05-27, #09-27 & #13-27
#05-32, #09-32 & #13-32

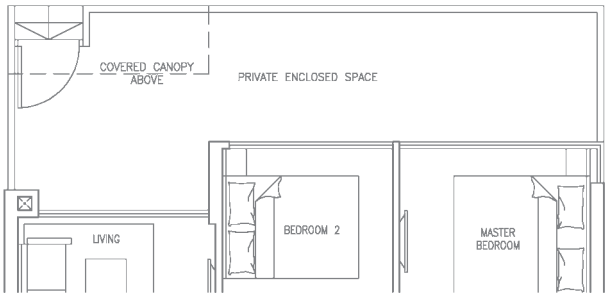
Area 721 sqft / 67 sqm



TYPE B1P (2-BEDROOM)

Unit #01-32

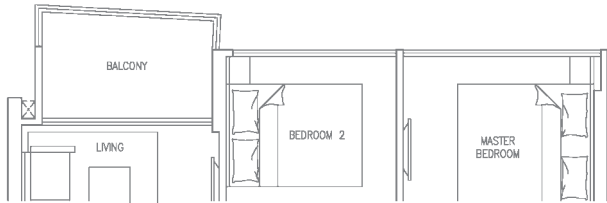
Area 883 sqft / 82 sqm



TYPE B1a (2-BEDROOM)

Unit #03-17, #07-17 & #11-17
#03-21, #07-21 & #11-21
#03-27, #07-27 & #11-27
#03-32, #07-32 & #11-32

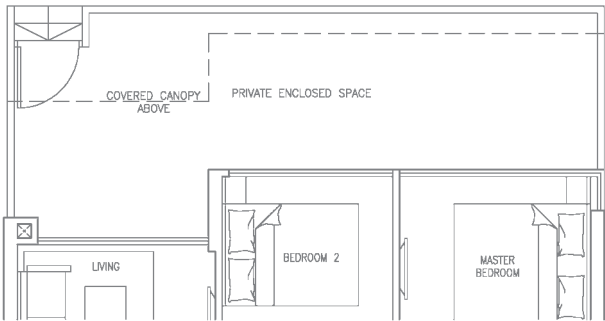
Area 710 sqft / 66 sqm



TYPE B1Pa (2-BEDROOM)

Unit #01-17
#01-21
#01-27

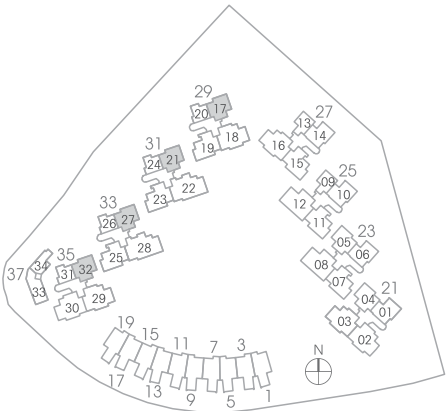
Area 926 sqft / 86 sqm



TYPE B1b (2-BEDROOM)

Unit #04-17, #08-17 & #12-17
#04-21, #08-21 & #12-21
#04-27, #08-27 & #12-27
#04-32, #08-32 & #12-32

Area 710 sqft / 66 sqm

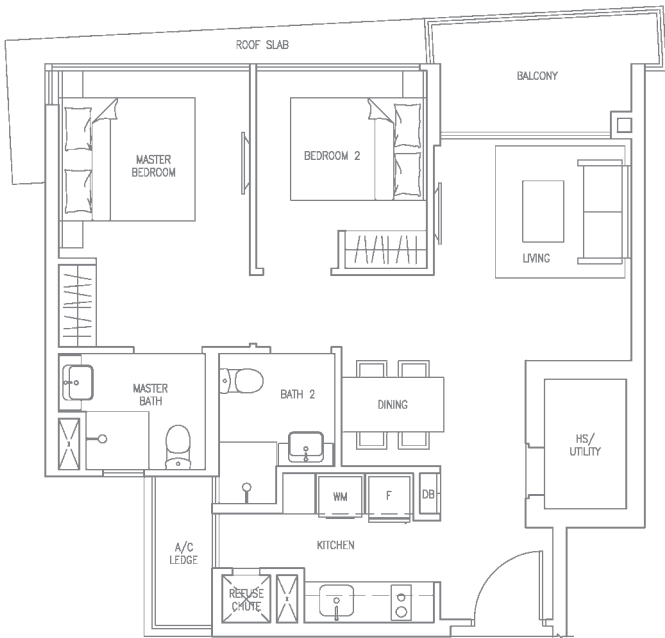


The plans are for general guidance only and subject to changes as may be approved by the relevant authority. The floor plans are approximate measurements and subject to final survey.
Building Plan no. : A1754-00001-2012-BP01 approved on 25 July 2012



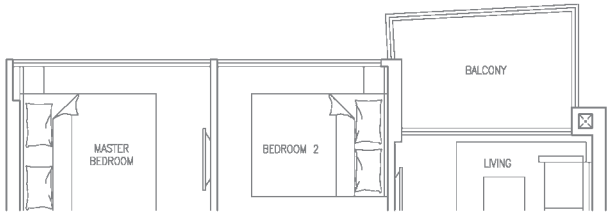
TYPE B1d (2-BEDROOM)

Unit #02-04, #04-04, #06-04, #08-04, #10-04 & #12-04
#02-05, #04-05, #06-05, #08-05, #10-05 & #12-05
Area 721 sqft / 67 sqm



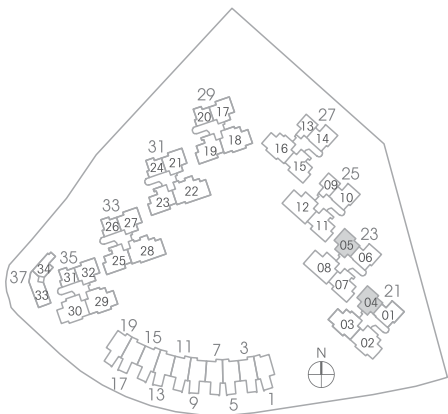
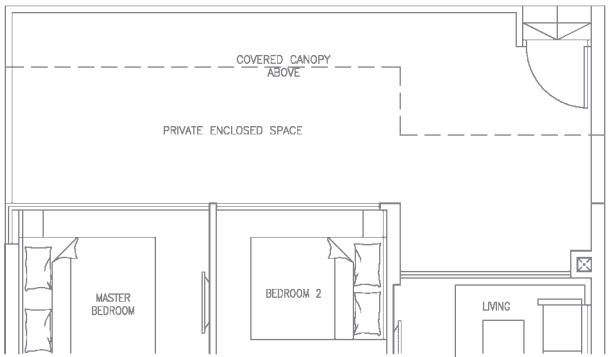
TYPE B1e (2-BEDROOM)

Unit #03-04, #05-04, #07-04, #09-04, #11-04 & #13-04
#03-05, #05-05, #07-05, #09-05, #11-05 & #13-05
Area 721 sqft / 67 sqm



TYPE B1Pb (2-BEDROOM)

Unit #01-04
#01-05
Area 969 sqft / 90 sqm



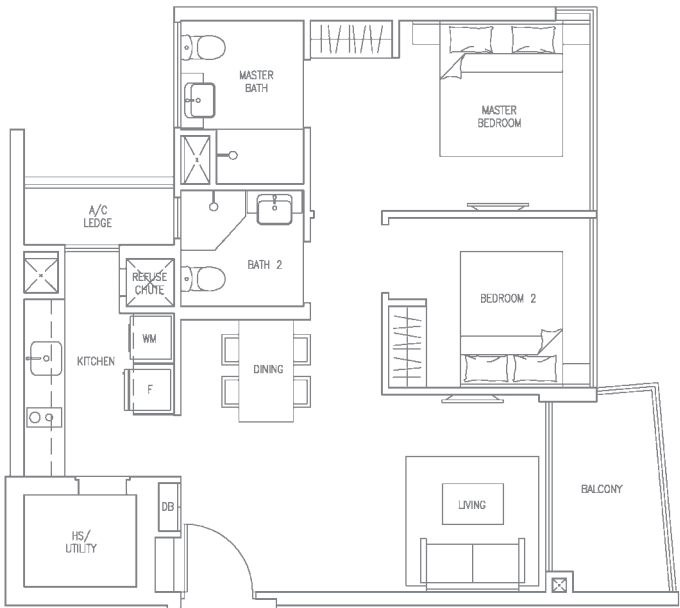
The plans are for general guidance only and subject to changes as may be approved by the relevant authority. The floor plans are approximate measurements and subject to final survey.

Building Plan no. : A1754-00001-2012-BP01 approved on 25 July 2012

CONDOMINIUM

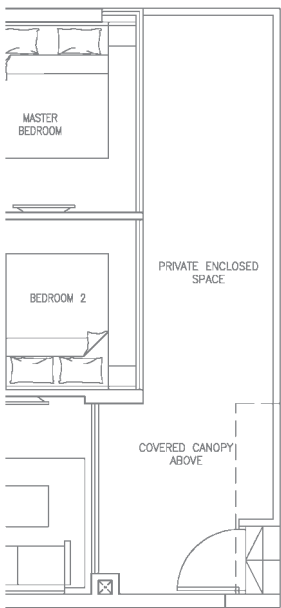
TYPE B2 (2-BEDROOM)

Unit #02-01 to #13-01
#02-06 to #13-06
#02-10 to #13-10
#02-14 to #13-14
Area 743 sqft / 69 sqm

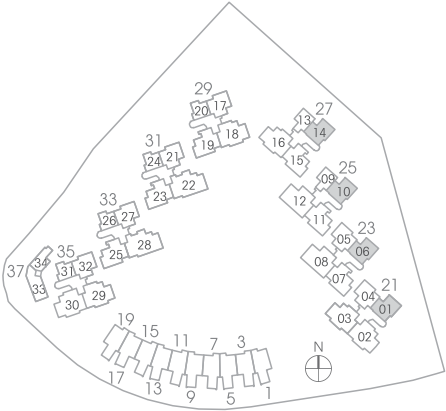


TYPE B2P (2-BEDROOM)

Unit #01-01
#01-06
#01-10
#01-14
Area 893 sqft / 83 sqm

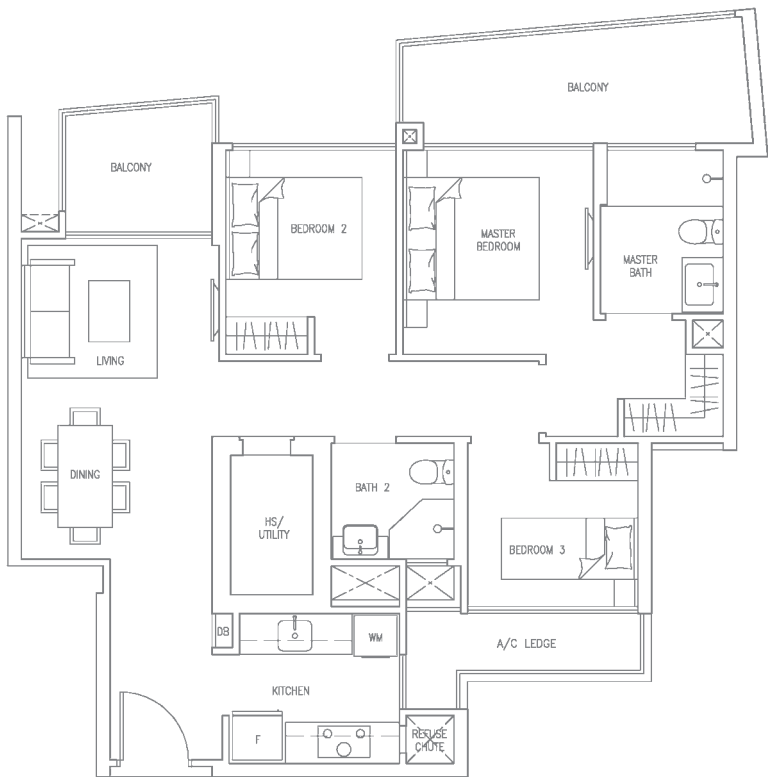


The plans are for general guidance only and subject to changes as may be approved by the relevant authority. The floor plans are approximate measurements and subject to final survey.
Building Plan no. : A1754-00001-2012-BP01 approved on 25 July 2012



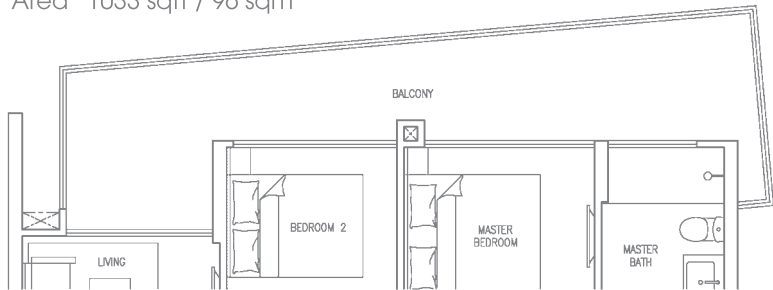
TYPE C1 (3-BEDROOM)

Unit #02-19 to #05-19
#02-23 to #05-23
#02-25 to #05-25
Area 969 sqft / 90 sqm



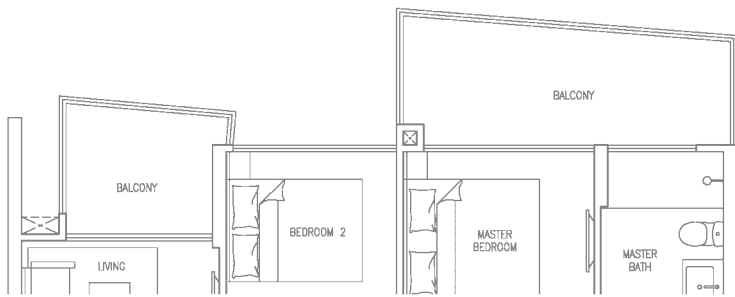
TYPE C1a (3-BEDROOM)

Unit #06-19
#06-23
#06-25
Area 1033 sqft / 96 sqm



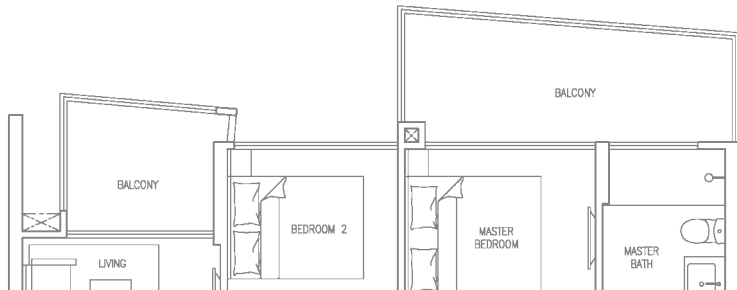
TYPE C1c (3-BEDROOM)

Unit #12-19
Area 969 sqft / 90 sqm



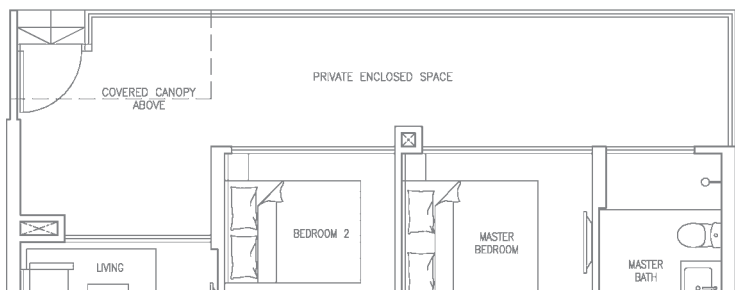
TYPE C1b (3-BEDROOM)

Unit #07-19 to #11-19
#07-23 to #12-23
#07-25 to #12-25
Area 969 sqft / 90 sqm



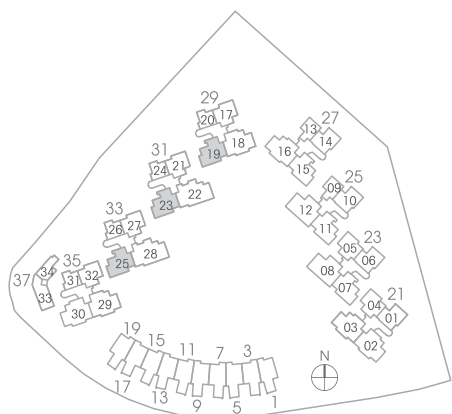
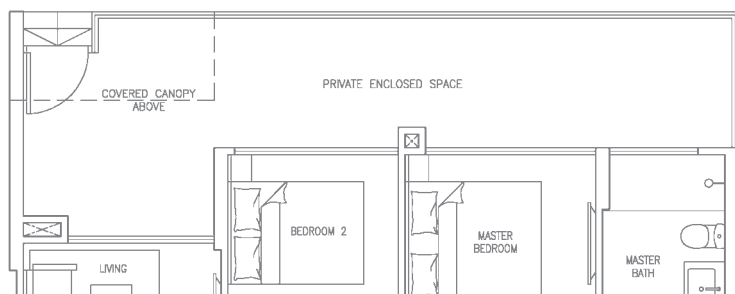
TYPE C1P (3-BEDROOM)

Unit #01-23
#01-25
Area 1098 sqft / 102 sqm



TYPE C1Pa (3-BEDROOM)

Unit #01-19
Area 1098 sqft / 102 sqm



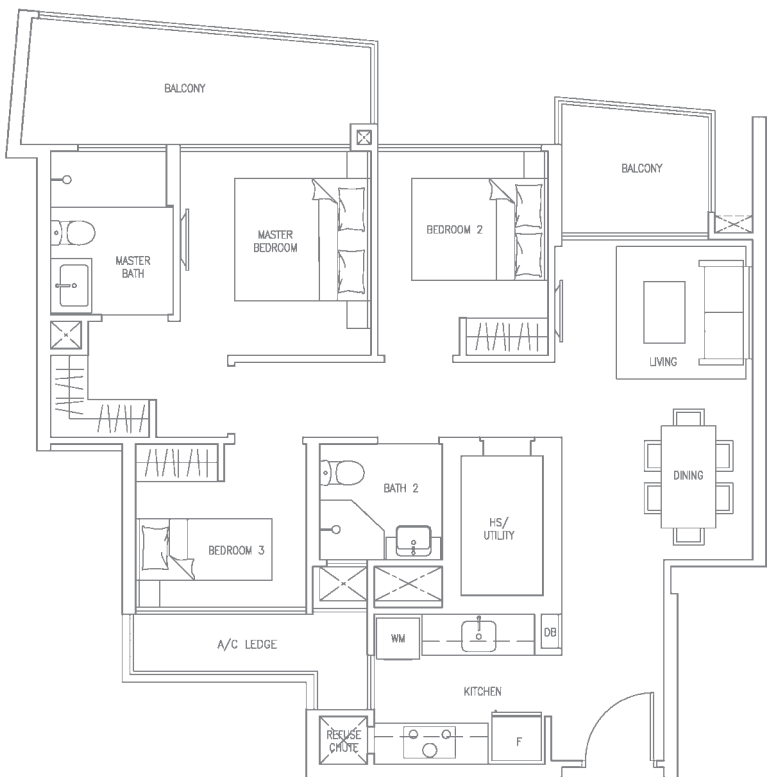
The plans are for general guidance only and subject to changes as may be approved by the relevant authority. The floor plans are approximate measurements and subject to final survey.
Building Plan no. : A1754-00001-2012-BP01 approved on 25 July 2012

CONDOMINIUM

TYPE C1 (3-BEDROOM) MIRRORED

Unit #02-15 to #05-15

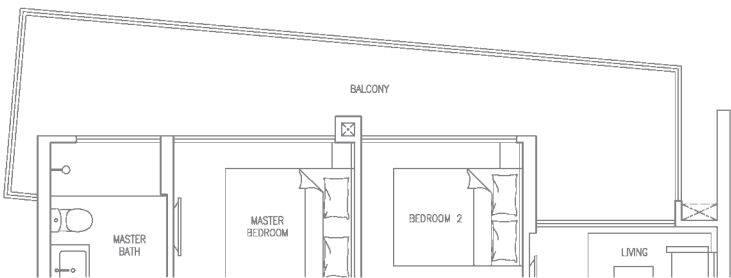
Area 969 sqft / 90 sqm



TYPE C1a (3-BEDROOM) MIRRORED

Unit #06-15

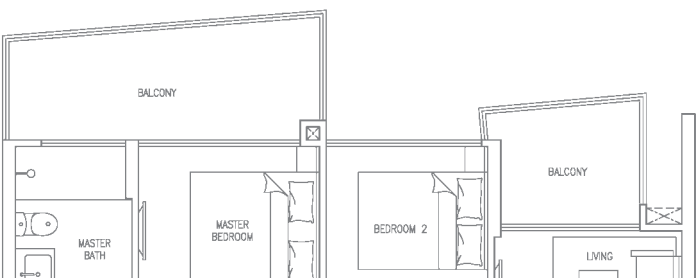
Area 1033 sqft / 96 sqm



TYPE C1c (3-BEDROOM) MIRRORED

Unit #12-15

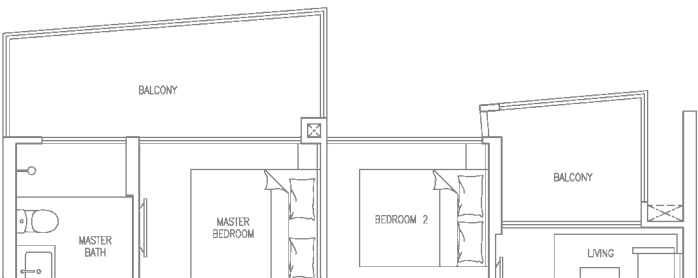
Area 969 sqft / 90 sqm



TYPE C1b (3-BEDROOM) MIRRORED

Unit #07-15 to #11-15

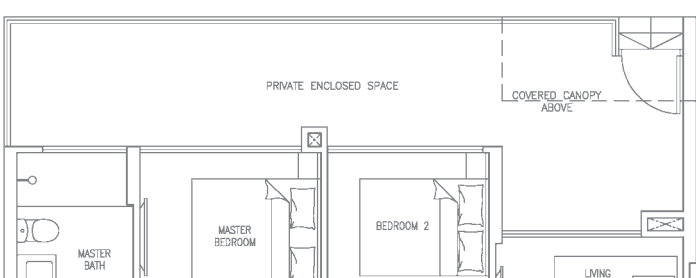
Area 969 sqft / 90 sqm



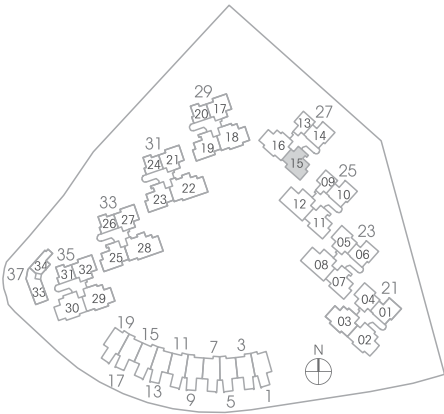
TYPE C1Pa (3-BEDROOM) MIRRORED

Unit #01-15

Area 1098 sqft / 102 sqm



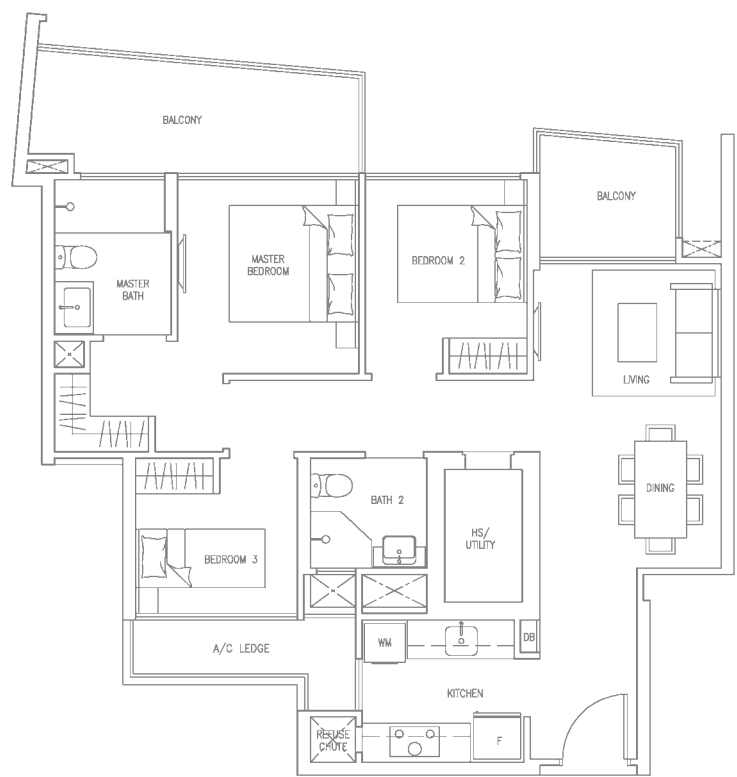
The plans are for general guidance only and subject to changes as may be approved by the relevant authority. The floor plans are approximate measurements and subject to final survey.
Building Plan no. : A1754-00001-2012-BP01 approved on 25 July 2012



TYPE C1d (3-BEDROOM)

Unit #02-07 to #05-07
#02-11 to #05-11

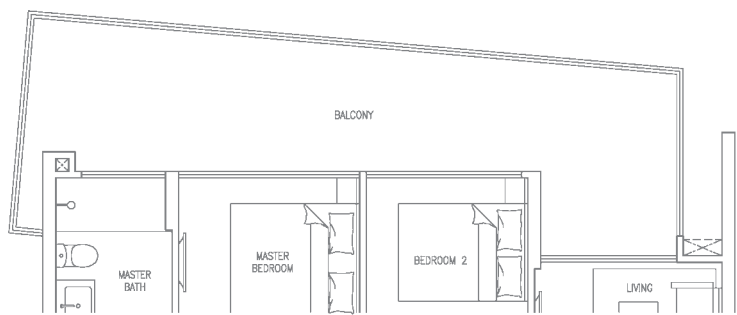
Area 969 sqft / 90 sqm



TYPE C1e (3-BEDROOM)

Unit #06-07
#06-11

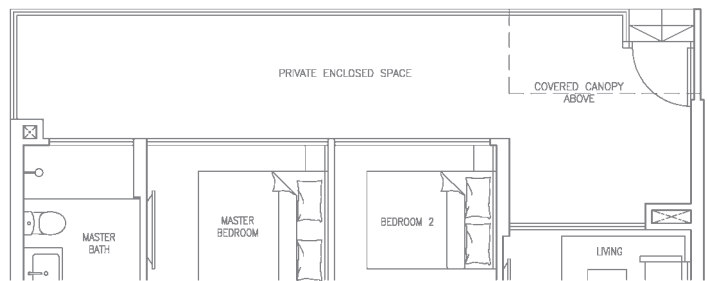
Area 1087 sqft / 101 sqm



TYPE C1Pb (3-BEDROOM)

Unit #01-07
#01-11

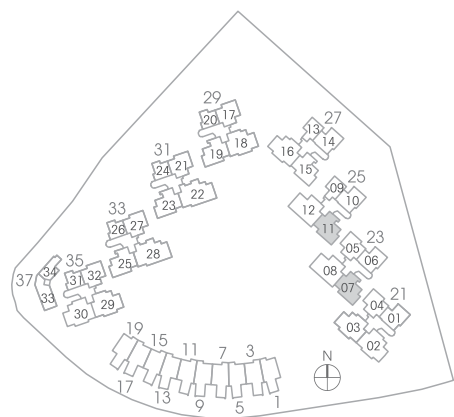
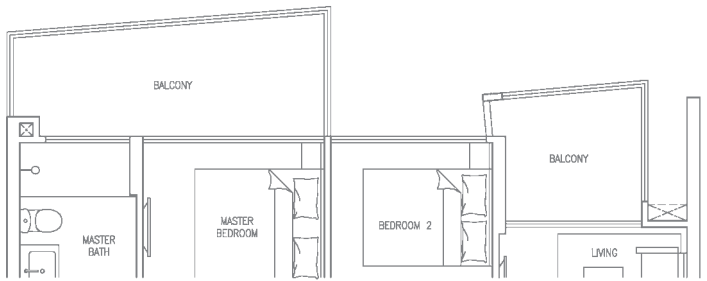
Area 1098 sqft / 102 sqm



TYPE C1f (3-BEDROOM)

Unit #07-07 to #12-07
#07-11 to #12-11

Area 969 sqft / 90 sqm



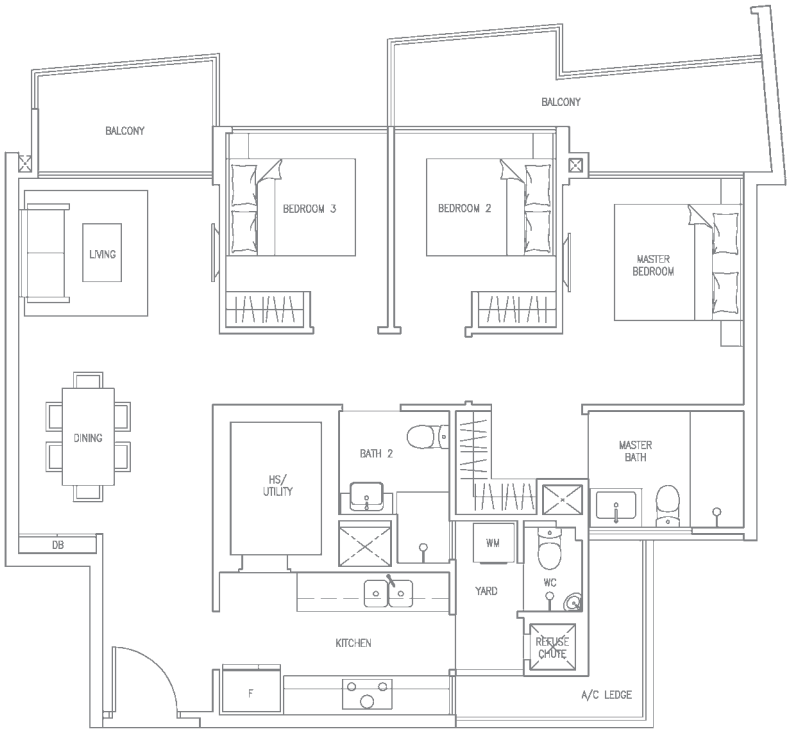
The plans are for general guidance only and subject to changes as may be approved by the relevant authority. The floor plans are approximate measurements and subject to final survey.

Building Plan no. : A1754-00001-2012-BP01 approved on 25 July 2012

CONDOMINIUM

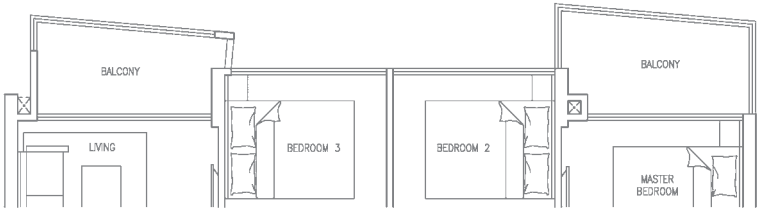
TYPE C2 (3-BEDROOM)

Unit #07-03 to #12-03
#02-30 to #05-30
Area 1130 sqft / 105 sqm



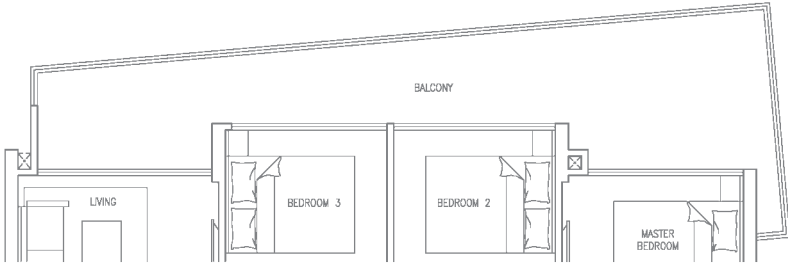
TYPE C2a (3-BEDROOM)

Unit #02-03 to #05-03
#07-30 to #12-30
Area 1076 sqft / 100 sqm



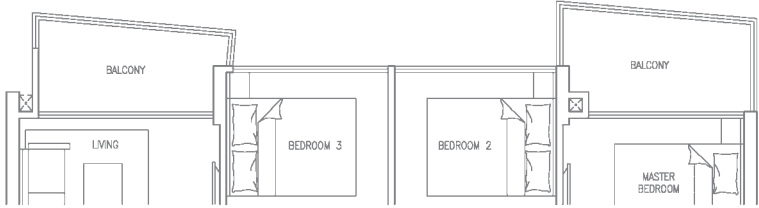
TYPE C2b (3-BEDROOM)

Unit #06-30
Area 1206 sqft / 112 sqm



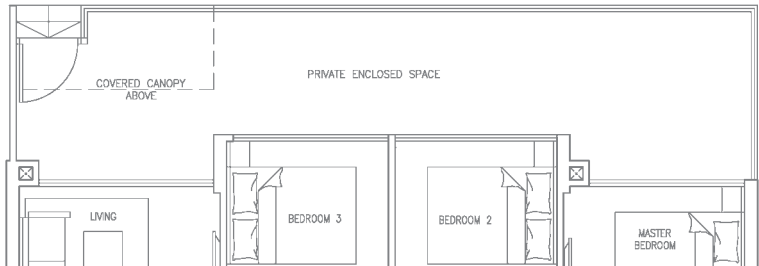
TYPE C2c (3-BEDROOM)

Unit #06-03
Area 1076 sqft / 100 sqm

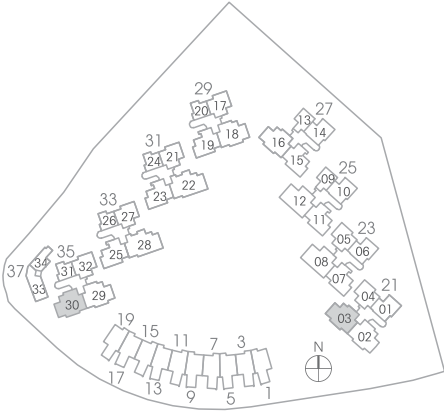


TYPE C2P (3-BEDROOM)

Unit #01-30
Area 1270 sqft / 118 sqm



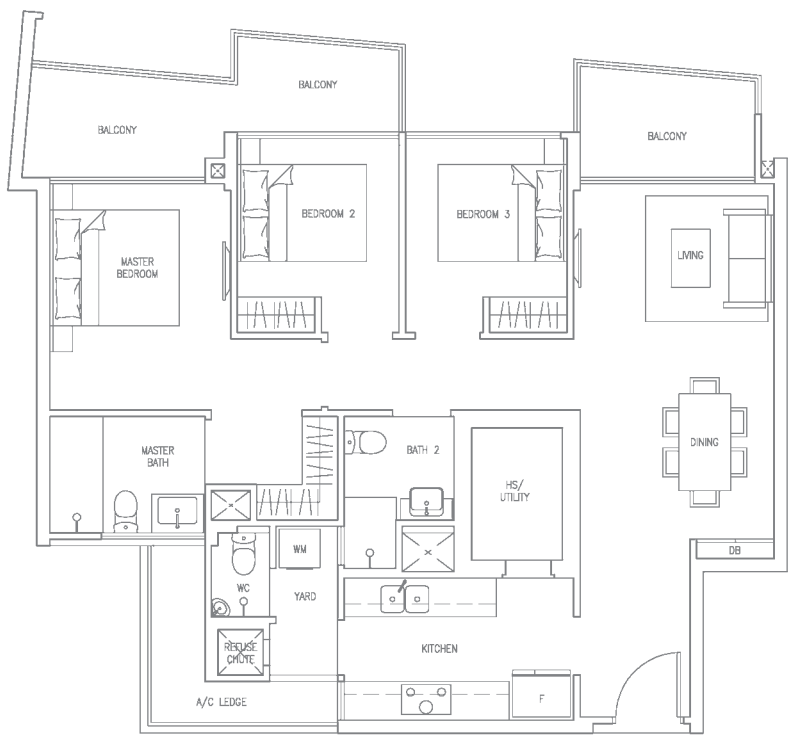
The plans are for general guidance only and subject to changes as may be approved by the relevant authority. The floor plans are approximate measurements and subject to final survey.
Building Plan no. : A1754-00001-2012-BP01 approved on 25 July 2012



TYPE C2 (3-BEDROOM) MIRRORED

Unit #02-02 to #05-02
#07-29 to #12-29

Area 1130 sqft / 105 sqm



TYPE C2a (3-BEDROOM) MIRRORED

Unit #07-02 to #12-02
#02-29 to #05-29

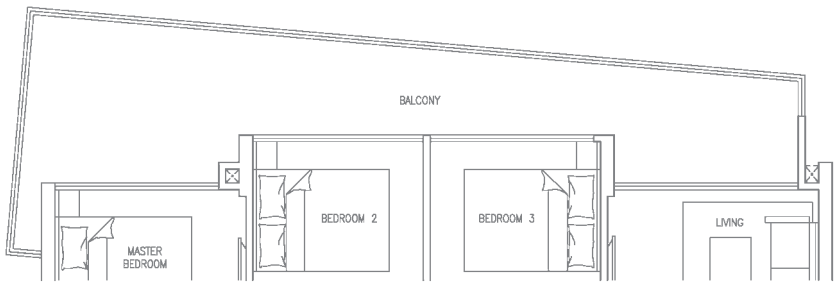
Area 1076 sqft / 100 sqm



TYPE C2b (3-BEDROOM) MIRRORED

Unit #06-02

Area 1206 sqft / 112 sqm



TYPE C2c (3-BEDROOM) MIRRORED

Unit #06-29

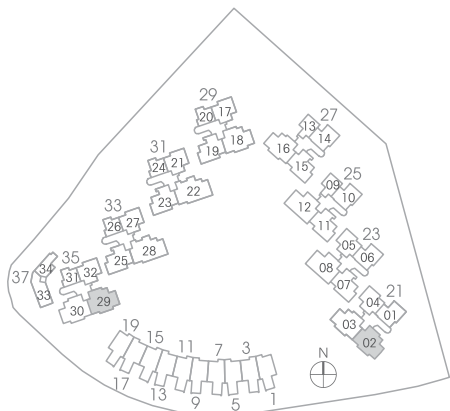
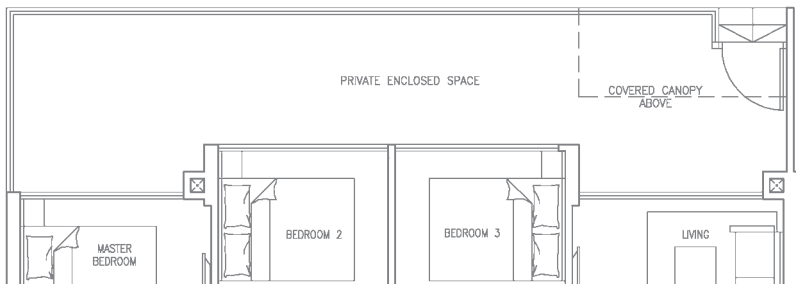
Area 1076 sqft / 100 sqm



TYPE C2P (3-BEDROOM) MIRRORED

Unit #01-29

Area 1270 sqft / 118 sqm



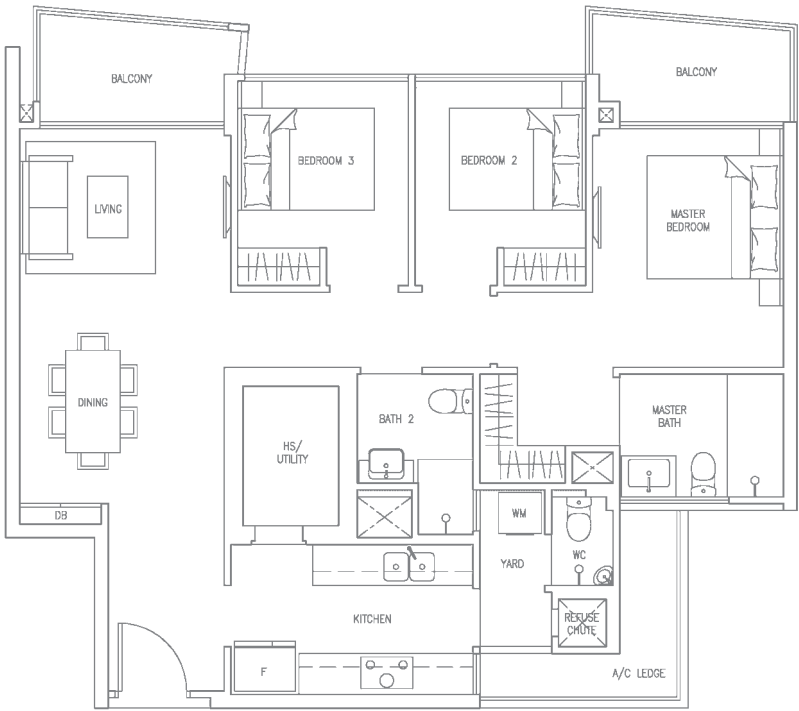
The plans are for general guidance only and subject to changes as may be approved by the relevant authority. The floor plans are approximate measurements and subject to final survey.

Building Plan no. : A1754-00001-2012-BP01 approved on 25 July 2012

CONDOMINIUM

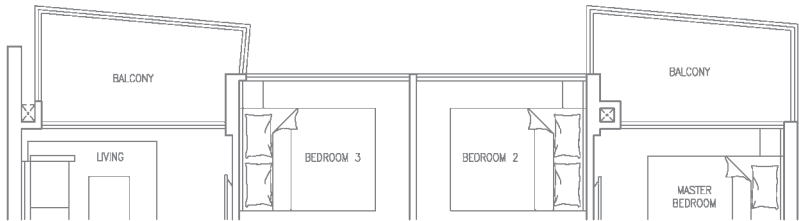
TYPE C2d (3-BEDROOM)

Unit #03-16 to #05-16
Area 1076 sqft / 100 sqm



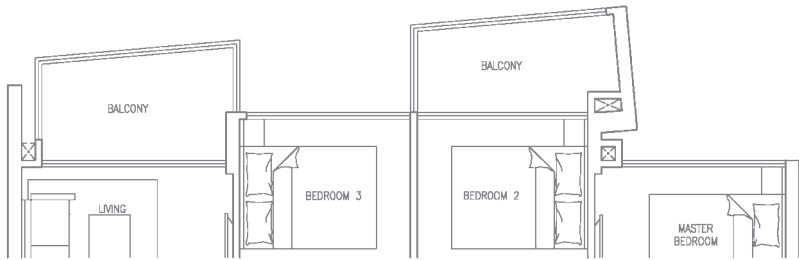
TYPE C2e (3-BEDROOM)

Unit #06-16
Area 1076 sqft / 100 sqm



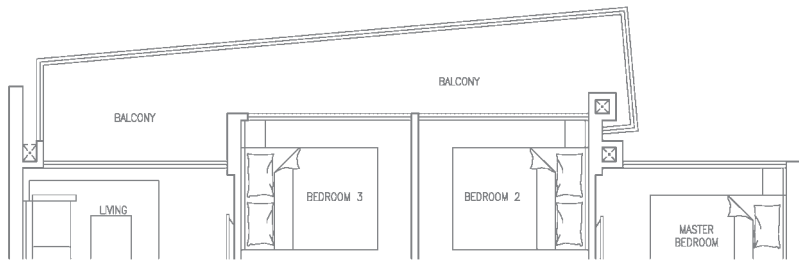
TYPE C2f (3-BEDROOM)

Unit #07-16 to #11-16
Area 1076 sqft / 100 sqm



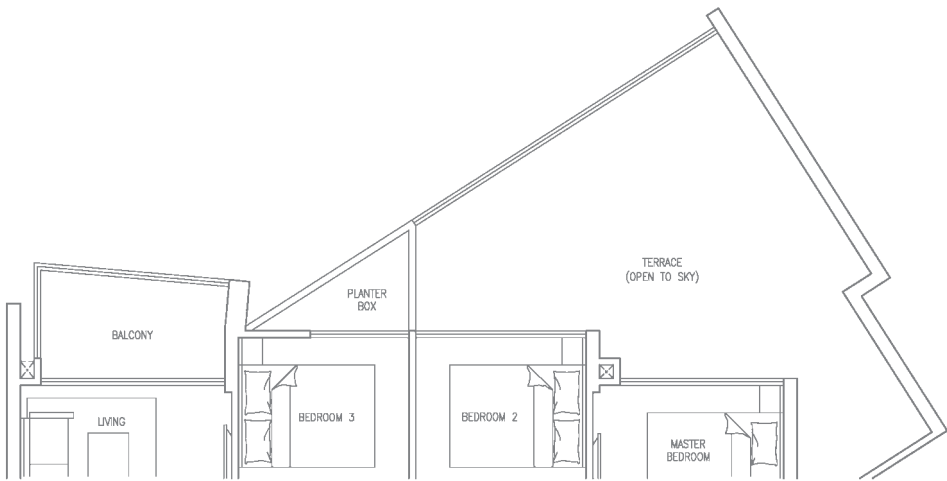
TYPE C2g (3-BEDROOM)

Unit #12-16
Area 1109 sqft / 103 sqm

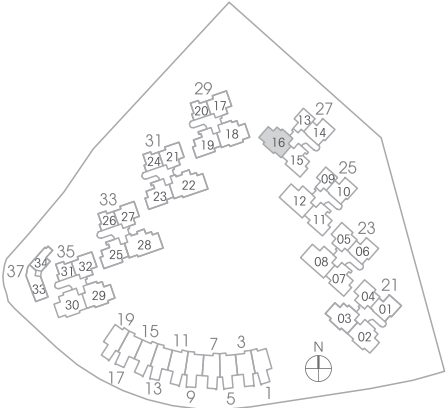


TYPE C2j (3-BEDROOM)

Unit #02 -16
Area 1335 sqft / 124 sqm

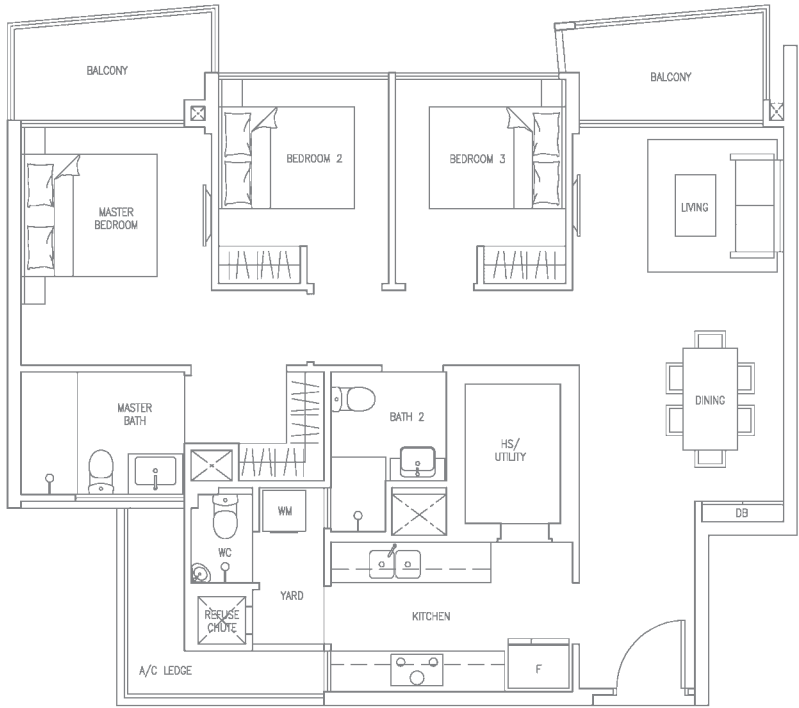


The plans are for general guidance only and subject to changes as may be approved by the relevant authority. The floor plans are approximate measurements and subject to final survey.
Building Plan no. : A1754-00001-2012-BP01 approved on 25 July 2012



TYPE C2d (3-BEDROOM) MIRRORED

Unit #03-18 to #05-18
Area 1076 sqft / 100 sqm



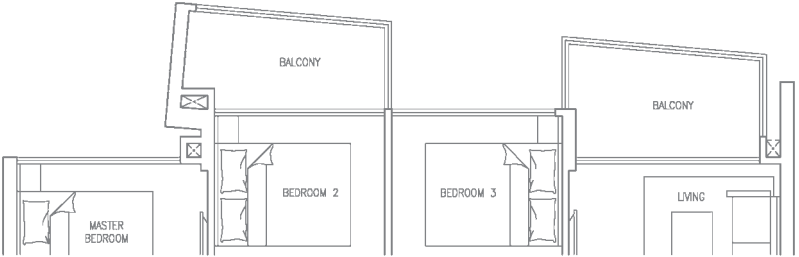
TYPE C2e (3-BEDROOM) MIRRORED

Unit #06-18
Area 1076 sqft / 100 sqm



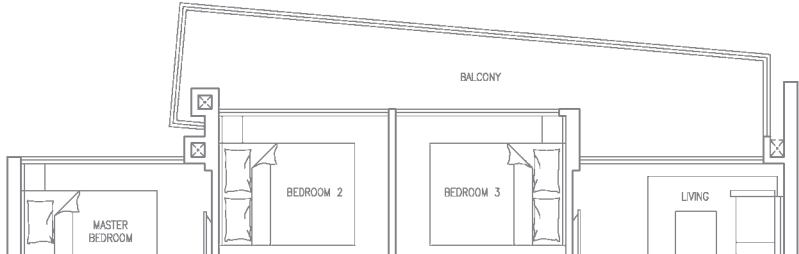
TYPE C2f (3-BEDROOM) MIRRORED

Unit #07-18 to #11-18
Area 1076 sqft / 100 sqm



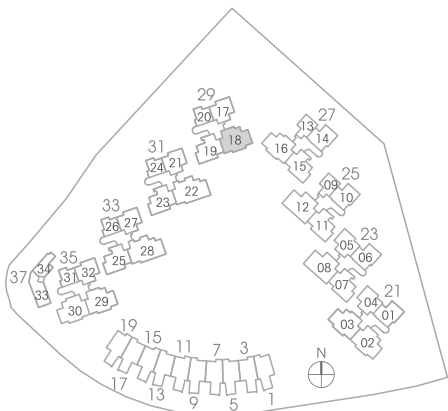
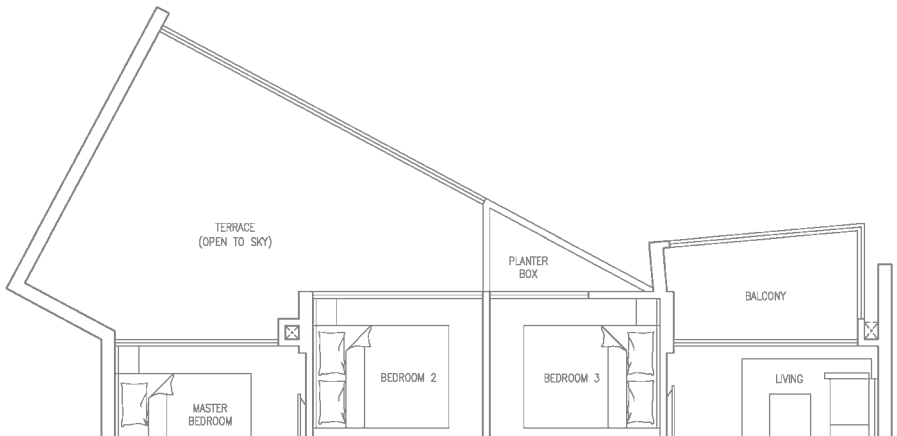
TYPE C2g (3-BEDROOM) MIRRORED

Unit #12-18
Area 1109 sqft / 103 sqm



TYPE C2h (3-BEDROOM) MIRRORED

Unit #02 -18
Area 1259 sqft / 117 sqm



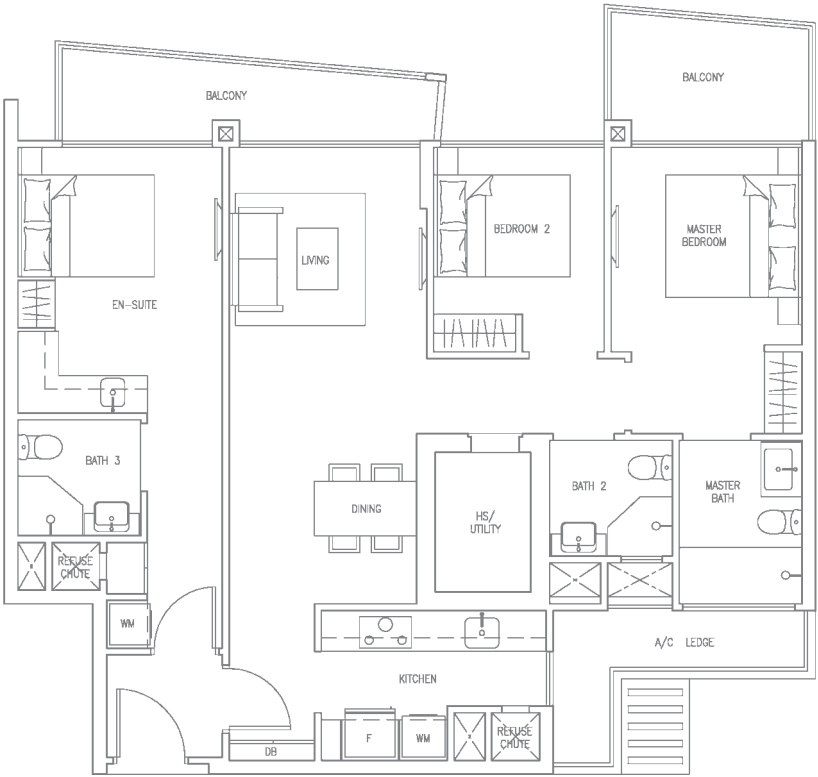
The plans are for general guidance only and subject to changes as may be approved by the relevant authority. The floor plans are approximate measurements and subject to final survey.

Building Plan no. : A1754-00001-2012-BP01 approved on 25 July 2012

CONDOMINIUM

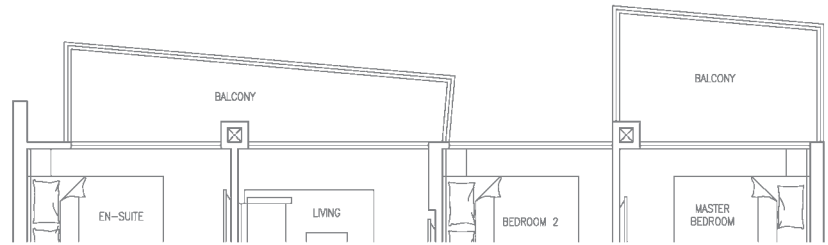
TYPE C3 (3-BEDROOM - DUAL KEY)

Unit #02-08 to #05-08
#02-12 to #05-12
Area 1173 sqft / 109 sqm



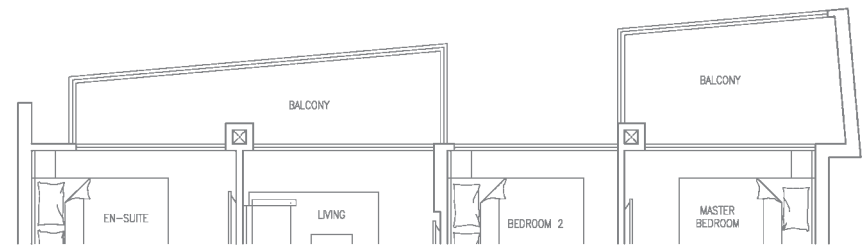
TYPE C3a (3-BEDROOM - DUAL KEY)

Unit #06-08
#06-12
Area 1173 sqft / 109 sqm



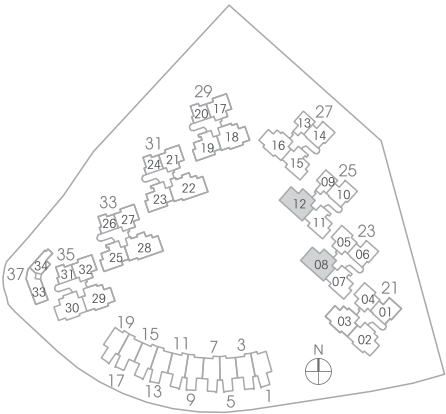
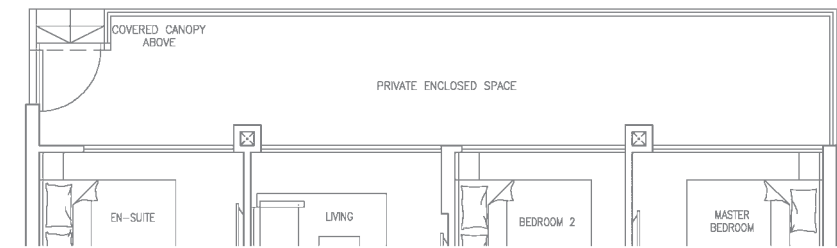
TYPE C3b (3-BEDROOM - DUAL KEY)

Unit #07-08 to #12-08
#07-12 to #12-12
Area 1184 sqft / 110 sqm



TYPE C3P (3-BEDROOM - DUAL KEY)

Unit #01-08
#01-12
Area 1302 sqft / 121 sqm

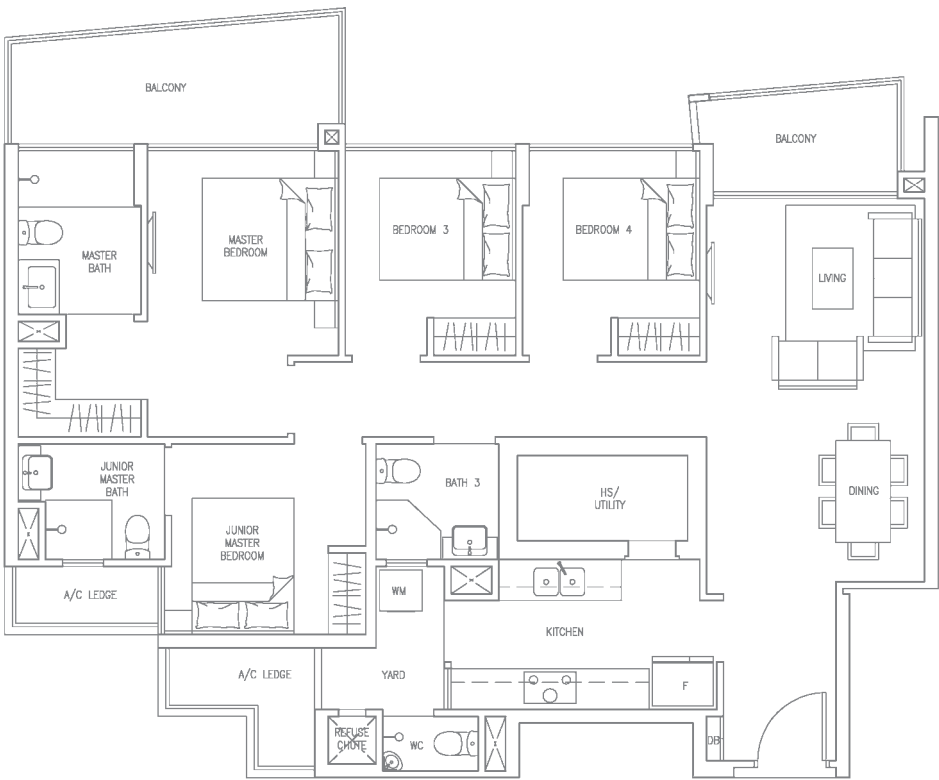


The plans are for general guidance only and subject to changes as may be approved by the relevant authority. The floor plans are approximate measurements and subject to final survey.
Building Plan no. : A1754-00001-2012-BP01 approved on 25 July 2012



TYPE D1 (4-BEDROOM)

Unit #02-22 to #05-22
#02-28 to #05-28
Area 1313 sqft / 122 sqm



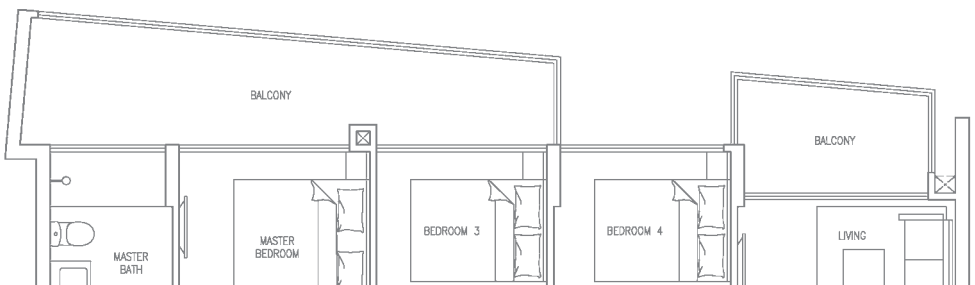
TYPE D1a (4-BEDROOM)

Unit #06-22
#06-28
Area 1313 sqft / 122 sqm



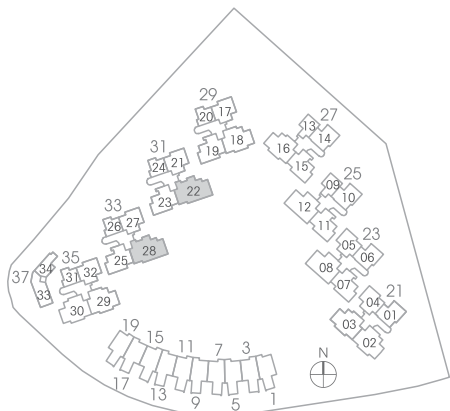
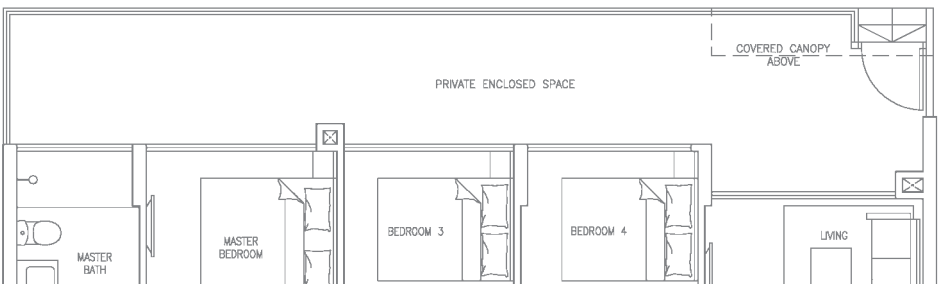
TYPE D1b (4-BEDROOM)

Unit #07-22 to #12-22
#07-28 to #12-28
Area 1356 sqft / 126 sqm



TYPE D1P (4-BEDROOM)

Unit #01-22
#01-28
Area 1485 sqft / 138 sqm



The plans are for general guidance only and subject to changes as may be approved by the relevant authority. The floor plans are approximate measurements and subject to final survey.

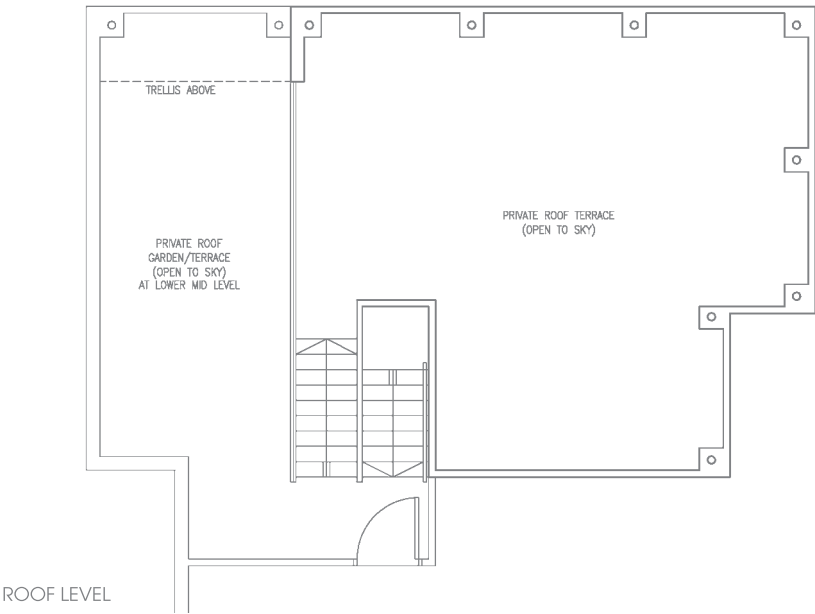
Building Plan no. : A1754-00001-2012-BP01 approved on 25 July 2012

PENTHOUSE

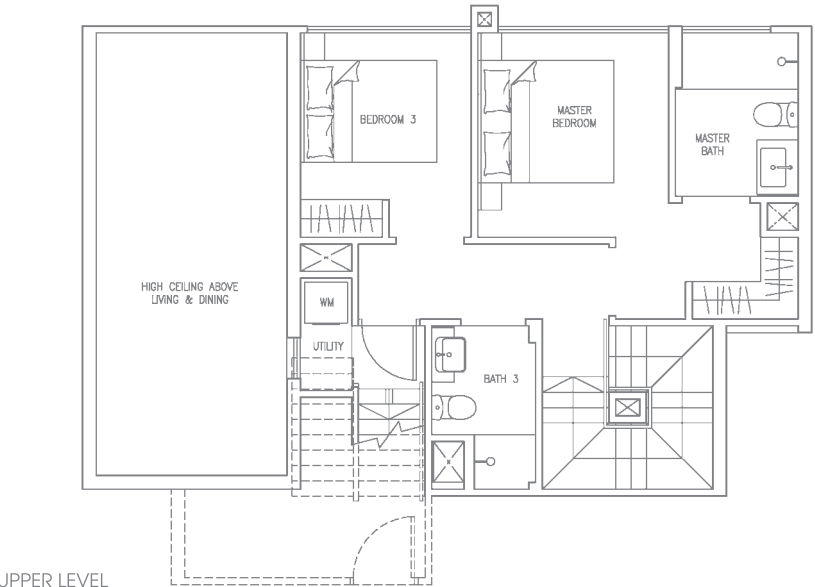
TYPE C1PH (3-BEDROOM)

Unit #13-23
#13-25

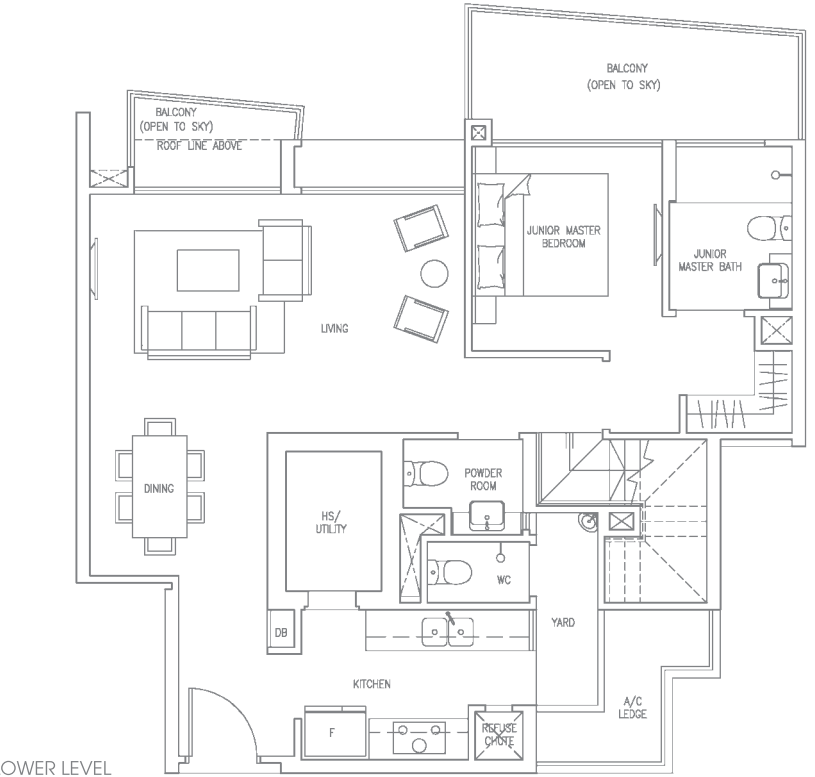
Area 2551 sqft / 237 sqm



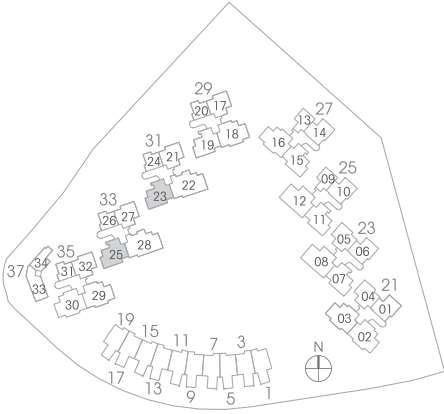
ROOF LEVEL



UPPER LEVEL



LOWER LEVEL



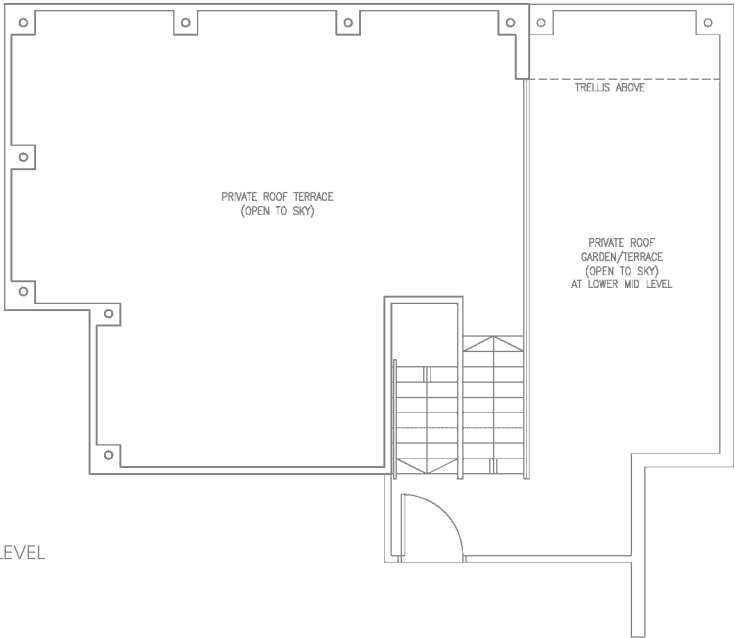
The plans are for general guidance only and subject to changes as may be approved by the relevant authority. The floor plans are approximate measurements and subject to final survey.
Building Plan no. : A1754-00001-2012-BP01 approved on 25 July 2012



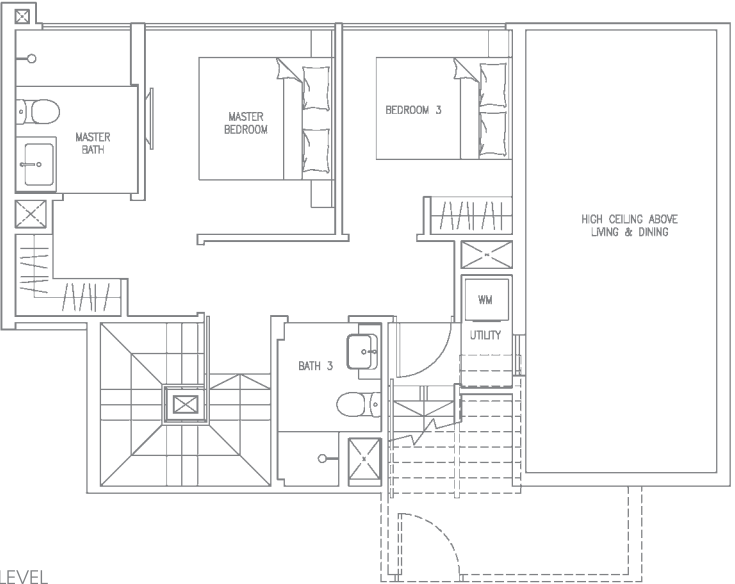
TYPE C1PHa (3-BEDROOM)

Unit #13-07
#13-11

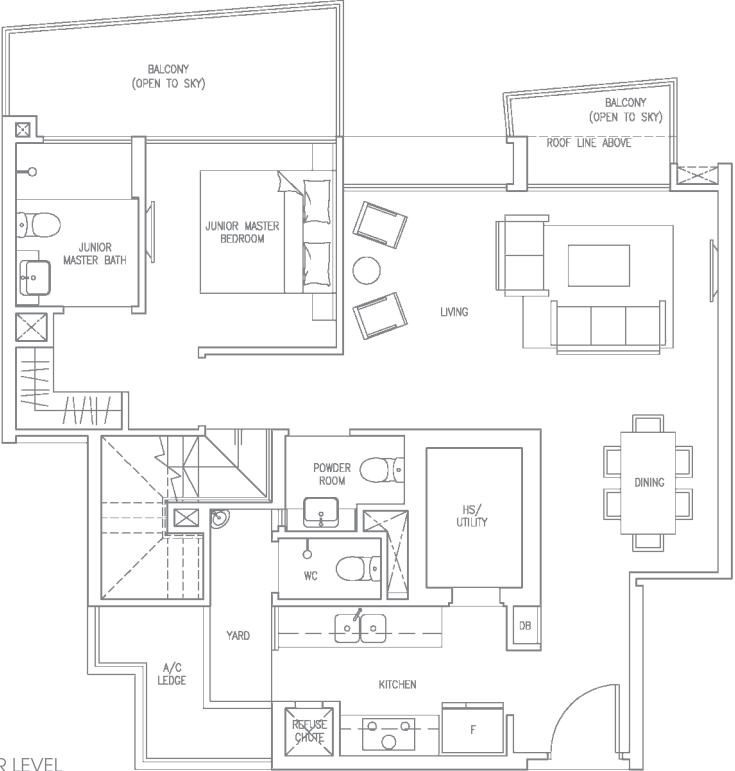
Area 2562 sqft / 238 sqm



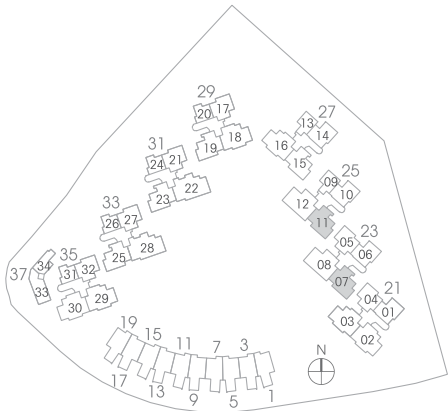
ROOF LEVEL



UPPER LEVEL



LOWER LEVEL



The plans are for general guidance only and subject to changes as may be approved by the relevant authority. The floor plans are approximate measurements and subject to final survey.

Building Plan no. : A1754-00001-2012-BP01 approved on 25 July 2012

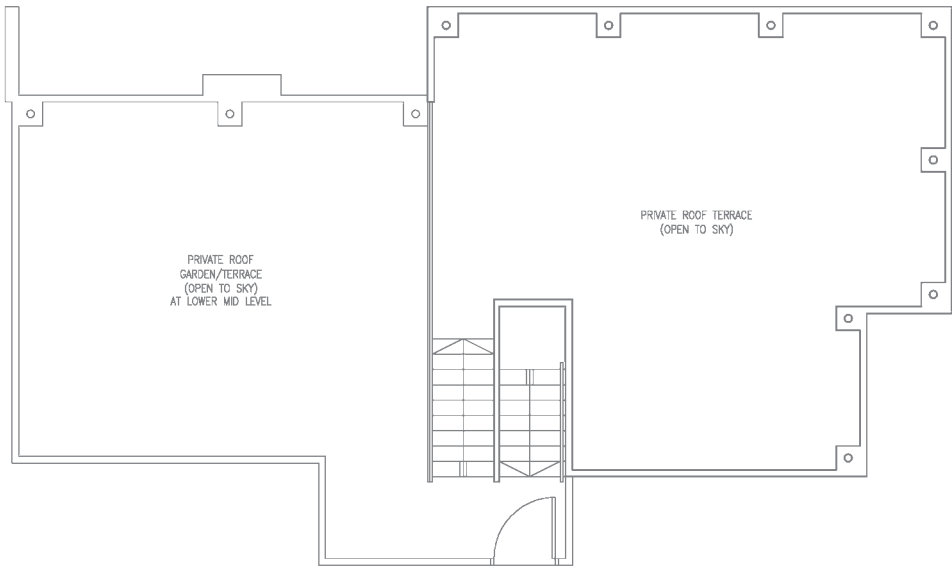
PENTHOUSE

TYPE C1PHb (4-BEDROOM)

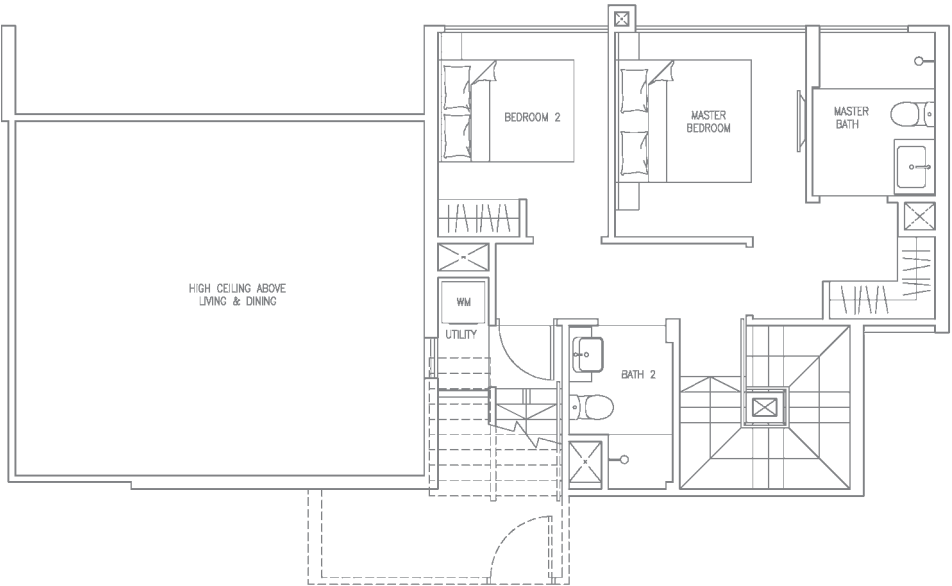
Unit #13-18

Area 3025 sqft / 281 sqm

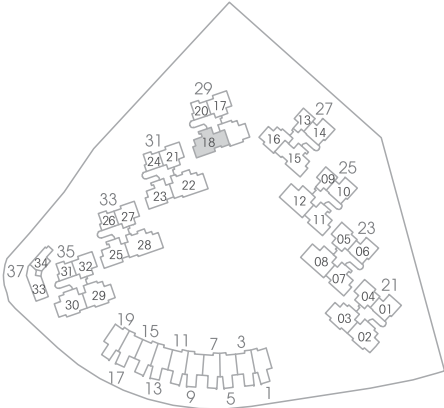
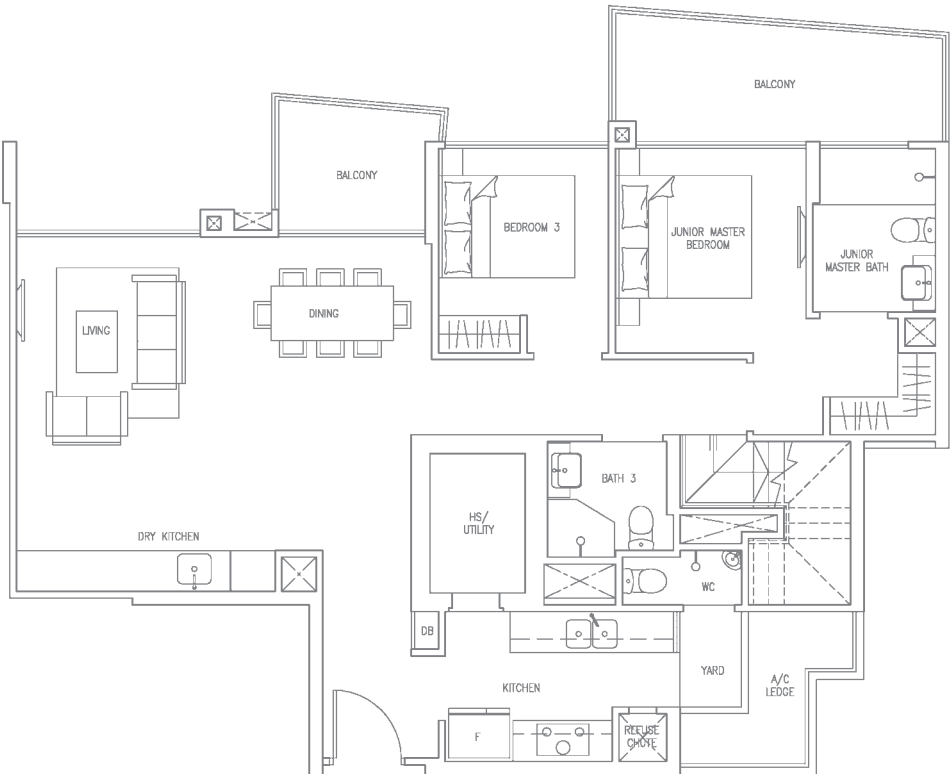
ROOF LEVEL



UPPER LEVEL



LOWER LEVEL



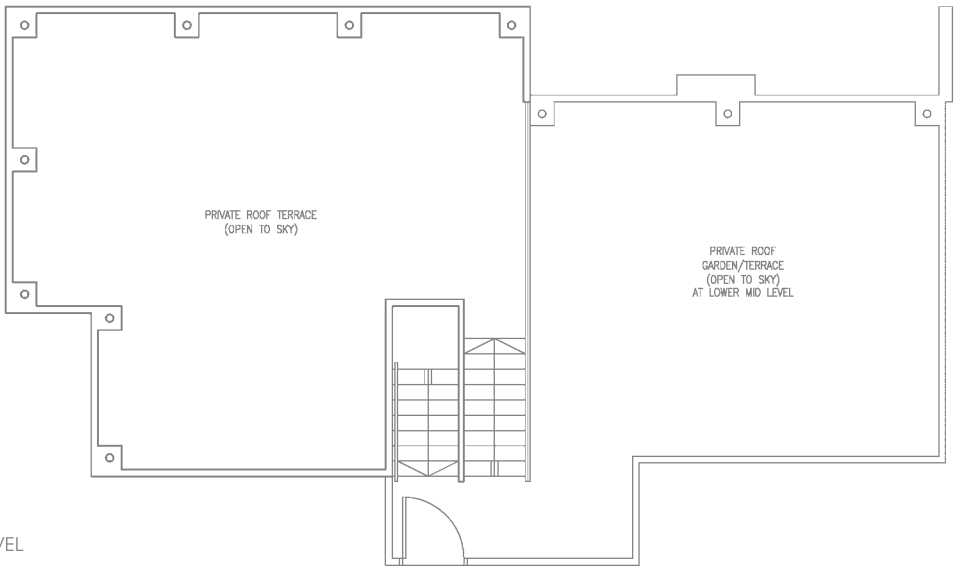
The plans are for general guidance only and subject to changes as may be approved by the relevant authority. The floor plans are approximate measurements and subject to final survey.
Building Plan no. : A1754-00001-2012-BP01 approved on 25 July 2012



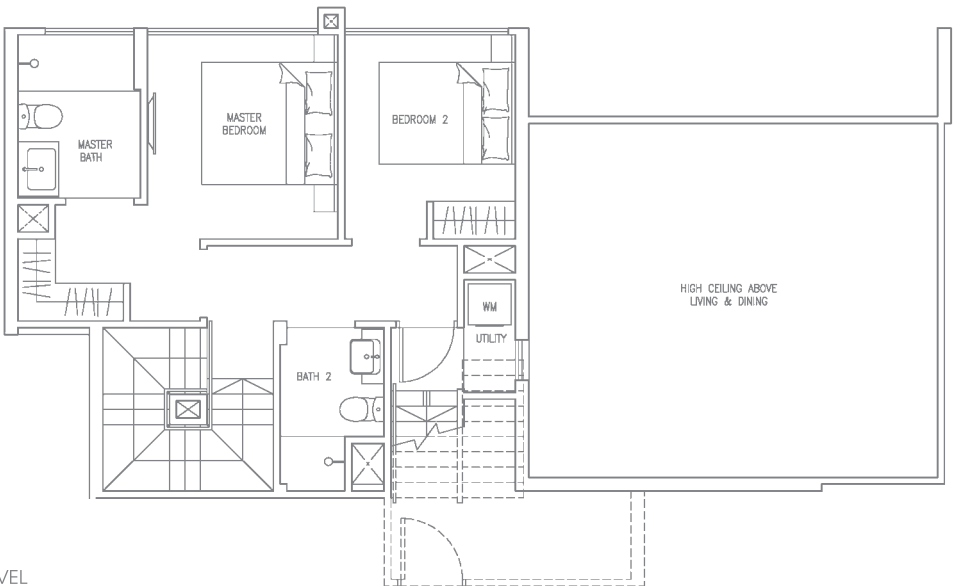
TYPE C1PHb (4-BEDROOM) MIRRORED

Unit #13-15

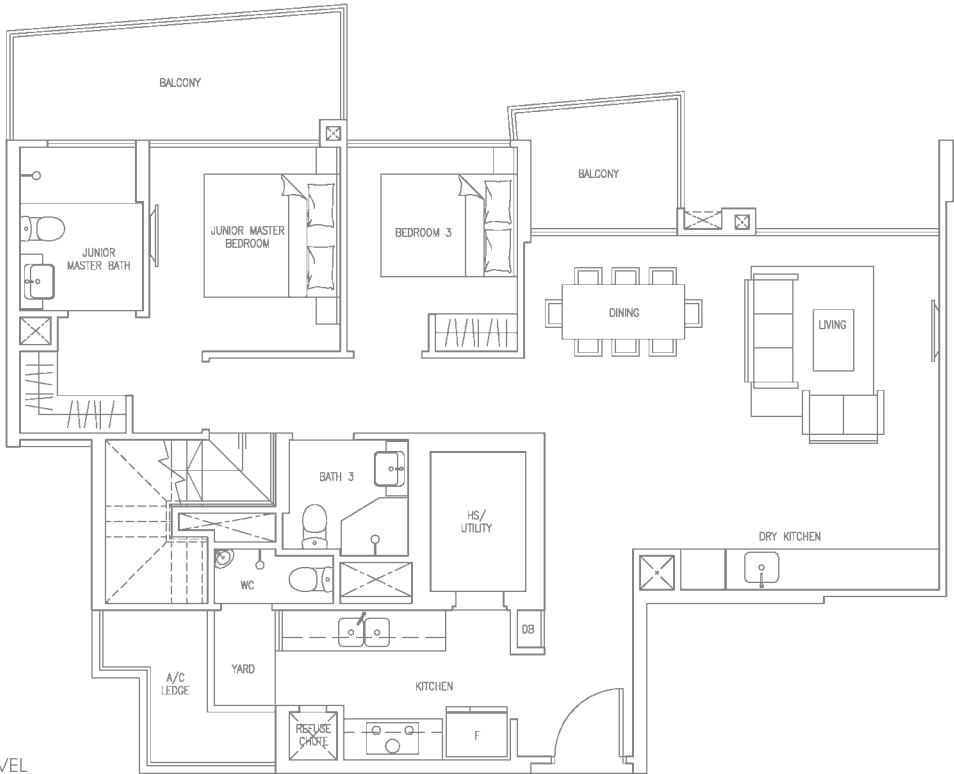
Area 3025 sqft / 281 sqm



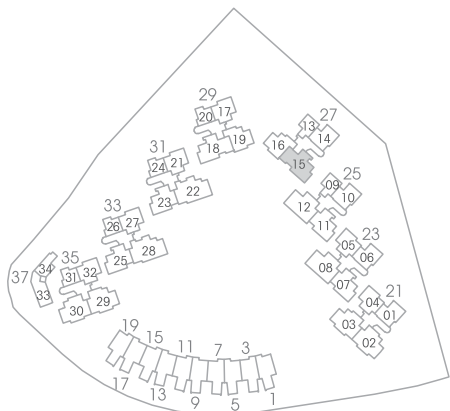
ROOF LEVEL



UPPER LEVEL



LOWER LEVEL



The plans are for general guidance only and subject to changes as may be approved by the relevant authority. The floor plans are approximate measurements and subject to final survey.

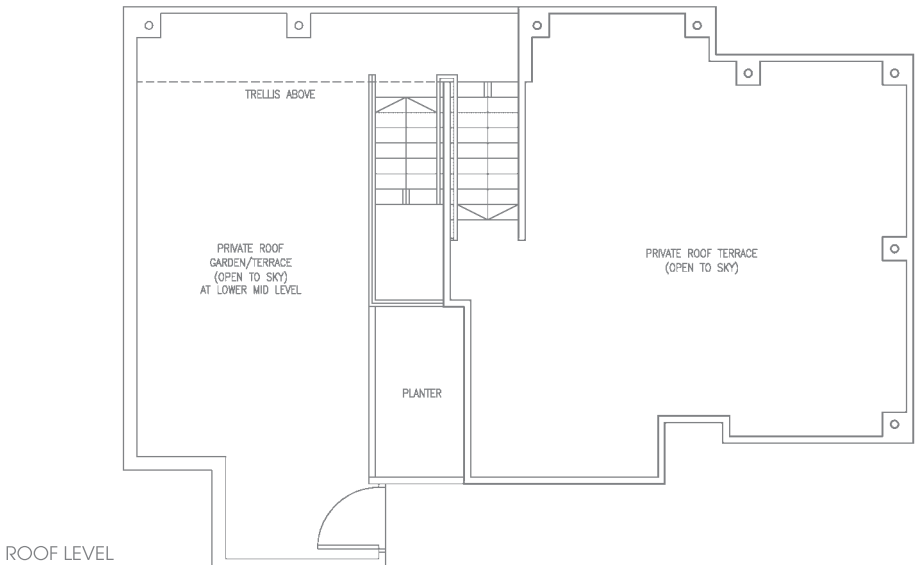
Building Plan no. : A1754-00001-2012-BP01 approved on 25 July 2012

PENTHOUSE

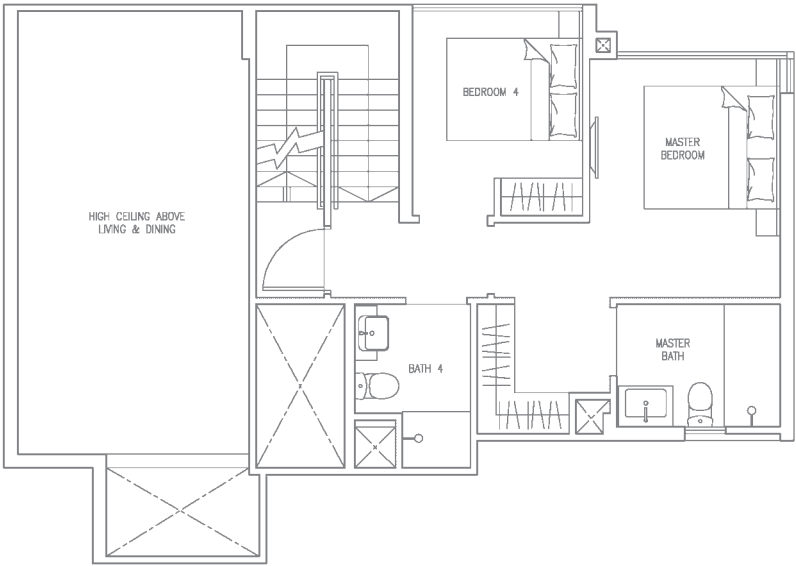
TYPE C2PH (4-BEDROOM)

Unit #13-30

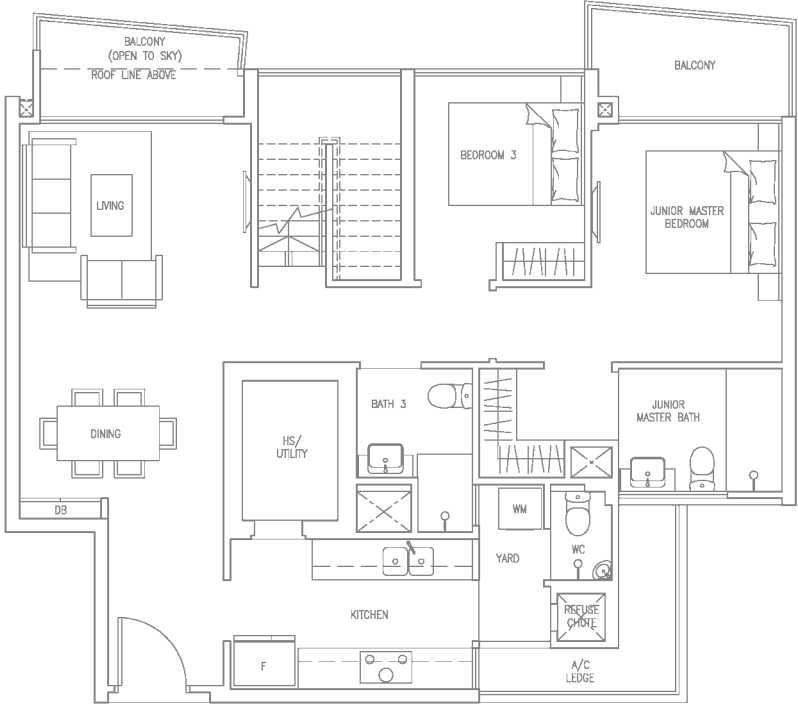
Area 2713 sqft / 252 sqm



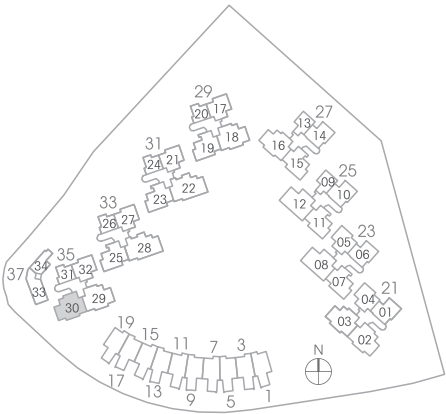
ROOF LEVEL



UPPER LEVEL



LOWER LEVEL



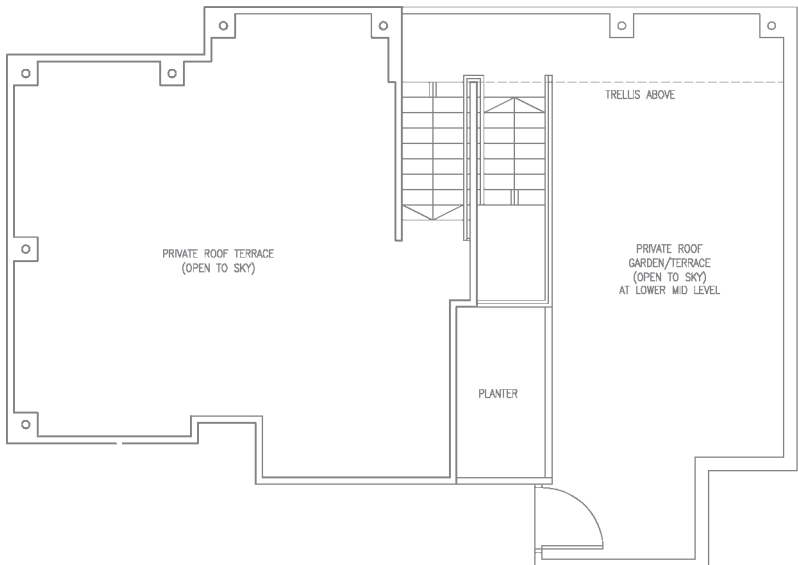
The plans are for general guidance only and subject to changes as may be approved by the relevant authority. The floor plans are approximate measurements and subject to final survey.
Building Plan no. : A1754-00001-2012-BP01 approved on 25 July 2012



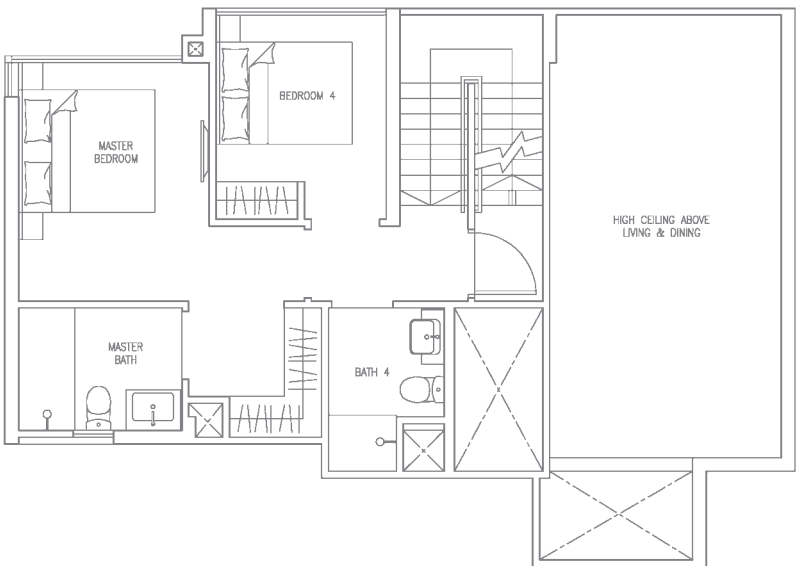
TYPE C2PH (4-BEDROOM) MIRRORED

Unit #13-02

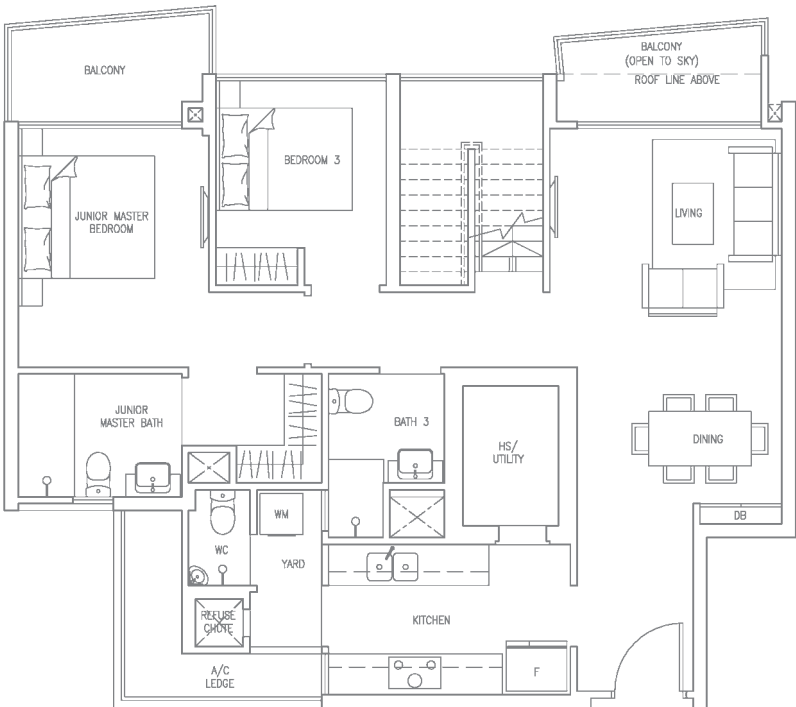
Area 2713 sqft / 252 sqm



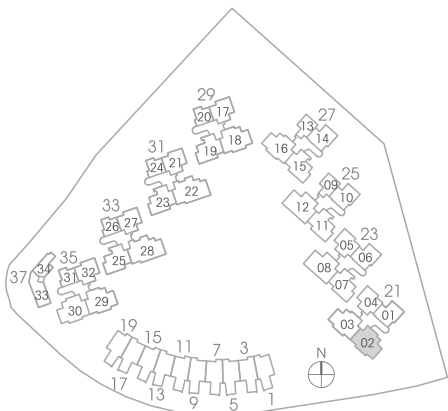
ROOF LEVEL



UPPER LEVEL



LOWER LEVEL



The plans are for general guidance only and subject to changes as may be approved by the relevant authority. The floor plans are approximate measurements and subject to final survey.

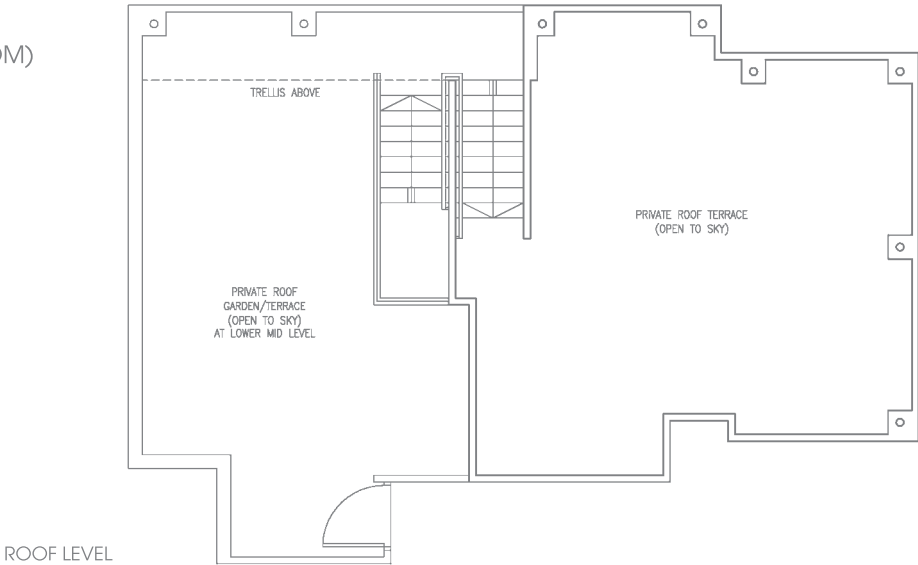
Building Plan no. : A1754-00001-2012-BP01 approved on 25 July 2012

PENTHOUSE

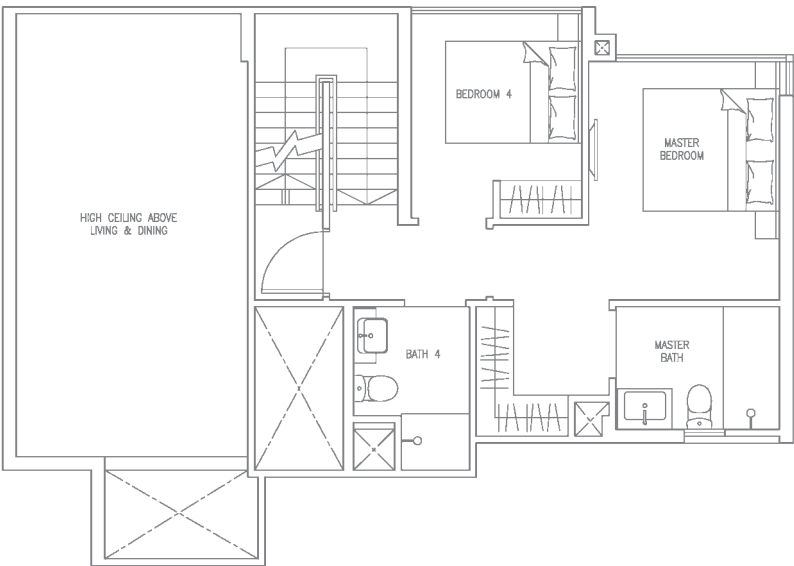
TYPE C2PHa (4-BEDROOM)

Unit #13-03

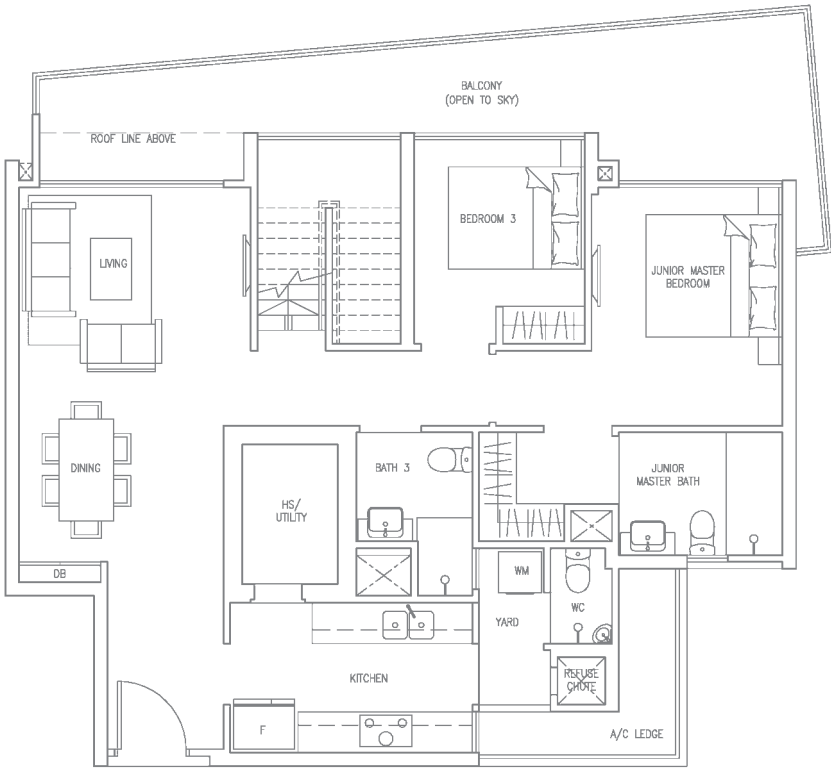
Area 2842 sqft / 264 sqm



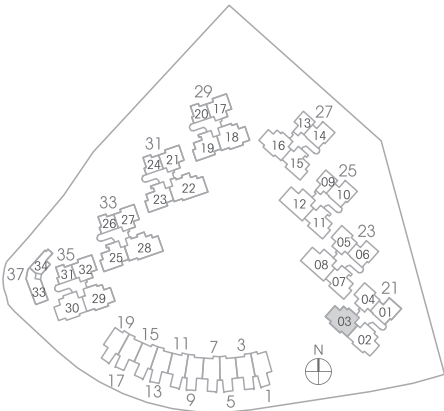
ROOF LEVEL



UPPER LEVEL



LOWER LEVEL



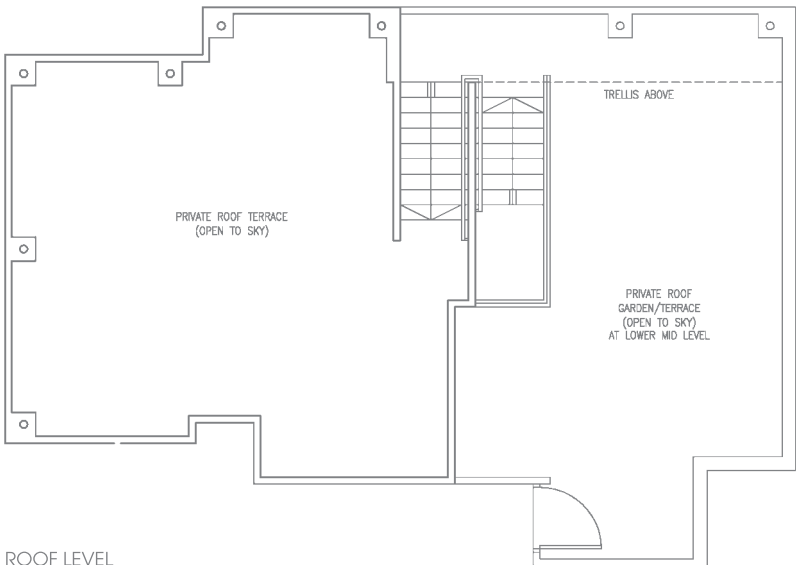
The plans are for general guidance only and subject to changes as may be approved by the relevant authority. The floor plans are approximate measurements and subject to final survey.
Building Plan no. : A1754-00001-2012-BP01 approved on 25 July 2012



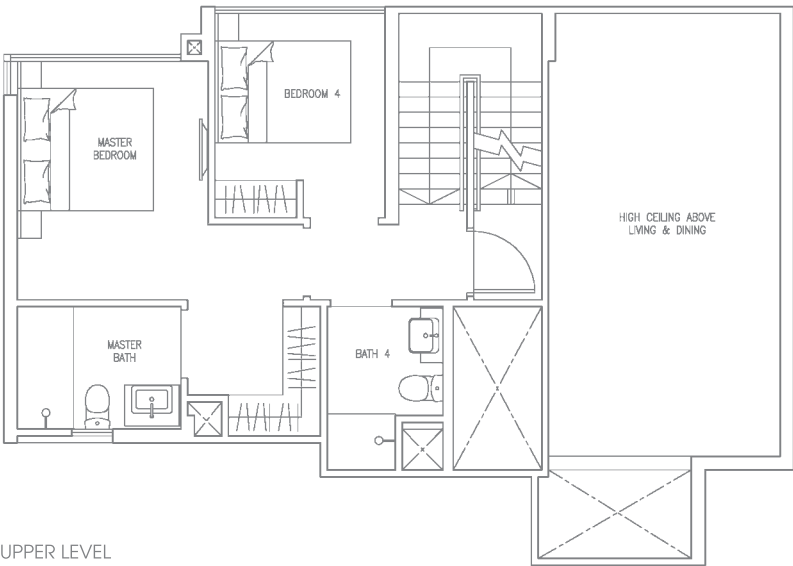
TYPE C2PHa (4-BEDROOM) MIRRORED

Unit #13-29

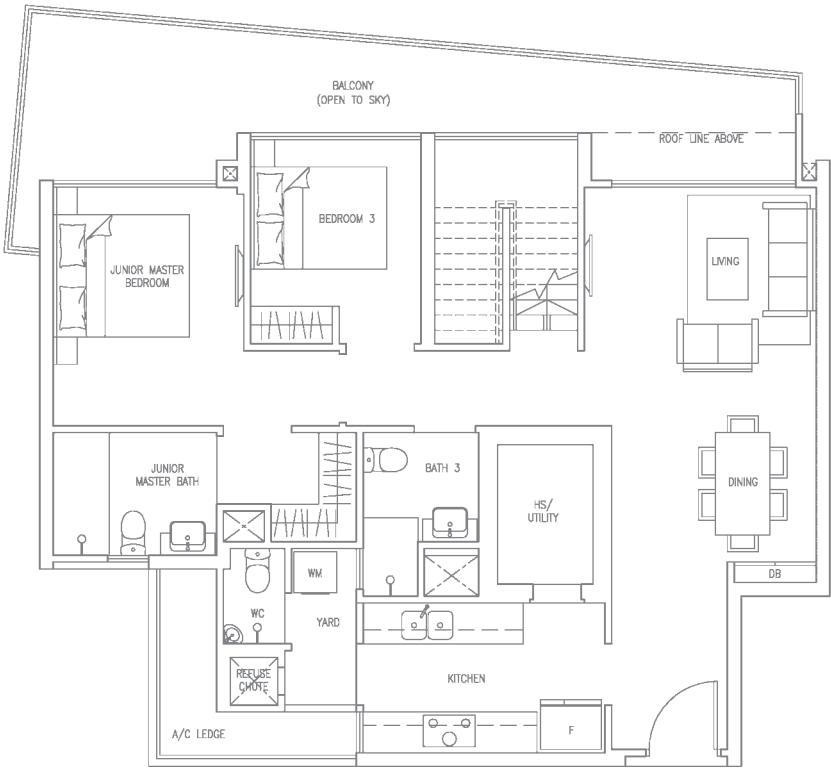
Area 2842 sqft / 264 sqm



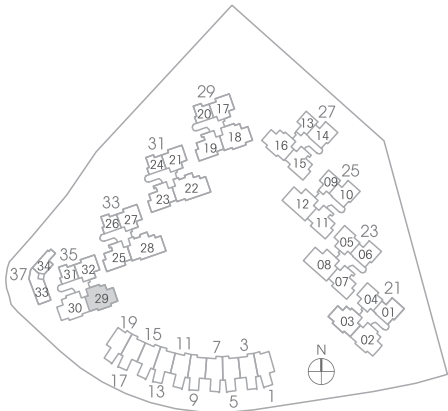
ROOF LEVEL



UPPER LEVEL



LOWER LEVEL



The plans are for general guidance only and subject to changes as may be approved by the relevant authority. The floor plans are approximate measurements and subject to final survey.

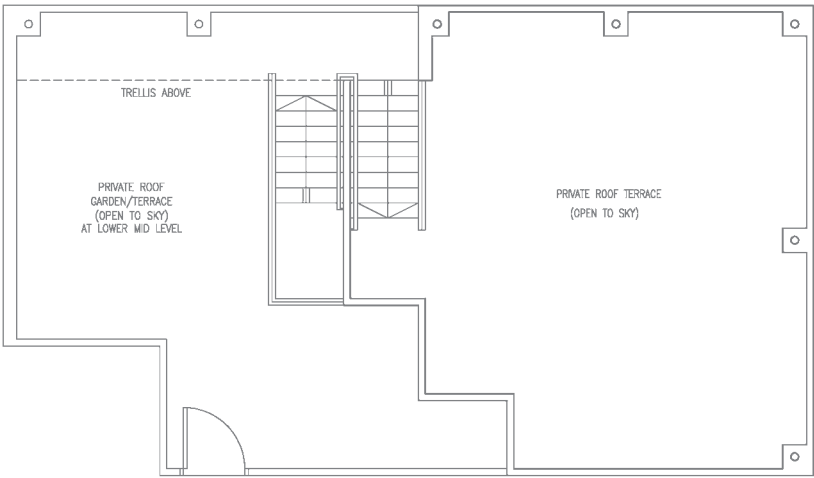
Building Plan no. : A1754-00001-2012-BP01 approved on 25 July 2012

PENTHOUSE

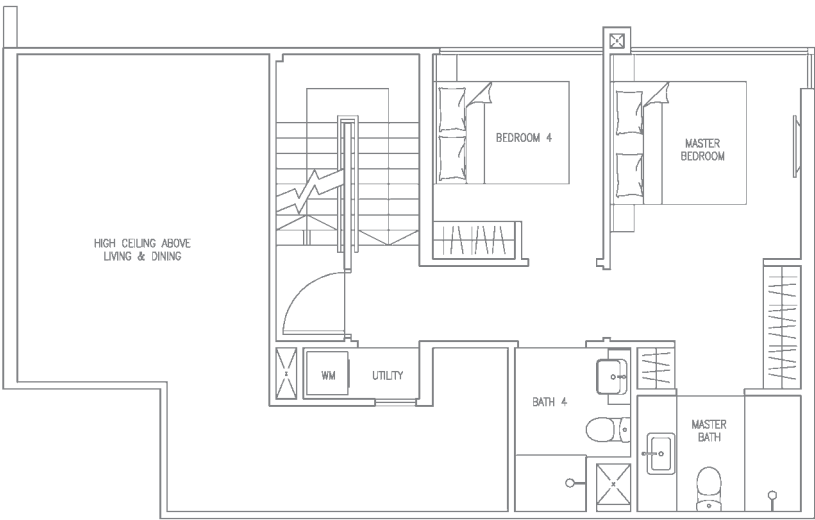
TYPE C3PH (4-BEDROOM)

Unit #13-08
#13-12

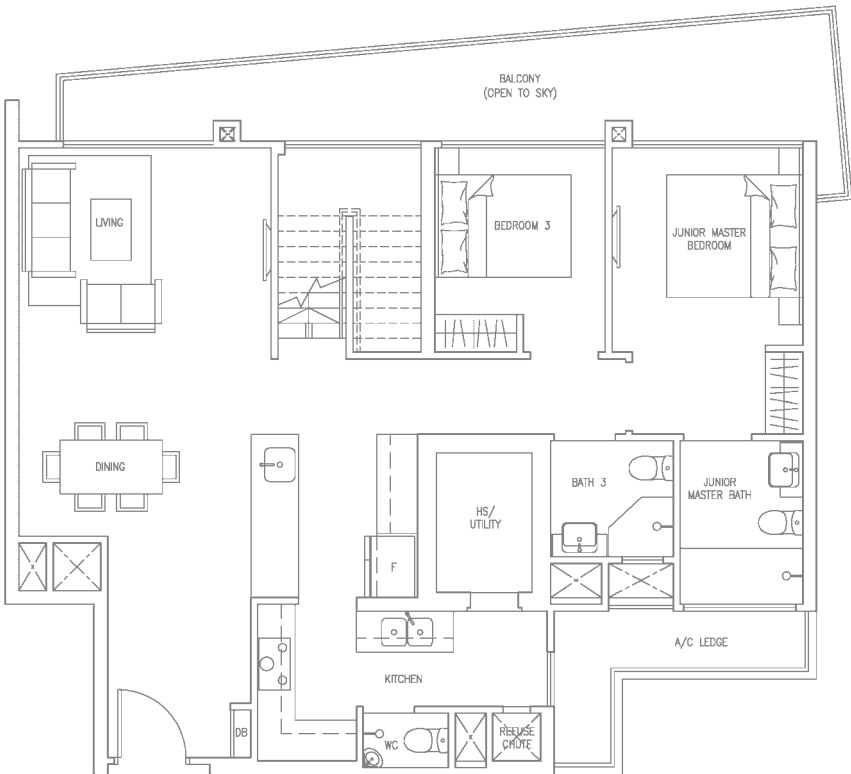
Area 2863 sqft / 266 sqm



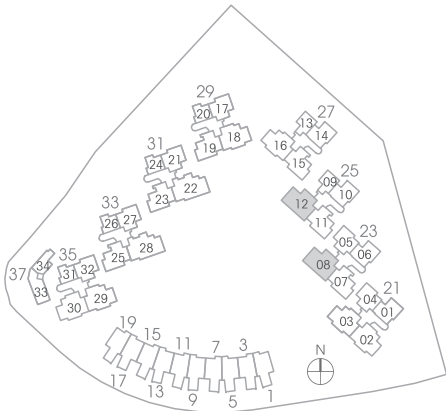
ROOF LEVEL



UPPER LEVEL



LOWER LEVEL

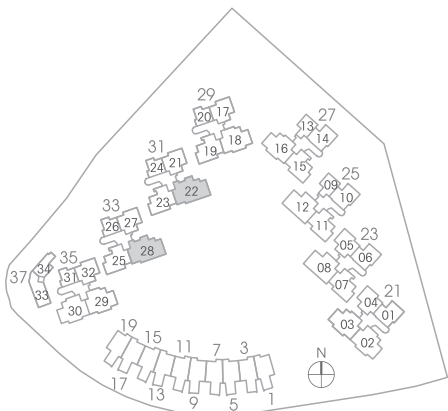
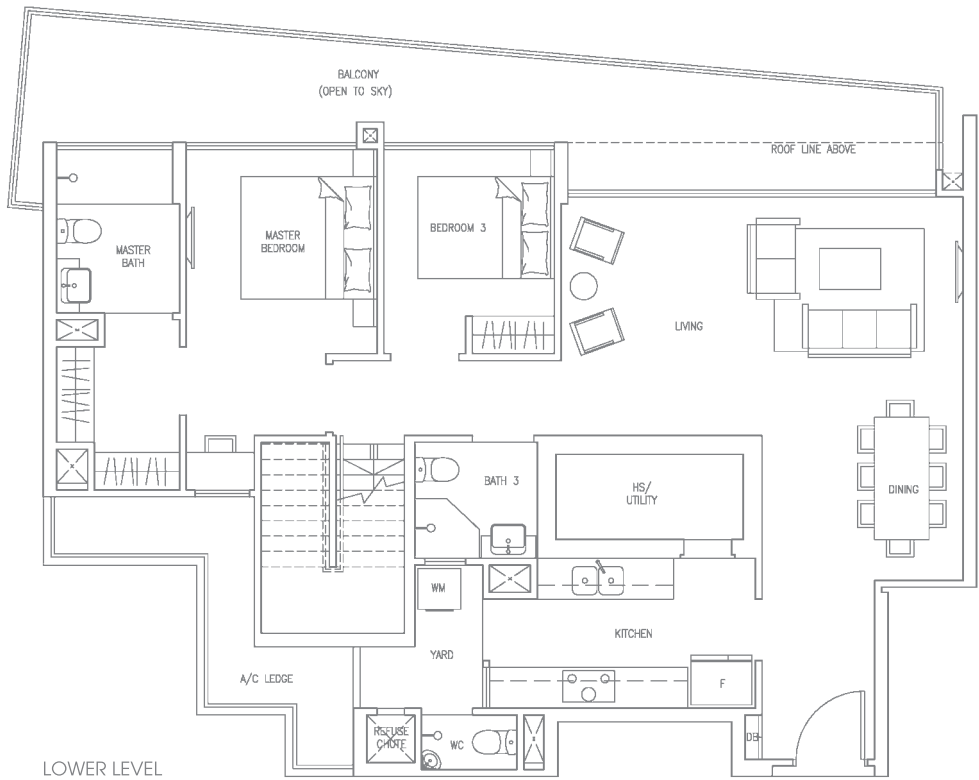
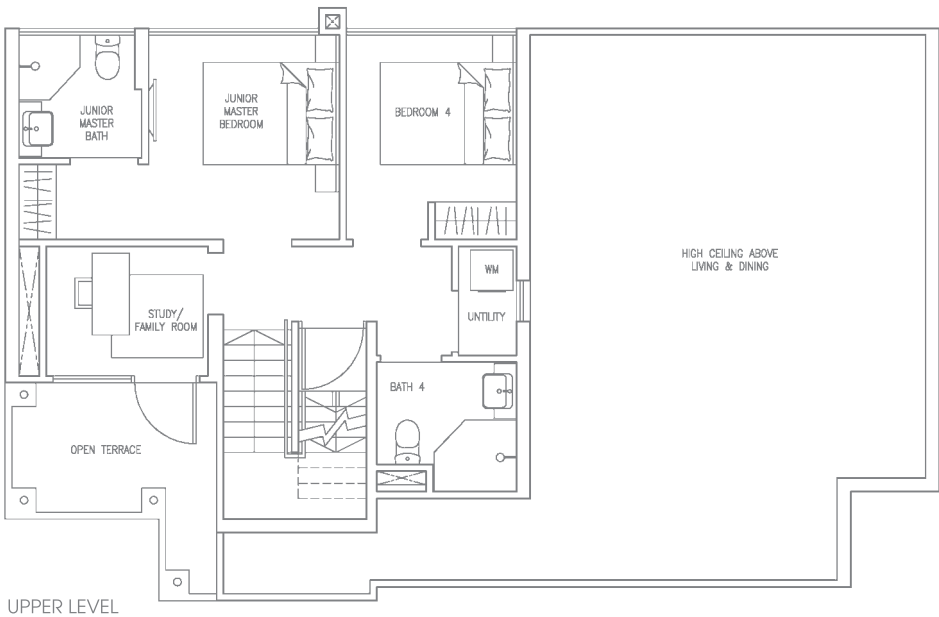
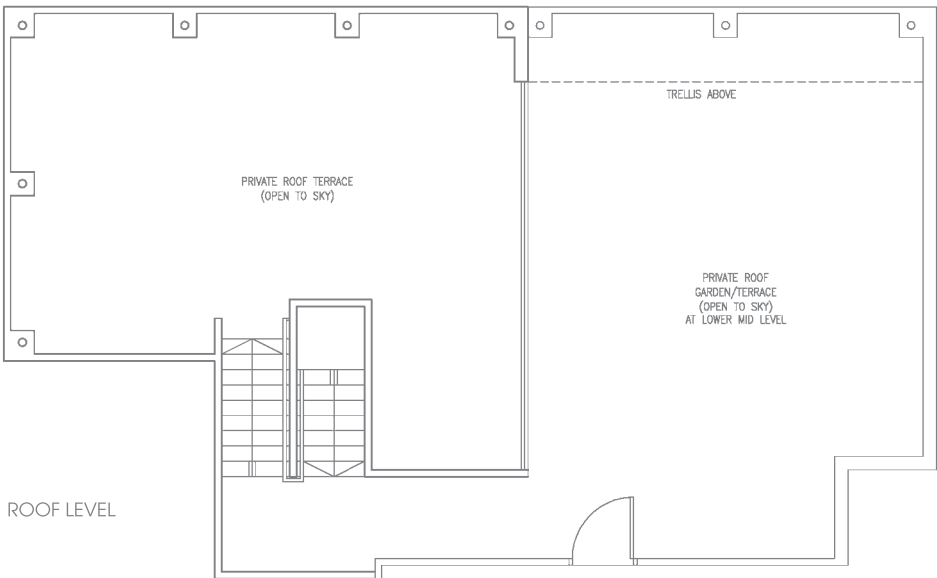


The plans are for general guidance only and subject to changes as may be approved by the relevant authority. The floor plans are approximate measurements and subject to final survey.
Building Plan no. : A1754-00001-2012-BP01 approved on 25 July 2012



TYPE D1PH (4-BEDROOM)

Unit #13-22
#13-28
Area 3574 sqft / 332 sqm



The plans are for general guidance only and subject to changes as may be approved by the relevant authority. The floor plans are approximate measurements and subject to final survey.

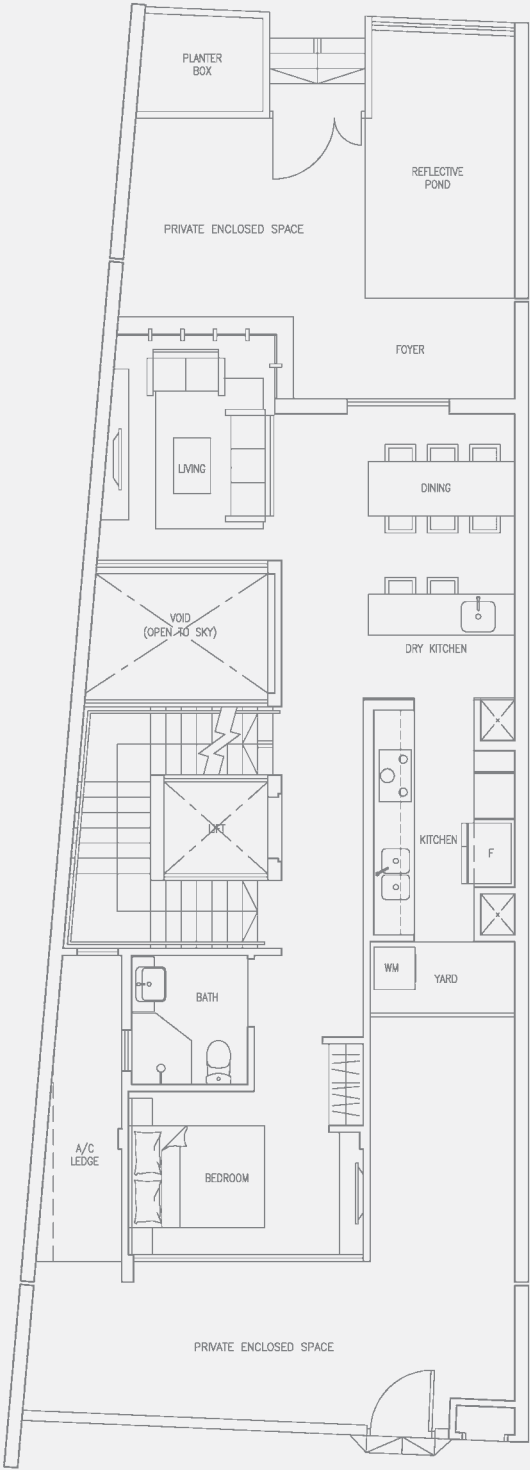
Building Plan no. : A1754-00001-2012-BP01 approved on 25 July 2012

TOWNHOUSE

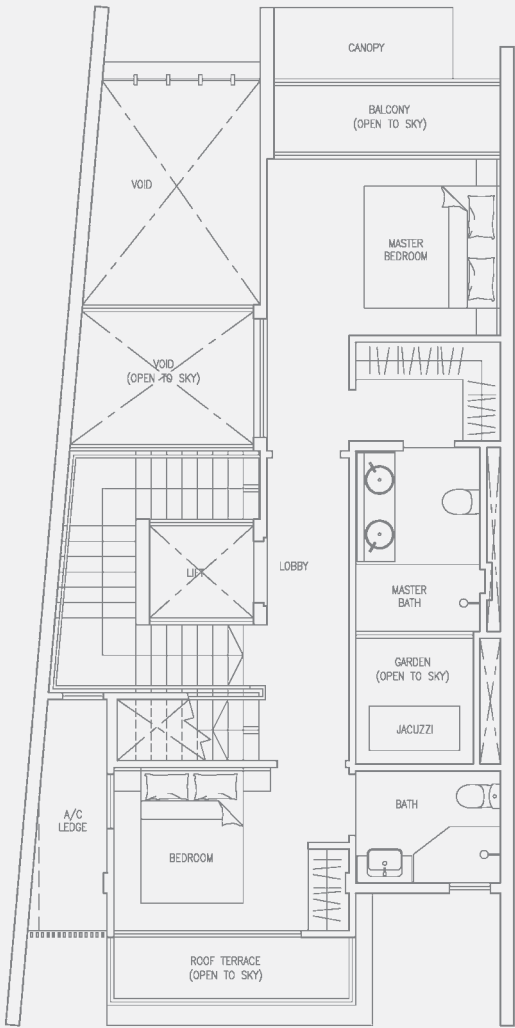
TYPE TH1 (TOWNHOUSE)

Block 5, 9, 13, 17

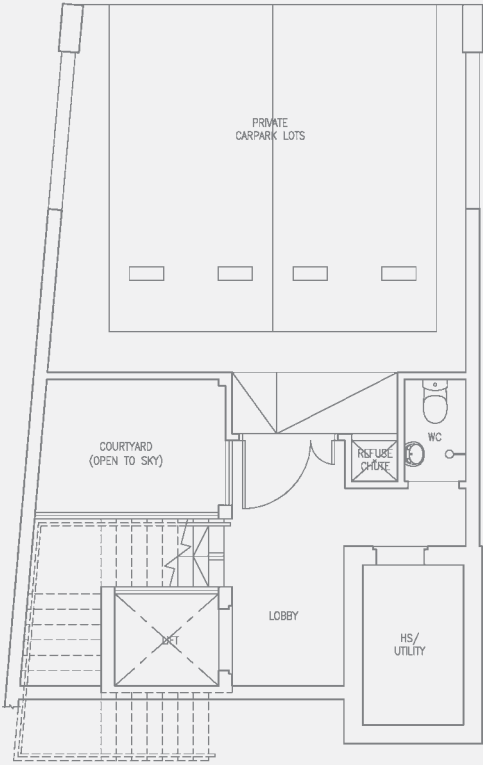
Area 4672 sqft / 434 sqm



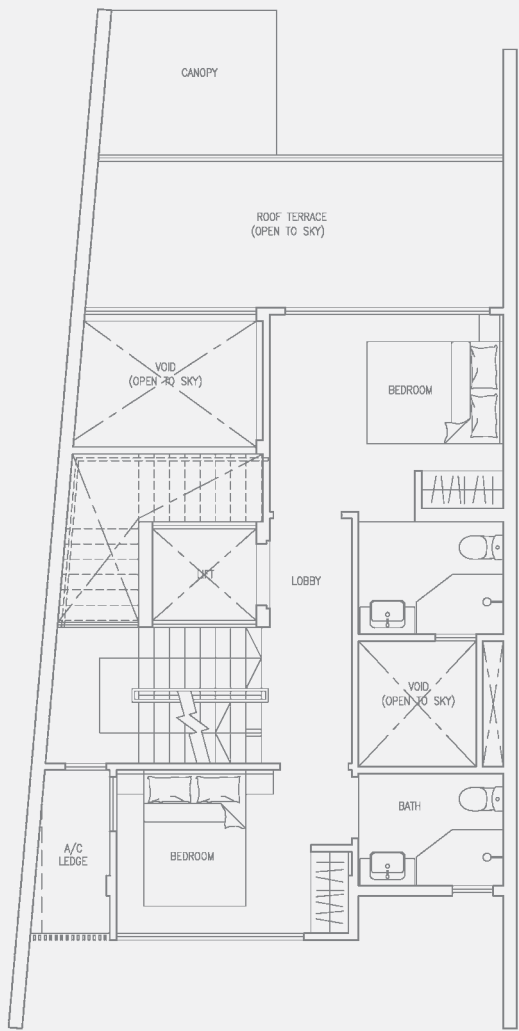
1ST STOREY



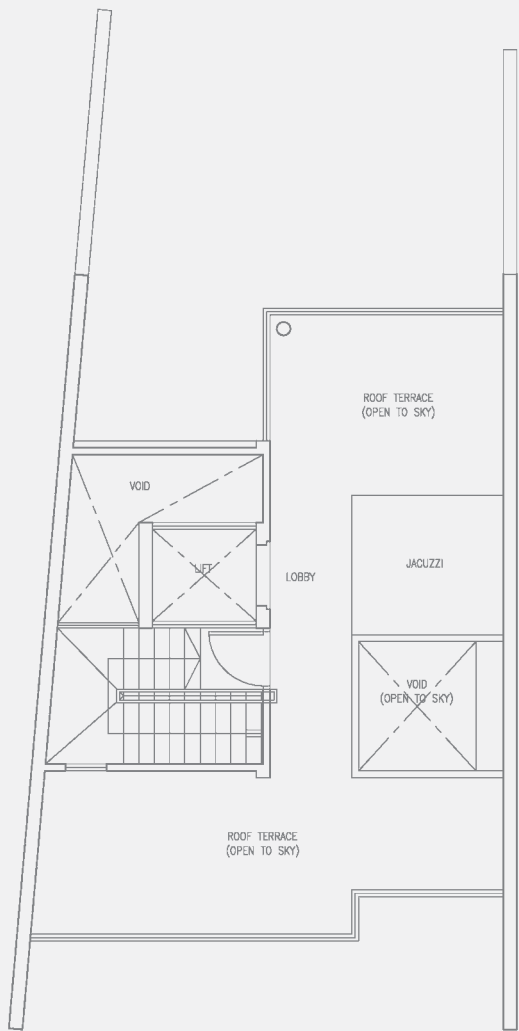
2ND STOREY



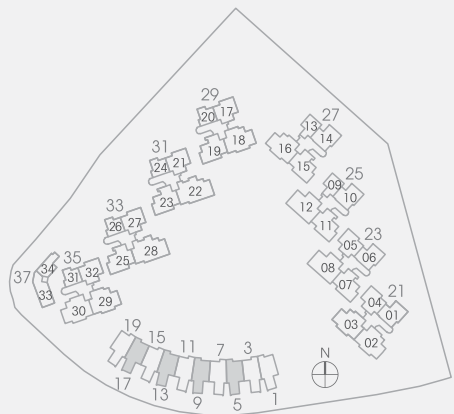
BASEMENT



3RD STOREY



Roof Terrace

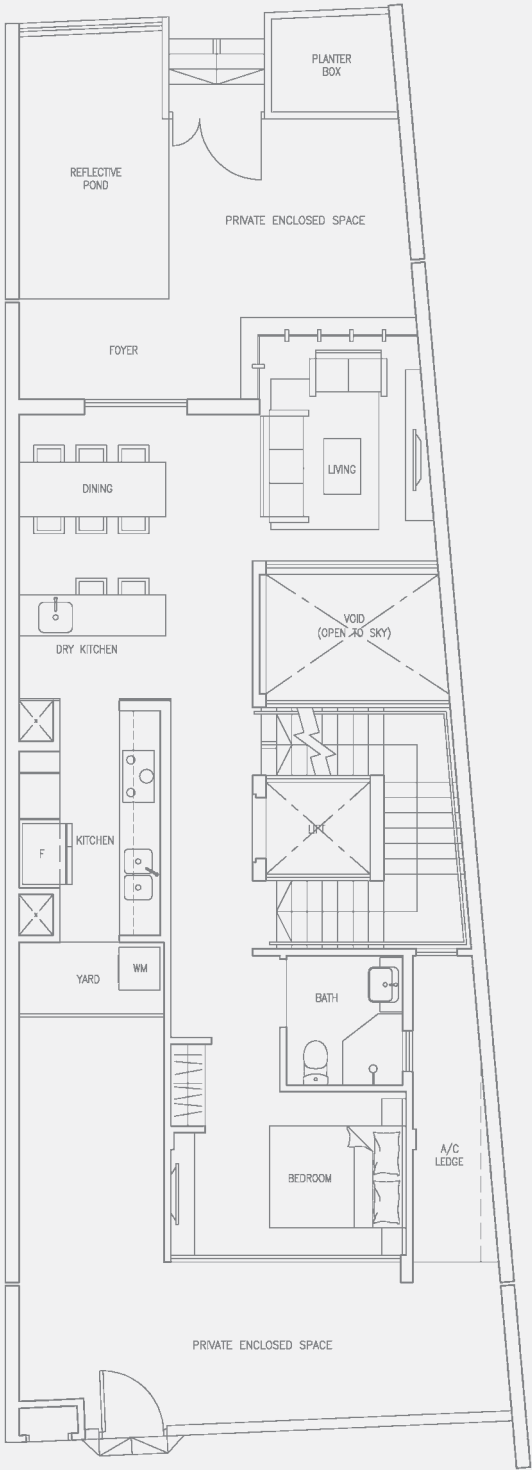


The plans are for general guidance only and subject to changes as may be approved by the relevant authority. The floor plans are approximate measurements and subject to final survey.
 Building Plan no. : A1754-00001-2012-BP01 approved on 25 July 2012

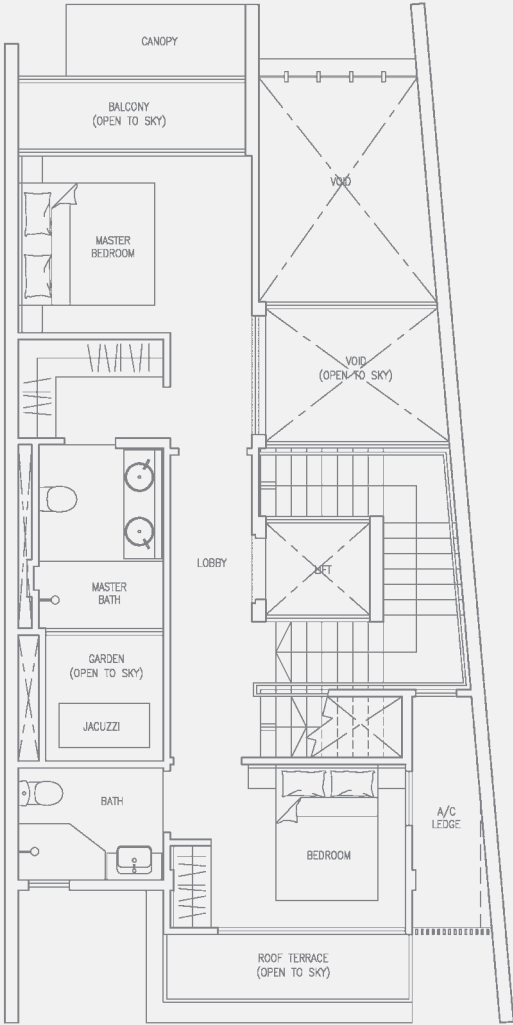


TOWNHOUSE

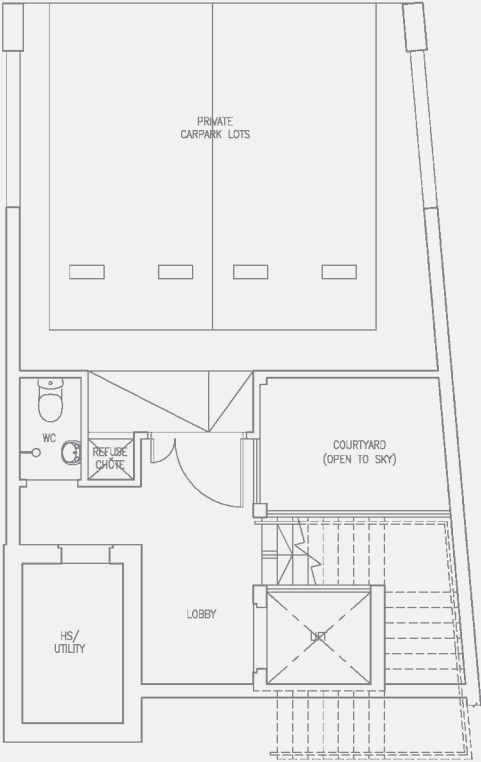
TYPE TH1
(TOWNHOUSE) MIRRORED
Block 3, 7, 11, 15
Area 4672 sqft / 434 sqm



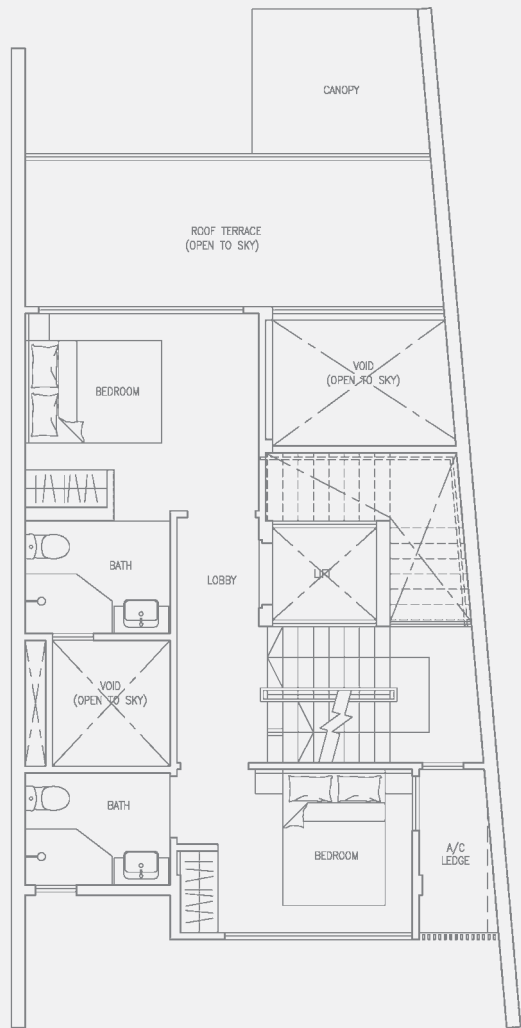
1ST STOREY



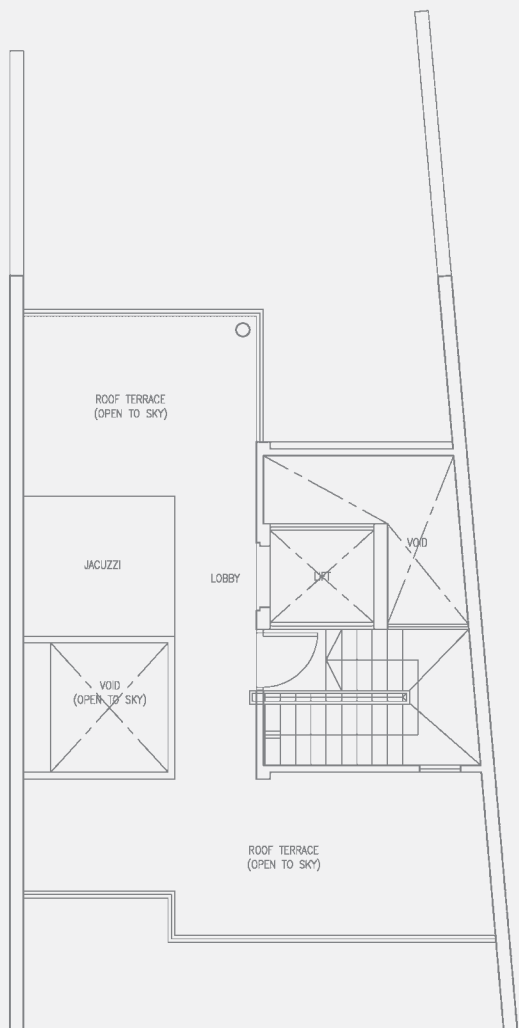
2ND STOREY



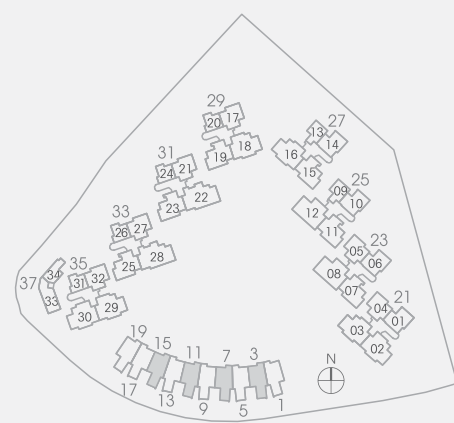
BASEMENT



3RD STOREY



ROOF TERRACE

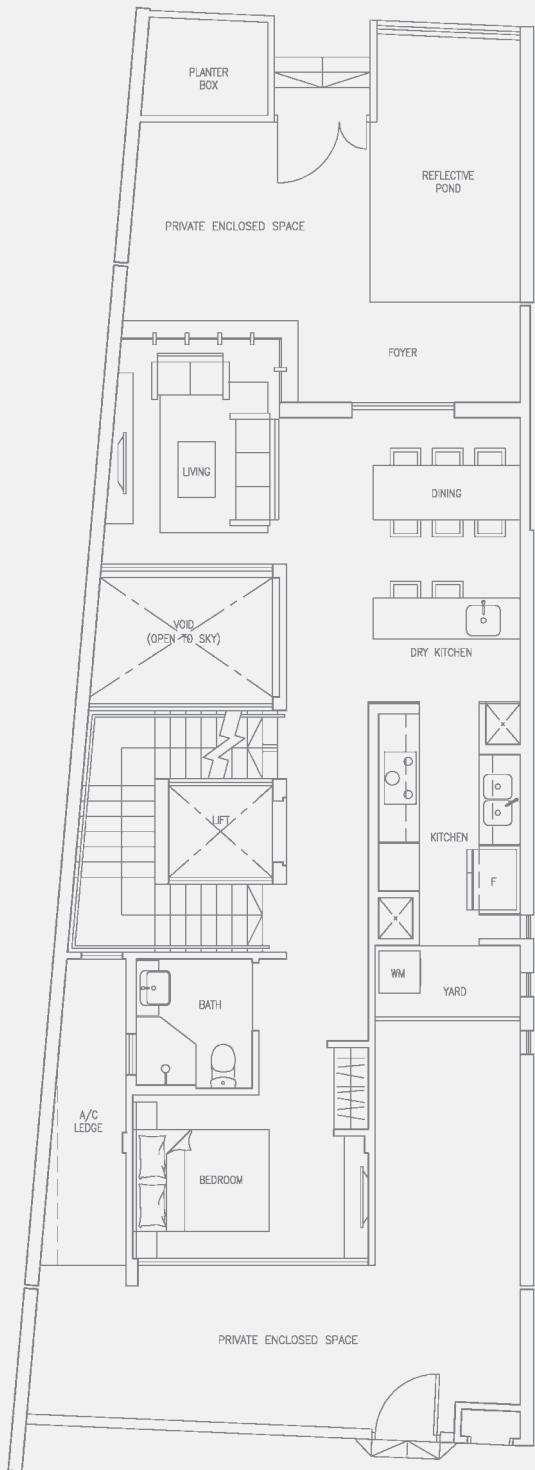


TOWNHOUSE

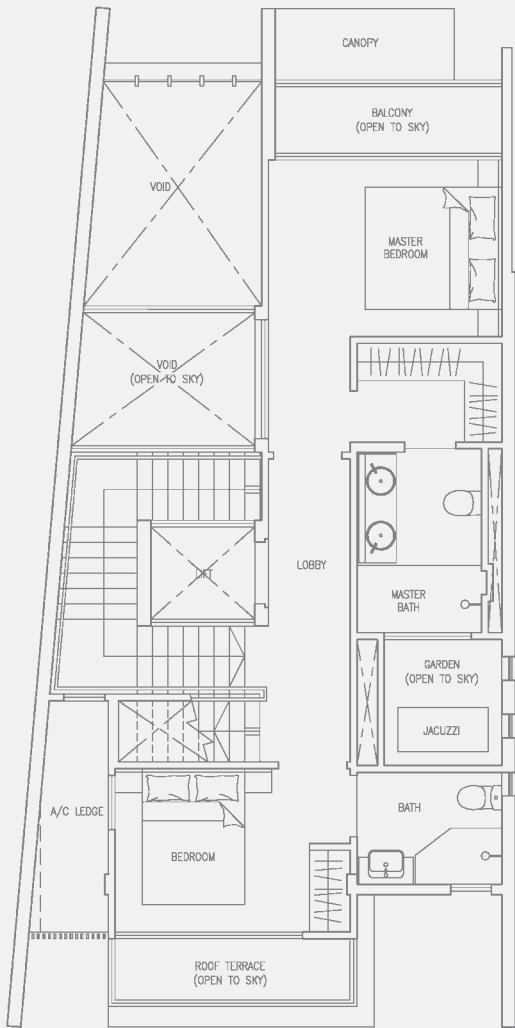
TYPE TH1A (TOWNHOUSE)

Block 1

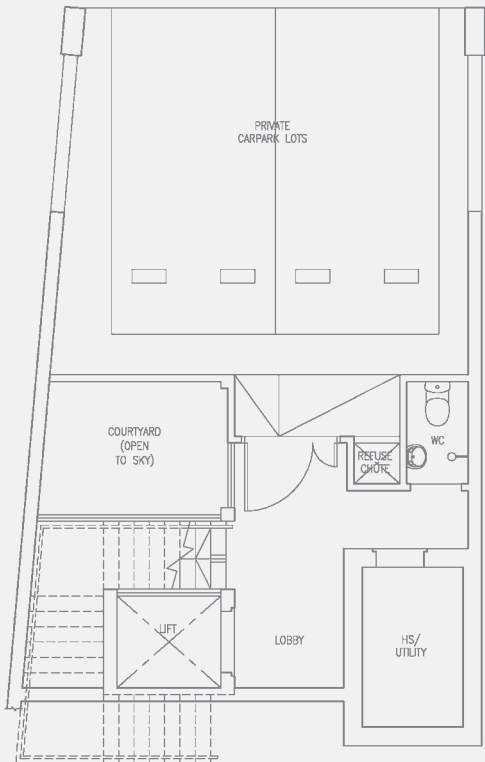
Area 4672 sqft / 434 sqm



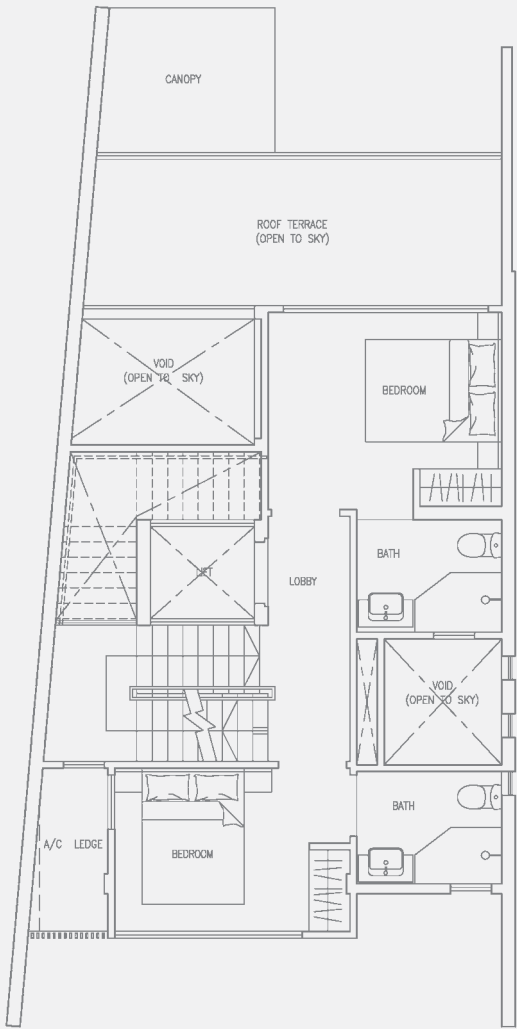
1ST STOREY



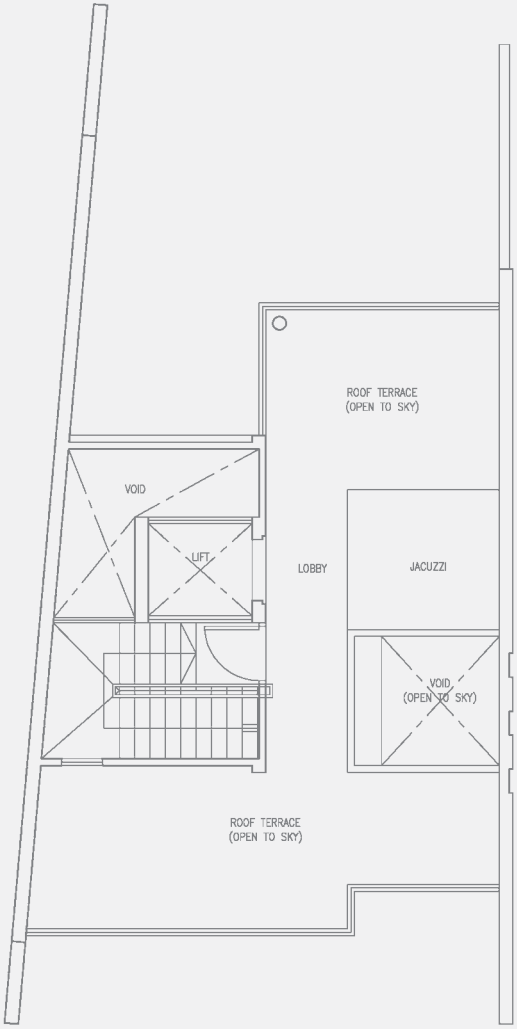
2ND STOREY



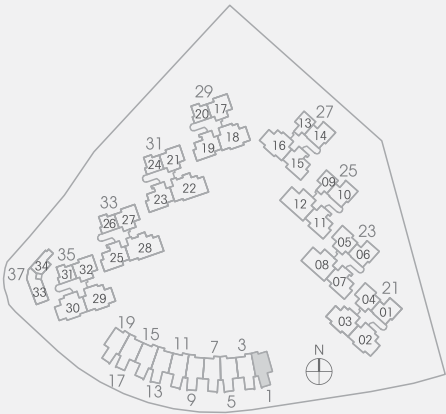
BASEMENT



3RD STOREY

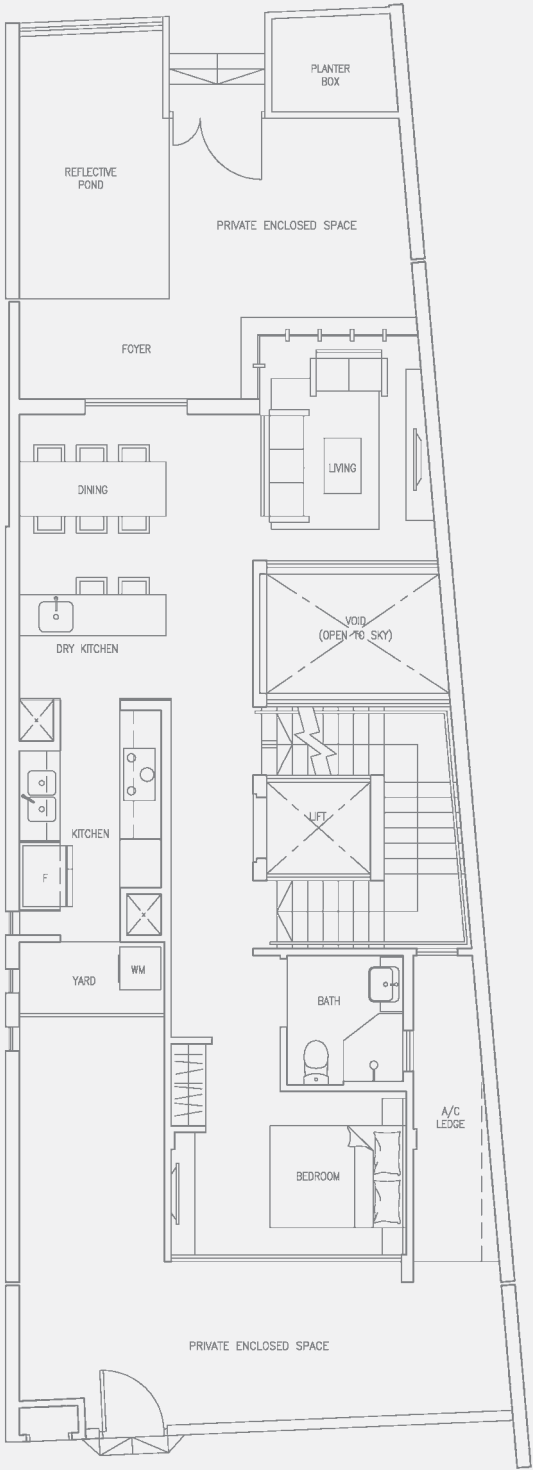


ROOF TERRACE

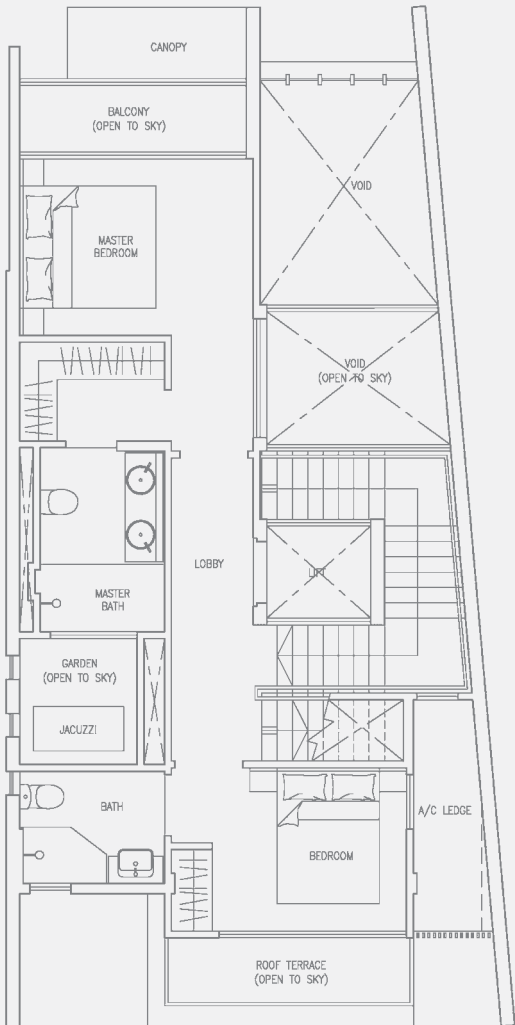


TOWNHOUSE

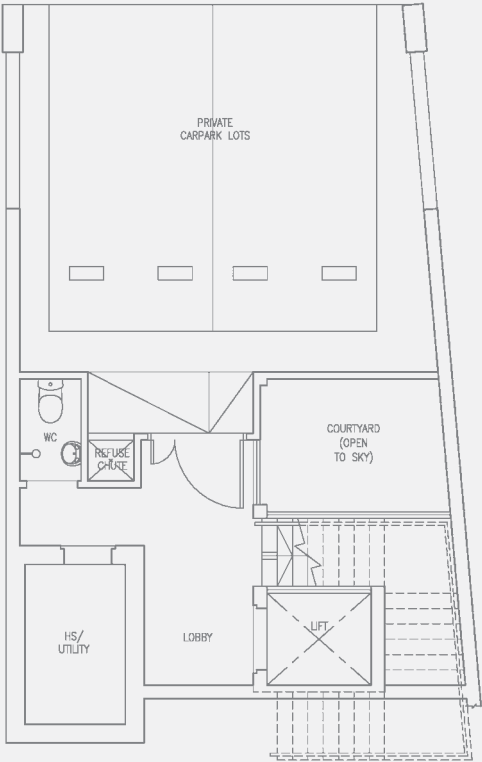
TYPE TH1A
(TOWNHOUSE) MIRRORED
Block 19
Area 4672 sqft / 434 sqm



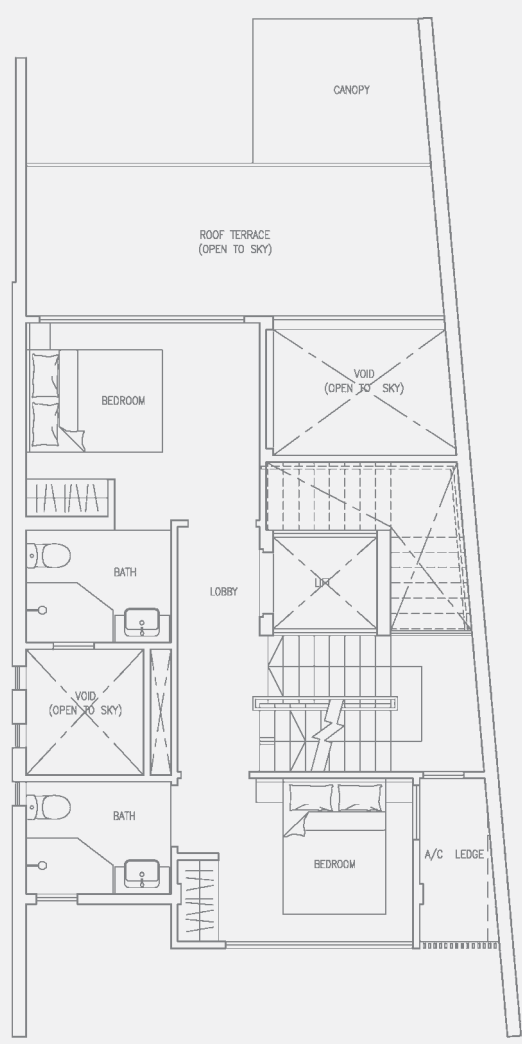
1ST STOREY



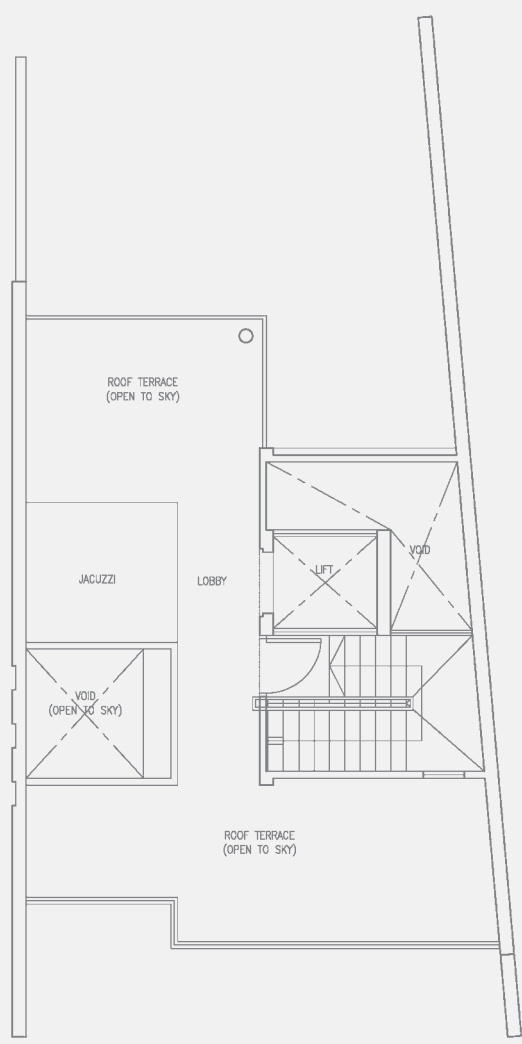
2ND STOREY



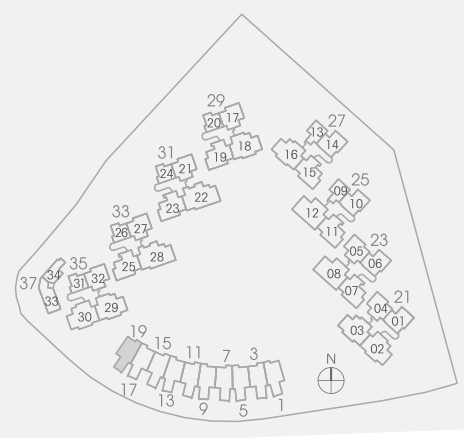
BASEMENT



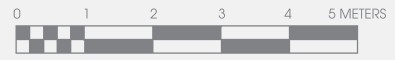
3RD STOREY



ROOF TERRACE



The plans are for general guidance only and subject to changes as may be approved by the relevant authority. The floor plans are approximate measurements and subject to final survey.
Building Plan no. : A1754-00001-2012-BP01 approved on 25 July 2012



A LUXURIOUS DEVELOPMENT BY:

TG MASTER PTE LTD



DEVELOPER: **TG MASTER PTE LTD**
DEVELOPER LICENCE NO.: **C0953**
TENURE OF LAND: **99 YEARS COMMENCING FROM 20 FEBRUARY 2012**
LOT NO.: **3478K MK 19**
BUILDING PLAN NO.: **A1754-00001-2012-BP01 APPROVED ON 25 JULY 2012**
EXPECTED TOP DATE: **31 DEC 2016**
EXPECTED DATE OF LEGAL COMPLETION: **31 DEC 2019**

While every reasonable care has been taken in preparing this brochure and in constructing the models and showflats, the Developer and their Agents cannot be held responsible for any inaccuracies or omissions. Visual representations, models, showflat display and illustrations, photographs and other graphic representations and references are intended to portray only artist's impression of the development and cannot be regarded as representations of fact.

All information, specifications, renderings, visual representations and plans are correct at the time of publication and are subject to changes as may required by the developer and/or the competent authorities and shall not form part of any offer or contract nor constitute any warranty by the developer and shall not be regarded as statements or representations of fact. All facts are subjected to amendments as directed and/or approved by the building authorities. All areas are approximate measurements only and subject to final survey. The Sales and Purchase Agreement shall form the entire agreement between the Developer and the Purchaser and shall supersede all statements, representations, or promise made prior to the signing of the Sales and Purchase Agreement and shall in no way be modified by any statement, representations or promises made by the developer or the Marketing Agents.

