

183  
LONGHAUS



A high-angle photograph of a young woman with blonde hair, wearing a blue and white striped shirt, a dark vest, and a grey beret. She is holding a vintage-style camera up to her eye, smiling broadly. The background is a blurred, light-colored wall.

LIFE'S GOOD  
BUT IT GETS  
BETTER HERE



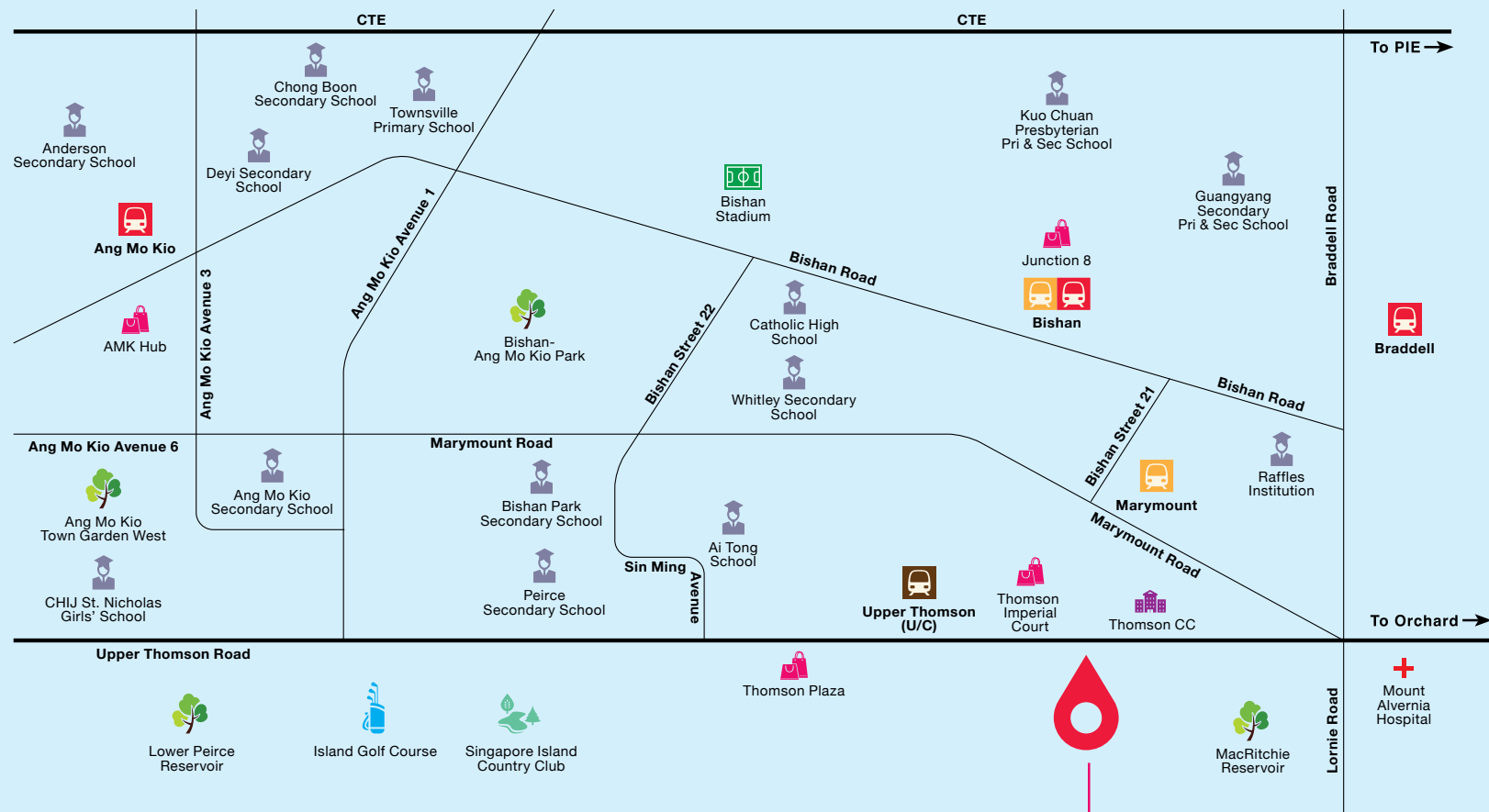
## 183 LONGHAUS

### THE HIVE AND HUB OF THE HOOD

Located on the site of the former Longhouse Food Centre at Upper Thomson Road, 183 LONGHAUS is a freehold 4-storey mixed development. Comprising of 10 commercial units and 40 residential apartments with communal facilities, it offers countless amenities and the best of urban conveniences. Truly a mixed development surrounded by old icons and new experiences to please any palate.

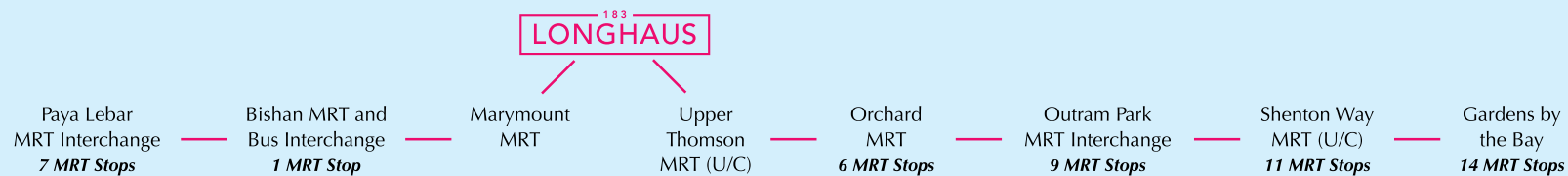






Map not drawn to scale

183  
LONGHAUS



## CITY-EDGE CONVENIENCE HERE, THERE & EVERYWHERE

The city beckons from your window at 183 LONGHAUS. Just a few minutes away, the Upper Thomson MRT station and an extensive road networks via CTE and PIE expressways connect you to all of Singapore. Expect reduced travel time between Woodlands and the CBD with the new Thomson-East Coast Line, an underground line scheduled for completion by 2020.





## NOWHERE ELSE COMES CLOSER

Centrally located in eclectic Upper Thomson Road, the area's nostalgic atmosphere evokes a time when life was simpler. The plethora of nearby shophouses and eateries offers a feast of authentic flavours.

Within two kilometres, good schools abound. You will find Ai Tong School, Marymount Convent School, Raffles Institution, Catholic High School and more.



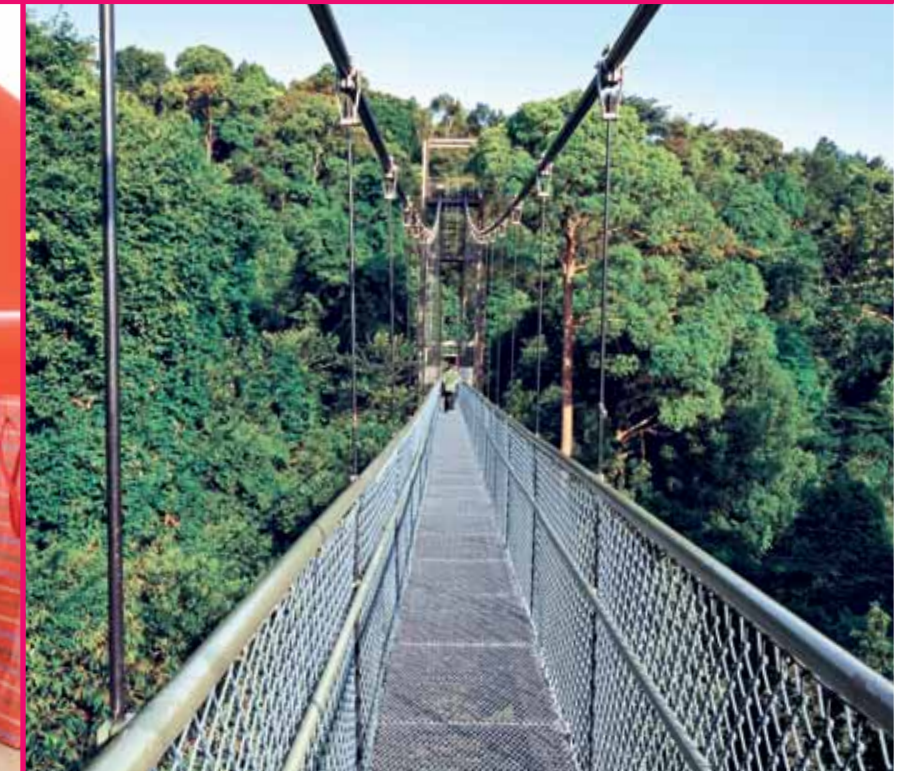
A connected lifestyle right at your door with the future Upper Thomson station just steps away.



Places of learning about such as Raffles Institution, Raffles Junior College and St. Joseph's Institution are within minutes.



More shopping and entertainment just 1 MRT stop away.



Minutes' drive to nature's wonders from reserves, reservoirs to the Tree Top Walk.





## LIVING LA VIDA LOCAL

Like the ice-kacang, 183 LONGHAUS at Upper Thomson is where everything comes together in a la vida local presentation, embodying a veritable fusion of tastes and hidden surprises. Indulge, feast and chill all in one place.





## SOMETHING OLD

Where else can you savour the hot favourites of a bygone era or 45 different variations of prata? Just step out and give your taste buds a refresher course on the dining scene along Upper Thomson Road. From the old world charm of Hwa Nam Restaurant's dim sum to Meng Kitchen's Bak Chor Mee and Nam Kee Chicken Rice. It's a great way to bring on back the good times just by serving up a variety of quintessential local dishes.



## SOMETHING NEW

Upper Thomson is also home to some of the coolest cafes and bakeries in the city. The choice is yours to start a leisurely Sunday morning with a Brioche French Toast or get cosy with the café scene. Then head for a relaxing brunch at Habitat Coffee and Pacamara Boutique Coffee Roasters, enjoy the ambience and watch the world go by. For the aspiring cooks, you can exercise your culinary skills after a quick trip to the supermarket downstairs for fresh, locally sourced ingredients. Clearly, whatever you need is just around the corner.





# PERFECTLY POSITIONED FOR SUCCESS

Without doubt, location is key to all retail businesses. Situated right at the traffic junction along Upper Thomson Road, 183 LONGHAUS is perfectly close by major roads to present your business with new opportunities as well as complementary conveniences on a platter day and night. Minutes away, the Upper Thomson MRT station is a gateway to seamless connectivity. Just pick your spot for success.





# 183 LONGHAUS SHOPS

Nestled across two Levels, the 10 commercial units at 183 LONGHAUS offer a plethora of convenient services even for the most discerning. The two retail levels have been designed to provide a user-friendly thoroughfare, providing a pleasant shopping and dining experience for residents as well as the public.







## A VIBRANT MIX OF SHOPPERTUNITY

Within the mature estate of District 20, the shops at 183 LONGHAUS present shoppertunity for a vibrant mix of eateries, restaurants and retail outlets – all keenly anticipated by the thousands of residents in nearby homes as well as the office and school-going crowd. With the surrounding areas of Thomson, Marymount, Sin Ming, Bishan and Ang Mo Kio, there will be no lack of shoppers or diners.



183  
**LONGHAUS**  
RESIDENCES

A home imbued with elegance and opulence, flawless in taste and quality. No matter your style, each is laid out to best maximise spatial efficiency and an abundance of natural light. With 40 residences ranging from 2-, 3- & 4-bedroom apartments and penthouses, you will be spoilt for choice.



HOME IS  
WHERE THE  
HEART IS





Artist's Impression

## ROOM FOR INDIVIDUALITY SPACE FOR ALL

Enjoy plush interior spaces that inspire good living for all. Cleverly designed to create room for every need, the palette of well thought out layouts renders every available space a luxurious, daily delight. A livable environment that stands out for enduring functionalism, infused with contemporary essence from the playroom to the bathroom.



## DESIGNED FOR EVERY PALATE

Smart and practical, the suite of premium kitchen appliances makes whipping up a lavish meal seems effortless. Together with feature-rich slide and hide ideas, storage of cooking utensils and cleaning aids are never within sight. Delightful exhibit of consummate craftsmanship throughout its interior creates a visually magnetic atmosphere.



Artist's Impression





## SATISFY YOUR TASTE FOR STYLE

If style is a vital part of your life, then it is an important part of your home. Satiated with creativity, the spacious master bedroom offers maximum warmth and comfort whilst the children's room is approached with inventive imagination. The elegant modernity is continued right to the well-designed bathroom, for the finer side of you.



IT'S WHERE  
THE GOOD  
LIFE BEGINS

Finally, a home that brings you closer  
to the life of your dreams.



Artist's Impression



SITE PLAN



Legend

- A. Main Entrance
- C. Lift Lobby
- E. Open Shower Area
- G. Gymnasium
- B. Driveway
- D. Pool Deck
- F. Jacuzzi Pool
- H. Bin Centre

Artist's Impression



Plans are not to scale and subject to any amendment as may be approved by relevant authorities. All areas are approximate and are subject to final survey.

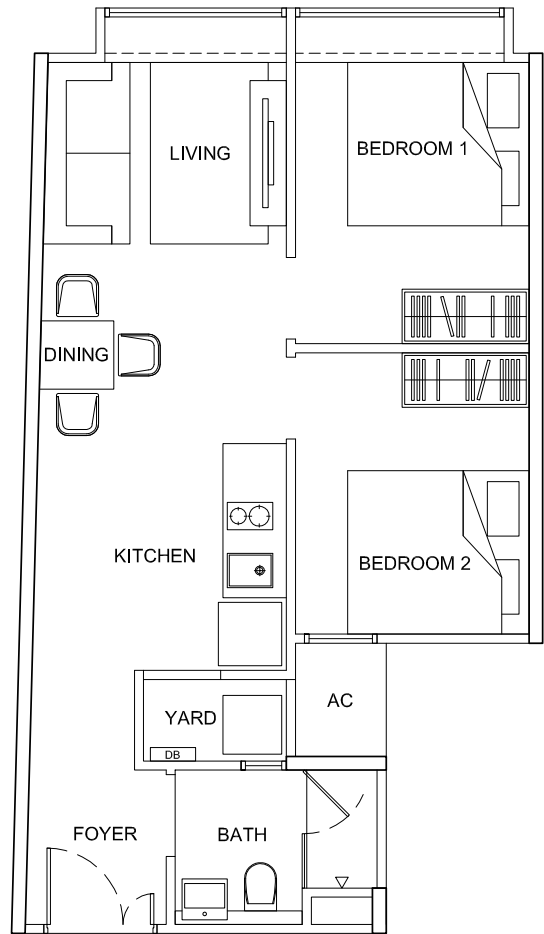
UNIT DISTRIBUTION CHART

	01	02	03	04	05	06	07	08	09	10	11	12	13	14
Attic	Type PH8 #04-01	Type PH4 #04-02	Type PH2 #04-03	Type PH1 #04-04	Type PH3 #04-05	Type PH5 #04-06	Type PH3 #04-07	Type PH3 #04-08	Type PH3 #04-09	Type PH6 #04-10	Type PH7 #04-11	Type PH4 #04-12	Type PH4 #04-13	Type PH4 #04-14
4th Storey	Type B5 #03-01	Type B3 #03-02	Type B2 #03-03	Type B1 #03-04	Type B3 #03-05	Type B4 #03-06	Type B3 #03-07	Type B3 #03-08	Type D1 #03-09	Type C1 #03-10	Type B3 #03-11	Type B3 #03-12	Type B3 #03-13	
3rd Storey	Type B5 #02-01	Type B3 #02-02	Type B2 #02-03	Type B1 #02-04	Type B3 #02-05	Type B4 #02-06	Type B3 #02-07	Type B3 #02-08	Type D1 #02-09	Type C1 #02-10	Type B3 #02-11	Type B3 #02-12	Type B3 #02-13	
2nd Storey	Type B5 #02-01	Type B3 #02-02	Type B2 #02-03	Type B1 #02-04	Type B3 #02-05	Type B4 #02-06	Type B3 #02-07	Type B3 #02-08	Type D1 #02-09	Type C1 #02-10	Type B3 #02-11	Type B3 #02-12	Type B3 #02-13	
1st Storey	Restaurants													
Basement 1	Retail Shops													
Basement 2	Carpark													

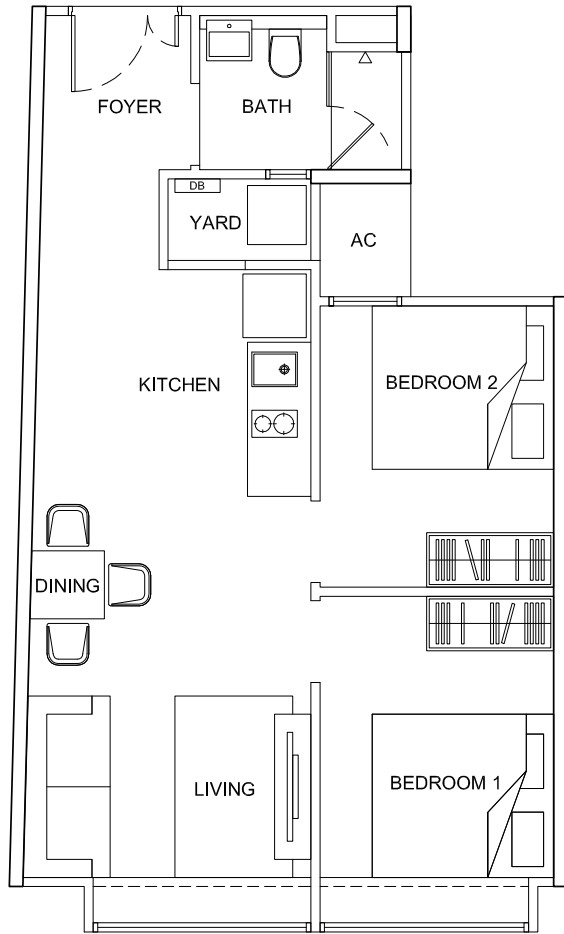
- Legend:
- 2-bedroom
- 3-Bedroom
- 4-Bedroom
- 3-Bedroom Penthouses



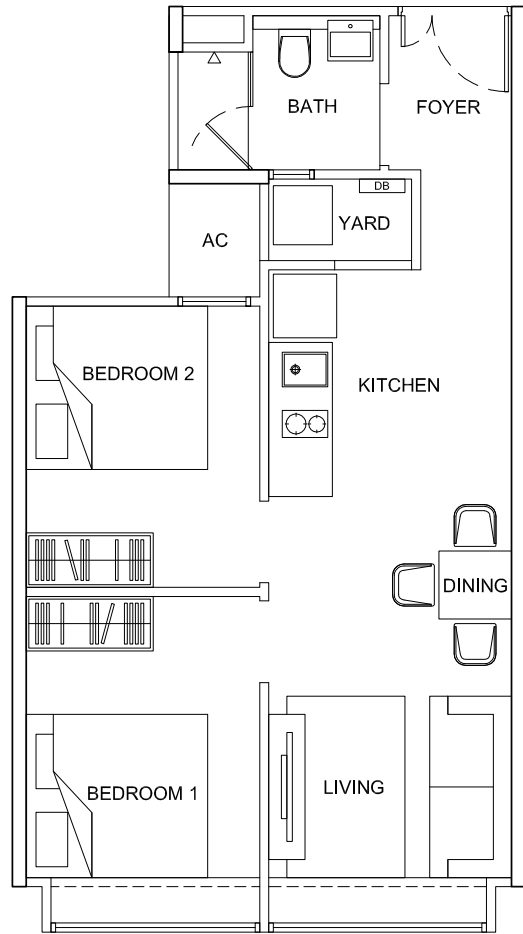
Type B1  
2-Bedroom  
50 sqm  
#02-04 #03-04



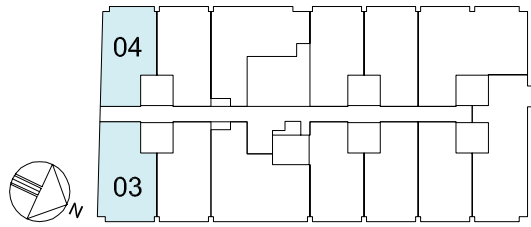
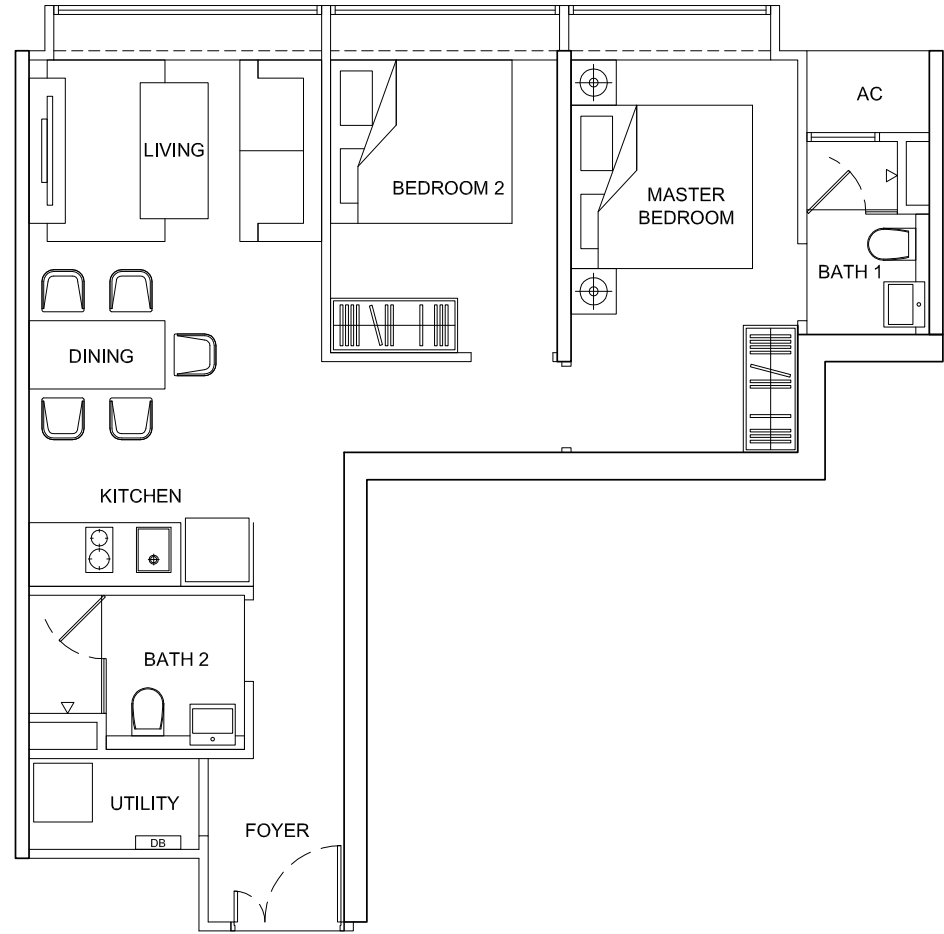
Type B2  
2-Bedroom  
53 sqm  
#02-03 #03-03



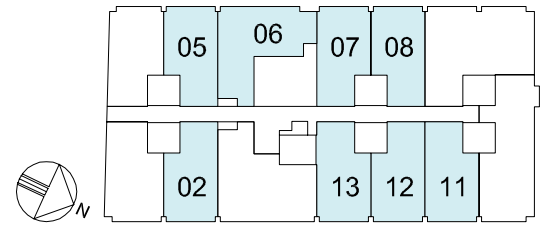
Type B3  
2-Bedroom  
50 sqm  
#02-02 #02-05 #02-07 #02-08 #02-11 #02-12 #02-13  
#03-02 #03-05 #03-07 #03-08 #03-11 #03-12 #03-13



Type B4  
2-Bedroom  
64 sqm  
#02-06 #03-06



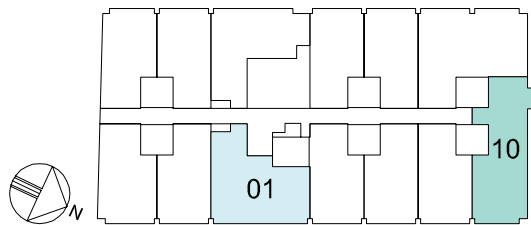
Plans are not to scale and subject to any amendment as may be approved by relevant authorities. All areas are approximate and are subject to final survey.



Plans are not to scale and subject to any amendment as may be approved by relevant authorities. All areas are approximate and are subject to final survey.

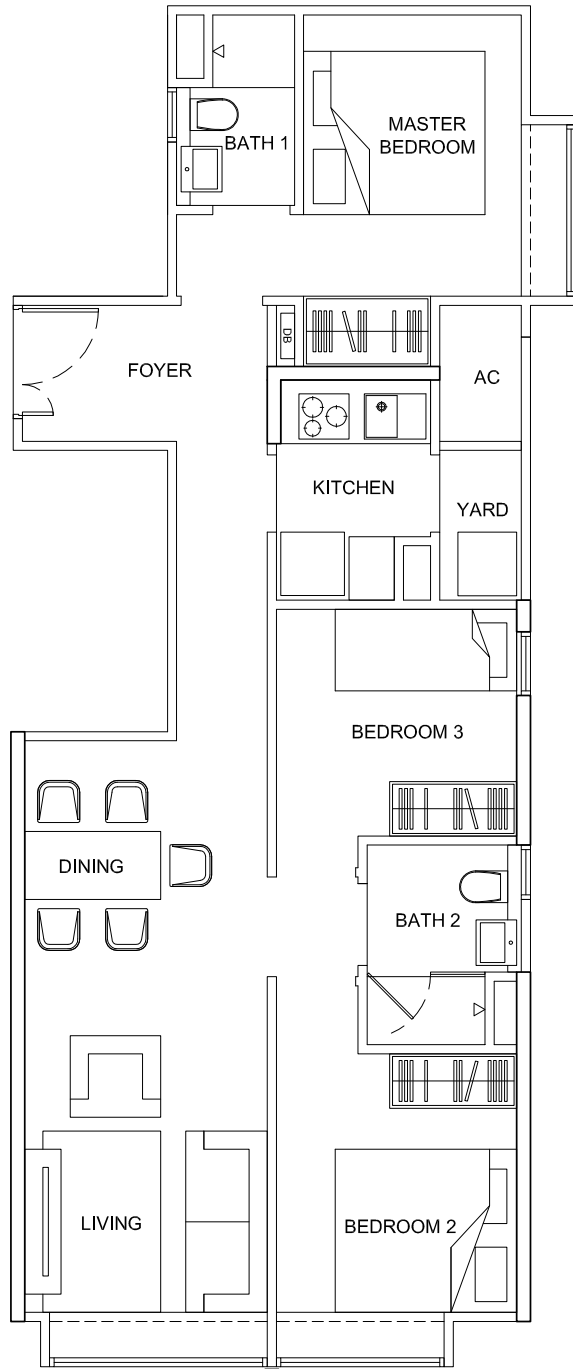


Type B5  
2-Bedroom  
74 sqm  
#02-01 #03-01

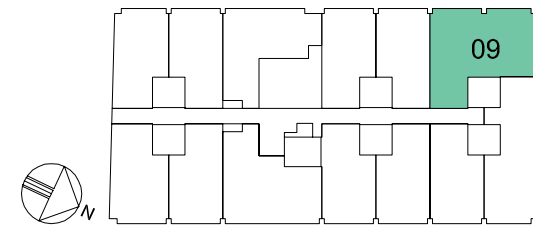
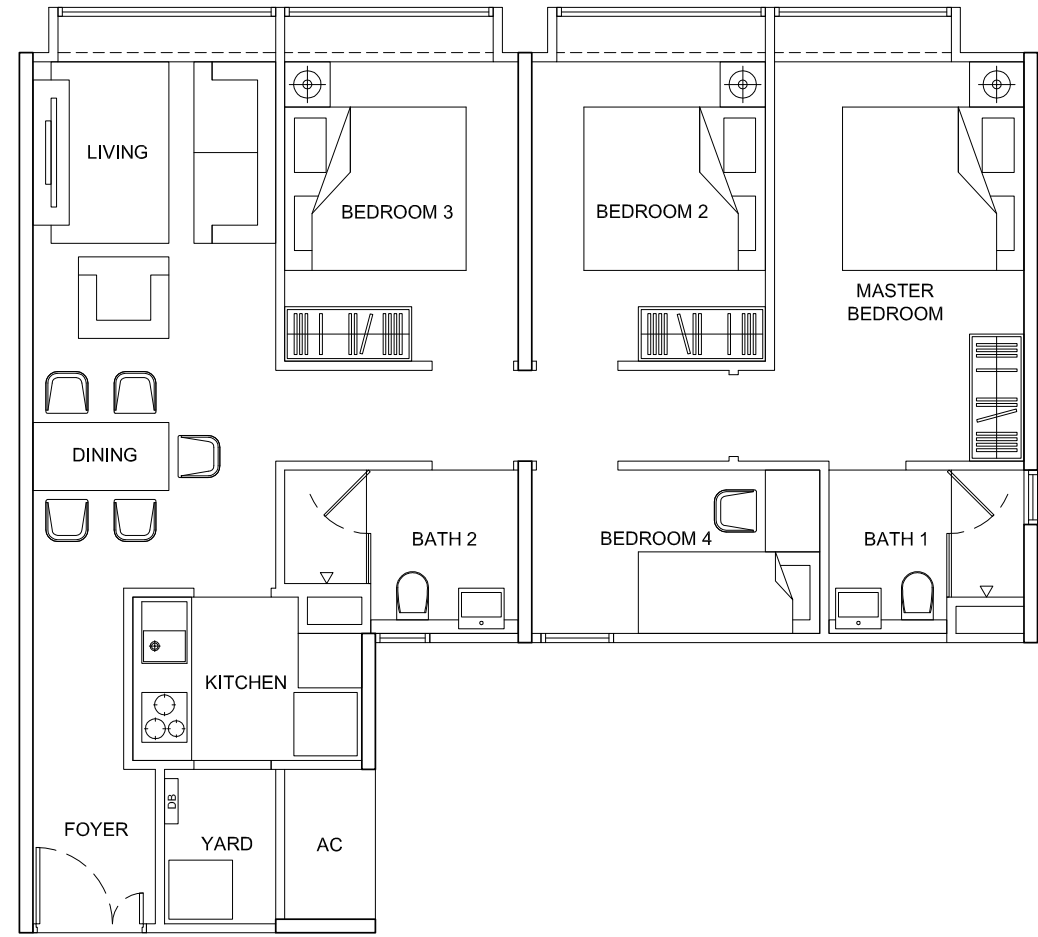


Plans are not to scale and subject to any amendment as may be approved by relevant authorities. All areas are approximate and are subject to final survey.

Type C1  
3-Bedroom  
72 sqm  
#02-10 #03-10



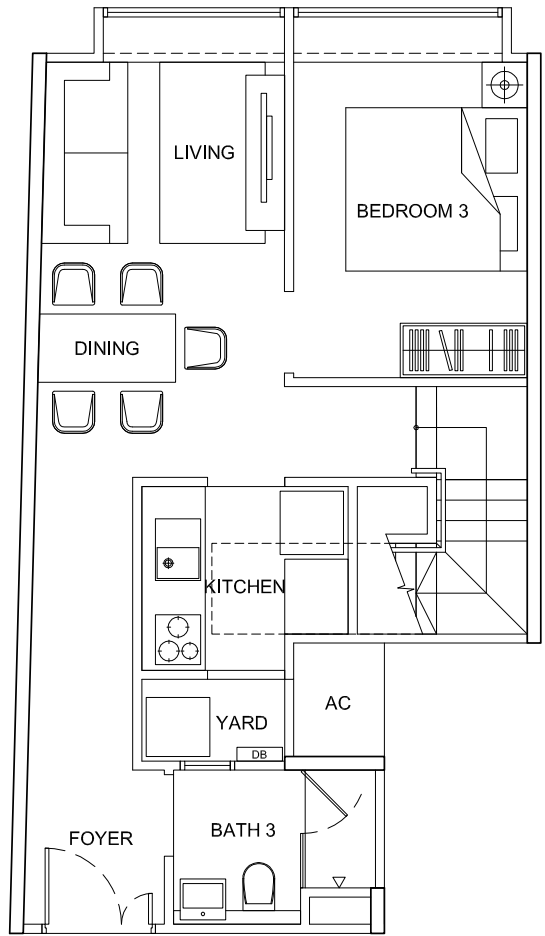
Type D1  
4-Bedroom  
87 sqm  
#02-09 #03-09



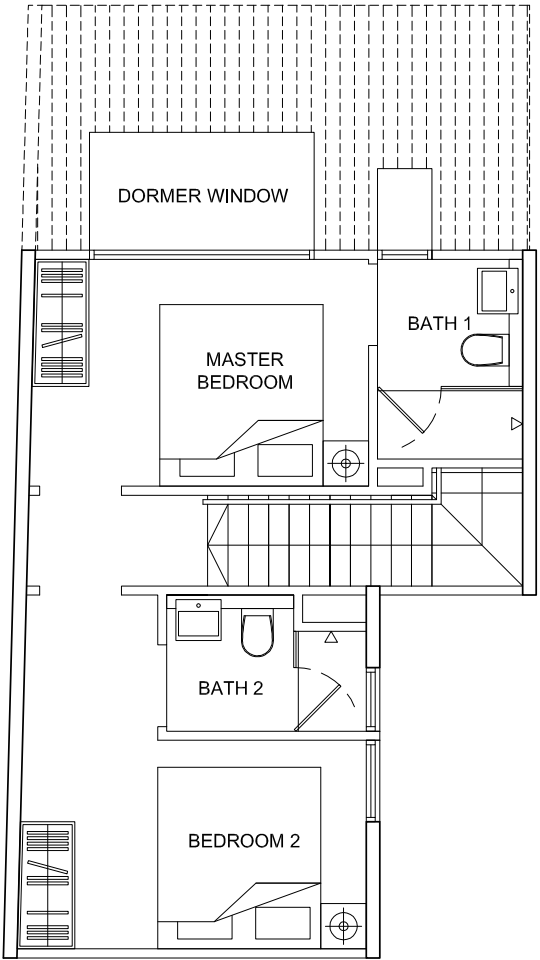
Plans are not to scale and subject to any amendment as may be approved by relevant authorities. All areas are approximate and are subject to final survey.



Type PH1  
3-Bedroom Penthouse  
89 sqm  
#04-04



Lower Level

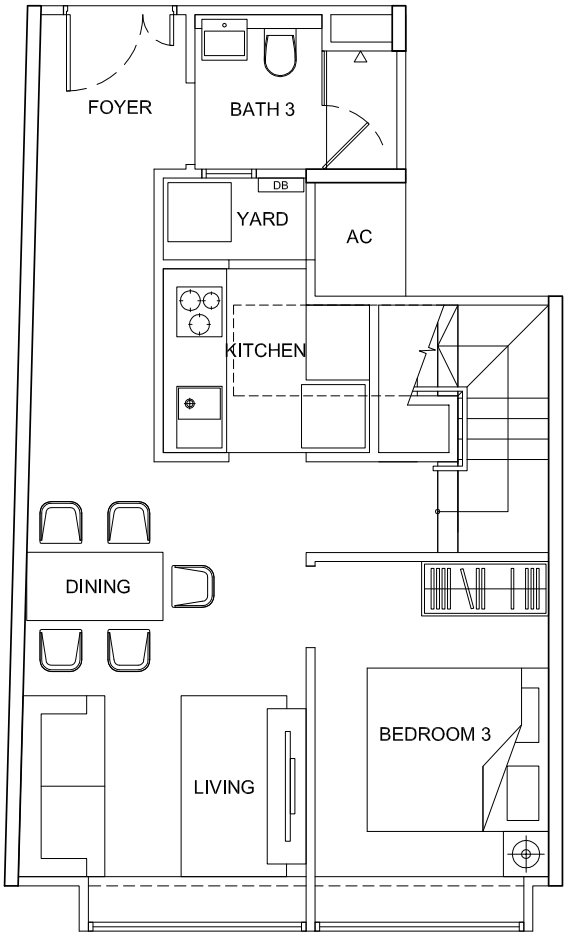


Upper Level

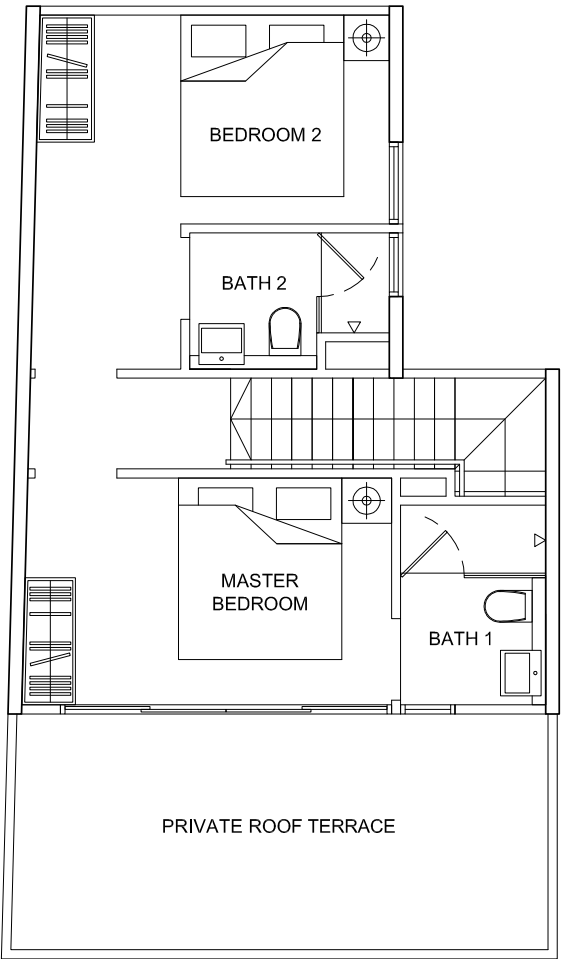


Plans are not to scale and subject to any amendment as may be approved by relevant authorities. All areas are approximate and are subject to final survey.

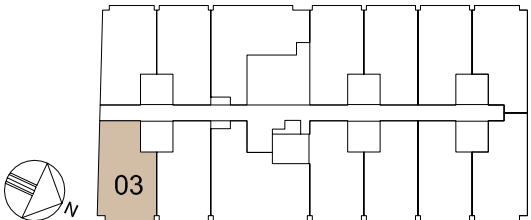
Type PH2  
3-Bedroom Penthouse  
107 sqm  
#04-03



Lower Level



Upper Level



Plans are not to scale and subject to any amendment as may be approved by relevant authorities. All areas are approximate and are subject to final survey.

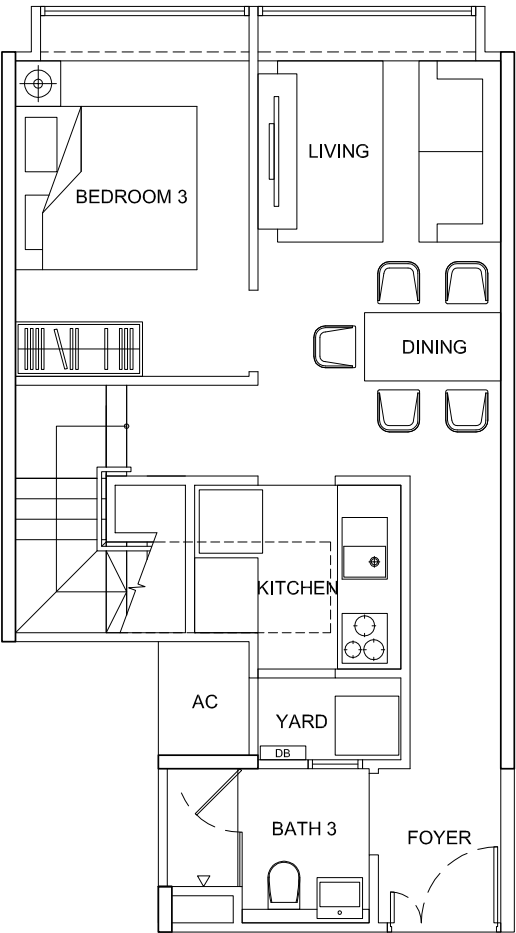


Type PH3

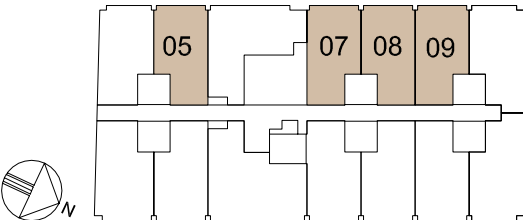
3-Bedroom Penthouse

88 sqm

#04-05 #04-07 #04-08 #04-09



Lower Level



Plans are not to scale and subject to any amendment as may be approved by relevant authorities. All areas are approximate and are subject to final survey.

Type PH4

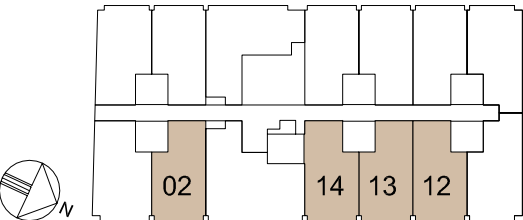
3-Bedroom Penthouse

100 sqm

#04-02 #04-12 #04-13 #04-14



Upper Level



Plans are not to scale and subject to any amendment as may be approved by relevant authorities. All areas are approximate and are subject to final survey.

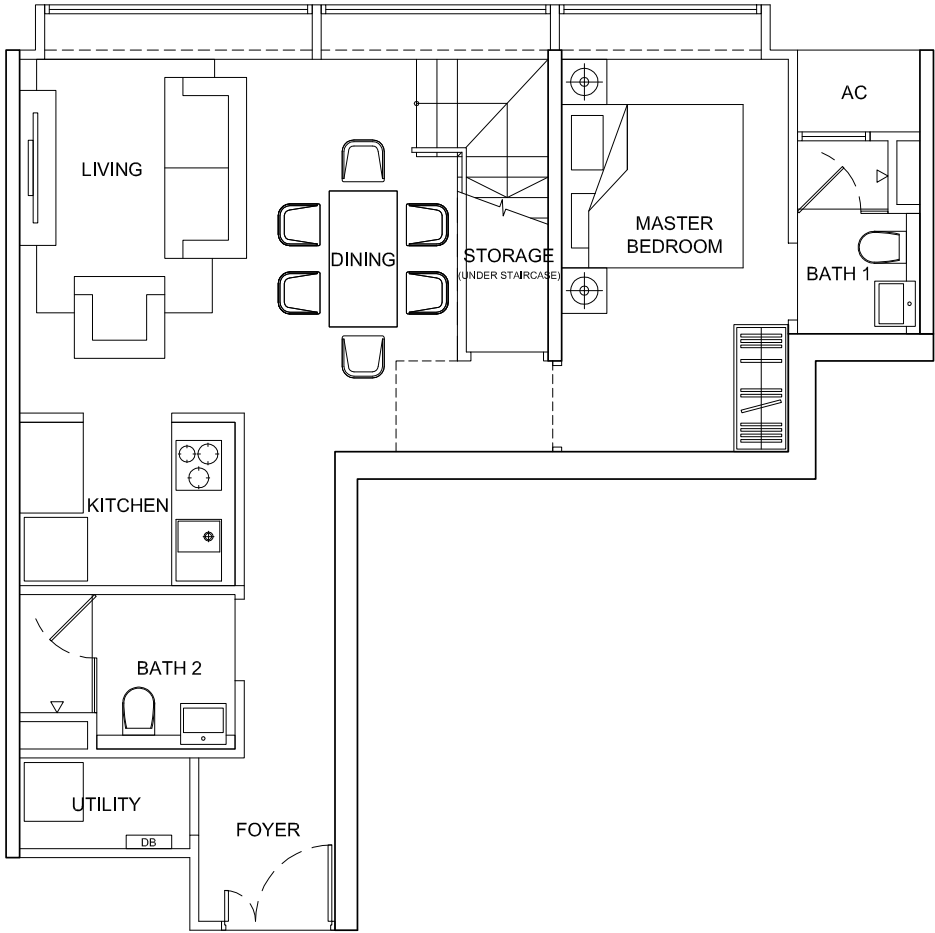


Type PH5

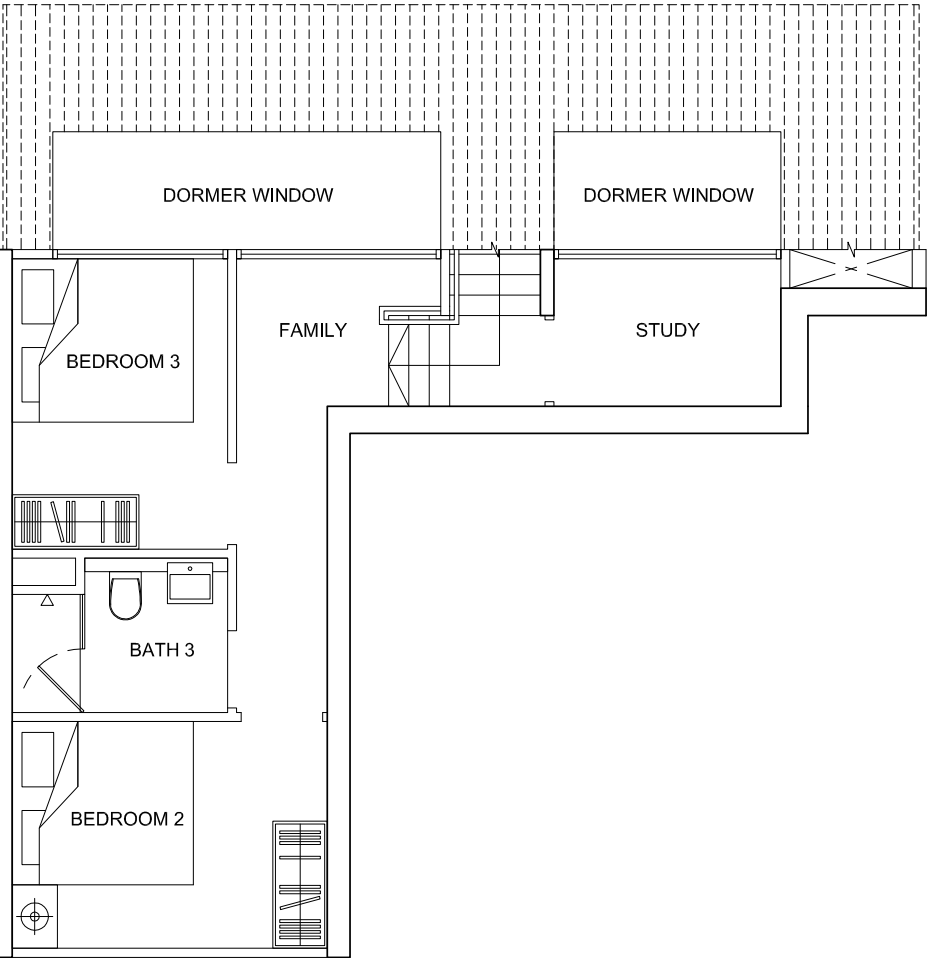
3-Bedroom Penthouse

110 sqm

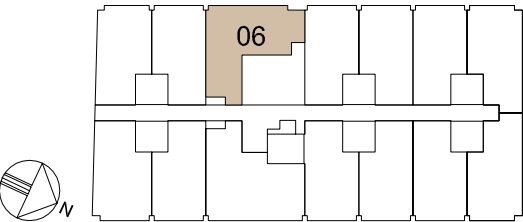
#04-06



Lower Level



Upper Level

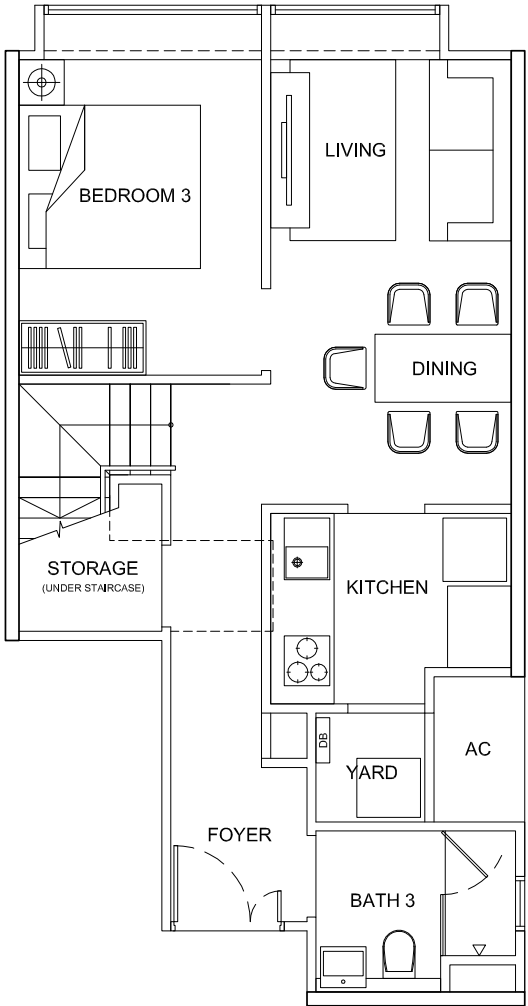


Plans are not to scale and subject to any amendment as may be approved by relevant authorities. All areas are approximate and are subject to final survey.

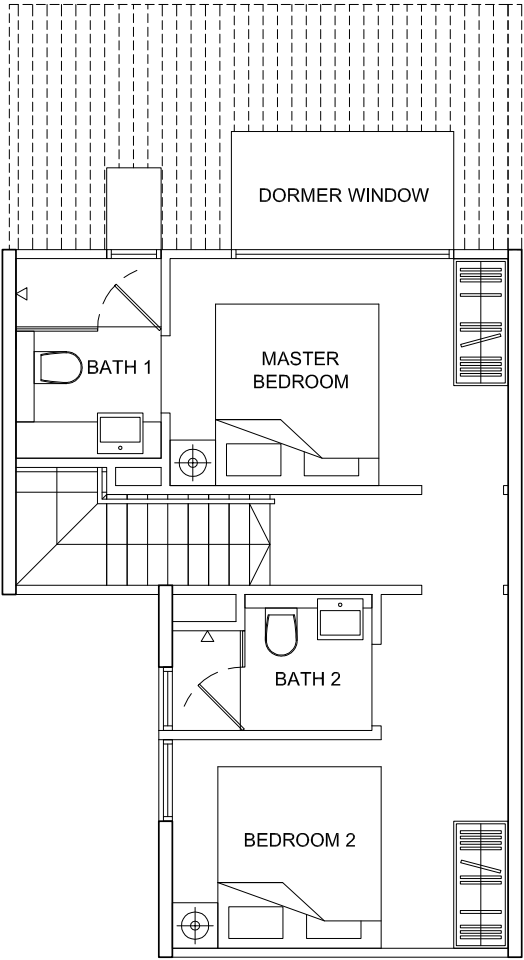
Plans are not to scale and subject to any amendment as may be approved by relevant authorities. All areas are approximate and are subject to final survey.



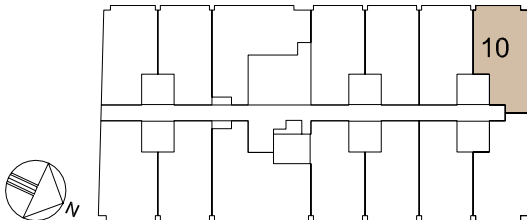
Type PH6  
3-Bedroom Penthouse  
91 sqm  
#04-10



Lower Level

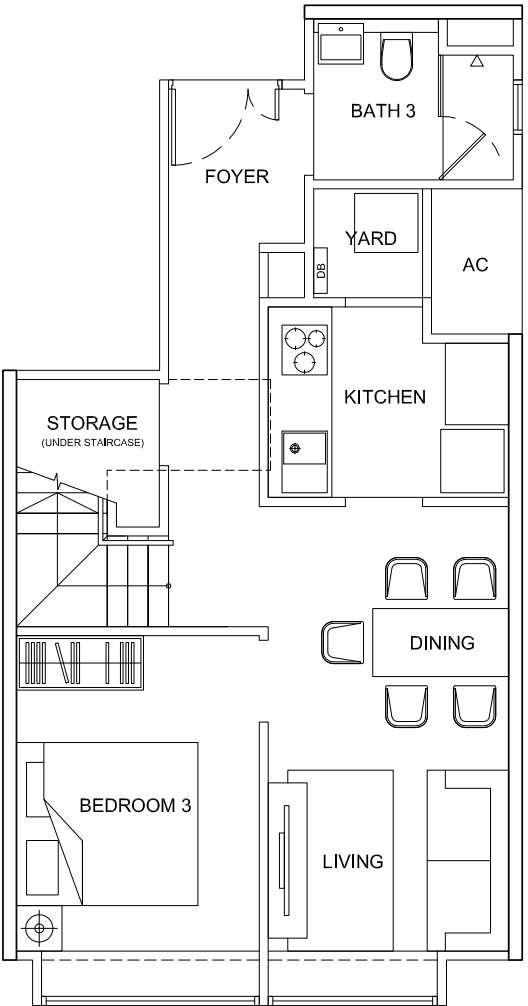


Upper Level

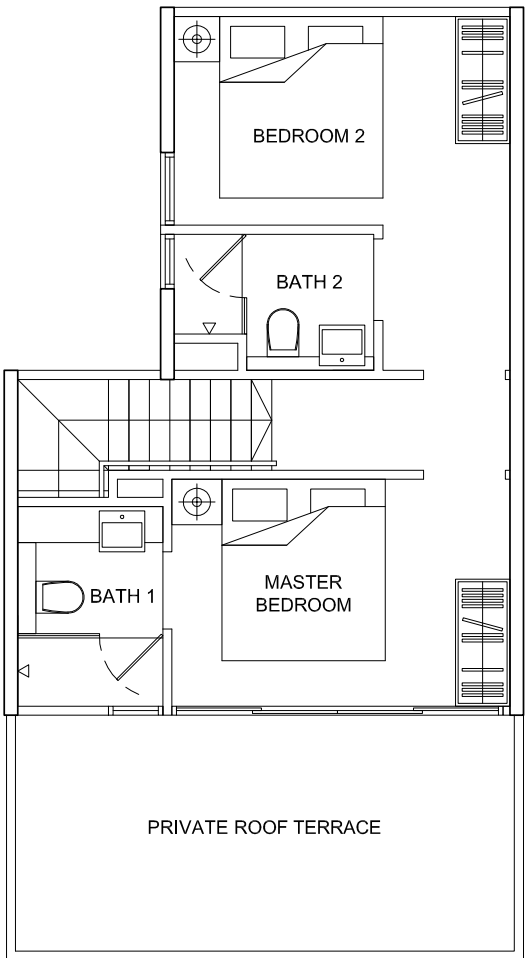


Plans are not to scale and subject to any amendment as may be approved by relevant authorities. All areas are approximate and are subject to final survey.

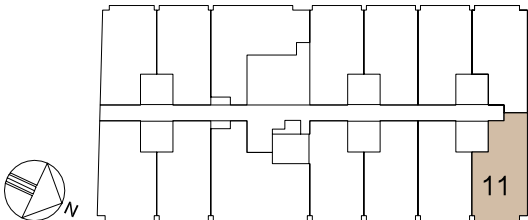
Type PH7  
3-Bedroom Penthouse  
103 sqm  
#04-11



Lower Level



Upper Level



Plans are not to scale and subject to any amendment as may be approved by relevant authorities. All areas are approximate and are subject to final survey.

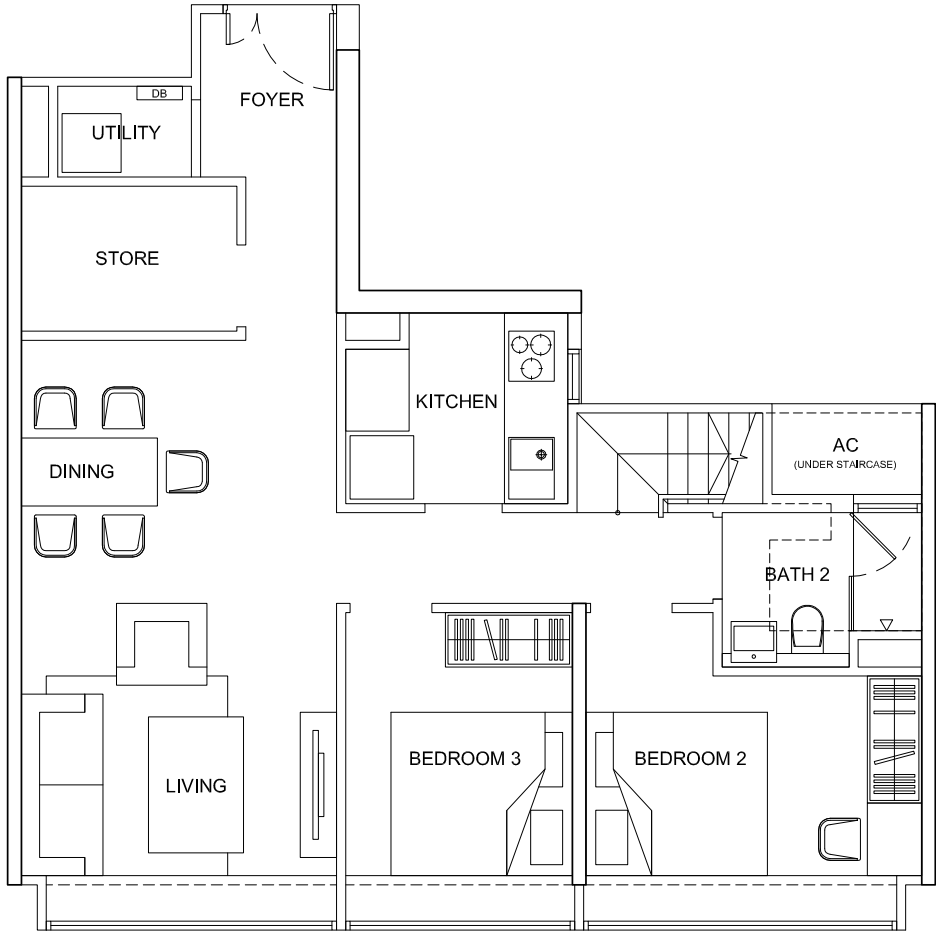


Type PH8

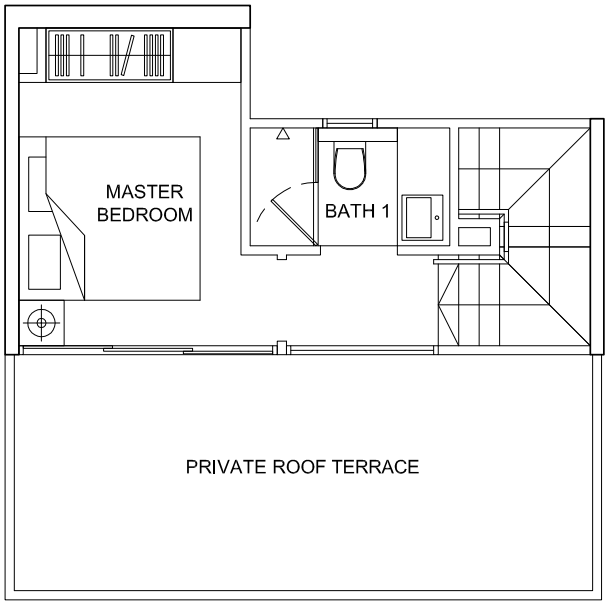
3-Bedroom Penthouse

110 sqm

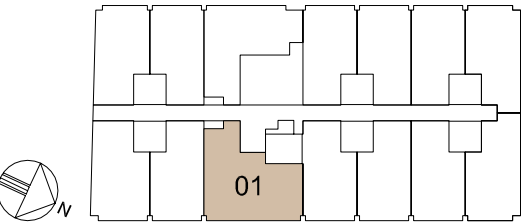
#04-01



Lower Level



Upper Level



Plans are not to scale and subject to any amendment as may be approved by relevant authorities. All areas are approximate and are subject to final survey.



COMMERCIAL  
PLAN

(Basement 1)

SHOPS

BASEMENT 1



Artist's Impression

COMMERCIAL  
PLAN

(Level 1)

RESTAURANT

LEVEL 1



Artist's Impression



# CORPORATE PROFILE

## TEE LAND LIMITED

TEE Land Limited is a mid-sized property developer listed on SGX-ST. Leveraging on its experience and expertise in property development in Singapore, TEE Land has also extended its geographical reach to Malaysia, New Zealand, Thailand and Australia. The Group's property development projects are pre-dominantly freehold in tenure and are targeted at middle-to-high income consumers who value exclusivity in good locations. The Group will continue to focus on residential developments while expanding into commercial and industrial development projects both in Singapore and the region. TEE Land is part of the TEE International Limited Group which is also listed on SGX-ST.



TRIO



HILBRE 28



SKY GREEN



AURA 83



THIRD AVENUE CYBERJAYA



REZI 3TWO



Developer Name: TEE Ventures Pte Ltd • Co. Reg. No.: 2013156232 • Tenure: Freehold • Legal Description: Lot 2236V, MK 15 at 183 Upper Thomson Road • Developer's Licence: C1186 • BP No.: A1525-00005-2014-BP01 approved on 28 December 2015 • Expected TOP Date: 31 October 2020 • Expected Date of Legal Completion: 31 October 2023

Whilst every reasonable care has been taken in preparing this brochure, the Developer and its agents shall not be held responsible or liable for any inaccuracies or omissions. All statements are believed to be correct but shall not be regarded as statements or representations of fact. All information and specifications are current at the time of print and are subject to change as may be required without prior notice. Nothing herein shall form part of any offer or contract. Visual representations including models, drawings, illustrations, photographs and art renderings portray artistic impressions only and are not to be taken as representations of fact. Floor areas (inclusive of A/C ledge and void area) and other measurements are approximate only and are subject to final survey. The Developer shall not be bound by any statements, representations or promises (whether written or oral) by its agents or otherwise, except as expressly set forth in the Sale and Purchase Agreement. The Sale and Purchase Agreement shall form the entire contract between the Developer and the Purchaser and shall supersede all statements, representations or promises (whether written or oral) made prior to the signing of the Sale and Purchase Agreement and shall in no way be modified by any statements, representations or promises (whether written or oral) made by the Developer and its agents unless approved by the Controller of Housing (if required) and expressly agreed to in writing between the parties.